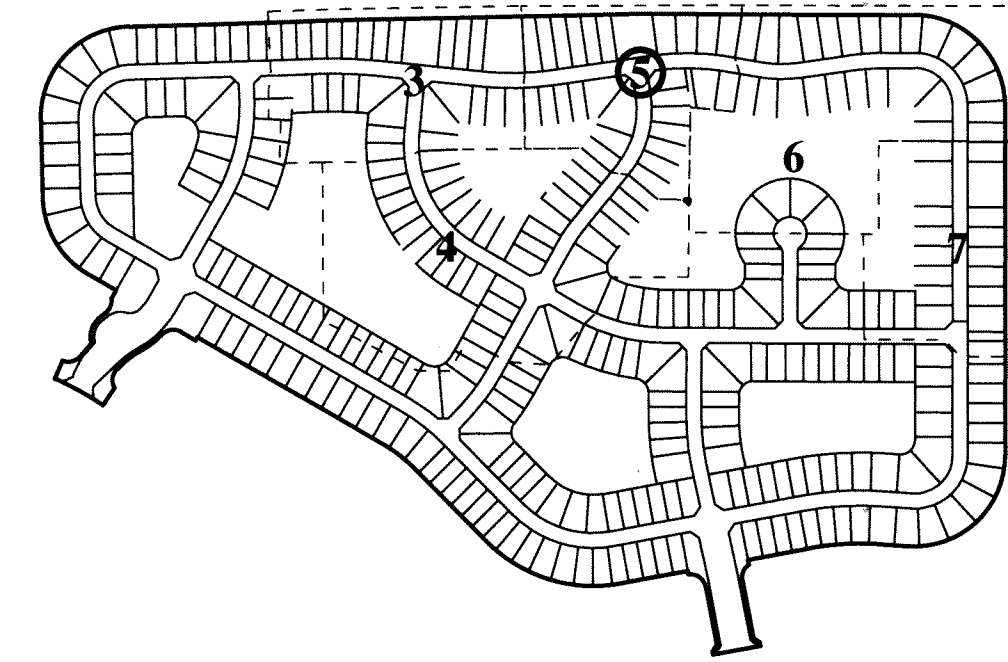


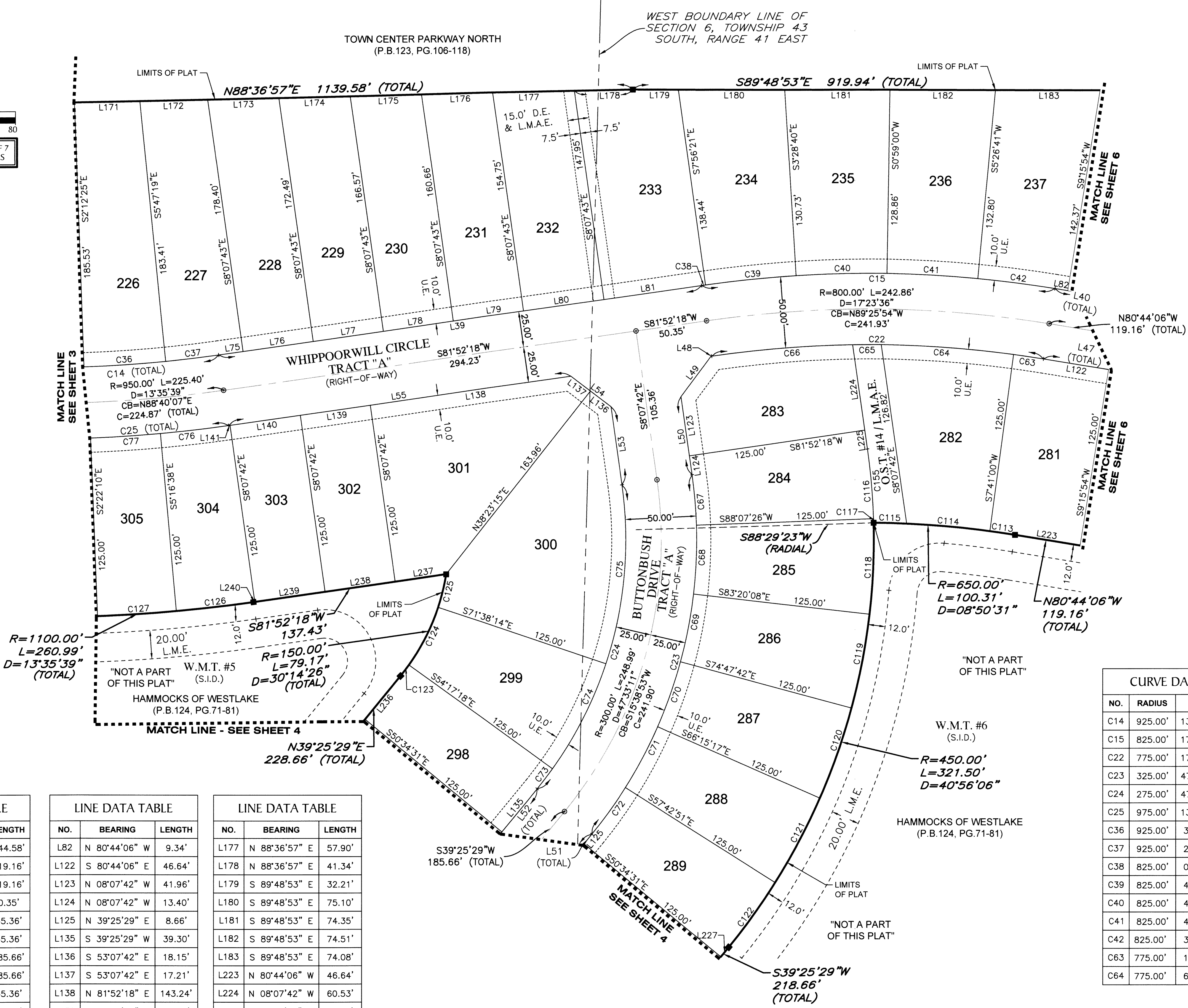
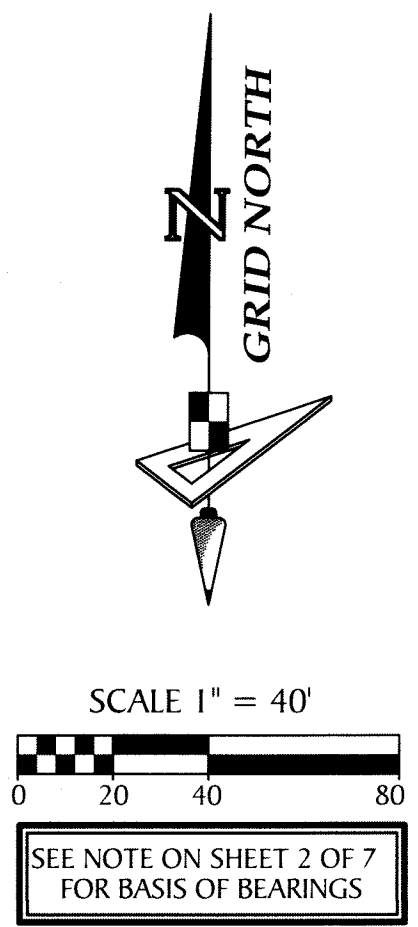
# HAMMOCKS OF WESTLAKE - PHASE II

BEING A REPLAT OF TRACTS "Q-2", O.S.T. #8 AND O.S.T. #9 OF HAMMOCKS OF WESTLAKE PER PLAT BOOK 124, PAGES 71-81, BEING A PORTION OF SECTION 6, TOWNSHIP 43 SOUTH, RANGE 41 EAST, AND A PORTION OF SECTION 1, TOWNSHIP 43 SOUTH, RANGE 40 EAST, CITY OF WESTLAKE, PALM BEACH COUNTY, FLORIDA

SHEET MAP  
(NOT TO SCALE)



157



- LEGEND:**
- --- Indicates (P.R.M.) Permanent Reference Monument - 4"x4" Concrete Monument LB7768, unless otherwise noted.
  - --- Indicates (P.R.M.) Offset Permanent Reference Monument - 4"x4" Concrete Monument LB7768, unless otherwise noted.
  - --- Indicates (P.C.P.) Permanent Control Point LB7768
  - P.B.C. --- Palm Beach County
  - P.B. --- Plat Book
  - FCM --- Found Concrete Monument
  - O.R. --- Official Records Book
  - (TYP) --- Typical
  - (RB) --- Radial Bearing
  - (NR) --- Non-Radial line
  - (PR) --- Private Road
  - (U.E.) --- Utility Easement
  - (D.E.) --- Drainage Easement
  - C --- Curve
  - L --- Line
  - B.T. --- Buffer Tract
  - O.S.T. --- Open Space Tract
  - W.M.T. --- Water Management Tract
  - L.M.E. --- Lake Maintenance Easement
  - L.M.A.E. --- Lake Maintenance Access Easement
  - L.A.E. --- Limited Access Easement
  - PG. --- Page
  - R.T. --- Recreation Tract
  - S.I.D. --- Seminole Improvement District
  - NAD --- North American Datum
  - LB --- Licensed Business
  - P.S.M. --- Professional Surveyor and Mapper
  - 1/4 --- One Quarter
  - R --- Radius
  - L --- Arc Length
  - D --- Delta-Central Angle
  - C --- Chord Length
  - CB --- Chord Bearing

NO.	BEARING	LENGTH
L39	S 81°52'18" W	344.58'
L40	N 80°44'06" W	119.16'
L47	S 80°44'06" E	119.16'
L48	N 81°52'18" E	0.35'
L49	N 36°52'18" E	35.36'
L50	N 08°07'42" W	55.36'
L51	N 39°25'29" E	185.66'
L52	S 39°25'29" W	185.66'
L53	S 08°07'42" E	55.36'
L54	S 53°07'42" E	35.36'
L55	N 81°52'18" E	244.23'
L75	S 81°52'18" W	17.34'
L76	S 81°52'18" W	50.00'
L77	S 81°52'18" W	50.00'
L78	S 81°52'18" W	50.00'
L79	S 81°52'18" W	50.00'
L80	S 81°52'18" W	57.50'
L81	S 81°52'18" W	69.74'

NO.	BEARING	LENGTH
L122	S 80°44'06" E	46.64'
L123	N 08°07'42" W	41.96'
L124	N 08°07'42" W	13.40'
L125	N 39°25'29" E	8.66'
L135	S 39°25'29" W	39.30'
L136	S 53°07'42" E	18.15'
L137	S 53°07'42" E	17.21'
L138	N 81°52'18" E	143.24'
L139	N 81°52'18" E	50.00'
L140	N 81°52'18" E	50.00'
L141	N 81°52'18" E	0.99'
L171	N 88°36'57" E	46.33'
L172	N 88°36'57" E	47.94'
L173	N 88°36'57" E	50.35'
L174	N 88°36'57" E	50.35'
L175	N 88°36'57" E	50.35'
L176	N 88°36'57" E	50.35'

NO.	BEARING	LENGTH
L177	N 88°36'57" E	57.90'
L178	N 88°36'57" E	41.34'
L179	S 89°48'53" E	32.21'
L180	S 89°48'53" E	75.10'
L181	S 89°48'53" E	74.35'
L182	S 89°48'53" E	74.51'
L183	S 89°48'53" E	74.08'
L223	N 80°44'06" W	46.64'
L224	N 08°07'42" W	60.53'
L225	N 08°07'42" W	13.40'
L227	S 39°25'29" W	8.66'
L236	N 39°25'29" E	39.31'
L237	S 81°52'18" W	36.44'
L238	S 81°52'18" W	50.00'
L239	S 81°52'18" W	50.00'
L240	S 81°52'18" W	0.99'

NO.	RADIUS	DELTA	ARC
C14	925.00'	1°33'39"	219.47'
C15	825.00'	1°23'36"	250.45'
C22	775.00'	1°23'36"	235.27'
C23	325.00'	4°7'33"11"	269.74'
C24	275.00'	4°7'33"11"	228.24'
C25	975.00'	1°33'39"	231.33'
C36	925.00'	3°34'54"	57.83'
C37	925.00'	2°20'23"	37.77'
C38	825.00'	0°11'21"	2.72'
C39	825.00'	4°27'41"	64.24'
C40	825.00'	4°27'41"	64.24'
C41	825.00'	4°27'41"	64.24'
C42	825.00'	3°49'12"	55.01'
C63	775.00'	1°34'54"	21.39'
C64	775.00'	6°55'49"	93.74'

NO.	RADIUS	DELTA	ARC
C65	775.00'	1°29'38"	20.20'
C66	775.00'	7°23'15"	99.93'
C67	325.00'	6°15'08"	35.47'
C68	325.00'	8°32'26"	48.44'
C69	325.00'	8°32'26"	48.44'
C70	325.00'	8°32'26"	48.44'
C71	325.00'	8°32'26"	48.44'
C72	325.00'	7°08'19"	40.51'
C73	275.00'	3°42'47"	17.82'
C74	275.00'	17°20'56"	83.27'
C75	275.00'	26°29'28"	127.15'
C76	975.00'	2°51'04"	48.52'
C77	975.00'	2°54'29"	49.48'
C113	650.00'	1°34'54"	17.94'
C114	650.00'	5°12'15"	59.04'

NO.	RADIUS	DELTA	ARC
C115	650.00'	2°03'22"	23.33'
C116	450.00'	6°15'08"	49.10'
C117	450.00'	0°21'58"	2.88'
C118	450.00'	8°10'28"	64.19'
C119	450.00'	8°32'26"	67.08'
C120	450.00'	8°32'26"	67.08'
C121	450.00'	8°32'26"	67.08'
C122	450.00'	7°08'20"	56.07'
C123	149.66'	3°43'15"	9.72'
C124	149.66'	17°23'23"	45.42'
C125	149.66'	9°12'00"	24.03'
C126	1100.00'	2°51'04"	54.73'
C127	1100.00'	2°54'29"	55.82'
C155	450.00'	6°37'06"	51.98'

**GeoPoint**  
Surveying, Inc.

4152 W. Blue Heron Blvd. Phone: (561) 444-2720  
Suite 105 www.geopointsurvey.com  
Riviera Beach, FL 33404 Licensed Business Number LB 7768

**SHEET 5 OF 7 SHEETS**