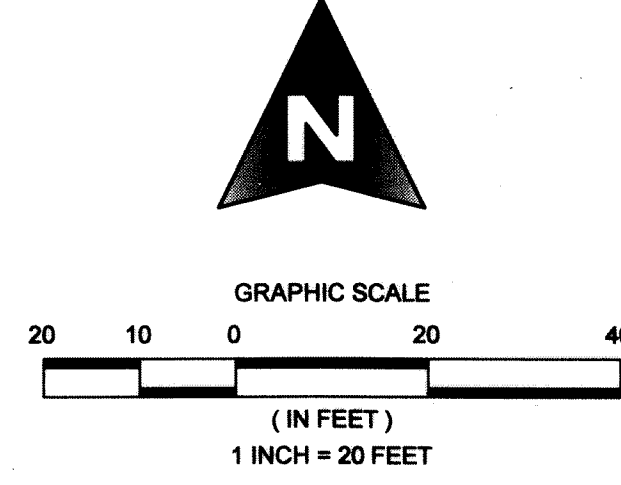


SONOMA ISLES PLAT 3 - REPLAT

LYING IN SECTION 32, TOWNSHIP 40 SOUTH, RANGE 42 EAST, TOWN OF JUPITER, PALM BEACH COUNTY, FLORIDA.
 BEING A REPLAT OF LOTS 147 AND 148 SONOMA ISLES PLAT 3, AS RECORDED IN PLAT BOOK 122,
 PAGES 92 THROUGH 97, PUBLIC RECORDS OF PALM BEACH COUNTY, FLORIDA.

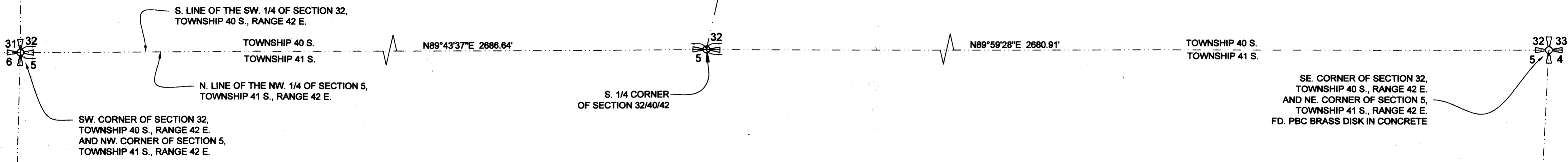
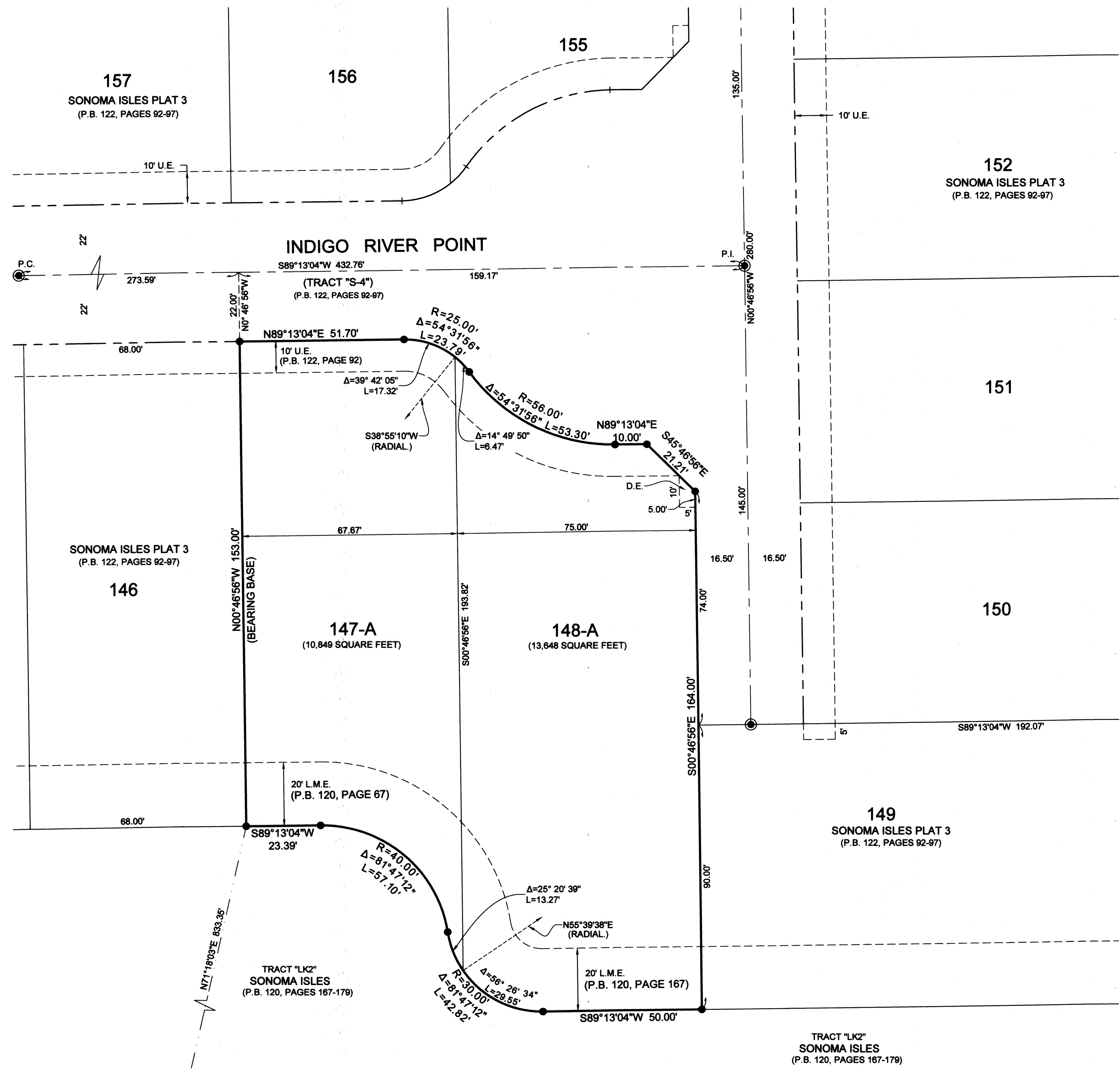
141

COUNTY OF PALM BEACH)
 STATE OF FLORIDA) SS
 THIS PLAT WAS FILED FOR RECORD AT _____ M. THIS _____ DAY OF _____ 2018, AND DULY
 RECORDED IN PLAT BOOK NO. _____
 ON PAGE _____ THRU _____
 SHARON R. BOCK,
 CLERK AND COMPTROLLER
 BY: _____ D.C.



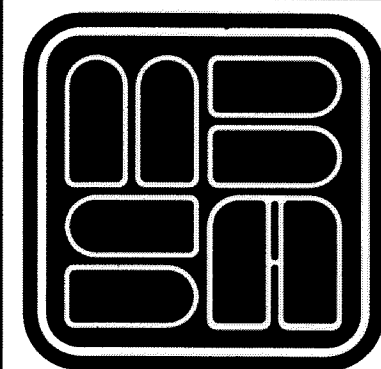
LEGEND

- P.C.P. = PERMANENT CONTROL POINT
- P.R.M. = PERMANENT REFERENCE MONUMENT
- C.M. = CONCRETE MONUMENT
- O.R.B. = OFFICIAL RECORD BOOK
- D.B. = DEED BOOK
- P.B. = PLAT BOOK
- PBC = PALM BEACH COUNTY
- F.D.O.T. = FLORIDA DEPARTMENT OF TRANSPORTATION
- FD. = FOUND
- RW = RIGHT OF WAY
- (T) = TOTAL
- ± = CENTERLINE
- U.E. = UTILITY EASEMENT
- D.E. = DRAINAGE EASEMENT
- L.A.E. = LIMITED ACCESS EASEMENT
- L.B.E. = LANDSCAPE BUFFER EASEMENT
- L.M.E. = LAKE MAINTENANCE EASEMENT
- RL = RADIAL
- T = TOTAL
- R = RADIUS
- L = ARC LENGTH
- Δ = CURVE CENTRAL ANGLE
- C.B. = CHORD BEARING
- C.L. = CHORD LENGTH
- = SET 1/2" IRON ROD WITH 2" ALUMINUM PRM CAP STAMPED SCHORAH AND ASSOCIATES PRM LB 2438
- ⊙ = NAIL AND BRASS DISK STAMPED P.C.P. LB 2438 TO BE SET PER THE PLAT OF SONOMA ISLES PLAT 3 AS RECORDED IN PLAT BOOK 122, PAGES 92-97
- ⊕ = SECTION CORNER
- ⊕ = 1/4 SECTION CORNER
- P.I. = POINT OF INTERSECTION
- P.C. = POINT OF CURVATURE
- S.F. = SQUARE FEET



SE. CORNER OF SECTION 32, TOWNSHIP 40 S., RANGE 42 E. AND NE. CORNER OF SECTION 5, TOWNSHIP 41 S., RANGE 42 E. FD. PBC BRASS DISK IN CONCRETE

SHEET 2 OF 2



MICHAEL B. SCHORAH & ASSOCIATES, INC.
 1850 FOREST HILL BLVD., SUITE 206
 WEST PALM BEACH, FLORIDA 33406
 EB# 2438 TEL. (561) 968-0080 FAX. (561) 642-9726 LB# 2438

**SONOMA ISLES PLAT 3
 REPLAT**