

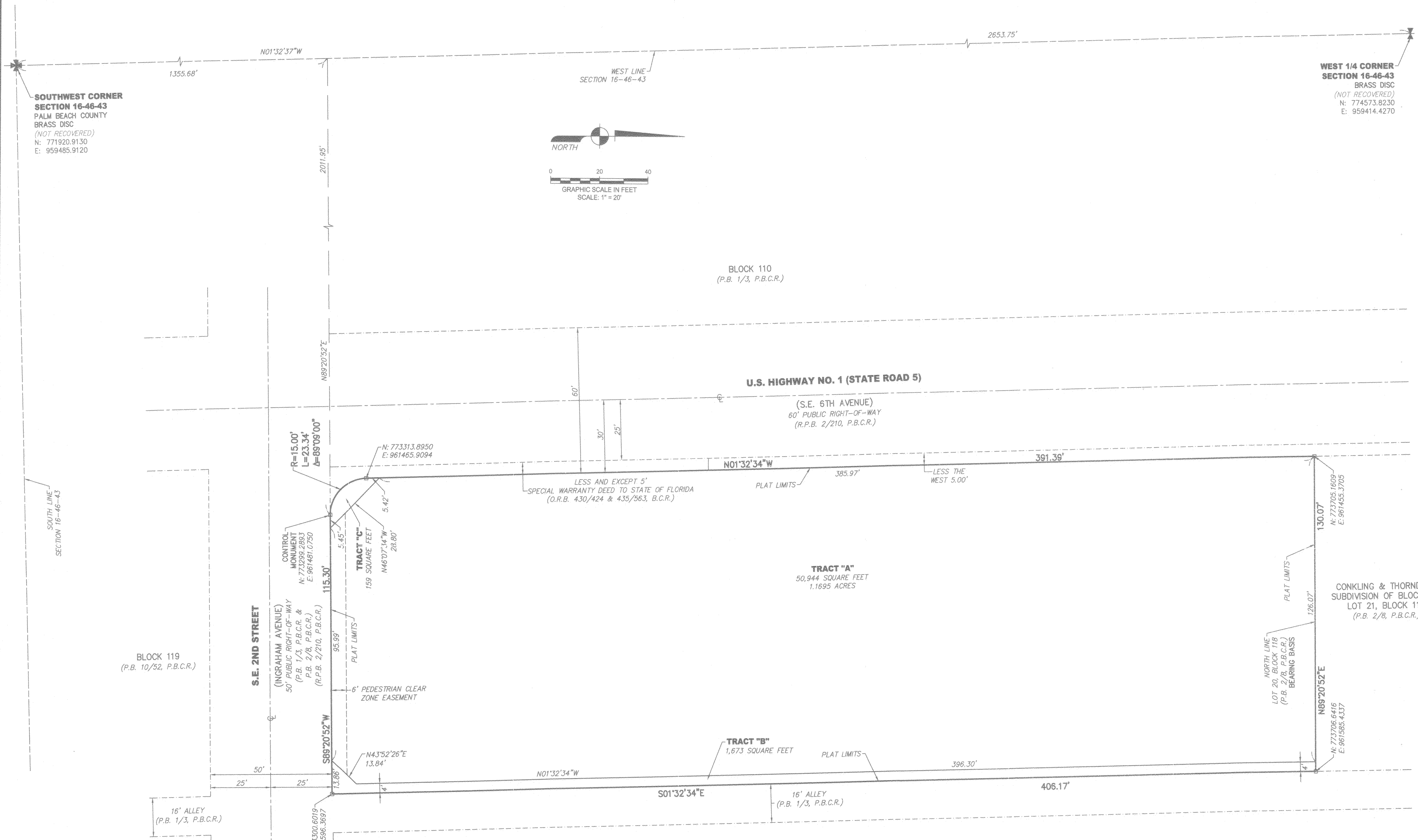
THIS INSTRUMENT WAS PREPARED BY:
 JOHN T. DOOGAN, P.L.S.
AVIROM & ASSOCIATES, INC.
 SURVEYING & MAPPING
 50 S.W. 2nd AVENUE, SUITE 102
 BOCA RATON, FLORIDA 33432
 (561) 392-2594

KOLTER HOTEL DELRAY

BEING A REPLAT OF LOTS 13 THROUGH 20, INCLUSIVE, BLOCK 118, CONKLING & THORNDYKE SUBDIVISION OF BLOCK 118,
 AS RECORDED IN PLAT BOOK 2, PAGE 8 OF THE PUBLIC RECORDS OF PALM BEACH COUNTY, FLORIDA
 SITUATE IN SECTION 16, TOWNSHIP 46 SOUTH, RANGE 43 EAST, IN THE CITY OF DELRAY BEACH, PALM BEACH COUNTY, FLORIDA.

139

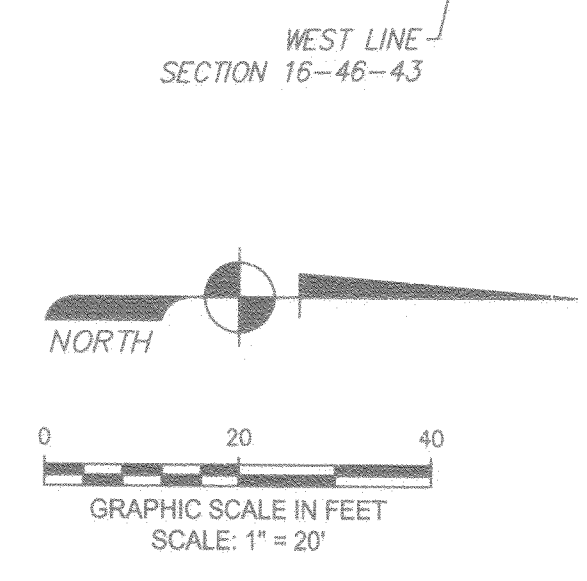
SHEET 2 OF 2 SHEETS



BLOCK 119
(P.B. 10/52, P.B.C.R.)

BLOCK 110
(P.B. 1/3, P.B.C.R.)

WEST 1/4 CORNER
SECTION 16-46-43
 BRASS DISC
 (NOT RECOVERED)
 N: 774573.8230
 E: 959414.4270



LESS AND EXCEPT 5'
 SPECIAL WARRANTY DEED TO STATE OF FLORIDA
 (O.R.B. 430/424 & 435/563, B.C.R.)

(S.E. 6TH AVENUE)
 60' PUBLIC RIGHT-OF-WAY
 (R.P.B. 2/210, P.B.C.R.)

TRACT "A"
 50,944 SQUARE FEET
 1.1695 ACRES

TRACT "B"
 1,673 SQUARE FEET

CONKLING & THORNDYKE
 SUBDIVISION OF BLOCK 118
 LOT 21, BLOCK 118
 (P.B. 2/8, P.B.C.R.)

16' ALLEY
(P.B. 1/3, P.B.C.R.)

REMAINDER OF BLOCK 118
(P.B. 2/8, P.B.C.R.)

NOTICE:
 THIS PLAT, AS RECORDED IN ITS GRAPHIC FORM, IS THE OFFICIAL DEPICTION OF THE SUBDIVIDED LANDS DESCRIBED HEREIN AND WILL IN NO CIRCUMSTANCES BE SUPPLANTED IN AUTHORITY BY ANY OTHER GRAPHIC OR DIGITAL FORM OF THE PLAT. THERE MAY BE ADDITIONAL RESTRICTIONS THAT ARE NOT RECORDED ON THIS PLAT, THAT MAY BE FOUND IN THE PUBLIC RECORDS OF PALM BEACH COUNTY, FLORIDA.

COORDINATE NOTE:
 STATE PLANE COORDINATES SHOWN HEREON ARE GRID DATUM, BASED ON THE 2011 ADJUSTMENT OF THE NORTH AMERICAN DATUM OF 1983 (NAD 83/2011, EPOCH 2010.00) COORDINATE SYSTEM: 1983 STATE PLANE, TRANSVERSE MERCATOR PROJECTION ZONE: FLORIDA EAST ZONE LINEAR UNIT = US SURVEY FEET ALL DISTANCES ARE GROUND SCALE FACTOR = 1.000046616 GRID DISTANCE = GROUND DISTANCE x SCALE FACTOR
 TIES WERE MADE TO THE SOUTHWEST AND WEST 1/4 CORNER OF SECTION 16, TOWNSHIP 46 SOUTH, RANGE 43 EAST AND ARE REFERENCED TO COORDINATES PUBLISHED BY PALM BEACH COUNTY ENGINEERING DEPARTMENT AS DEPICTED HEREON.

AREA TABULATION		
TRACT "A"	50,944 SQUARE FEET	1.1695 ACRES
TRACT "B"	1,673 SQUARE FEET	0.0384 ACRES
TRACT "C"	159 SQUARE FEET	0.0037 ACRES
TOTAL AREA OF PLAT	52,776 SQUARE FEET	1.2116 ACRES