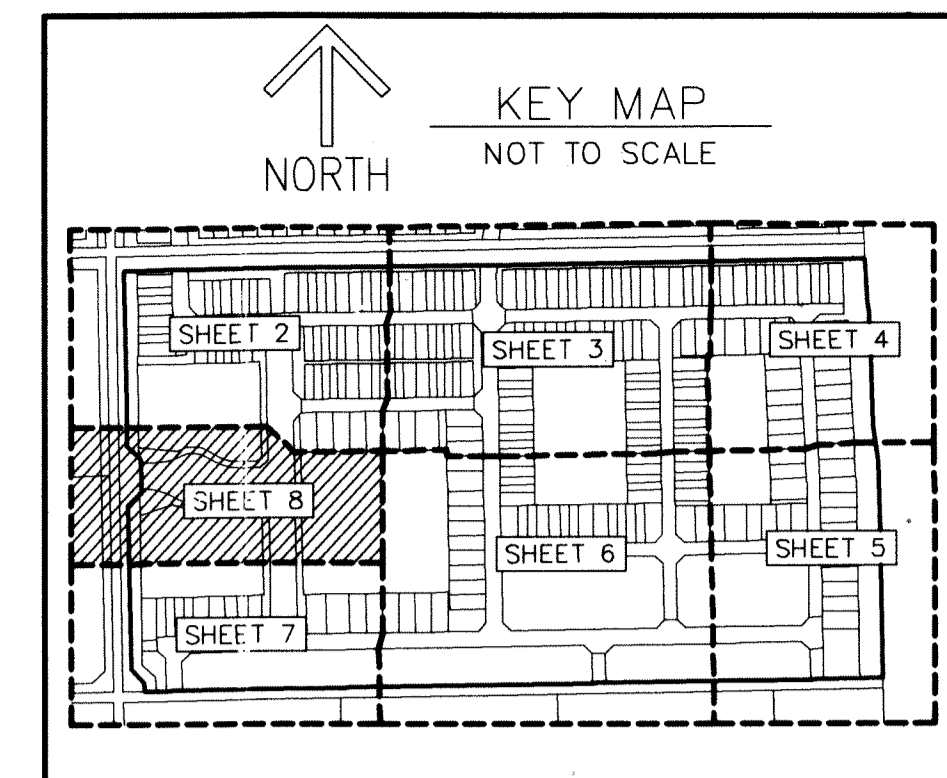


THIS INSTRUMENT PREPARED BY
 DAVID P. LINDLEY
 OF
CAULFIELD and WHEELER, INC.
 SURVEYORS - ENGINEERS - PLANNERS
 7900 GLADES ROAD, SUITE 100
 BOCA RATON, FLORIDA 33434 - (561)392-1991
 CERTIFICATE OF AUTHORIZATION NO. LB3591

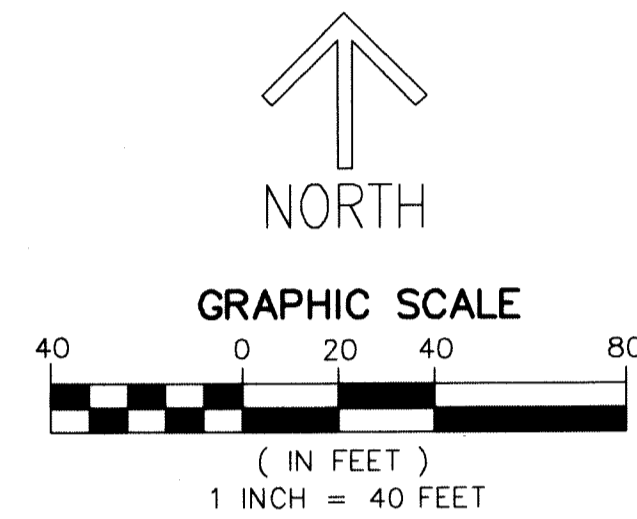
FIELDS AT GULFSTREAM POLO PUD - PLAT TWO

A PLANNED UNIT DEVELOPMENT
 BEING A REPLAT OF PARCEL C, TRACT L-13 AND TRACT L-14, FIELDS AT GULFSTREAM POLO PUD - PLAT ONE,
 AS RECORDED IN PLAT BOOK 123, PAGES 80 THROUGH 95, OF THE PUBLIC RECORDS OF PALM BEACH COUNTY, FLORIDA,
 LYING IN SECTION 29, TOWNSHIP 44 SOUTH, RANGE 42 EAST, PALM BEACH COUNTY, FLORIDA



137

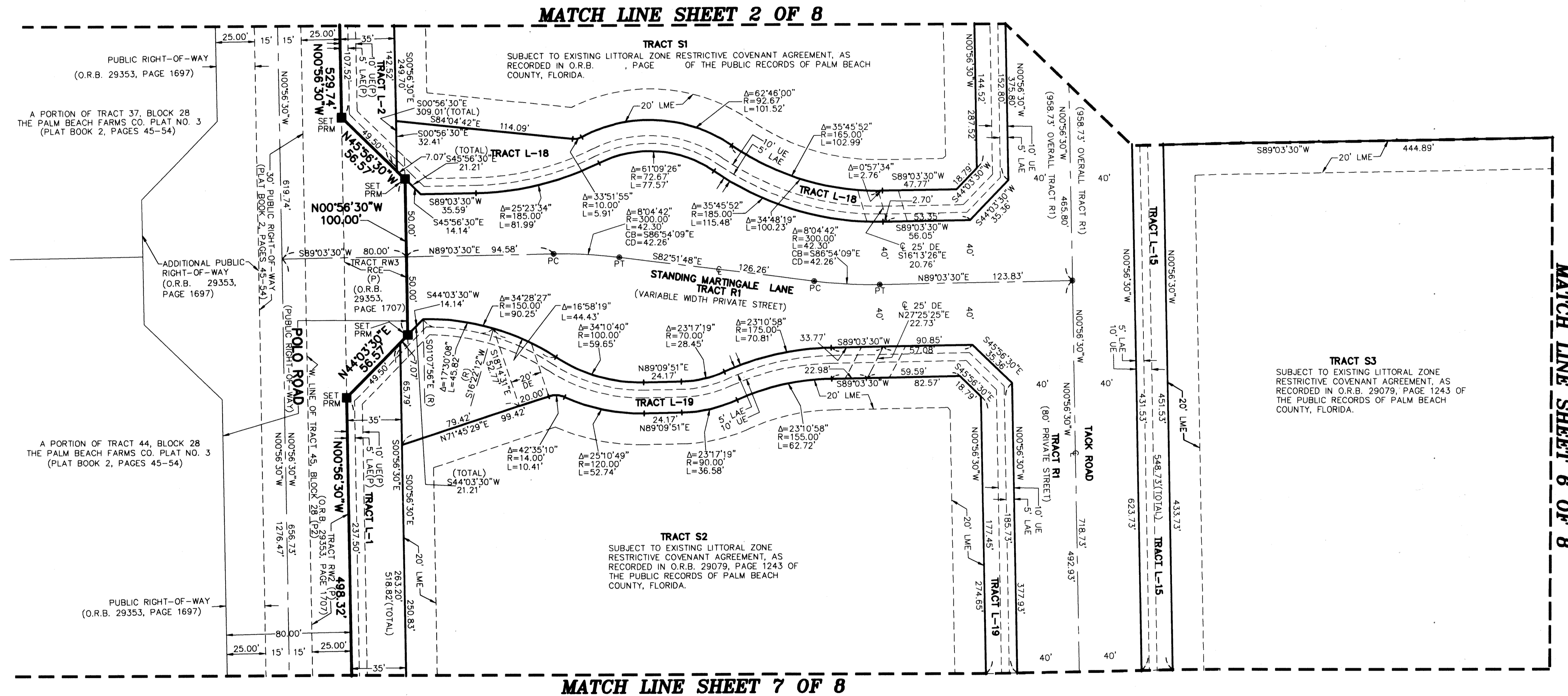
SHEET 8 OF 8



NOTES
COORDINATES, BEARINGS AND DISTANCES
 COORDINATES SHOWN ARE GRID
 DATUM = NAD 83 (90/98 ADJUSTMENT)
 ZONE = FLORIDA EAST
 LINEAR UNIT = US SURVEY FEET
 COORDINATE SYSTEM 1983 STATE PLANE
 TRANSVERSE MERCATOR PROJECTION
 ALL DISTANCES ARE GROUND, UNLESS OTHERWISE NOTED
 SCALE FACTOR = 1.0000236
 GROUND DISTANCE X SCALE FACTOR = GRID DISTANCE
 BEARINGS AS SHOWN HEREON ARE GRID DATUM,
 NAD 83 (90/98 ADJUSTMENT), FLORIDA EAST ZONE.

LEGEND/ABBREVIATIONS

- CL - CENTERLINE
- Δ - DELTA (CENTRAL ANGLE)
- CB - CHORD BEARING
- CD - CHORD DISTANCE
- DE - DRAINAGE EASEMENT
- E - EASTING (WHEN USED WITH COORDINATES)
- L - ARC LENGTH
- LAE - LIMITED ACCESS EASEMENT
- LB - LICENSED BUSINESS
- LMAE - LAKE MAINTENANCE ACCESS EASEMENT
- LME - LAKE MAINTENANCE EASEMENT
- LSE - LIFT STATION EASEMENT
- L.W.D.D. - LAKE WORTH DRAINAGE DISTRICT
- N - NORTHING (WHEN USED WITH COORDINATES)
- MOHE - MAINTENANCE AND OVERHANG EASEMENT
- O.R.B. - OFFICIAL RECORD BOOK
- PC - POINT OF CURVATURE
- PRAS - PRIVATE RESIDENTIAL ACCESS STREET
- PRC - POINT OF REVERSE CURVATURE
- PT - POINT OF TANGENCY
- PBCUE - PALM BEACH COUNTY UTILITY EASEMENT
- (P) - FIELDS AT GULFSTREAM POLO PUD - PLAT ONE (PLAT BOOK 123, PAGES 80-95)
- (P2) - PALM BEACH FARMS CO. PLAT NO. 3 (PLAT BOOK 2, PAGES 45-54)
- R - RADIUS
- (R) - RADIAL
- RCE - ROADWAY CONSTRUCTION EASEMENT
- UE - UTILITY EASEMENT
- SWE - SIDEWALK EASEMENT
- ▶ - INDICATES "ZERO" SIDE OF LOT LINE
- - DENOTES PERMANENT REFERENCE MONUMENT 4" x 4" x 24" CONCRETE MONUMENT WITH ALUMINUM DISK STAMPED "C&W PRM LB3591"
- - DENOTES PERMANENT CONTROL POINT NAIL AND METAL DISK STAMPED "PCP LB3591"



MATCH LINE SHEET 6 OF 8