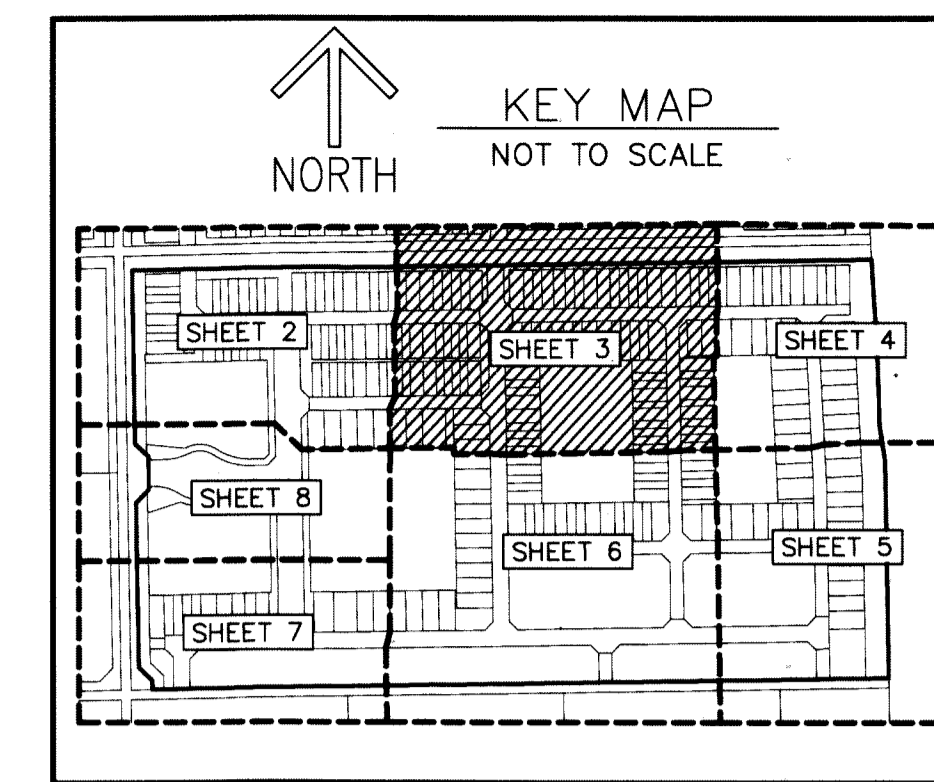


THIS INSTRUMENT PREPARED BY
DAVID P. LINDLEY
OF
CAULFIELD and WHEELER, INC.
SURVEYORS - ENGINEERS - PLANNERS
7900 GLADES ROAD, SUITE 100
BOCA RATON, FLORIDA 33434 - (561)392-1991
CERTIFICATE OF AUTHORIZATION NO. LB3591

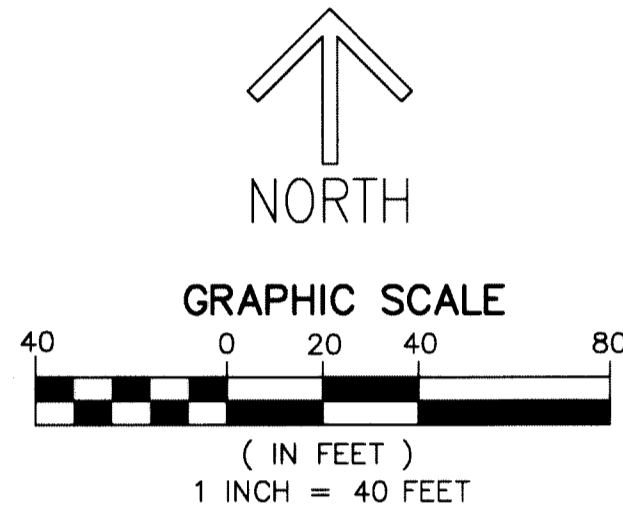
FIELDS AT GULFSTREAM POLO PUD - PLAT TWO

A PLANNED UNIT DEVELOPMENT
BEING A REPLAT OF PARCEL C, TRACT L-13 AND TRACT L-14, FIELDS AT GULFSTREAM POLO PUD - PLAT ONE,
AS RECORDED IN PLAT BOOK 123, PAGES 80 THROUGH 95, OF THE PUBLIC RECORDS OF PALM BEACH COUNTY, FLORIDA,
LYING IN SECTION 29, TOWNSHIP 44 SOUTH, RANGE 42 EAST, PALM BEACH COUNTY, FLORIDA



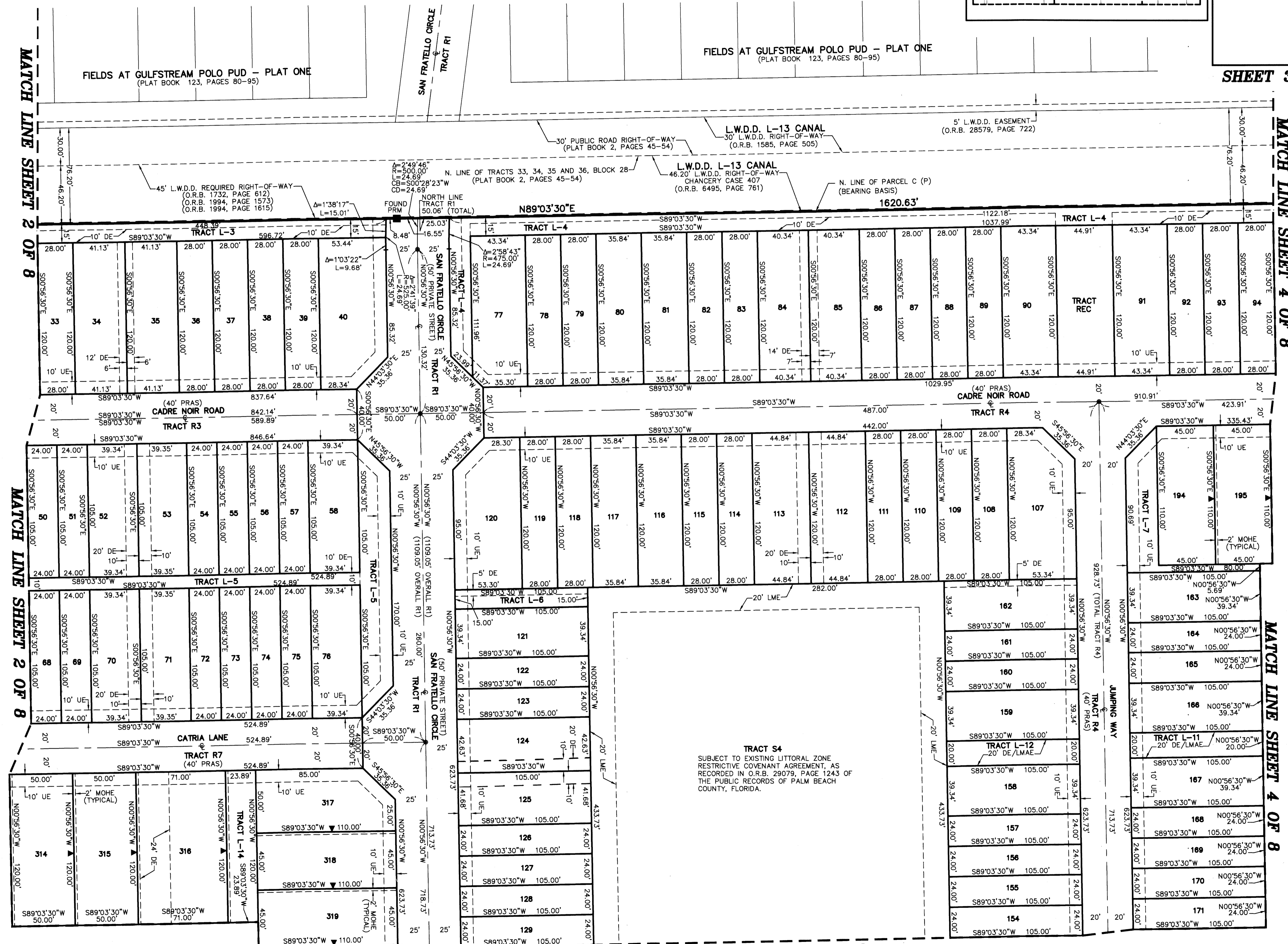
132

SHEET 3 OF 8



NOTES
COORDINATES, BEARINGS AND DISTANCES
COORDINATES SHOWN ARE GRID
DATUM = NAD 83 (90/98 ADJUSTMENT)
ZONE = FLORIDA EAST
LINEAR UNIT = US SURVEY FEET
COORDINATE SYSTEM 1983 STATE PLANE
TRANSVERSE MERCATOR PROJECTION
ALL DISTANCES ARE GROUND, UNLESS OTHERWISE NOTED
SCALE FACTOR = 1.000238
GROUND DISTANCE X SCALE FACTOR = GRID DISTANCE
BEARINGS AS SHOWN HEREON ARE GRID DATUM,
NAD 83 (90/98 ADJUSTMENT), FLORIDA EAST ZONE.

LEGEND/ABBREVIATIONS
CL - CENTERLINE
DA - DELTA (CENTRAL ANGLE)
LB - LICENSED BUSINESS
CB - CHORD BEARING
CD - CHORD DISTANCE
DE - DRAINAGE EASEMENT
E - EASTING (WHEN USED WITH COORDINATES)
L - ARC LENGTH
LAE - LIMITED ACCESS EASEMENT
LBS - LICENSED BUSINESS
LMAE - LAKE MAINTENANCE ACCESS EASEMENT
LME - LAKE MAINTENANCE EASEMENT
LSE - LIFT STATION EASEMENT
L.W.D.D. - LAKE WORTH DRAINAGE DISTRICT
N - NORTHING (WHEN USED WITH COORDINATES)
MOHE - MAINTENANCE AND OVERHANG EASEMENT
O.R.B. - OFFICIAL RECORD BOOK
PC - POINT OF CURVATURE
PRAS - PRIVATE RESIDENTIAL ACCESS STREET
PRC - POINT OF REVERSE CURVATURE
PT - POINT OF TANGENCY
PBCUE - PALM BEACH COUNTY UTILITY EASEMENT
(P) - FIELDS AT GULFSTREAM POLO PUD - PLAT ONE
(P2) - PALM BEACH FARMS CO. PLAT NO. 3
(PLAT BOOK 2, PAGES 45-54)
R - RADIUS
(R) - RADIAL
RCE - ROADWAY CONSTRUCTION EASEMENT
UE - UTILITY EASEMENT
SWE - SIDEWALK EASEMENT
▲ - INDICATES "ZERO" SIDE OF LOT LINE
DEMOTES PERMANENT REFERENCE MONUMENT
4" x 4" x 24" CONCRETE MONUMENT WITH
ALUMINUM DISK STAMPED "C&W PRM LB3591"
● PCP - DEMOTES PERMANENT CONTROL POINT
NAIL AND METAL DISK STAMPED "PCP LB3591"



MATCH LINE SHEET 6 OF 8

MATCH LINE SHEET 2 OF 8

MATCH LINE SHEET 4 OF 8

MATCH LINE SHEET 4 OF 8