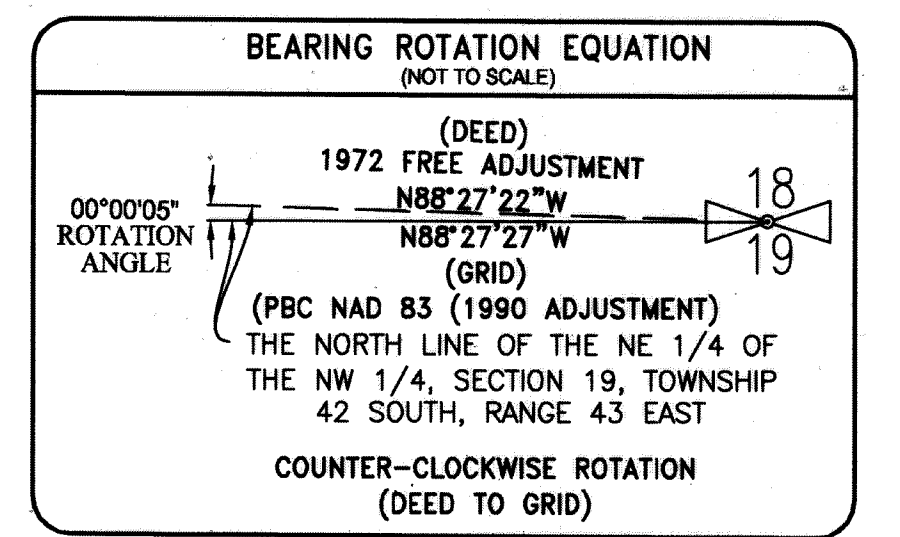
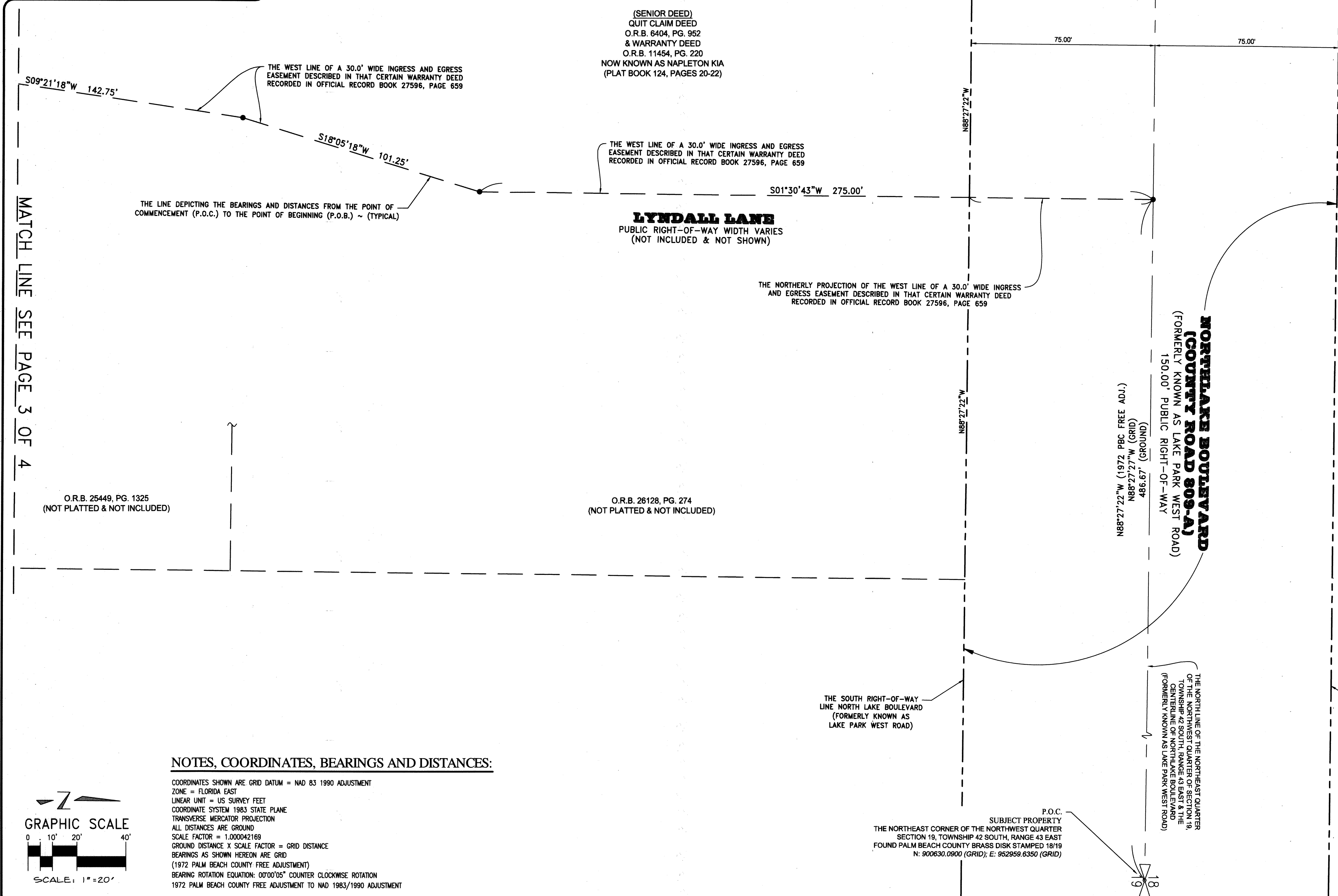


SUNSPIRE HEALTH, TYPE 3 CLF

LYING THE NORTHEAST QUARTER (NE 1/4) OF THE NORTHWEST QUARTER (NW 1/4) OF SECTION 19, TOWNSHIP 42 SOUTH, RANGE 43 EAST, PALM BEACH COUNTY, FLORIDA

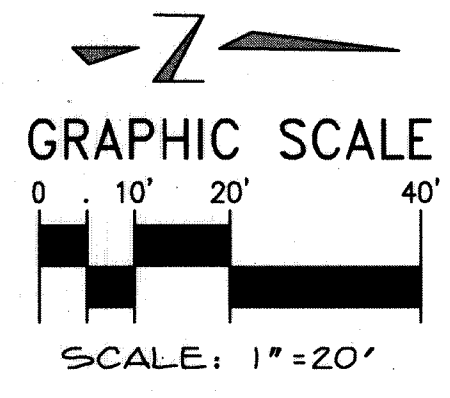
127

SHEET 2 OF 4



NOTES, COORDINATES, BEARINGS AND DISTANCES:

COORDINATES SHOWN ARE GRID DATUM = NAD 83 1990 ADJUSTMENT
 ZONE = FLORIDA EAST
 LINEAR UNIT = US SURVEY FEET
 COORDINATE SYSTEM 1983 STATE PLANE
 TRANSVERSE MERCATOR PROJECTION
 ALL DISTANCES ARE GROUND
 SCALE FACTOR = 1.000042169
 GROUND DISTANCE X SCALE FACTOR = GRID DISTANCE
 BEARINGS AS SHOWN HEREON ARE GRID
 (1972 PALM BEACH COUNTY FREE ADJUSTMENT)
 BEARING ROTATION EQUATION: 00°00'05\"/>



LEGEND OF SYMBOLS:

- = 4"x4" CONCRETE MONUMENT STAMPED "P.R.M. LB4897" OR AS NOTED.
- △ = MAG NAIL & DISK STAMPED "P.R.M. LB 4897" OR AS NOTED.
- = A POINT REPRESENTING THE CHANGE IN DIRECTION FOR THE LINE FROM THE P.O.C. TO THE P.O.B.

LEGEND OF ABBREVIATIONS:

PROPERTY CONTROL ABBREVIATIONS		ARITHMETIC / ANNOTATION ABBREVIATIONS		EASEMENT / MISCELLANEOUS ABBREVIATIONS	
P.C.P. = PERMANENT CONTROL POINT	T = TANGENT	D.E. = DRAINAGE EASEMENT	PG. = PAGE	L.A.E. = LIMITED ACCESS EASEMENT	ING-EGR = INGRESS EGRESS EASEMENT
PRM = PERMANENT REFERENCE MONUMENT	N.T. = NON-TANGENT	L.A.E. = LIMITED ACCESS EASEMENT	P.O.C. = POINT OF COMMENCEMENT	U.E. = UTILITY EASEMENT	L.W.D.D. = LAKE WORTH DRAINAGE DISTRICT
CONC. = CONCRETE	P.C. = POINT OF CURVATURE	U.E. = UTILITY EASEMENT	P.O.B. = POINT OF BEGINNING	S.L.E. = SANITARY SEWER LINE EASEMENT	PBC = PALM BEACH COUNTY
MON. = MONUMENT	P.T. = POINT OF TANGENCY	S.L.E. = SANITARY SEWER LINE EASEMENT	P.O.T. = POINT OF TERMINUS	W.L.E. = WATER LINE EASEMENT	P.B.C.U.E. = PALM BEACH COUNTY UTILITY EASEMENT
MND = MAG NAIL & DISK	R = RADIUS	W.L.E. = WATER LINE EASEMENT	D.B. = DEED BOOK	R/W = RIGHT-OF-WAY	
	RAD. = RADIAL		LB = LICENSED BUSINESS		
	Δ = DELTA		O.R.B. = OFFICIAL RECORD BOOK		
	L = ARC LENGTH		P.S.M. = PROFESSIONAL SURVEYOR & MAPPER		
	N.R. = NON-RADIAL				

KESHAVARZ & ASSOCIATES
 Civil Engineers • Land Surveyors
 711 North Dixie Highway, Suite 201
 West Palm Beach, Florida 33401
 Tel: (561) 688-8000 Fax: (561) 688-7476

THIS INSTRUMENT WAS PREPARED BY SCOTT F. BRYSON, IN AND FOR THE OFFICES OF KESHAVARZ & ASSOCIATES, INC. 711 NORTH DIXIE HIGHWAY, SUITE 201, WEST PALM BEACH, FLORIDA 33401. TELEPHONE (561) 689-8600.

DATE: 04/19/17	CHECKED: SB	PROJECT No.	SHEET No.
SCALE: 1" = 20'	APPROVED: SB	14-1056	2 OF 4
DRAWN: SB	DWG. No: D14-1060P		

P:\14-1056 Sunspire CLF\Akerman\KA DWG\SV-141056 Plot.dwg Wednesday, January 10, 2018 2:41:52 PM