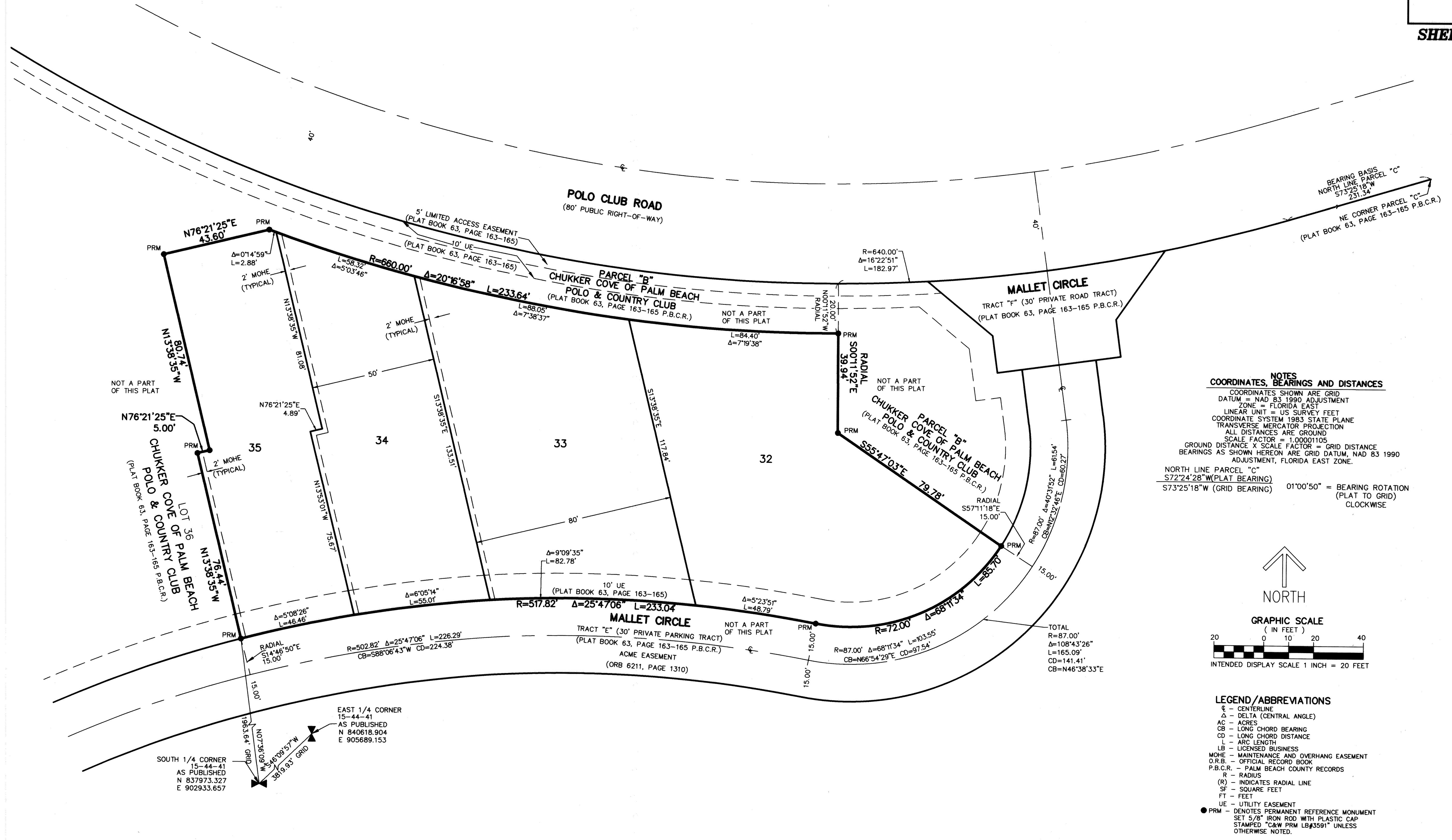


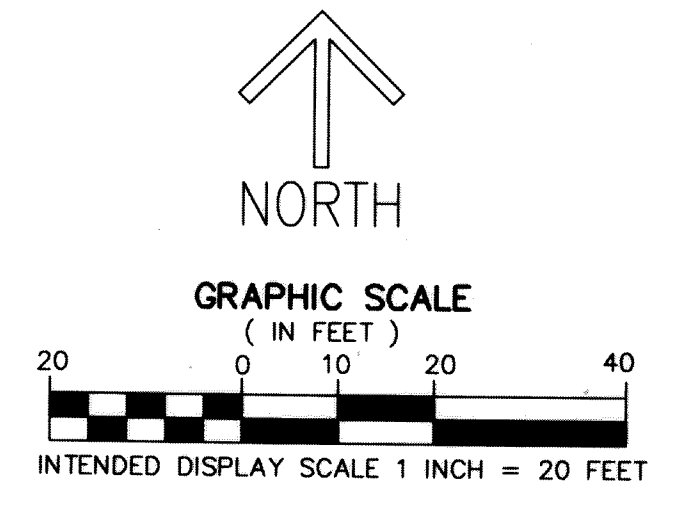
CHUKKER COVE REPLAT

BEING A REPLAT OF LOTS 32 THROUGH 35, CHUKKER COVE OF PALM BEACH POLO & COUNTRY CLUB WELLINGTON P.U.D.
 ACCORDING TO THE PLAT THEREOF, AS RECORDED IN PLAT BOOK 63, PAGES 163 THROUGH 165
 OF THE PUBLIC RECORDS OF PALM BEACH COUNTY,
 LYING IN SECTION 15, TOWNSHIP 44 SOUTH, RANGE 41 EAST, VILLAGE OF WELLINGTON, PALM BEACH COUNTY, FLORIDA

THIS INSTRUMENT PREPARED BY
 DAVID P. LINDLEY
 OF
CAULFIELD and WHEELER, INC.
 SURVEYORS - ENGINEERS - PLANNERS
 7900 GLADES ROAD, SUITE 100
 BOCA RATON, FLORIDA 33434 - (561)392-1991
 CERTIFICATE OF AUTHORIZATION NO. LB3591
 JANUARY-2018



NOTES
 COORDINATES, BEARINGS AND DISTANCES
 COORDINATES SHOWN ARE GRID
 DATUM = NAD 83 1980 ADJUSTMENT
 ZONE = FLORIDA EAST
 LINEAR UNIT = US SURVEY FEET
 COORDINATE SYSTEM 1983 STATE PLANE
 TRANSVERSE MERCATOR PROJECTION
 ALL DISTANCES ARE GROUND
 SCALE FACTOR = 1.00001105
 GROUND DISTANCE X SCALE FACTOR = GRID DISTANCE
 BEARINGS AS SHOWN HEREON ARE GRID DATUM, NAD 83 1990
 ADJUSTMENT, FLORIDA EAST ZONE.
 NORTH LINE PARCEL "C"
 S72°24'28"W (PLAT BEARING)
 S73°25'18"W (GRID BEARING) 01°00'50" = BEARING ROTATION
 (PLAT TO GRID) CLOCKWISE



LEGEND/ABBREVIATIONS
 CL - CENTERLINE
 Δ - DELTA (CENTRAL ANGLE)
 AC - ACRES
 CB - LONG CHORD BEARING
 CD - LONG CHORD DISTANCE
 L - ARC LENGTH
 LB - LICENSED BUSINESS
 MOHE - MAINTENANCE AND OVERHANG EASEMENT
 O.R.B. - OFFICIAL RECORD BOOK
 P.B.C.R. - PALM BEACH COUNTY RECORDS
 R - RADIUS
 (R) - INDICATES RADIAL LINE
 SF - SQUARE FEET
 FT - FEET
 UE - UTILITY EASEMENT
 ● PRM - DENOTES PERMANENT REFERENCE MONUMENT
 SET 5/8" IRON ROD WITH PLASTIC CAP
 STAMPED 'C&W PRM LB3591' UNLESS
 OTHERWISE NOTED.