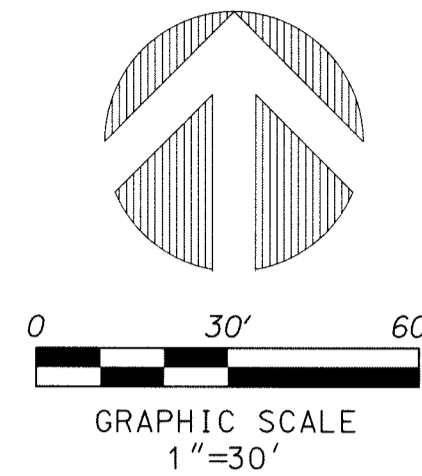


PERIMETER

SURVEYING & MAPPING
Certificate of Authorization No. LB7264
Prepared by: Jeff S. Hodapp, P.S.M.
947 Clint Moore Road
Boca Raton, Florida 33487
Tel: (561) 241-9988
Fax: (561) 241-5182

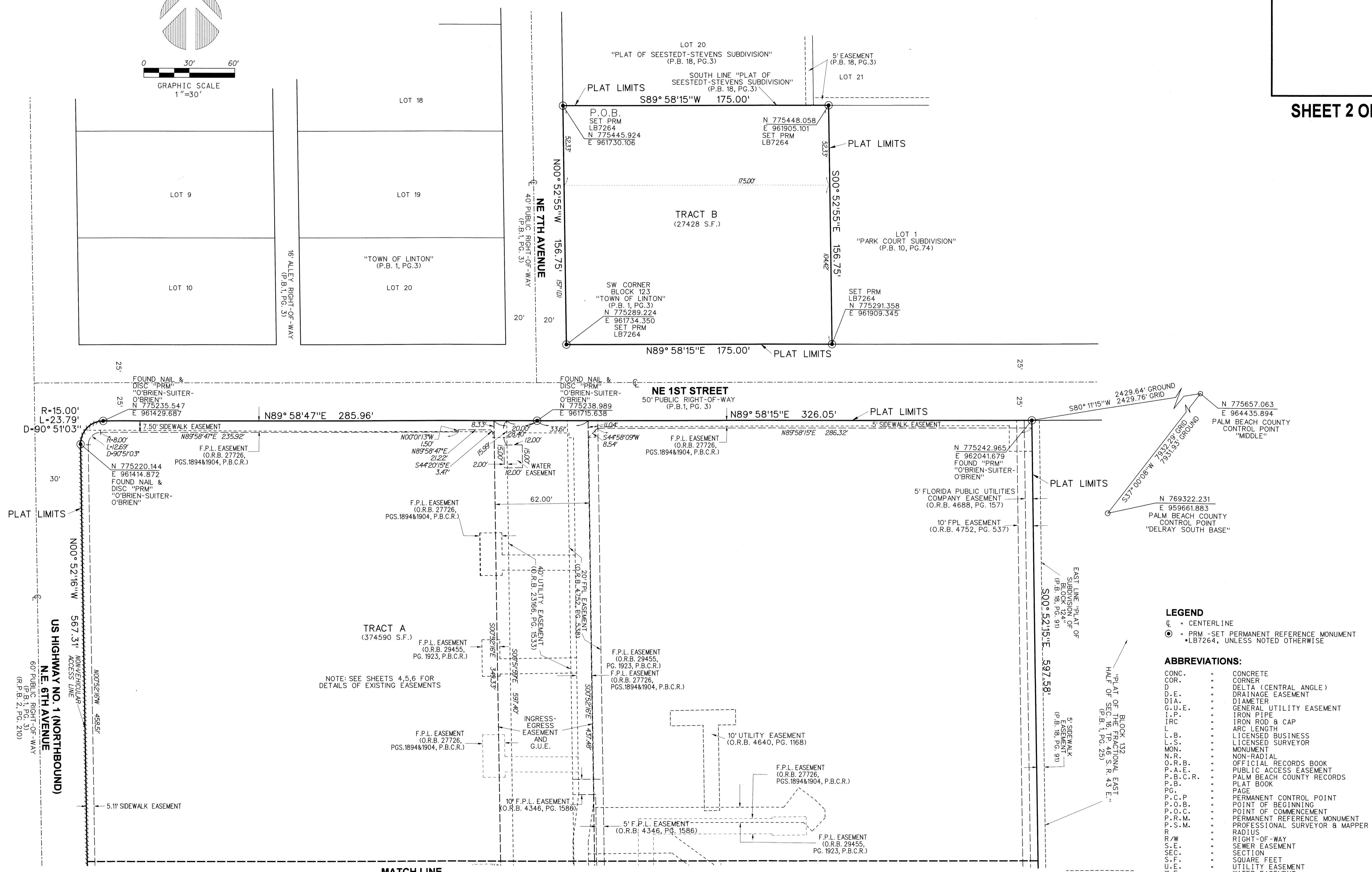


ATLANTIC CROSSING

A REPLAT OF A PORTION OF "CDS DELRAY REDEVELOPMENT" (P.B. 116, PGS. 172-182, P.B.C.R.),
TOGETHER WITH A PORTION OF BLOCK 123, "TOWN OF LINTON" (P.B. 1, PG. 3, P.B.C.R.)
IN SECTION 16, TOWNSHIP 46 SOUTH, RANGE 43 EAST, CITY OF DELRAY BEACH, PALM BEACH COUNTY, FLORIDA.
NOVEMBER, 2017

81

SHEET 2 OF 6



MATCH LINE
SEE SHEET 3

LEGEND
⊙ = CENTERLINE
⊙ = PRM - SET PERMANENT REFERENCE MONUMENT
• LB7264, UNLESS NOTED OTHERWISE

ABBREVIATIONS:
CONC. = CONCRETE
COR. = CORNER
D.E. = DELTA (CENTRAL ANGLE)
DIA. = DRAINAGE EASEMENT
DIA. = DIAMETER
G.U.E. = GENERAL UTILITY EASEMENT
I.P. = IRON PIPE
IRC = IRON ROD & CAP
L = ARC LENGTH
L.B. = LICENSED BUSINESS
L.S. = LICENSED SURVEYOR
MON. = MONUMENT
N.R. = NON-RADIAL
O.R.B. = OFFICIAL RECORDS BOOK
P.A.E. = PUBLIC ACCESS EASEMENT
P.B.C.R. = PALM BEACH COUNTY RECORDS
P.B. = PLAT BOOK
PG. = PAGE
P.C.P. = PERMANENT CONTROL POINT
P.O.B. = POINT OF BEGINNING
P.O.C. = POINT OF COMMENCEMENT
P.R.M. = PERMANENT REFERENCE MONUMENT
P.S.M. = PROFESSIONAL SURVEYOR & MAPPER
R = RADIUS
R/W = RIGHT-OF-WAY
S.E. = SEWER EASEMENT
SEC. = SECTION
S.F. = SQUARE FEET
U.E. = UTILITY EASEMENT
W.E. = WATER EASEMENT