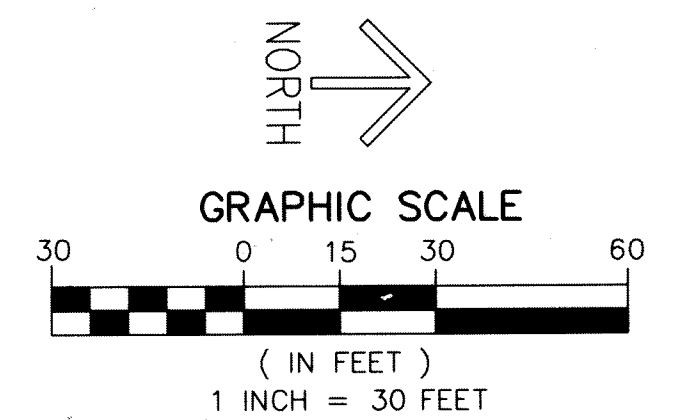
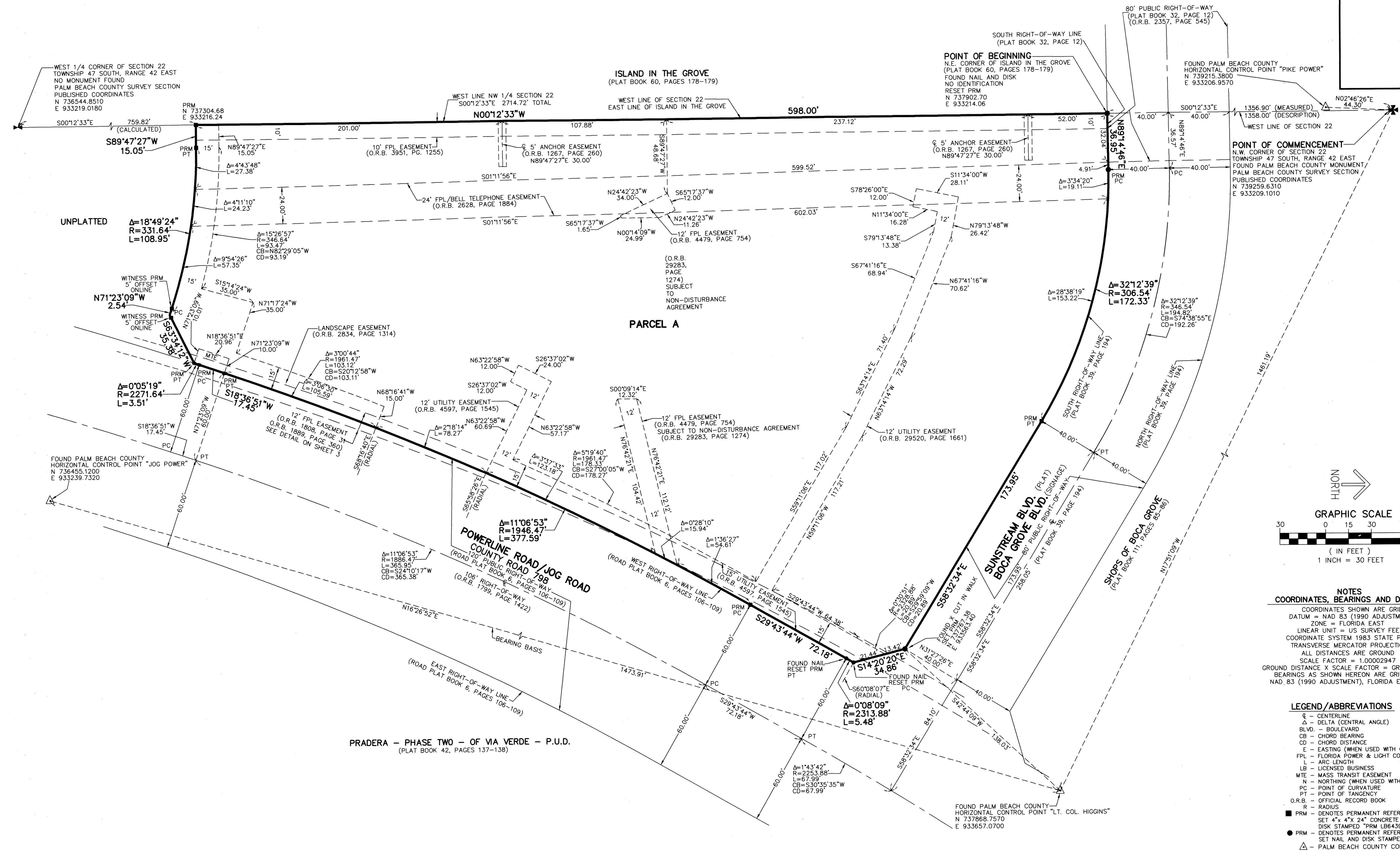


GROVE CENTRE OFFICE MUPD

A PORTION OF THE NORTHWEST ONE-QUARTER OF SECTION 22, TOWNSHIP 47 SOUTH, RANGE 42 EAST, PALM BEACH COUNTY, FLORIDA

THIS INSTRUMENT WAS PREPARED BY
LUIS J. ORTIZ
PROFESSIONAL SURVEYOR AND MAPPER, #7006
STATE OF FLORIDA
IN THE OFFICE OF BASELINE ENGINEERING AND LAND SURVEYING INC.
1400 N.W. 1ST COURT, BOCA RATON, FL. 33432
(561) 417-0700
LICENSED BUSINESS #6439



NOTES
COORDINATES, BEARINGS AND DISTANCES
 COORDINATES SHOWN ARE GRID
 DATUM = NAD 83 (1990 ADJUSTMENT)
 ZONE = FLORIDA EAST
 LINEAR UNIT = US SURVEY FEET
 COORDINATE SYSTEM 1983 STATE PLANE
 TRANSVERSE MERCATOR PROJECTION
 ALL DISTANCES ARE GROUND
 SCALE FACTOR = 1.00002947
 GROUND DISTANCE X SCALE FACTOR = GRID DISTANCE
 BEARINGS AS SHOWN HEREON ARE GRID DATUM,
 NAD 83 (1990 ADJUSTMENT), FLORIDA EAST ZONE.

LEGEND/ABBREVIATIONS
 C - CENTERLINE
 Δ - DELTA (CENTRAL ANGLE)
 BLVD. - BOULEVARD
 CB - CHORD BEARING
 CD - CHORD DISTANCE
 E - EASTING (WHEN USED WITH COORDINATES)
 FPL - FLORIDA POWER & LIGHT COMPANY
 L - ARC LENGTH
 LB - LICENSED BUSINESS
 MTE - MASS TRANSIT EASEMENT
 N - NORTHING (WHEN USED WITH COORDINATES)
 PC - POINT OF CURVATURE
 PT - POINT OF TANGENCY
 O.R.B. - OFFICIAL RECORD BOOK
 R - RADIUS
 ■ PRM - DENOTES PERMANENT REFERENCE MONUMENT
 SET 4" X 4" X 24" CONCRETE MONUMENT WITH
 DISK STAMPED "PRM LB6439"
 ● PRM - DENOTES PERMANENT REFERENCE MONUMENT
 SET NAIL AND DISK STAMPED "PRM LB6439"
 △ - PALM BEACH COUNTY CONTROL POINT

PRADERA - PHASE TWO - OF VIA VERDE - P.U.D.
(PLAT BOOK 42, PAGES 137-138)