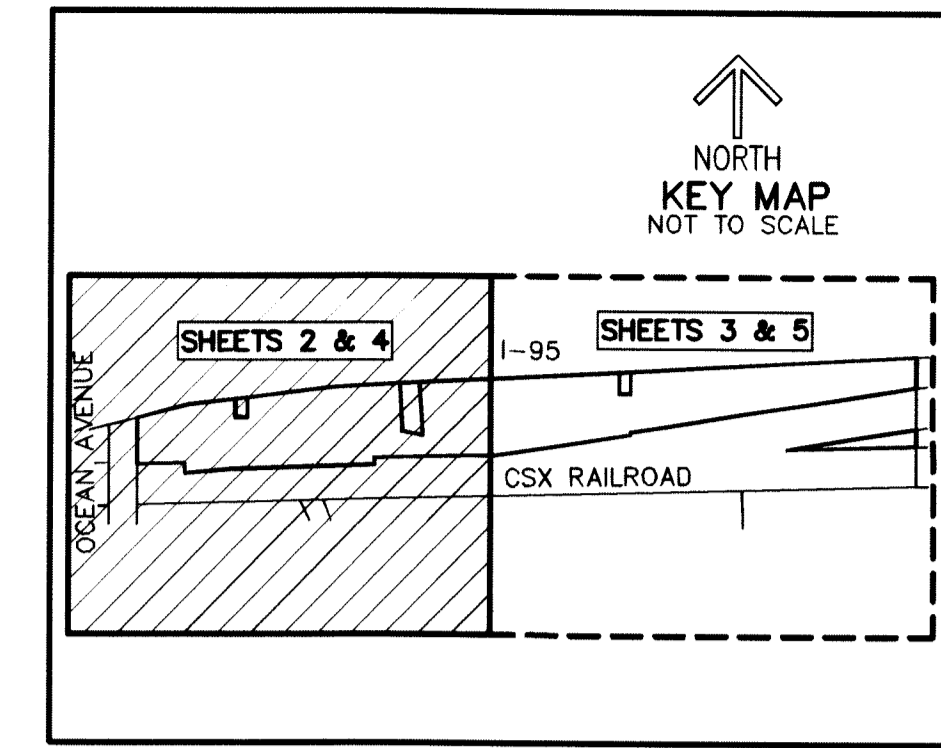


THIS INSTRUMENT PREPARED BY  
 DAVID P. LINDLEY  
 OF  
**CAULFIELD and WHEELER, INC.**  
 SURVEYORS — ENGINEERS — PLANNERS  
 7900 GLADES ROAD, SUITE 100  
 BOCA RATON, FLORIDA 33434 — (561)392-1991  
 CERTIFICATE OF AUTHORIZATION NO. LB 3591

# STOR-All LUXURY RV & BOAT STORAGE

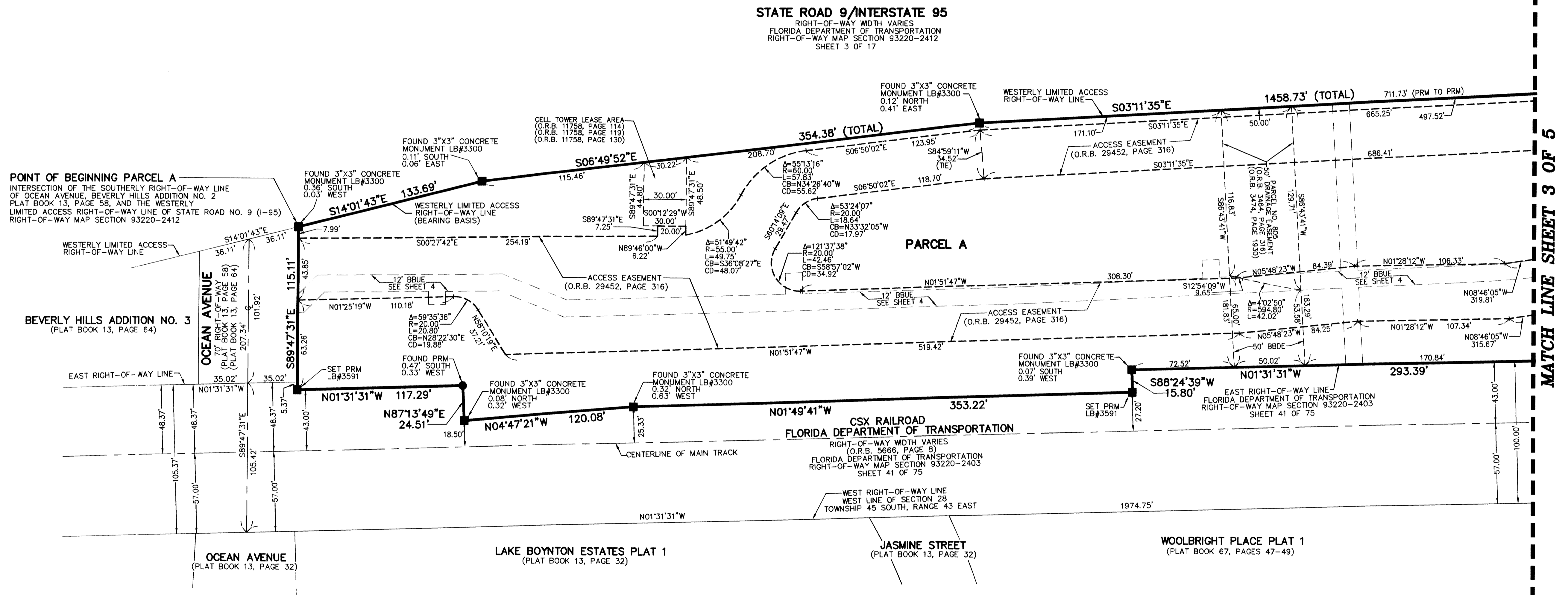
BEING A PORTION OF THE NORTHWEST QUARTER OF SECTION 28, TOWNSHIP 45 SOUTH, RANGE 43 EAST,  
 CITY OF BOYNTON BEACH, PALM BEACH COUNTY, FLORIDA



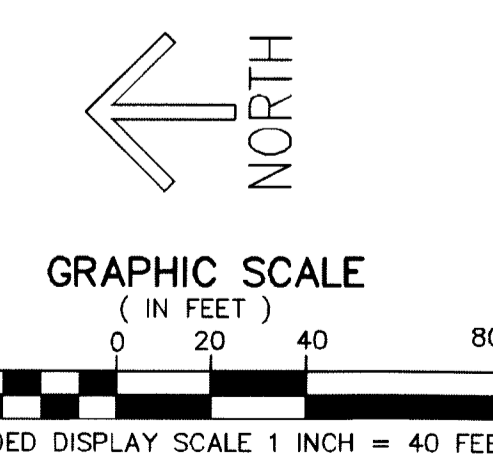
SHEET INDEX

SHEET 1	COVER
SHEET 2	MAP SHEET
SHEET 3	MAP SHEET
SHEET 4	UTILITY EASEMENT DETAIL
SHEET 5	UTILITY EASEMENT DETAIL

52  
 SHEET 2 OF 5



MATCH LINE SHEET 3 OF 5



- LEGEND/ABBREVIATIONS**
- CL - CENTERLINE
  - Δ - DELTA (CENTRAL ANGLE)
  - CB - CHORD BEARING
  - CD - CHORD DISTANCE
  - BBDE - BOYNTON BEACH DRAINAGE EASEMENT
  - BBUE - BOYNTON BEACH UTILITY EASEMENT
  - L - ARC LENGTH
  - LB - LICENSED BUSINESS
  - O.R.B. - OFFICIAL RECORD BOOK
  - R - RADIUS
  - SET PRM - INDICATES PERMANENT REFERENCE MONUMENT  
 4"x4"x24" CONCRETE MONUMENT WITH METAL DISK  
 STAMPED "C&W PRM LB#3591"  
 UNLESS OTHERWISE NOTED.
  - PRM - INDICATES PERMANENT REFERENCE MONUMENT  
 NAIL AND DISK STAMPED LB#3300  
 UNLESS OTHERWISE NOTED.