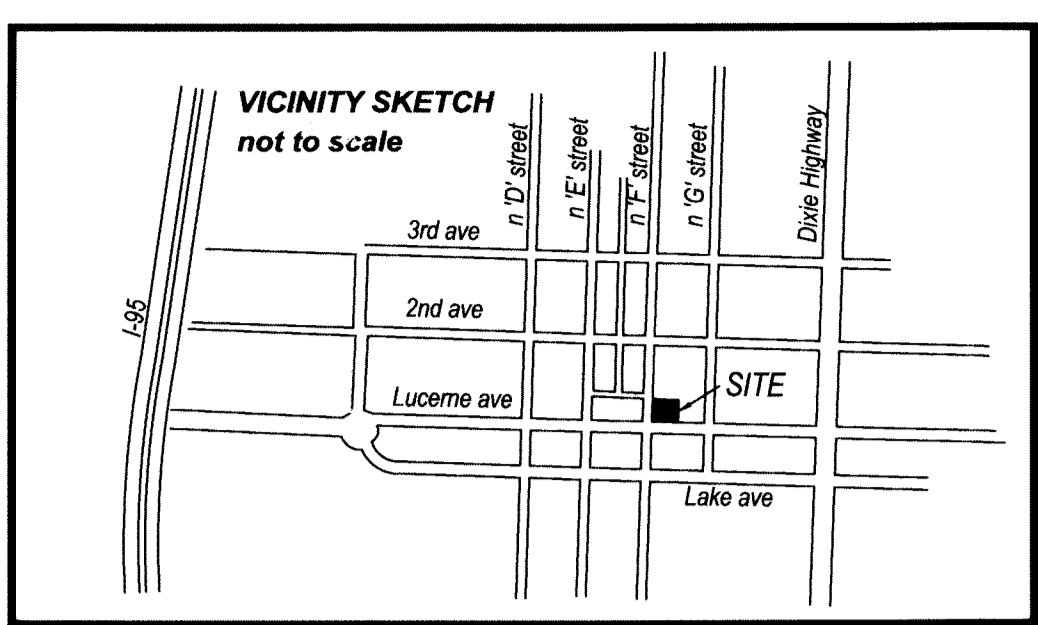


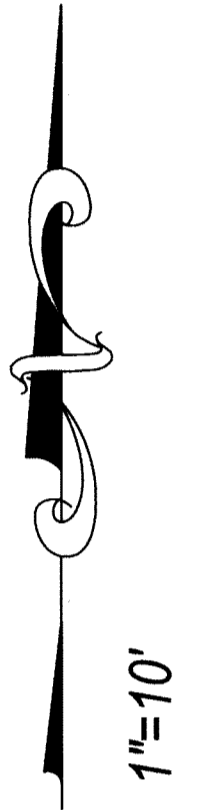
STATE OF FLORIDA **50**
 COUNTY OF PALM BEACH
 THIS PLAT HAS BEEN FILED FOR
 RECORD AT _____
 THIS _____ DAY OF _____, 201____
 AND DULY RECORDED IN PLAT
 BOOK _____
 ON PAGE _____
 SHARON R. BOCK
 CLERK & COMPTROLLER
 PALM BEACH COUNTY
 BY: _____

**WEST VILLAGE
 ARTIST LOFT**
 BEING A REPLAT OF LOTS 26-31, BLOCK 12,
 THE PALM BEACH FARMS CO. PLAT NO. 2
 TOWNSITE OF LUCERNE,
 AS RECORDED IN PLAT BOOK 2, PAGE 29
 PUBLIC RECORDS OF
 PALM BEACH COUNTY, FLORIDA.
 SECTION 21, TOWNSHIP 44 SOUTH, RANGE 43 EAST
 LYING IN THE CITY OF LAKE WORTH,
 PALM BEACH COUNTY, FLORIDA

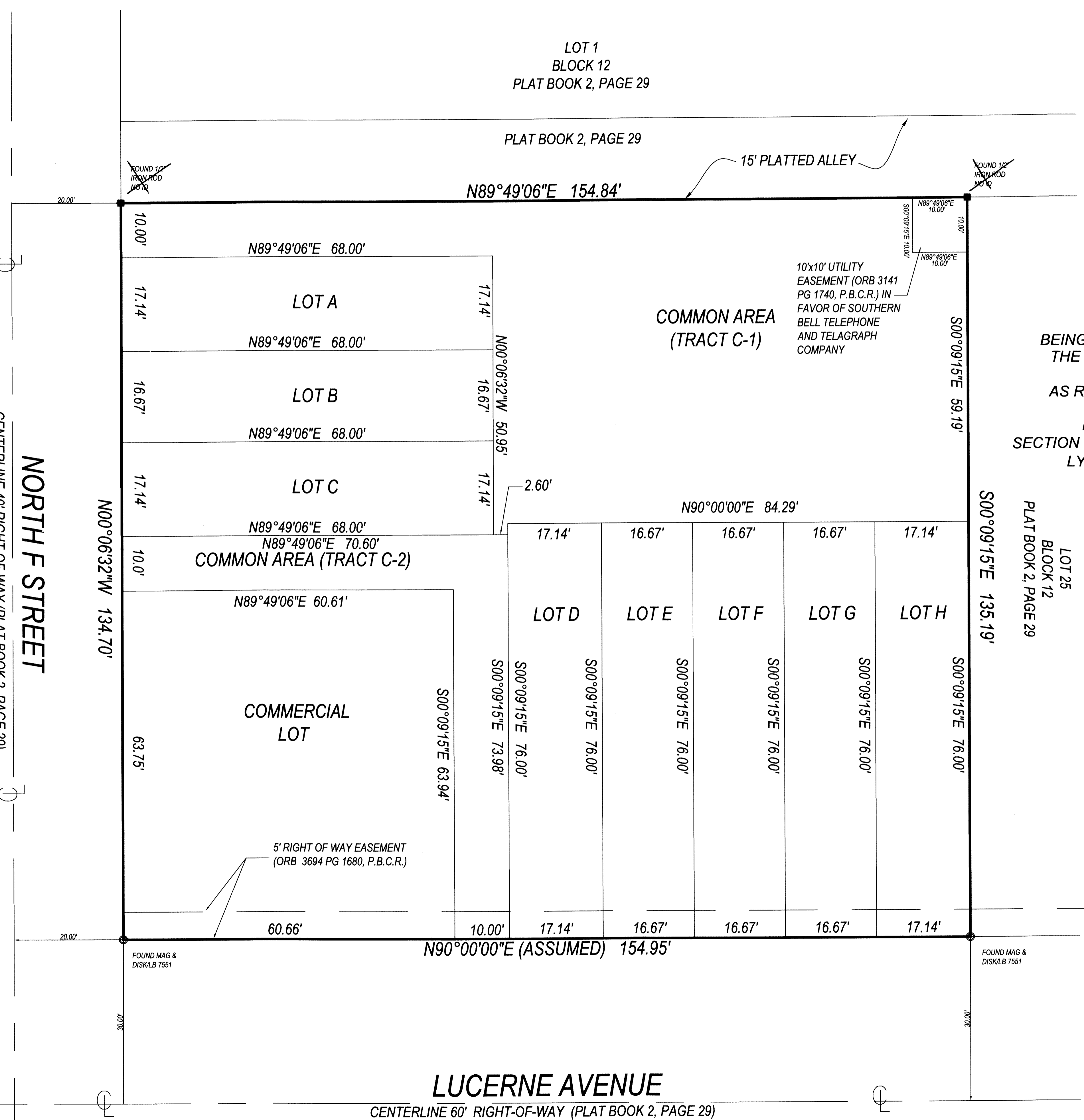
LOT 25
 BLOCK 12
 PLAT BOOK 2, PAGE 29



SHEET 2 OF 2



NORTH F STREET
 CENTERLINE 40' RIGHT-OF-WAY (PLAT BOOK 2, PAGE 29)



LUCERNE AVENUE
 CENTERLINE 60' RIGHT-OF-WAY (PLAT BOOK 2, PAGE 29)

- LEGEND
- SET 4"x 4" CONCRETE MONUMENT AND BRASS DISK "LB 6788"
 - SET 1/2" IRON ROD AND CAP "LB 6788"
 - FOUND 4"x 4" CONCRETE MONUMENT (PERMANENT REFERENCE MONUMENT)
 - FOUND NAIL AND DISK
 - ⊕ CENTERLINE

PM SURVEYING
 4546 CAMBRIDGE STREET
 WEST PALM BEACH, FL. 33415
 (561) 478-7764 FAX 478-1094
 VISIT US AT PMSURVEYING.NET
 JOB # 15010091