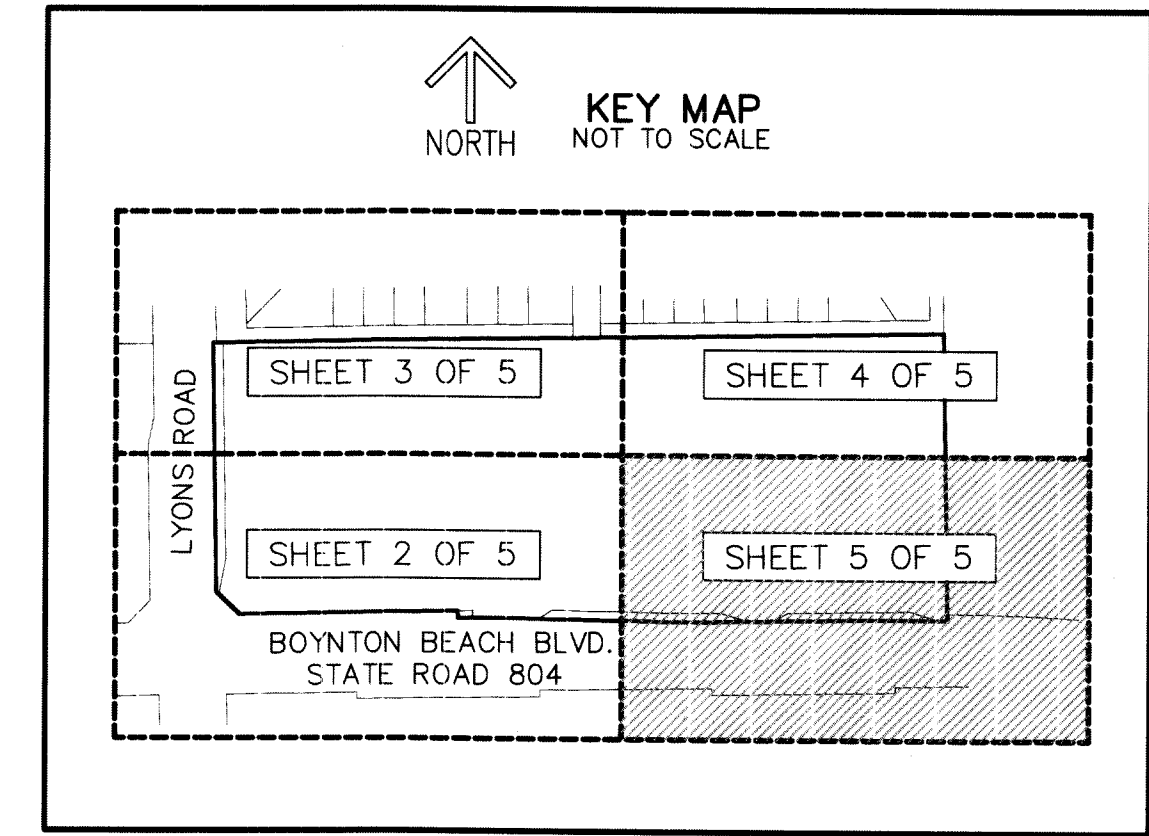


THIS INSTRUMENT PREPARED BY  
 DAVID P. LINDLEY  
 OF  
**CAULFIELD and WHEELER, INC.**  
 SURVEYORS - ENGINEERS - PLANNERS  
 7900 GLADES ROAD, SUITE 100  
 BOCA RATON, FLORIDA 33434 - (561)392-1991  
 CERTIFICATE OF AUTHORIZATION NO. LB3591

# COBBLESTONE PLAZA

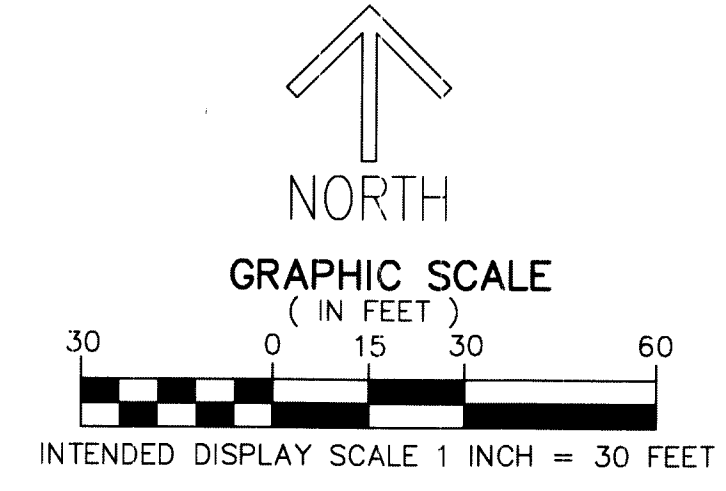
BEING A REPLAT OF TRACT B, WEST BOYNTON FARMS,  
 AS RECORDED IN PLAT BOOK 104, PAGES 9 THROUGH 11  
 OF THE PUBLIC RECORDS OF PALM BEACH COUNTY, FLORIDA,  
 LYING IN SECTION 20, TOWNSHIP 45 SOUTH, RANGE 42 EAST,  
 PALM BEACH COUNTY, FLORIDA



48

SHEET 5 OF 5

**NOTES**  
**COORDINATES, BEARINGS AND DISTANCES**  
 COORDINATES SHOWN ARE GRID  
 DATUM = NAD 83 (90 ADJUSTMENT)  
 ZONE = FLORIDA EAST  
 LINEAR UNIT = US SURVEY FEET  
 COORDINATE SYSTEM 1983 STATE PLANE  
 TRANSVERSE MERCATOR PROJECTION  
 ALL DISTANCES ARE GROUND  
 SCALE FACTOR = 1.00002236  
 GROUND DISTANCE X SCALE FACTOR = GRID DISTANCE  
 BEARINGS AS SHOWN HEREON ARE GRID DATUM,  
 NAD 83 (90 ADJUSTMENT), FLORIDA EAST ZONE.



**LEGEND/ABBREVIATIONS**  
 Δ - DELTA (CENTRAL ANGLE)  
 E - EASTING  
 FPL - FLORIDA POWER AND LIGHT  
 FDOT - FLORIDA DEPARTMENT OF TRANSPORTATION  
 L - ARC LENGTH  
 LB - LICENSED BUSINESS  
 LAE - LIMITED ACCESS EASEMENT  
 L.W.D.D. - LAKE WORTH DRAINAGE DISTRICT  
 N - NORTHING  
 O.R.B. - OFFICIAL RECORD BOOK  
 R - RADIUS  
 R/W - RIGHT-OF-WAY  
 UE - UTILITY EASEMENT  
 ■ PRM - DENOTES PERMANENT REFERENCE MONUMENT  
 4" x 4" x 24" CONCRETE MONUMENT WITH  
 ALUMINUM DISK STAMPED "C&W PRM LB3591"  
 △ - PALM BEACH COUNTY CONTROL POINT

