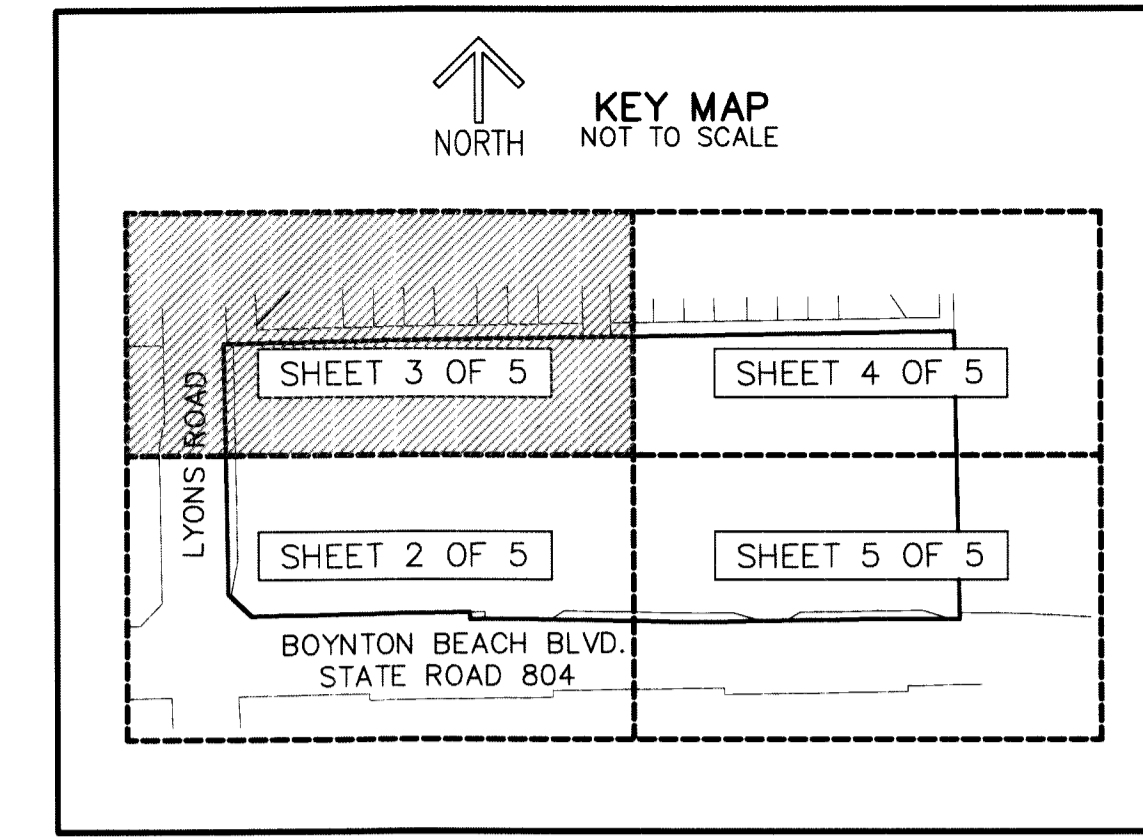


THIS INSTRUMENT PREPARED BY  
 DAVID P. LINDLEY  
 OF  
**CAULFIELD and WHEELER, INC.**  
 SURVEYORS - ENGINEERS - PLANNERS  
 7900 GLADES ROAD, SUITE 100  
 BOCA RATON, FLORIDA 33434 - (561)392-1991  
 CERTIFICATE OF AUTHORIZATION NO. LB3591

# COBBLESTONE PLAZA

BEING A REPLAT OF TRACT B, WEST BOYNTON FARMS,  
 AS RECORDED IN PLAT BOOK 104, PAGES 9 THROUGH 11  
 OF THE PUBLIC RECORDS OF PALM BEACH COUNTY, FLORIDA,  
 LYING IN SECTION 20, TOWNSHIP 45 SOUTH, RANGE 42 EAST,  
 PALM BEACH COUNTY, FLORIDA

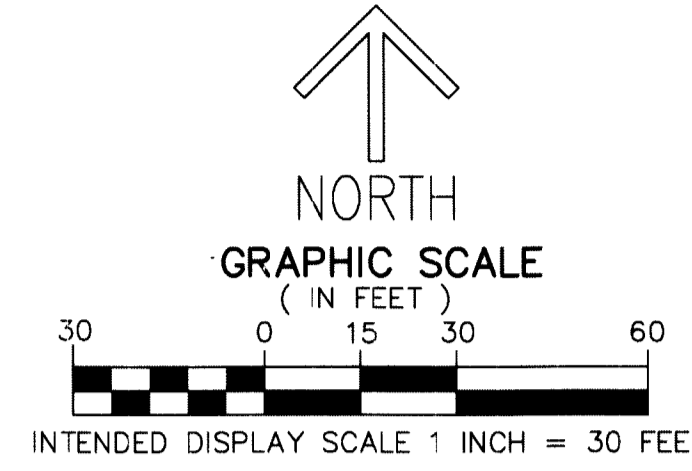


46

SHEET 3 OF 5

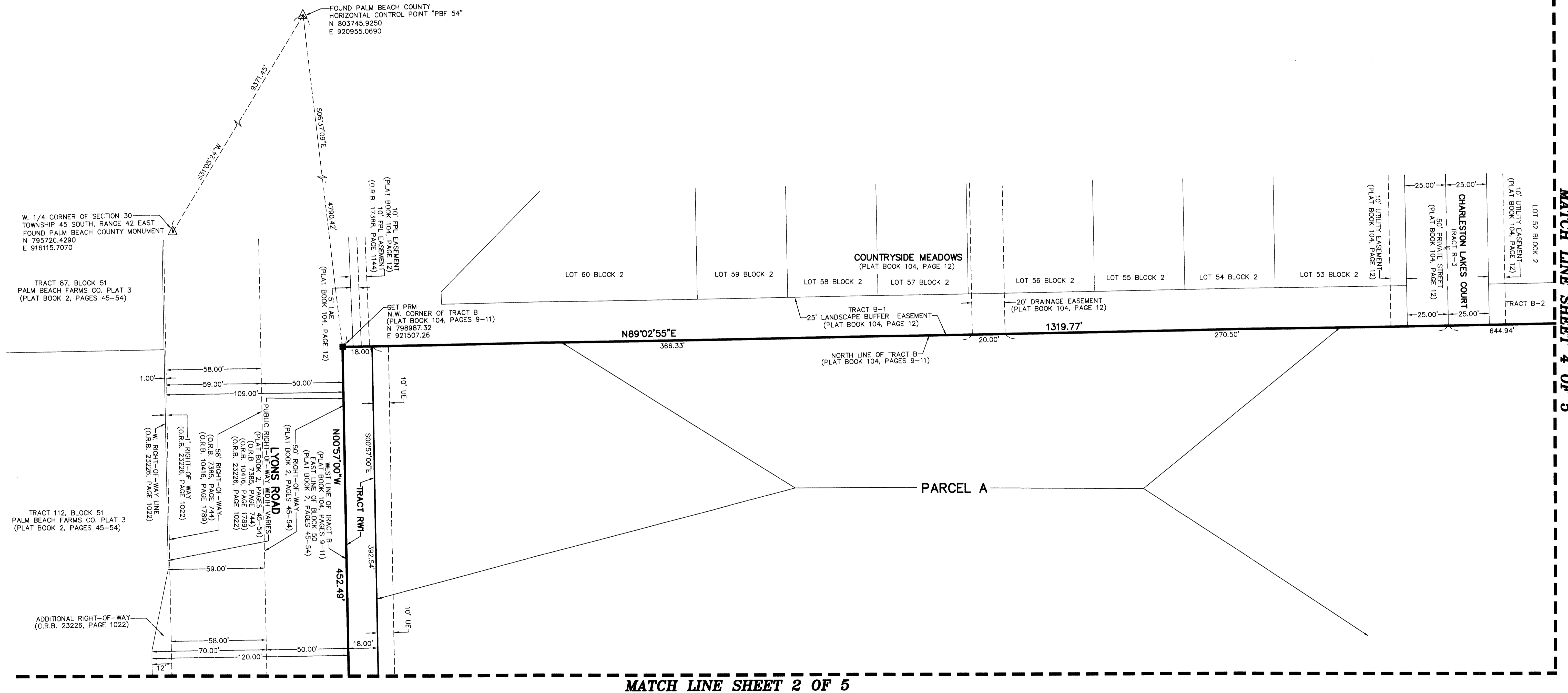
**NOTES**  
**COORDINATES, BEARINGS AND DISTANCES**

COORDINATES SHOWN ARE GRID  
 DATUM = NAD 83 (90 ADJUSTMENT)  
 ZONE = FLORIDA EAST  
 LINEAR UNIT = US SURVEY FEET  
 COORDINATE SYSTEM 1983 STATE PLANE  
 TRANSVERSE MERCATOR PROJECTION  
 ALL DISTANCES ARE GROUND  
 SCALE FACTOR = 1.00002236  
 GROUND DISTANCE X SCALE FACTOR = GRID DISTANCE  
 BEARINGS AS SHOWN HEREON ARE GRID DATUM,  
 NAD 83 (90 ADJUSTMENT), FLORIDA EAST ZONE.



**LEGEND/ABBREVIATIONS**

- Δ - DELTA (CENTRAL ANGLE)
- E - EASTING
- FPL - FLORIDA POWER AND LIGHT
- FDOT - FLORIDA DEPARTMENT OF TRANSPORTATION
- L - ARC LENGTH
- LB - LICENSED BUSINESS
- LAE - LIMITED ACCESS EASEMENT
- L.W.D.D. - LAKE WORTH DRAINAGE DISTRICT
- N - NORTHING
- O.R.B. - OFFICIAL RECORD BOOK
- R - RADIUS
- R/W - RIGHT-OF-WAY
- UE - UTILITY EASEMENT
- PRM - DENOTES PERMANENT REFERENCE MONUMENT  
 4" X 4" X 24" CONCRETE MONUMENT WITH  
 ALUMINUM DISK STAMPED "C&W PRM LB3591"
- ▲ - PALM BEACH COUNTY CONTROL POINT



MATCH LINE SHEET 2 OF 5

MATCH LINE SHEET 4 OF 5