

ARTISTRY

BEING A REPLAT OF TRACT "GH", ALTON PCD,
 AS RECORDED IN PLAT BOOK 118, PAGES 197 THROUGH 206, OF THE PUBLIC RECORDS OF PALM BEACH COUNTY, FLORIDA,
 LYING IN SECTIONS 26 AND 35, TOWNSHIP 41 SOUTH, RANGE 42 EAST, CITY OF PALM BEACH GARDENS, PALM BEACH COUNTY, FLORIDA

THIS INSTRUMENT PREPARED BY
 DAVID P. LINDLEY
 OF
CAULFIELD and WHEELER, INC.
 SURVEYORS - ENGINEERS - PLANNERS
 7900 GLADES ROAD, SUITE 100
 BOCA RATON, FLORIDA 33434 - (561)392-1991
 CERTIFICATE OF AUTHORIZATION NO. LB3591
 JULY 2017

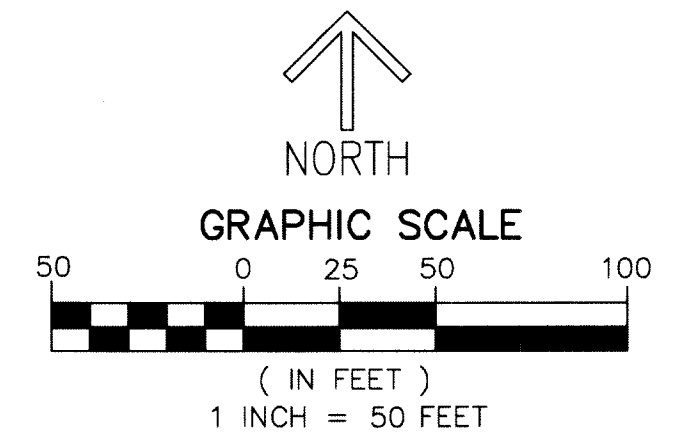
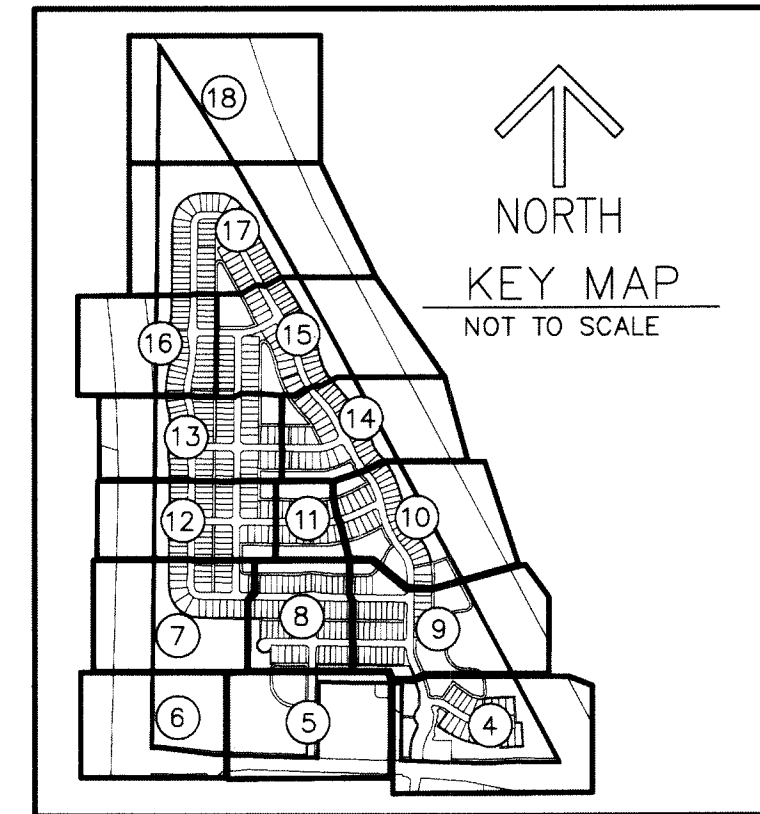
43

STATE OF FLORIDA
 COUNTY OF PALM BEACH
 THIS PLAT WAS FILED FOR
 RECORD AT _____ M.
 THIS _____ DAY OF _____
 A.D. 20____ AND DULY RECORDED
 IN PLAT BOOK _____ ON
 PAGES _____ AND _____

SHARON R. BOCK
 CLERK AND COMPTROLLER

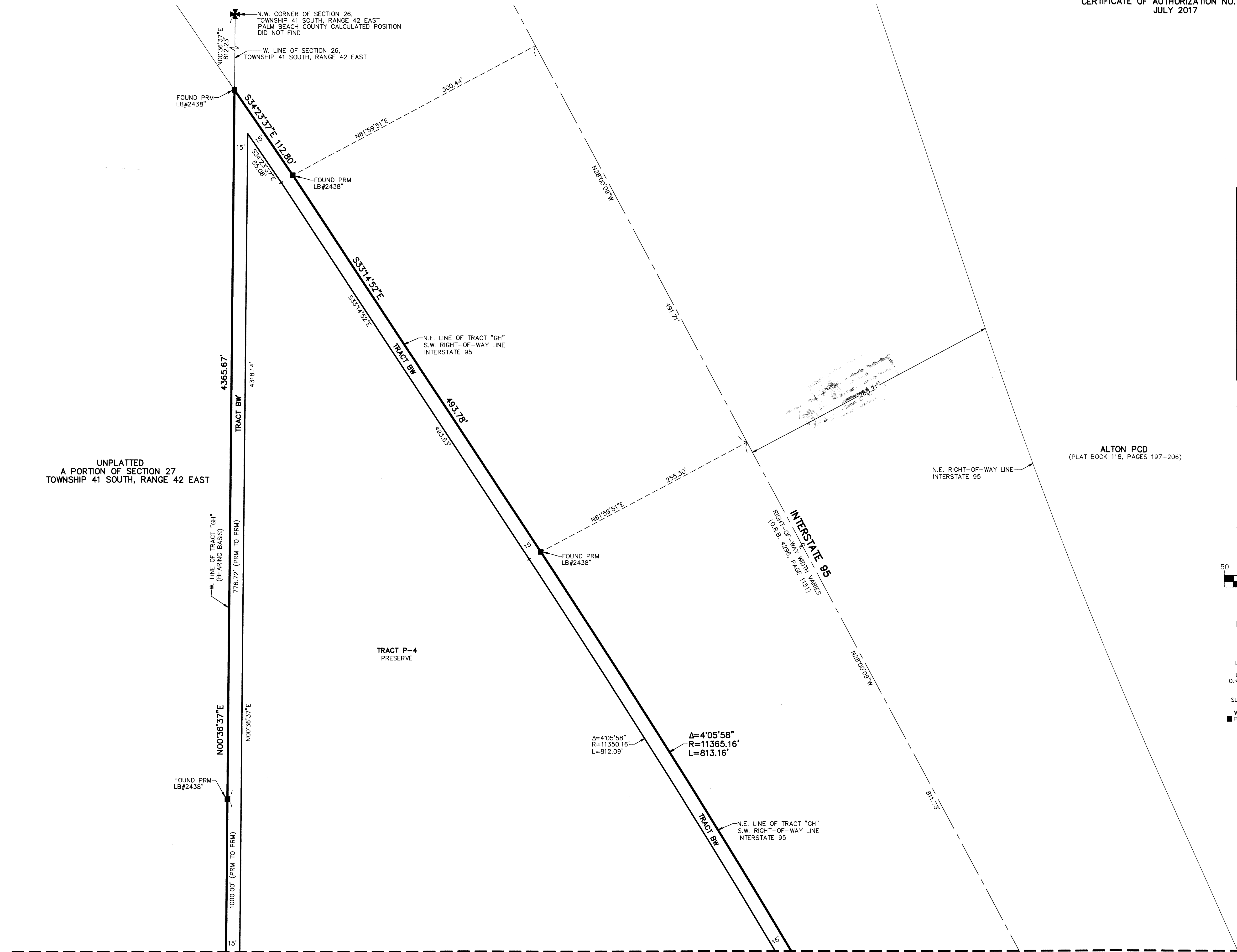
BY: _____
 DEPUTY CLERK

SHEET 18 OF 18



- LEGEND/ABBREVIATIONS**
- CL - CENTERLINE
 - Δ - DELTA (CENTRAL ANGLE)
 - CB - CHORD BEARING
 - CD - CHORD DISTANCE
 - L - ARC LENGTH
 - LAE - LIMITED ACCESS EASEMENT
 - LB - LICENSED BUSINESS
 - LSE - LIFT STATION EASEMENT
 - O.R.B. - OFFICIAL RECORD BOOK
 - R - RADIUS
 - (R) - INDICATES RADIAL LINE
 - SUAE - SEACOAST UTILITY AUTHORITY EASEMENT
 - UE - UTILITY EASEMENT
 - WME - WATER MANAGEMENT EASEMENT
 - PRM - DENOTES PERMANENT REFERENCE MONUMENT
 - - DENOTES PERMANENT CONTROL POINT

UNPLATTED
 A PORTION OF SECTION 27
 TOWNSHIP 41 SOUTH, RANGE 42 EAST



MATCH LINE SHEET 17 OF 18