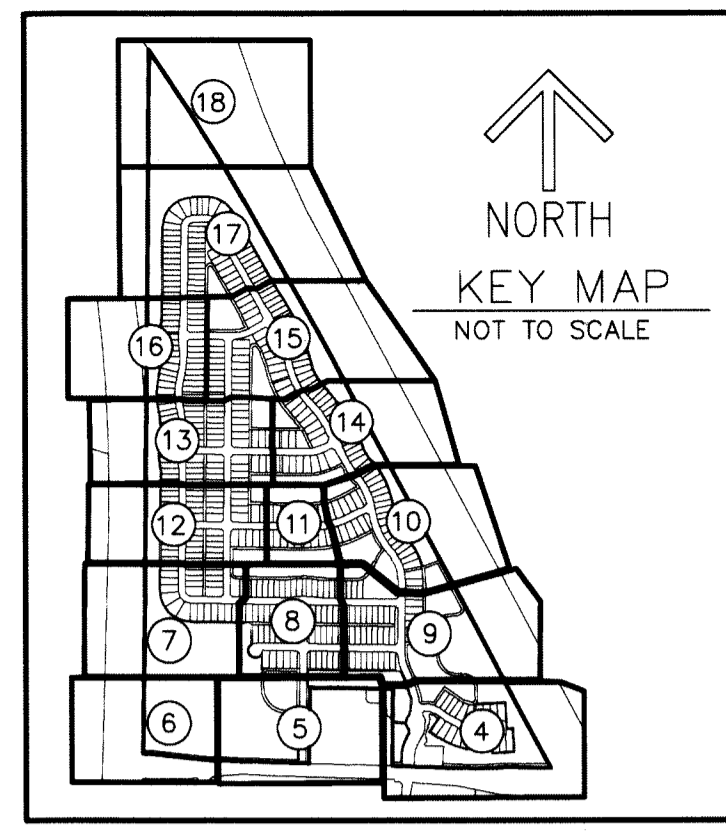


STATE OF FLORIDA
COUNTY OF PALM BEACH
THIS PLAT WAS FILED FOR
RECORD AT _____ M.
THIS _____ DAY OF _____
A.D. 20____ AND DULY RECORDED
IN PLAT BOOK _____ ON
PAGES _____ AND _____

SHARON R. BOCK
CLERK AND COMPTROLLER

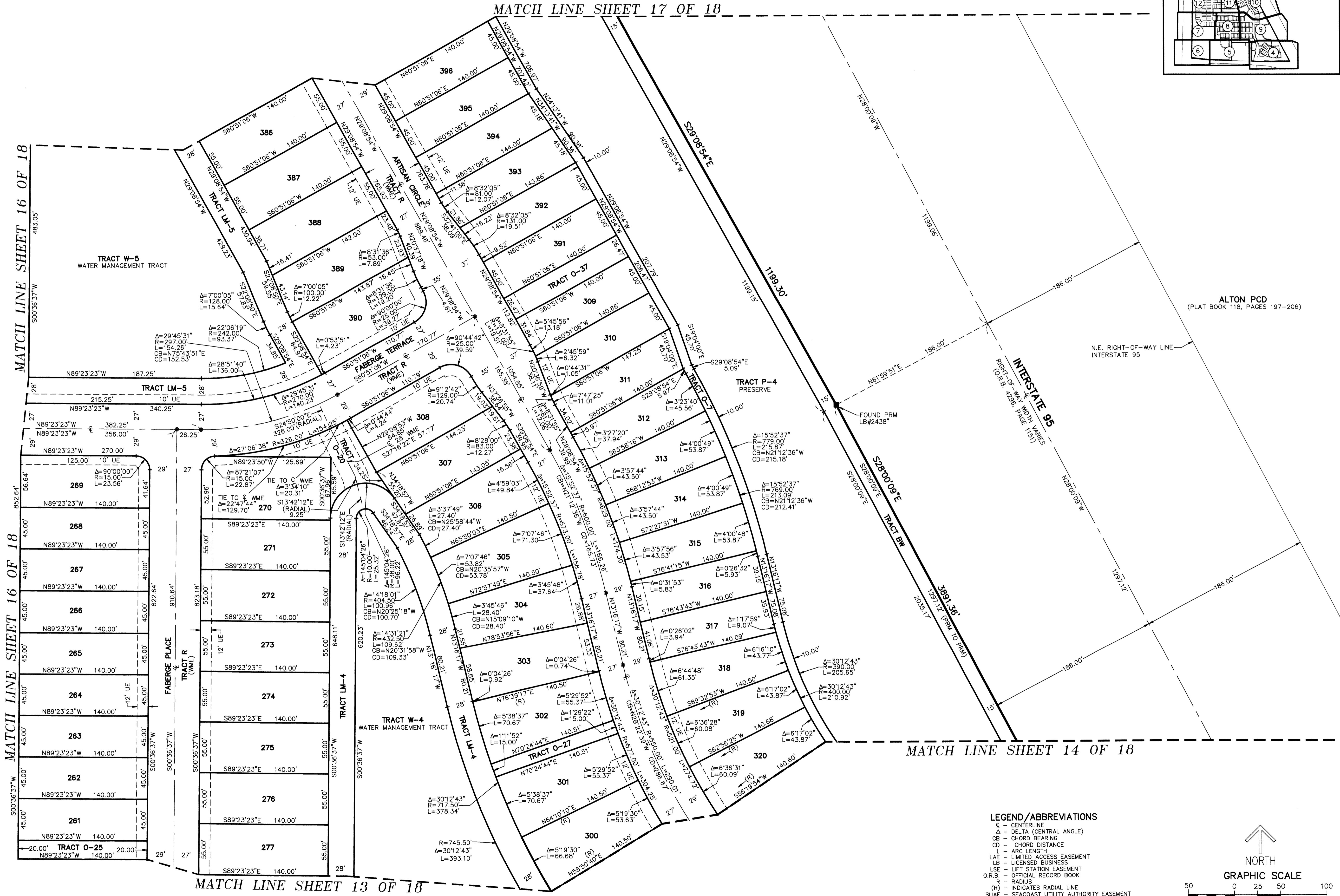
BY: _____
DEPUTY CLERK



ARTISTRY

BEING A REPLAT OF TRACT "GH", ALTON PCD,
AS RECORDED IN PLAT BOOK 118, PAGES 197 THROUGH 206, OF THE PUBLIC RECORDS OF PALM BEACH COUNTY, FLORIDA,
LYING IN SECTIONS 26 AND 35, TOWNSHIP 41 SOUTH, RANGE 42 EAST, CITY OF PALM BEACH GARDENS, PALM BEACH COUNTY, FLORIDA

MATCH LINE SHEET 17 OF 18



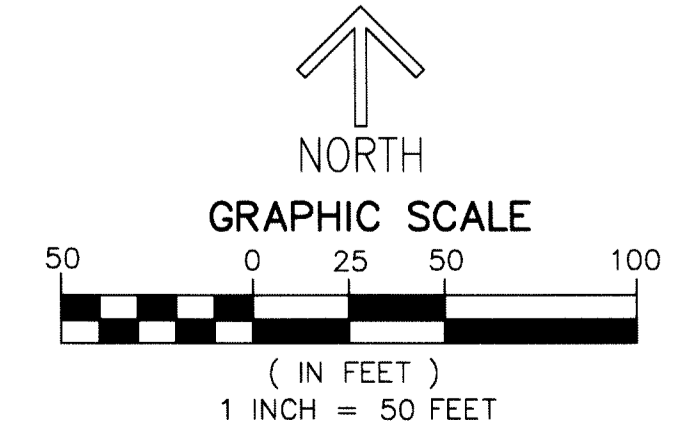
MATCH LINE SHEET 16 OF 18

MATCH LINE SHEET 16 OF 18

MATCH LINE SHEET 13 OF 18

MATCH LINE SHEET 14 OF 18

- LEGEND/ABBREVIATIONS**
- CL - CENTERLINE
 - Δ - DELTA (CENTRAL ANGLE)
 - CB - CHORD BEARING
 - CD - CHORD DISTANCE
 - L - ARC LENGTH
 - LAE - LIMITED ACCESS EASEMENT
 - LB - LICENSED BUSINESS
 - LSE - LIFT STATION EASEMENT
 - O.R.B. - OFFICIAL RECORD BOOK
 - R - RADIUS
 - (R) - INDICATES RADIAL LINE
 - SE - SEACOAST UTILITY AUTHORITY EASEMENT
 - UE - UTILITY EASEMENT
 - WME - WATER MANAGEMENT EASEMENT
 - - DENOTES PERMANENT REFERENCE MONUMENT
 - - DENOTES PERMANENT CONTROL POINT



ALTON PCD
(PLAT BOOK 118, PAGES 197-206)

INTERSTATE 95
RIGHT-OF-WAY WIDTH VARIES
(O.R.B. 4066, PAGE 1151)

N.E. RIGHT-OF-WAY LINE
INTERSTATE 95

FOUND PRM
LB#2438