

# ARTISTRY

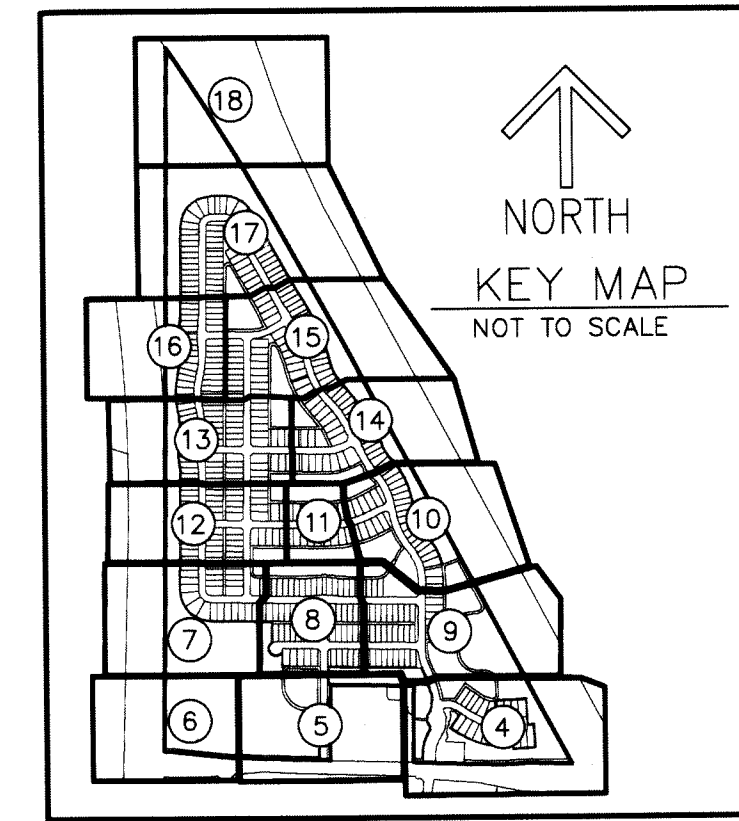
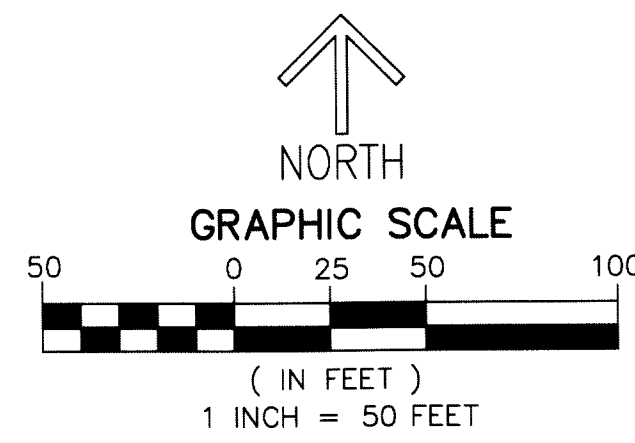
BEING A REPLAT OF TRACT "GH", ALTON PCD,  
AS RECORDED IN PLAT BOOK 118, PAGES 197 THROUGH 206, OF THE PUBLIC RECORDS OF PALM BEACH COUNTY, FLORIDA,  
LYING IN SECTIONS 26 AND 35, TOWNSHIP 41 SOUTH, RANGE 42 EAST, CITY OF PALM BEACH GARDENS, PALM BEACH COUNTY, FLORIDA

THIS INSTRUMENT PREPARED BY  
DAVID P. LINDLEY

OF  
**CAULFIELD and WHEELER, INC.**  
SURVEYORS - ENGINEERS - PLANNERS  
7900 GLADES ROAD, SUITE 100  
BOCA RATON, FLORIDA 33434 - (561)392-1991  
CERTIFICATE OF AUTHORIZATION NO. LB3591  
JULY 2017

## LEGEND/ABBREVIATIONS

- CL - CENTERLINE
- Δ - DELTA (CENTRAL ANGLE)
- CB - CHORD BEARING
- CD - CHORD DISTANCE
- L - ARC LENGTH
- LAE - LIMITED ACCESS EASEMENT
- LB - LICENSED BUSINESS
- LSE - LIFT STATION EASEMENT
- O.R.B. - OFFICIAL RECORD BOOK
- R - RADIUS
- (R) - INDICATES RADIAL LINE
- SUAE - SEACOAST UTILITY AUTHORITY EASEMENT
- UE - UTILITY EASEMENT
- WME - WATER MANAGEMENT EASEMENT
- PRM - DENOTES PERMANENT REFERENCE MONUMENT
- - DENOTES PERMANENT CONTROL POINT



# 30

STATE OF FLORIDA  
COUNTY OF PALM BEACH  
THIS PLAT WAS FILED FOR  
RECORD AT \_\_\_\_\_ M.  
THIS \_\_\_\_\_ DAY OF \_\_\_\_\_  
A.D. 20\_\_\_\_ AND DULY RECORDED  
IN PLAT BOOK \_\_\_\_\_ ON  
PAGES \_\_\_\_\_ AND \_\_\_\_\_

SHARON R. BOCK  
CLERK AND COMPTROLLER

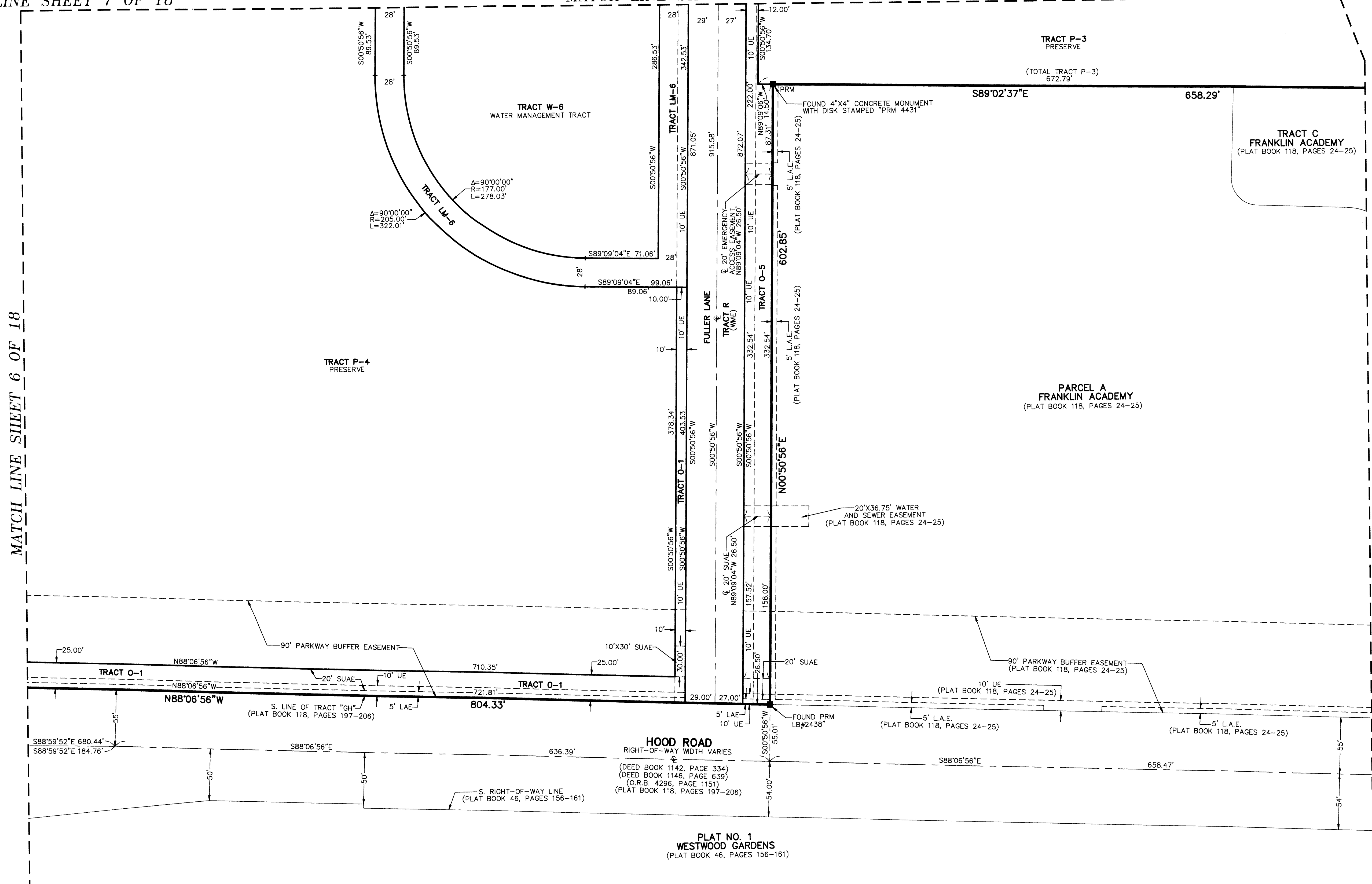
BY: \_\_\_\_\_  
DEPUTY CLERK

MATCH LINE SHEET 7 OF 18

MATCH LINE SHEET 8 OF 18

MATCH LINE SHEET 9 OF 18

SHEET 5 OF 18



**HOOD ROAD**  
RIGHT-OF-WAY WIDTH VARIES  
(DEED BOOK 1142, PAGE 334)  
(DEED BOOK 1146, PAGE 639)  
(O.R.B. 4296, PAGE 1151)  
(PLAT BOOK 118, PAGES 197-206)

**PLAT NO. 1**  
**WESTWOOD GARDENS**  
(PLAT BOOK 46, PAGES 156-161)