

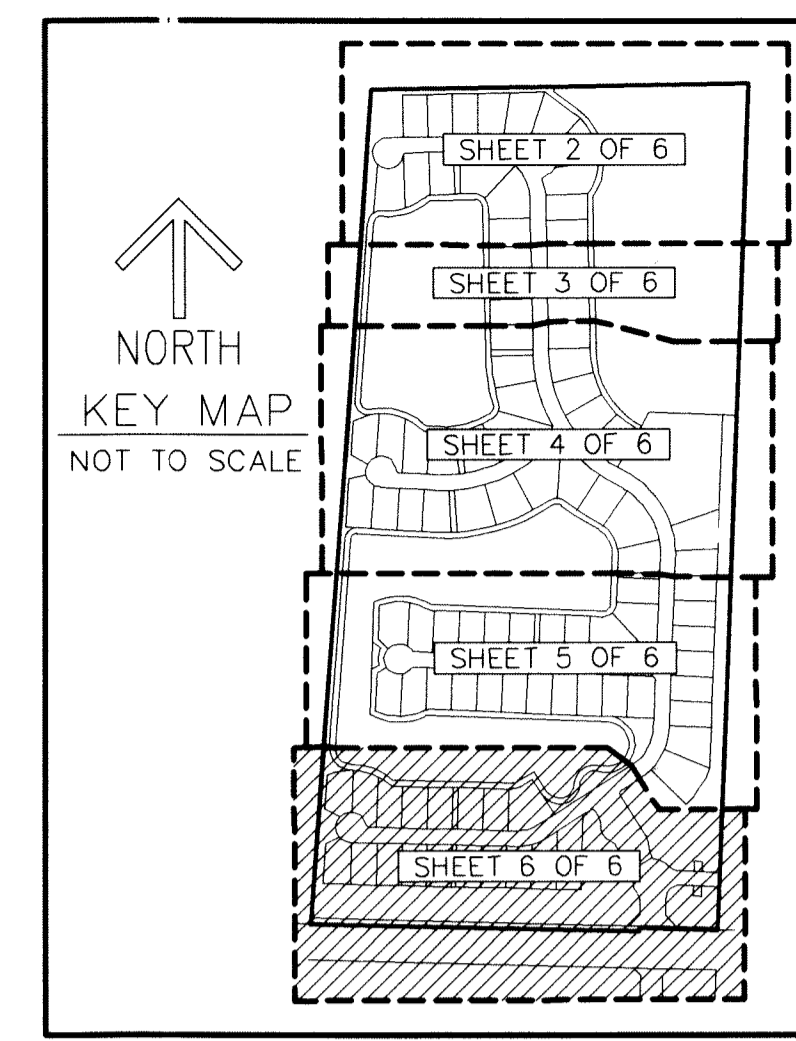
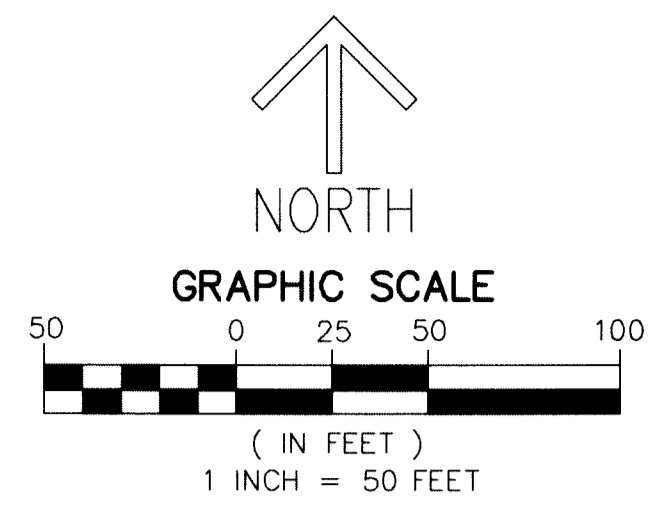
ANCIENT TREE

BEING A PORTION OF THE WEST ONE-HALF OF SECTION 14,
TOWNSHIP 42 SOUTH, RANGE 41 EAST,
CITY OF PALM BEACH GARDENS, PALM BEACH COUNTY, FLORIDA

THIS INSTRUMENT PREPARED BY
DAVID P. LINDLEY
OF
CAULFIELD and WHEELER, INC.
SURVEYORS - ENGINEERS - PLANNERS
7900 GLADES ROAD, SUITE 100
BOCA RATON, FLORIDA 33434 - (561)392-1991
CERTIFICATE OF AUTHORIZATION NO. LB3591
SEPTEMBER 2017

LEGEND/ABBREVIATIONS

- CL - CENTERLINE
- Δ - DELTA (CENTRAL ANGLE)
- AC - ACRES
- CB - CHORD BEARING
- CD - CHORD DISTANCE
- DE - DRAINAGE EASEMENT
- L - ARC LENGTH
- LAE - LIMITED ACCESS EASEMENT
- LB - LICENSED BUSINESS
- LBE - LANDSCAPE BUFFER EASEMENT
- LSE - LIFT STATION EASEMENT
- O.R.B. - OFFICIAL RECORD BOOK
- P.P.A.E. - PERPETUAL PUBLIC ACCESS EASEMENT
- R - RADIUS
- (R) - INDICATES RADIAL LINE
- SF - SQUARE FEET
- SUAE - SEACOAST UTILITY AUTHORITY EASEMENT
- UE - UTILITY EASEMENT
- PRM - DENOTES PERMANENT REFERENCE MONUMENT
4" x 4" x 24" CONCRETE MONUMENT WITH
ALUMINUM DISK STAMPED "C&W PRM LB3591"
- - DENOTES PERMANENT CONTROL POINT

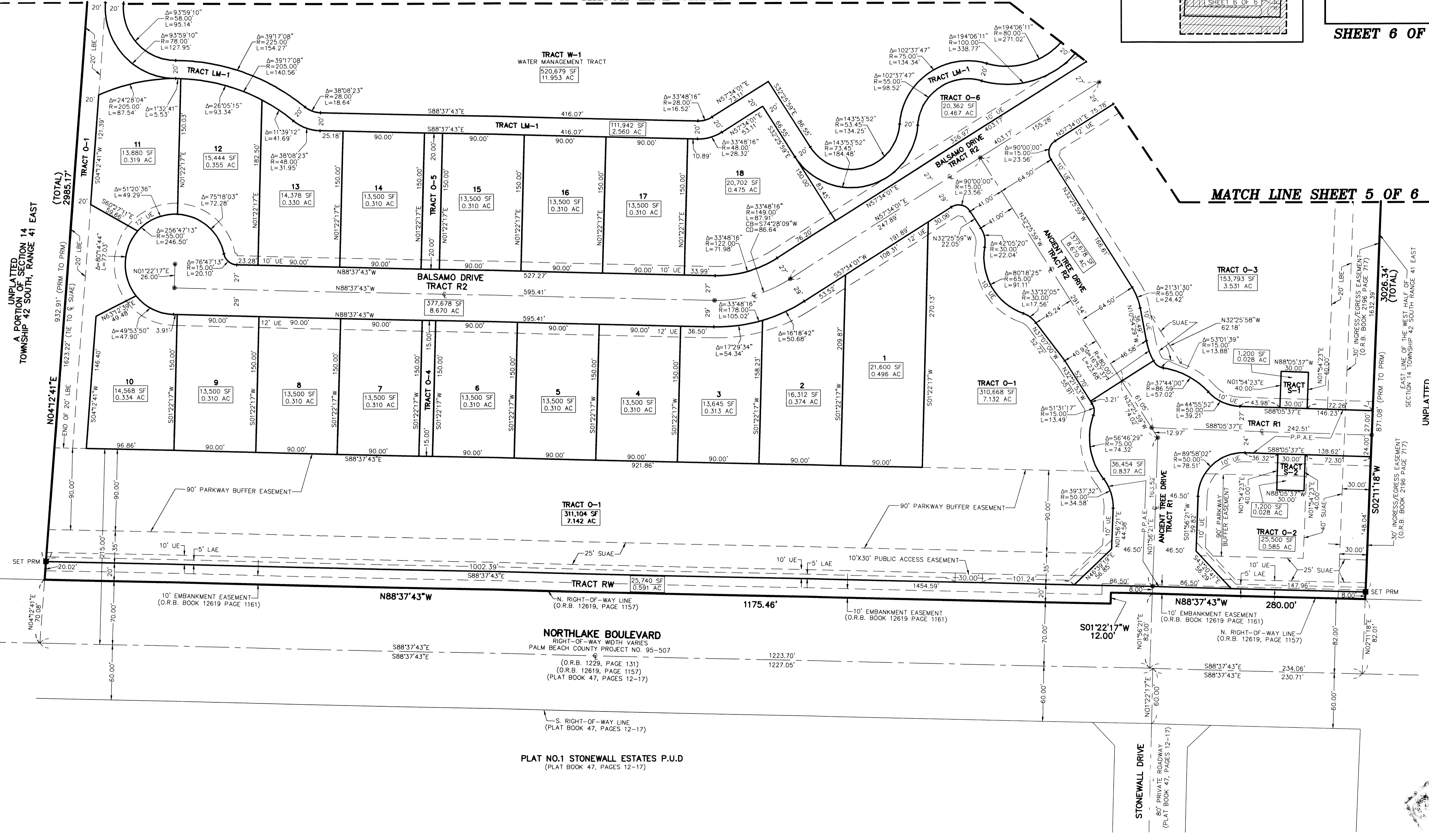


22

SHEET 6 OF 6

MATCH LINE SHEET 5 OF 6

MATCH LINE SHEET 5 OF 6



UNPLATTED
A PORTION OF SECTION 14
TOWNSHIP 42 SOUTH, RANGE 41 EAST

UNPLATTED
A PORTION OF SECTION 14
TOWNSHIP 42 SOUTH, RANGE 41 EAST

PLAT NO.1 STONEMALL ESTATES P.U.D.
(PLAT BOOK 47, PAGES 12-17)