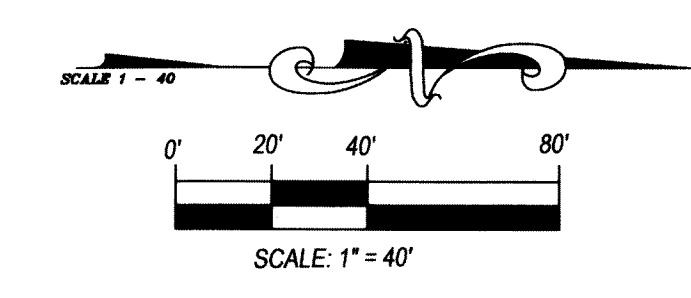


PALMS WEST INDUSTRIAL PARK MUPD REPLAT

BEING A REPLAT OF LOT 1; LOT 3; TRACT "R2"; AND THE WATER MANAGEMENT TRACT, PALMS WEST INDUSTRIAL PARK, A P.I.D., ACCORDING TO THE PLAT THEREOF, AS RECORDED IN PLAT BOOK 71, PAGES 75 THROUGH 77, OF THE PUBLIC RECORDS OF PALM BEACH COUNTY, FLORIDA, TOGETHER WITH A PORTION OF THAT 30 FOOT WIDE PALM BEACH FARMS COMPANY RIGHT-OF-WAY ABANDONED BY RESOLUTION NO. R-2001-1826, RECORDED IN OFFICIAL RECORDS BOOK 13070, PAGE 488, OF THE PUBLIC RECORDS OF PALM BEACH COUNTY, FLORIDA, ALL LYING AND BEING IN SECTION 32, TOWNSHIP 43 SOUTH, RANGE 42 EAST, PALM BEACH COUNTY, FLORIDA

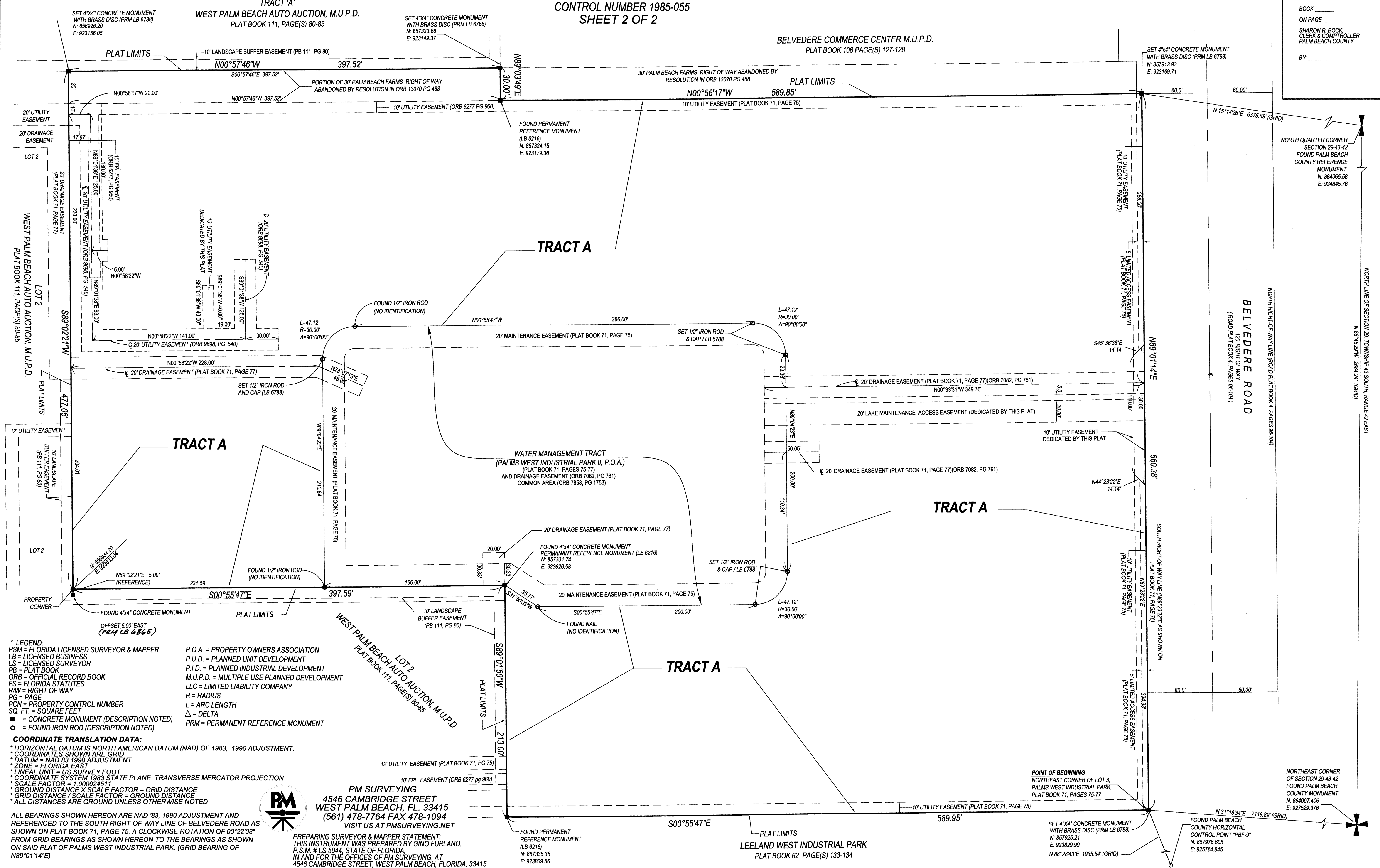


STATE OF FLORIDA
COUNTY OF PALM BEACH
THIS PLAT HAS BEEN FILED FOR
RECORD AT _____
THIS _____ DAY OF _____, 201____
AND DULY RECORDED IN PLAT
BOOK _____
ON PAGE _____
SHARON R. BOCK
CLERK & COMPTROLLER
PALM BEACH COUNTY
BY: _____

TRACT 'A'
WEST PALM BEACH AUTO AUCTION, M.U.P.D.
PLAT BOOK 111, PAGE(S) 80-85

CONTROL NUMBER 1985-055
SHEET 2 OF 2

BELVEDERE COMMERCE CENTER M.U.P.D.
PLAT BOOK 106 PAGE(S) 127-128



*** LEGEND:**
PSM = FLORIDA LICENSED SURVEYOR & MAPPER
LB = LICENSED BUSINESS
LS = LICENSED SURVEYOR
PB = PLAT BOOK
ORB = OFFICIAL RECORD BOOK
FS = FLORIDA STATUTES
R/W = RIGHT OF WAY
PG = PAGE
PCN = PROPERTY CONTROL NUMBER
SQ. FT. = SQUARE FEET
■ = CONCRETE MONUMENT (DESCRIPTION NOTED)
○ = FOUND IRON ROD (DESCRIPTION NOTED)
P.O.A. = PROPERTY OWNERS ASSOCIATION
P.U.D. = PLANNED UNIT DEVELOPMENT
P.I.D. = PLANNED INDUSTRIAL DEVELOPMENT
M.U.P.D. = MULTIPLE USE PLANNED DEVELOPMENT
LLC = LIMITED LIABILITY COMPANY
R = RADIUS
L = ARC LENGTH
Δ = DELTA
PRM = PERMANENT REFERENCE MONUMENT

COORDINATE TRANSLATION DATA:
* HORIZONTAL DATUM IS NORTH AMERICAN DATUM (NAD) OF 1983, 1990 ADJUSTMENT.
* COORDINATES SHOWN ARE GRID
* DATUM = NAD 83 1990 ADJUSTMENT
* ZONE = FLORIDA EAST
* LINEAL UNIT = US SURVEY FOOT
* COORDINATE SYSTEM 1983 STATE PLANE TRANSVERSE MERCATOR PROJECTION
* SCALE FACTOR = 1.00024611
* GROUND DISTANCE X SCALE FACTOR = GRID DISTANCE
* GRID DISTANCE / SCALE FACTOR = GROUND DISTANCE
* ALL DISTANCES ARE GROUND UNLESS OTHERWISE NOTED

ALL BEARINGS SHOWN HEREON ARE NAD '83, 1990 ADJUSTMENT AND REFERENCED TO THE SOUTH RIGHT-OF-WAY LINE OF BELVEDERE ROAD AS SHOWN ON PLAT BOOK 71, PAGE 75. A CLOCKWISE ROTATION OF 00°22'08" FROM GRID BEARINGS AS SHOWN HEREON TO THE BEARINGS AS SHOWN ON SAID PLAT OF PALMS WEST INDUSTRIAL PARK. (GRID BEARING OF N89°01'14"E)



PM SURVEYING
4546 CAMBRIDGE STREET
WEST PALM BEACH, FL. 33415
(561) 478-7764 FAX 478-1094
VISIT US AT PMSURVEYING.NET

PREPARING SURVEYOR & MAPPER STATEMENT:
THIS INSTRUMENT WAS PREPARED BY GINO FURLANO,
P.S.M. # 15 5044, STATE OF FLORIDA
IN AND FOR THE OFFICES OF PM SURVEYING, AT
4546 CAMBRIDGE STREET, WEST PALM BEACH, FLORIDA, 33415.

NORTH LINE OF SECTION 29, TOWNSHIP 43 SOUTH, RANGE 42 EAST
N 88°42'29"W 284.24' (GRID)

NORTH QUARTER CORNER
SECTION 29-43-42
COUNTY PALM BEACH
FOUND PALM BEACH
COUNTY REFERENCE
MONUMENT.
N: 864065.58
E: 924845.76

NORTH RIGHT-OF-WAY LINE (ROAD PLAT BOOK 4, PAGES 96-104)

BELVEDERE ROAD
(ROAD PLAT BOOK 4, PAGES 96-104)

NORTHEAST CORNER
OF SECTION 29-43-42
FOUND PALM BEACH
COUNTY MONUMENT
N: 86407.406
E: 927526.376

POINT OF BEGINNING
NORTHEAST CORNER OF LOT 3,
PALMS WEST INDUSTRIAL PARK,
PLAT BOOK 71, PAGES 75-77

FOUND PALM BEACH
COUNTY HORIZONTAL
CONTROL POINT "PBF-9"
N: 857976.606
E: 925764.845