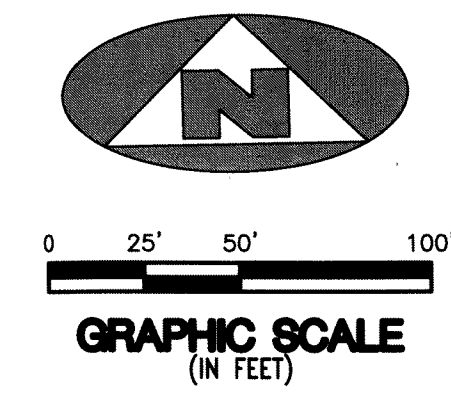
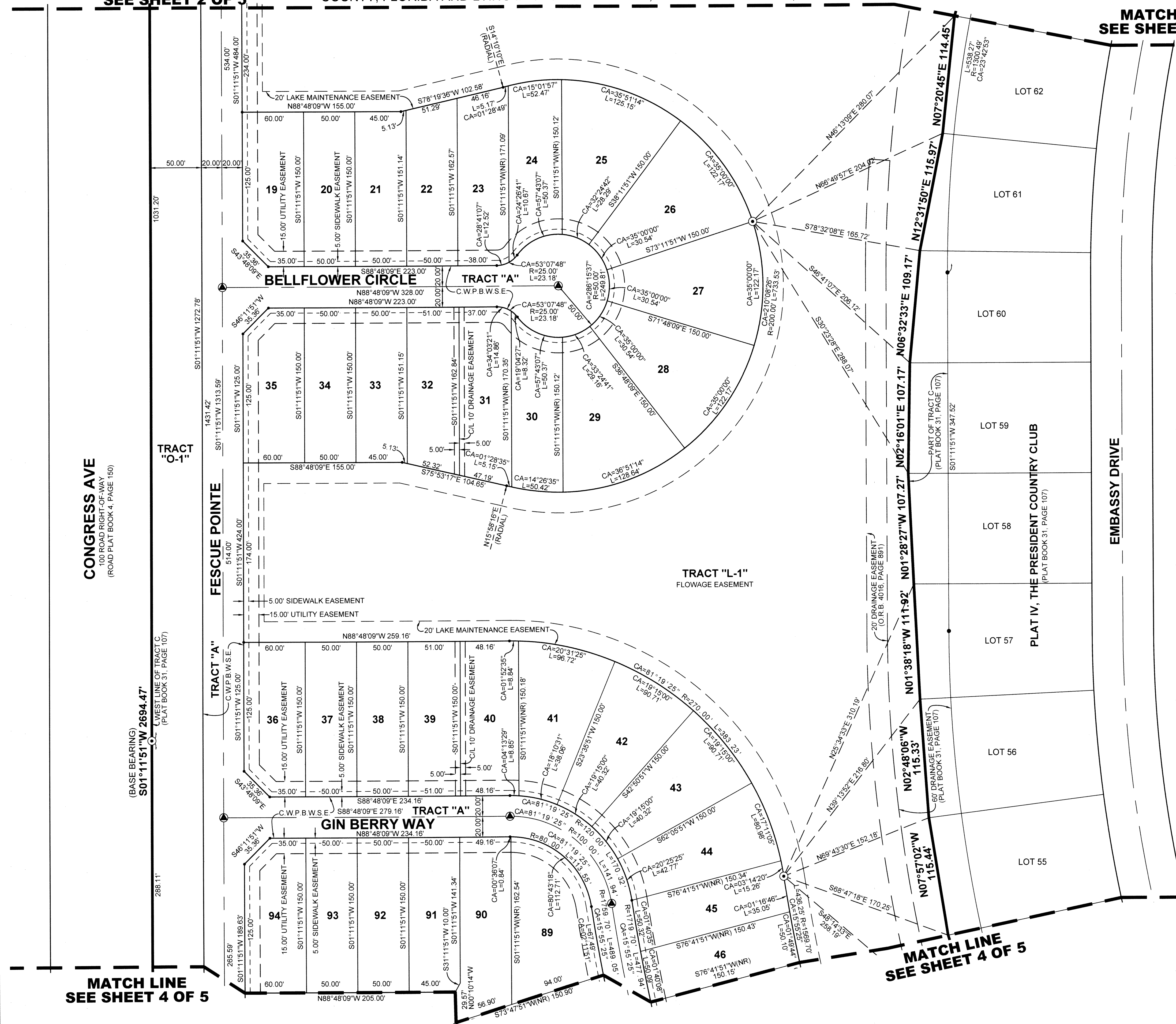


184

BEING A REPLAT OF A PORTION OF TRACT C, PLAT IV THE PRESIDENT COUNTRY CLUB, AS RECORDED IN PLAT BOOK 31, PAGE 107, PUBLIC RECORDS, PALM BEACH COUNTY, FLORIDA AND LYING IN SECTIONS 7 AND 8, TOWNSHIP 43 SOUTH, RANGE 43 EAST, CITY OF WEST PALM BEACH, PALM BEACH COUNTY, FLORIDA

MATCH LINE SEE SHEET 2 OF 5

MATCH LINE SEE SHEET 2 OF 5

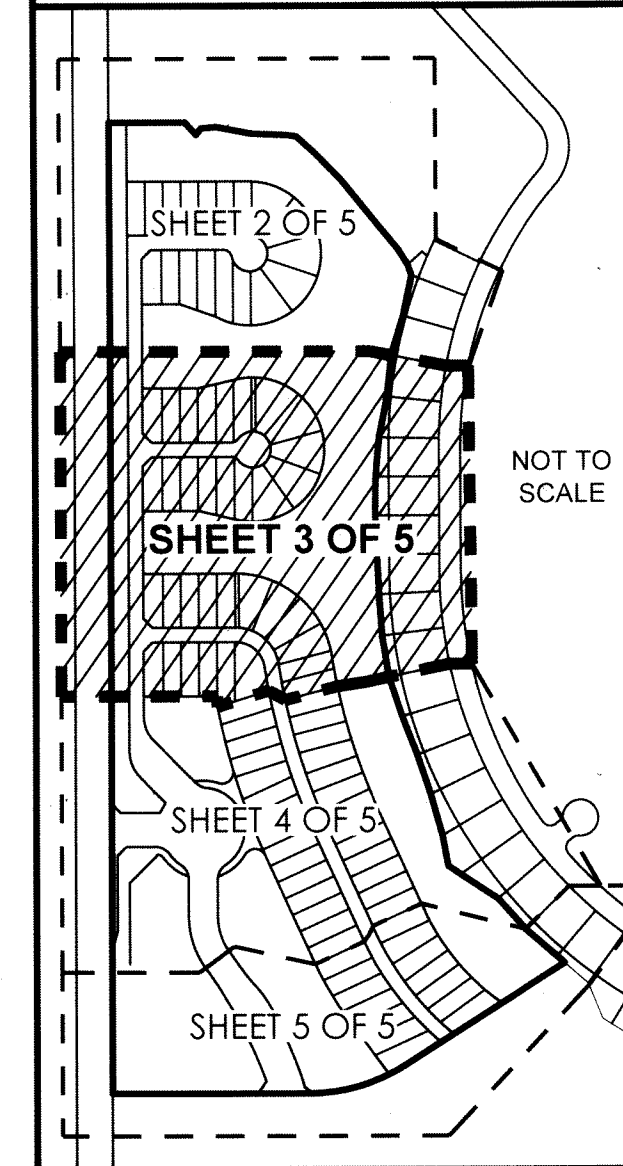


CONGRESS AVE
100 ROAD RIGHT-OF-WAY
(ROAD PLAT BOOK 4, PAGE 190)

MATCH LINE SEE SHEET 4 OF 5

MATCH LINE SEE SHEET 4 OF 5

SHEET INDEX

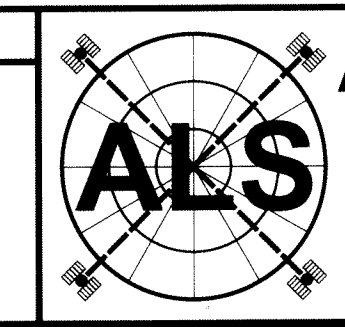


LEGEND

- Denotes a set permanent reference monument iron rod and cap stamped "PRM LB 7344"
Denotes a set permanent reference monument nail and washer stamped "PRM LB 7344"
Denotes a set permanent control point nail and washer stamped "PCP LB 7344"
Denotes central angle
Denotes a city of West Palm Beach water and sewer easement
Denotes arc length distance
Denotes long chord bearing
Denotes a non radial line
Denotes radius distance

SURVEYOR'S NOTES

- 1. THE BEARING BASIS (BASE BEARING), AS SHOWN HEREON, IS BASED ON THE PLATTED BEARING OF SOUTH 01°11'51" WEST, ALONG THE WEST LINE OF TRACT "C", PLAT IV THE PRESIDENT COUNTRY CLUB, PLAT BOOK 31, PAGE 107, AS SHOWN HEREON, AND ALL OTHER BEARINGS ARE RELATIVE THERE TO.
2. IN THOSE INSTANCES WHERE UTILITY OR DRAINAGE STRUCTURES ARE CONSTRUCTED IN CONFLICT WITH THE PLATTED PERMANENT CONTROL POINT POSITION STRADDLERS MONUMENTED AS PERMANENT CONTROL POINTS WILL BE SET TO REFERENCE THE PLATTED POSITION.
3. LINES THAT INTERSECT CURVES ARE RADIAL, UNLESS OTHERWISE NOTED.
4. THIS INSTRUMENT WAS PREPARED BY STEPHEN L. SHIRLEY, PROFESSIONAL SURVEYOR AND MAPPER NO. 3918, IN AND FOR THE OFFICES OF ASSOCIATED LAND SURVEYORS, INC., 4152 WEST BLUE HERON BOULEVARD, SUITE 121, RIVIERA BEACH, FLORIDA, 33404



ASSOCIATED LAND SURVEYORS, INC.
4152 W. BLUE HERON BLVD. SUITE 121
RIVIERA BEACH, FLORIDA 33404
PHONE: (561) 848-2102 FAX: (561) 844-9659
LB NO. 7344 EMAIL: als@alssurvey.net

Table with 2 columns: SCALE (1"=50'), DWN (BLS) and WO NO. (11-1012), SHEET (3 OF 5)