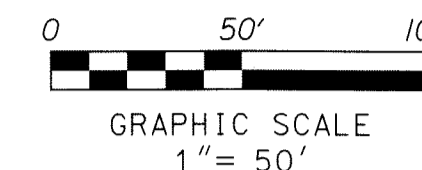
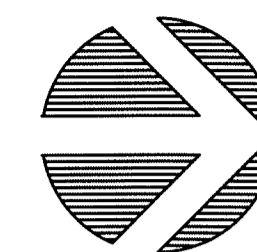


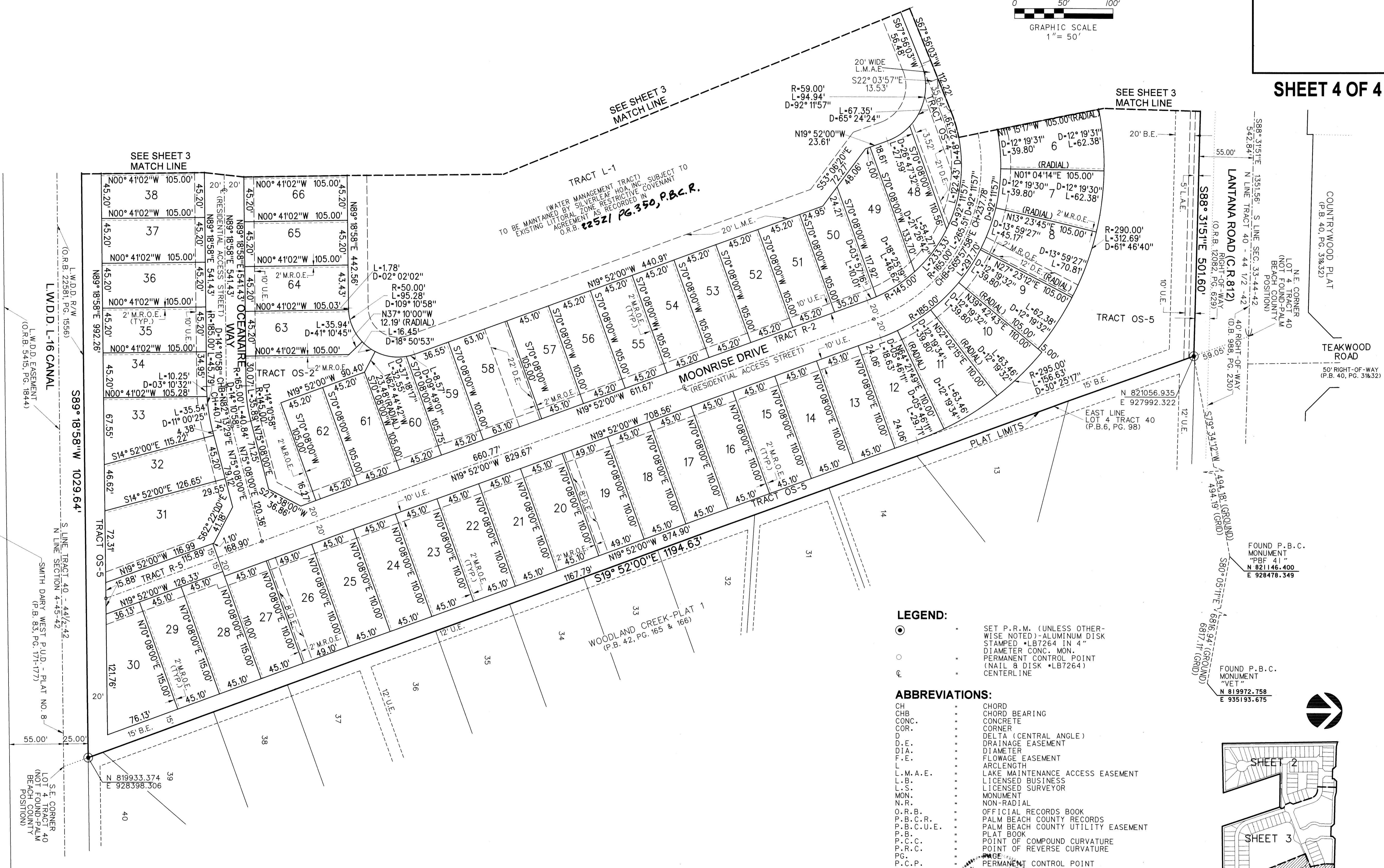
LANTANA FARMS P.U.D.

A REPLAT OF PORTIONS OF LOT 1, TRACT 41 & LOT 4, TRACT 40
 "PALM BEACH FARMS COMPANY PLAT NO. 13" (P.B. 6, PGS. 98-99, P.B.C.R.),
 AND A REPLAT OF TRACT A, "LANTANA FARMS M.U.P.D.", (P.B. 112, PGS. 10&11, P.B.C.R.)
 HIATUS BETWEEN TOWNSHIP 44 & 45 SOUTH, RANGE 42 EAST, PALM BEACH COUNTY, FLORIDA.

163



SHEET 4 OF 4

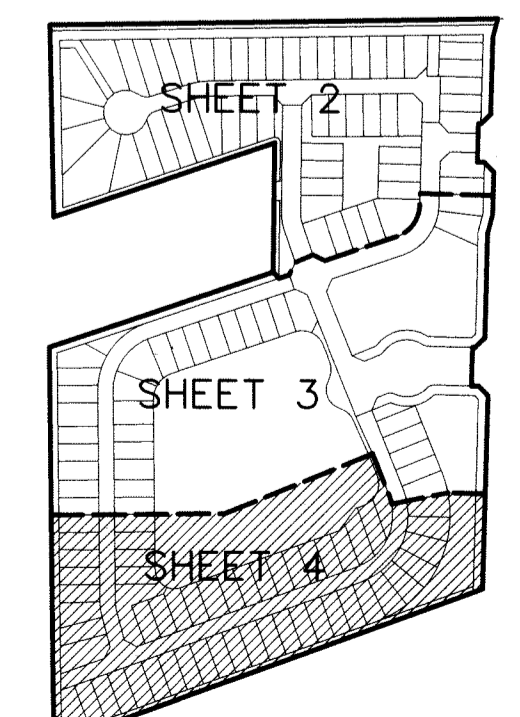


LEGEND:

- SET P.R.M. (UNLESS OTHERWISE NOTED)-ALUMINUM DISK
- STAMPED "LB7264" IN 4" DIAMETER CONC. MON.
- PERMANENT CONTROL POINT (NAIL & DISK "LB7264")
- CENTERLINE

ABBREVIATIONS:

- CH CHORD
- CHB CHORD BEARING
- CONC. CONCRETE
- COR. CORNER
- D DELTA (CENTRAL ANGLE)
- D.E. DRAINAGE EASEMENT
- DIA. DIAMETER
- F.E. FLOWAGE EASEMENT
- L ARCLength
- L.M.A.E. LAKE MAINTENANCE ACCESS EASEMENT
- L.B. LICENSED BUSINESS
- L.S. LICENSED SURVEYOR
- MON. MONUMENT
- N.R. NON-RADIAL
- O.R.B. OFFICIAL RECORDS BOOK
- P.B.C.R. PALM BEACH COUNTY RECORDS
- P.B.C.U.E. PALM BEACH COUNTY UTILITY EASEMENT
- P.B. PLAT BOOK
- P.C.C. POINT OF COMPOUND CURVATURE
- P.R.C. POINT OF REVERSE CURVATURE
- PG. PAGE
- P.C.P. PERMANENT CONTROL POINT
- P.O.B. POINT OF BEGINNING
- P.O.C. POINT OF COMMENCEMENT
- P.R.M. PERMANENT REFERENCE MONUMENT
- P.S.M. PROFESSIONAL SURVEYOR & MAPPER
- R RADIUS
- R/W RIGHT-OF-WAY
- SEC. SECTION
- SF SQUARE FEET
- U.E. UTILITY EASEMENT
- B.E. DRAINAGE EASEMENT
- M.R.O.E. MAINTENANCE & ROOF OVERHANG EASEMENT



KEY MAP NOT TO SCALE