

THIS INSTRUMENT PREPARED BY
 DAVID P. LINDLEY
 OF
CAULFIELD and WHEELER, INC.
 SURVEYORS - ENGINEERS - PLANNERS
 7900 GLADES ROAD, SUITE 100
 BOCA RATON, FLORIDA 33434
 OFFICE (561)392-1991 FAX (561)750-1452
 CERTIFICATE OF AUTHORIZATION NO. LB 3591
 JULY - 2017

CRESTWOOD NORTH

BEING REPLAT OF A PORTION OF TRACT B, PLAT OF SECTION 15, NORTHEAST QUARTER ACCORDING TO THE PLAT THEREOF, AS RECORDED IN PLAT BOOK 107, PAGES 173 AND 174 AND ALL OF TRACTS C AND D, PLAT OF SARATOGA AT ROYAL PALM PLAT I, ACCORDING TO THE PLAT THEREOF AS RECORDED IN PLAT BOOK 61, PAGES 66 THROUGH 74, ALL OF THE PUBLIC RECORDS OF PALM BEACH COUNTY, FLORIDA, LYING IN SECTION 15, TOWNSHIP 43 SOUTH, RANGE 41 EAST, VILLAGE OF ROYAL PALM BEACH, PALM BEACH COUNTY, FLORIDA

91

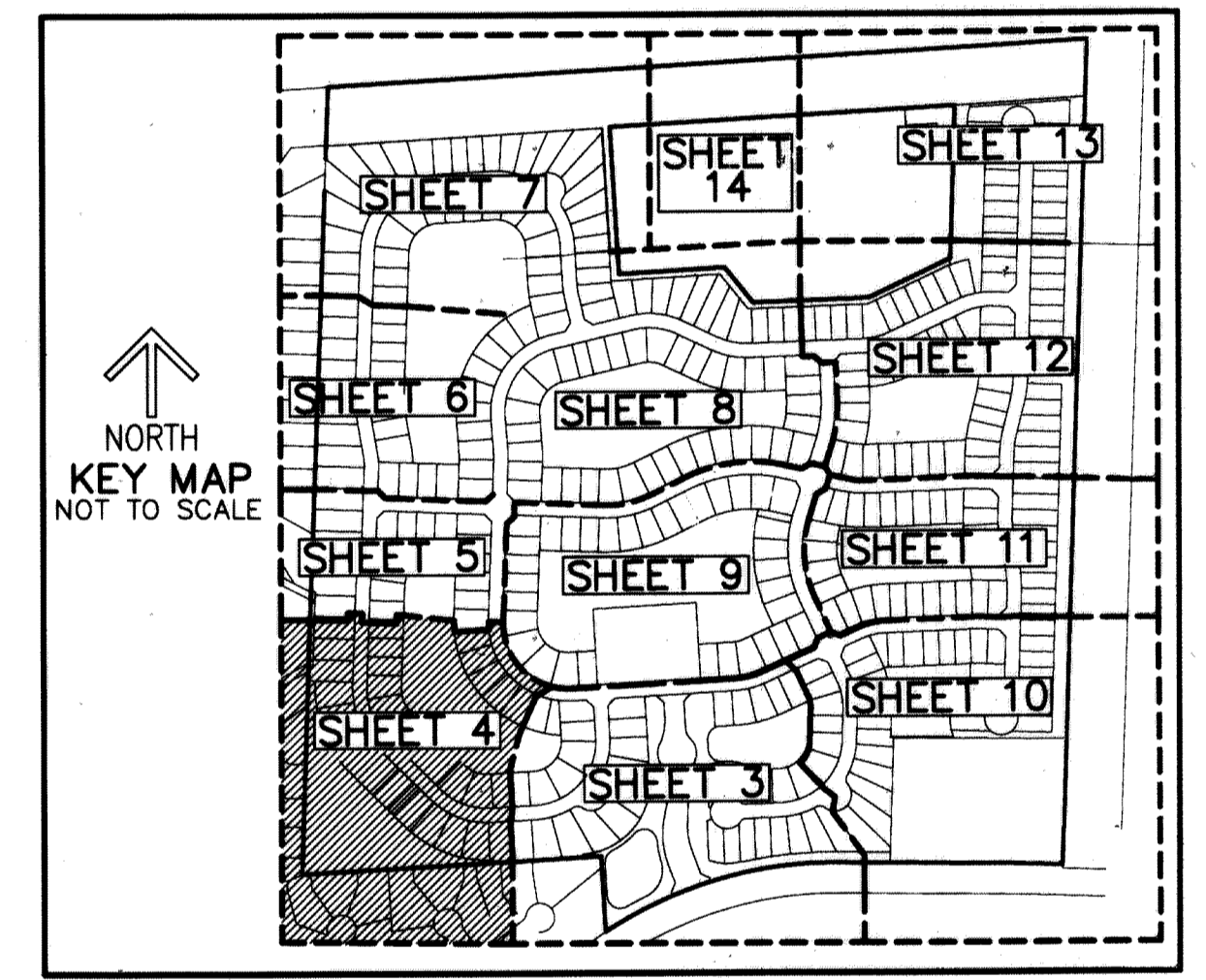
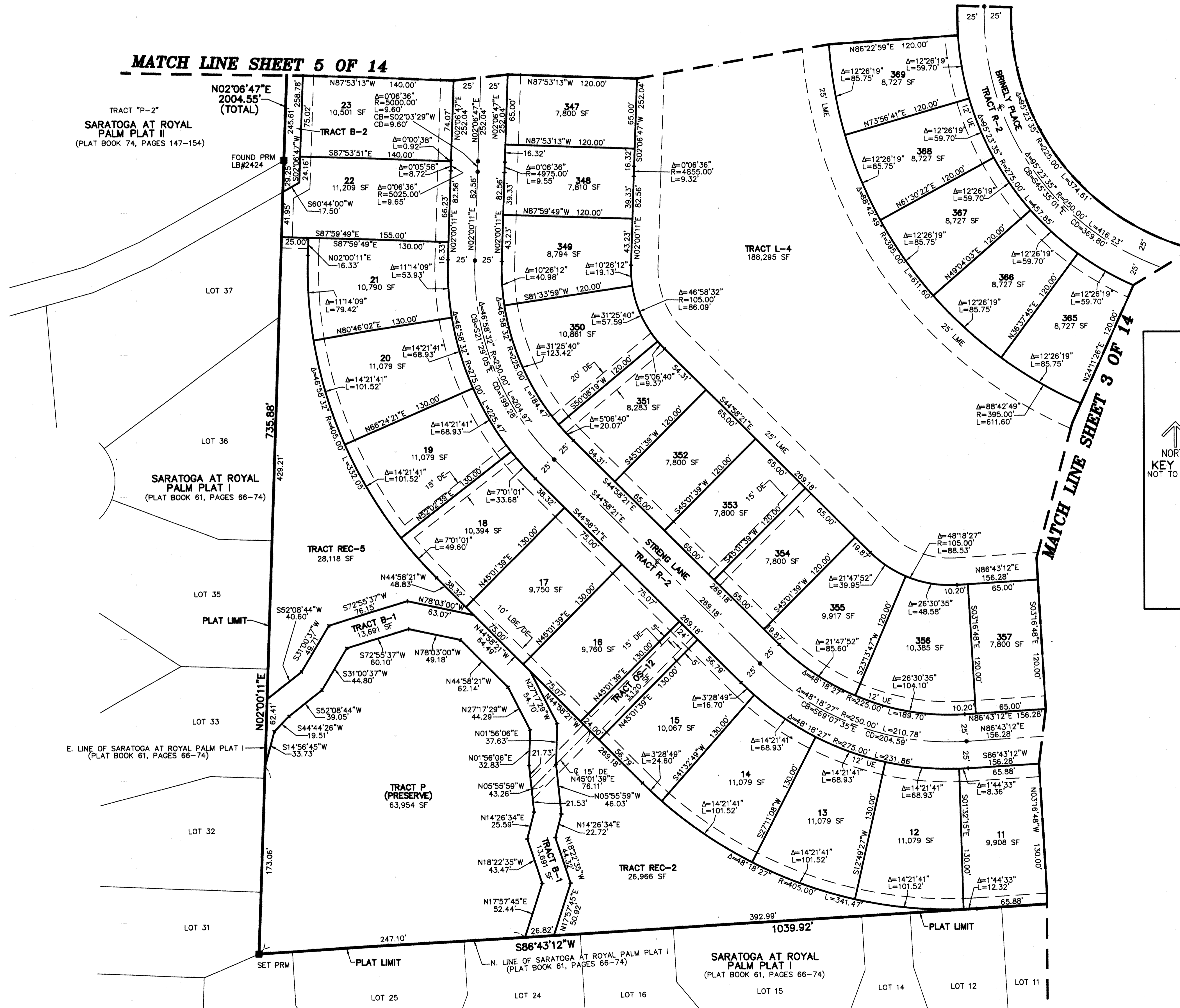
STATE OF FLORIDA
 COUNTY OF PALM BEACH
 THIS PLAT WAS FILED FOR
 RECORD AT _____ M.
 THIS _____ DAY OF _____
 A.D. 201____ AND DULY RECORDED
 IN PLAT BOOK _____ ON
 PAGES _____ AND _____

SHARON R. BOCK
 CLERK AND COMPTROLLER

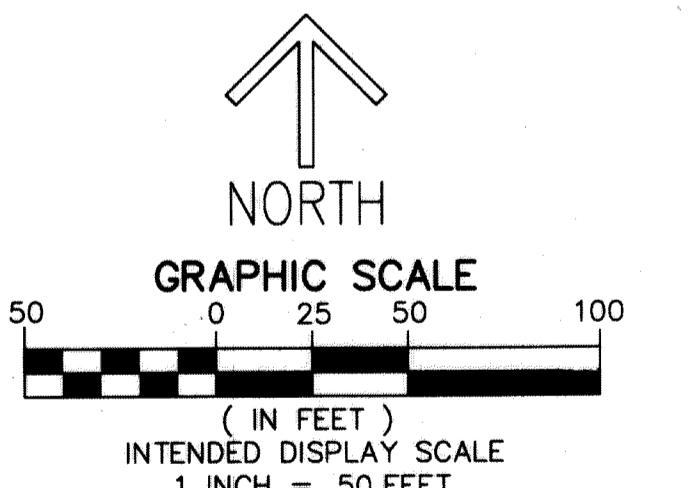
BY: _____
 DEPUTY CLERK

SHEET 4 OF 14

MATCH LINE SHEET 5 OF 14



NORTH
 KEY MAP
 NOT TO SCALE



- LEGEND/ABBREVIATIONS**
- CL - CENTERLINE
 - Δ - DELTA (CENTRAL ANGLE)
 - BDE - BUFFER DRAINAGE EASEMENT
 - CB - CHORD BEARING
 - CD - CHORD DISTANCE
 - DE - DRAINAGE EASEMENT
 - FPL - FLORIDA POWER & LIGHT CO.
 - ARC - ARC LENGTH
 - LAE - LIMITED ACCESS EASEMENT
 - LB - LICENSED BUSINESS
 - LMAE - LAKE MAINTENANCE ACCESS EASEMENT
 - LME - LAKE MAINTENANCE EASEMENT
 - LSE - LIFT STATION EASEMENT
 - LBE - LANDSCAPE BUFFER EASEMENT
 - OHME - OVERHANG MAINTENANCE EASEMENT
 - O.R.B. - OFFICIAL RECORD BOOK
 - R - RADIUS
 - SF - SQUARE FEET
 - UE - UTILITY EASEMENT
 - PRM - DENOTES PERMANENT REFERENCE MONUMENT
 - 4" x 4" x 24" CONCRETE MONUMENT WITH ALUMINUM DISK STAMPED "C&W PRM LB3591"
 - PCP - DENOTES PERMANENT CONTROL POINT
 - OHME - OVERHANG/MAINTENANCE EASEMENT
 - INDICATES "ZERO" SIDE OF LOT LINE
 - PBCUE - PALM BEACH COUNTY UTILITY EASEMENT
 - (NR) - NON RADIAL LINE