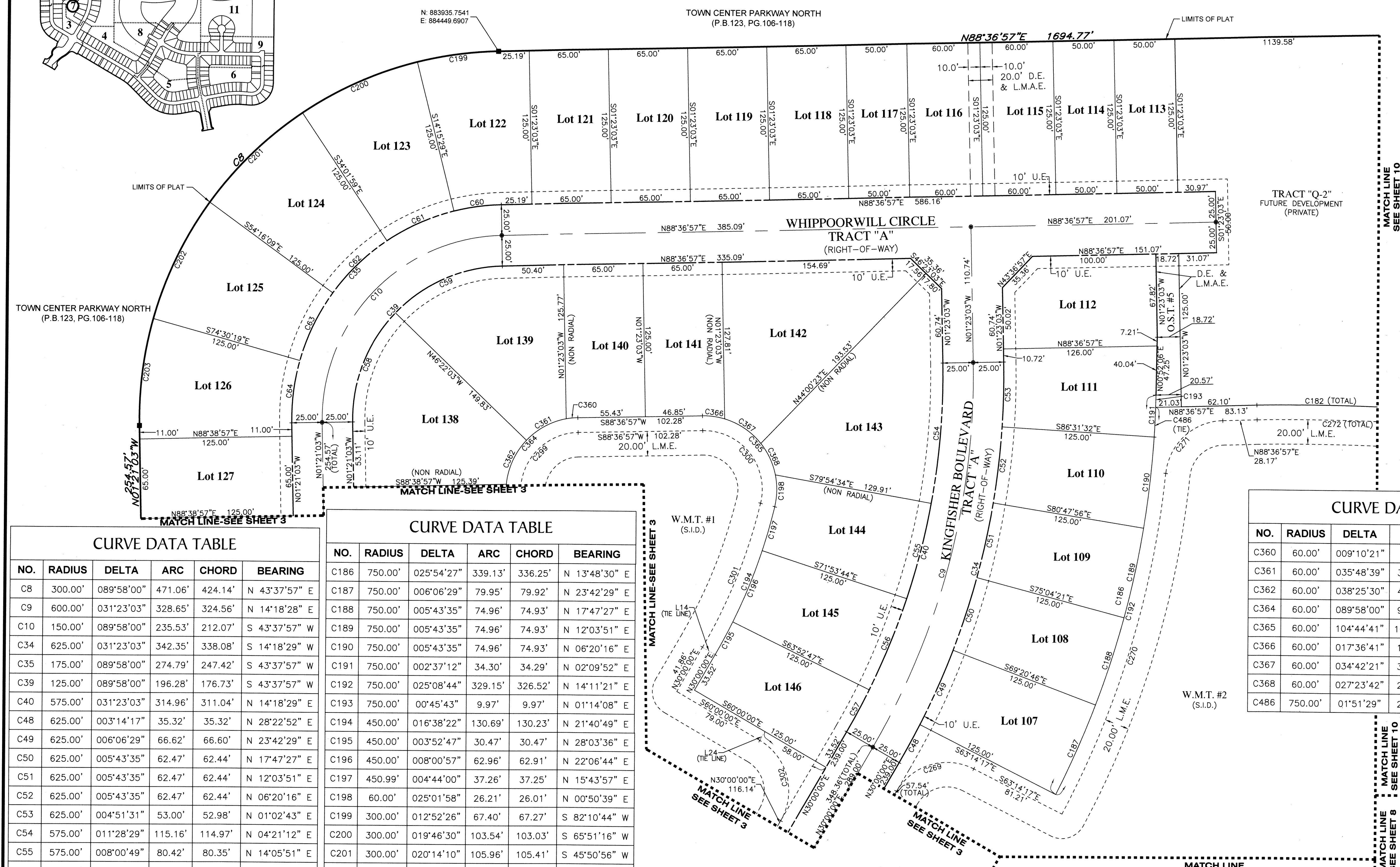
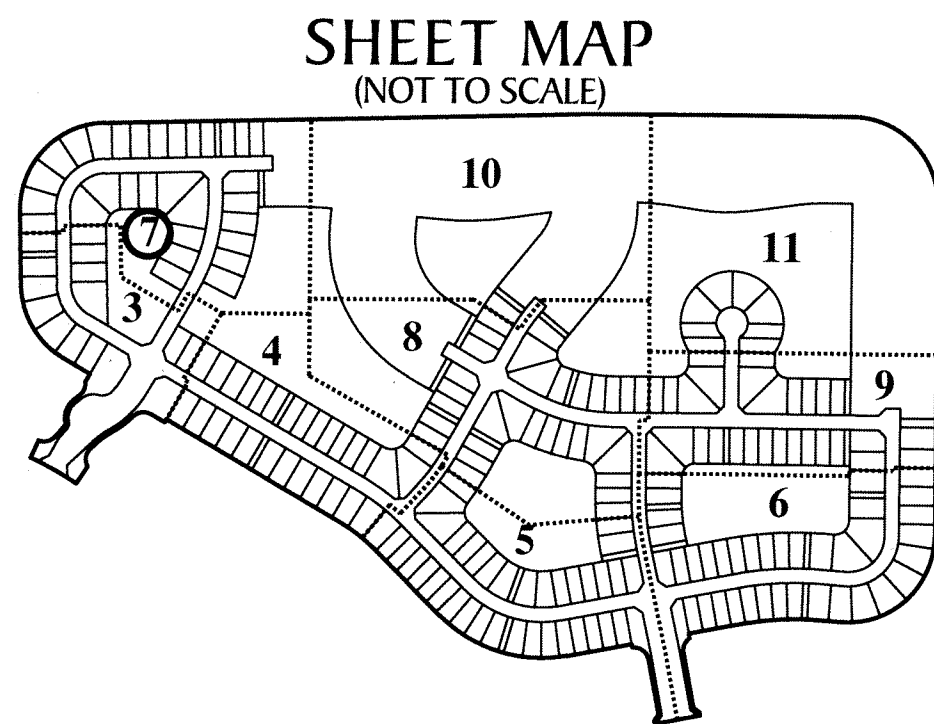


HAMMOCKS OF WESTLAKE

BEING A REPLAT OF TRACT "Q" OF TOWN CENTER PARKWAY NORTH PER PLAT BOOK 123, PAGE 106-118, BEING A PORTION OF SECTION 6, TOWNSHIP 43 SOUTH, RANGE 41 EAST, AND A PORTION OF SECTION 1, TOWNSHIP 43 SOUTH, RANGE 40 EAST, CITY OF WESTLAKE, PALM BEACH COUNTY, FLORIDA



NO.	RADIUS	DELTA	ARC	CHORD	BEARING
C8	300.00'	089°58'00"	471.06'	424.14'	N 43°37'57" E
C9	600.00'	031°23'03"	328.65'	324.56'	N 14°18'28" E
C10	150.00'	089°58'00"	235.53'	212.07'	S 43°37'57" W
C34	625.00'	031°23'03"	342.35'	338.08'	S 14°18'29" W
C35	175.00'	089°58'00"	274.79'	247.42'	S 43°37'57" W
C39	125.00'	089°58'00"	196.28'	176.73'	S 43°37'57" W
C40	575.00'	031°23'03"	314.96'	311.04'	N 14°18'29" E
C48	625.00'	003°14'17"	35.32'	35.32'	N 28°22'52" E
C49	625.00'	006°06'29"	66.62'	66.60'	N 23°42'29" E
C50	625.00'	005°43'35"	62.47'	62.44'	N 17°47'27" E
C51	625.00'	005°43'35"	62.47'	62.44'	N 12°03'51" E
C52	625.00'	005°43'35"	62.47'	62.44'	N 06°20'16" E
C53	625.00'	004°51'31"	53.00'	52.98'	N 01°02'43" E
C54	575.00'	011°28'29"	115.16'	114.97'	N 04°21'12" E
C55	575.00'	008°00'49"	80.42'	80.35'	N 14°05'51" E
C56	575.00'	008°00'57"	80.44'	80.38'	N 22°06'44" E
C57	575.00'	003°52'47"	38.94'	38.93'	N 28°03'36" E
C58	125.00'	044°59'00"	98.14'	95.64'	S 21°08'27" W
C59	125.00'	044°59'00"	98.14'	95.64'	S 66°07'27" W
C60	175.00'	012°52'26"	39.32'	39.24'	S 82°10'44" W
C61	175.00'	019°46'30"	60.40'	60.10'	S 65°51'16" W
C62	175.00'	020°14'10"	61.81'	61.49'	S 45°50'56" W
C63	175.00'	020°14'10"	61.81'	61.49'	S 25°36'46" W
C64	175.00'	016°50'44"	51.45'	51.27'	S 07°04'19" W
C182	1700.00'	005°48'43"	172.44'	172.37'	S 88°28'42" E

NO.	RADIUS	DELTA	ARC	CHORD	BEARING
C186	750.00'	025°54'27"	339.13'	336.25'	N 13°48'30" E
C187	750.00'	006°06'29"	79.95'	79.92'	N 23°42'29" E
C188	750.00'	005°43'35"	74.96'	74.93'	N 17°47'27" E
C189	750.00'	005°43'35"	74.96'	74.93'	N 12°03'51" E
C190	750.00'	005°43'35"	74.96'	74.93'	N 06°20'16" E
C191	750.00'	002°37'12"	34.30'	34.29'	N 02°09'52" E
C192	750.00'	025°08'44"	329.15'	326.52'	N 14°11'21" E
C193	750.00'	00°45'43"	9.97'	9.97'	N 01°14'08" E
C194	450.00'	016°38'22"	130.69'	130.23'	N 21°40'49" E
C195	450.00'	003°52'47"	30.47'	30.47'	N 28°03'36" E
C196	450.00'	008°00'57"	62.96'	62.91'	N 22°06'44" E
C197	450.99'	004°44'00"	37.26'	37.25'	N 15°43'57" E
C198	60.00'	025°01'58"	26.21'	26.01'	N 00°50'39" E
C199	300.00'	012°52'26"	67.40'	67.27'	S 82°10'44" W
C200	300.00'	019°46'30"	103.54'	103.03'	S 65°51'16" W
C201	300.00'	020°14'10"	105.96'	105.41'	S 45°50'56" W
C202	300.00'	020°14'10"	105.96'	105.41'	S 25°36'46" W
C203	300.00'	016°50'44"	88.20'	87.89'	S 07°04'19" W
C269	48.00'	086°45'43"	72.69'	65.94'	S 73°22'52" W
C270	762.00'	022°00'34"	292.71'	290.92'	S 16°39'34" W
C271	48.00'	082°57'40"	69.50'	63.59'	S 47°08'07" W
C272	1688.00'	003°40'47"	108.41'	108.39'	N 89°32'39" W
C299	48.00'	089°58'00"	75.37'	67.86'	S 43°37'57" W
C300	48.00'	104°44'41"	87.75'	76.03'	N 39°00'42" W
C301	438.00'	016°38'22"	127.20'	126.75'	N 21°40'49" E
C302	48.00'	090°00'00"	75.40'	67.88'	N 15°00'00" W

NO.	BEARING	LENGTH
L14	N 60°00'00" W	12.00'
L24	S 30°00'00" W	8.34'

NO.	RADIUS	DELTA	ARC	CHORD	BEARING
C360	60.00'	009°10'21"	9.61'	9.60'	S 84°01'47" W
C361	60.00'	035°48'39"	37.50'	36.89'	S 61°32'17" W
C362	60.00'	038°25'30"	40.24'	39.49'	S 24°25'12" W
C364	60.00'	089°58'00"	94.21'	84.83'	S 43°37'57" W
C365	60.00'	104°44'41"	109.69'	95.04'	N 39°00'42" W
C366	60.00'	017°36'41"	18.45'	18.37'	N 82°34'43" W
C367	60.00'	034°42'21"	36.34'	35.79'	N 56°25'12" W
C368	60.00'	027°23'42"	28.69'	28.42'	N 25°22'10" W
C486	750.00'	01°51'29"	24.32'	24.32'	N 02°32'44" E

LEGEND:
 ■ --- Indicates (P.R.M.) Permanent Reference Monument - 4"x4" Concrete Monument LB7768, unless otherwise noted.
 ⊕ --- Indicates (P.R.M.) Offset Permanent Reference Monument - 4"x4" Concrete Monument LB7768, unless otherwise noted.
 ● --- Indicates (P.C.P.) Permanent Control Point LB7768
 P.B.C. --- Palm Beach County
 P.B. --- Plat Book
 FCM --- Found Concrete Monument
 O.R. --- Official Records Book
 (TYP) --- Typical
 (RB) --- Radial Bearing
 (NR) --- Non-Radial line
 (PR) --- Private Road
 (U.E.) --- Utility Easement
 (D.E.) --- Drainage Easement
 C --- Curve
 L --- Line
 B.T. --- Buffer Tract
 O.S.T. --- Open Space Tract
 W.M.T. --- Water Management Tract
 L.M.E. --- Lake Maintenance Easement
 L.M.A.E. --- Lake Maintenance Access Easement
 L.A.E. --- Limited Access Easement
 PG. --- Page
 R.T. --- Recreation Tract
 S.I.D. --- Seminole Improvement District
 NAD --- North American Datum
 LB --- Licensed Business
 P.S.M. --- Professional Surveyor and Mapper
 1/4 --- One Quarter

R --- RADIUS
 L --- ARC LENGTH
 D --- DELTA-CENTRAL ANGLE

GeoPoint
 Surveying, Inc.
 4152 W. Blue Heron Blvd. Phone: (561) 444-2720
 Suite 105 www.geopointsurvey.com
 Riviera Beach, FL 33404 Licensed Business Number LB 7768
SHEET 7 OF 11 SHEETS

