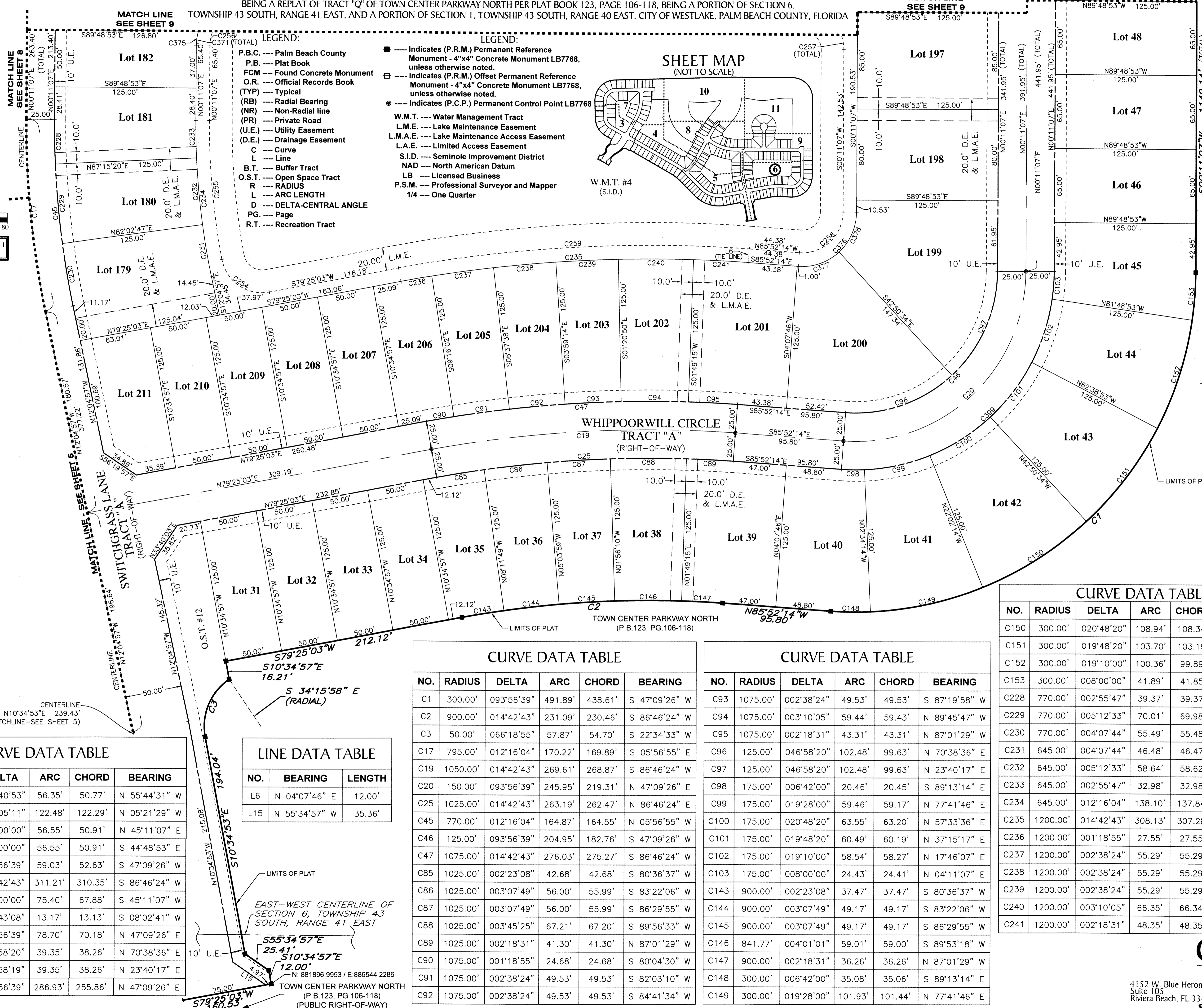
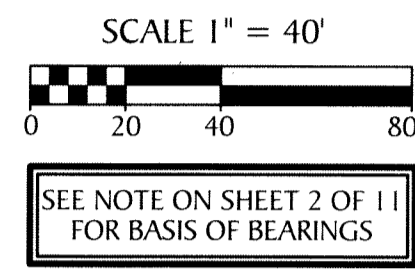
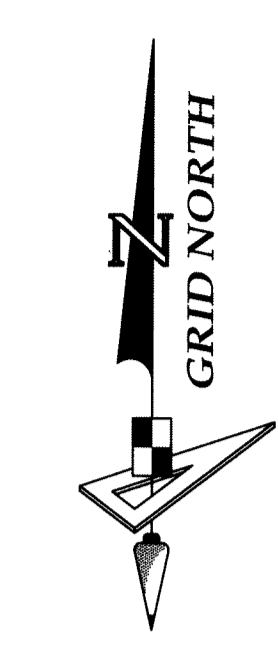


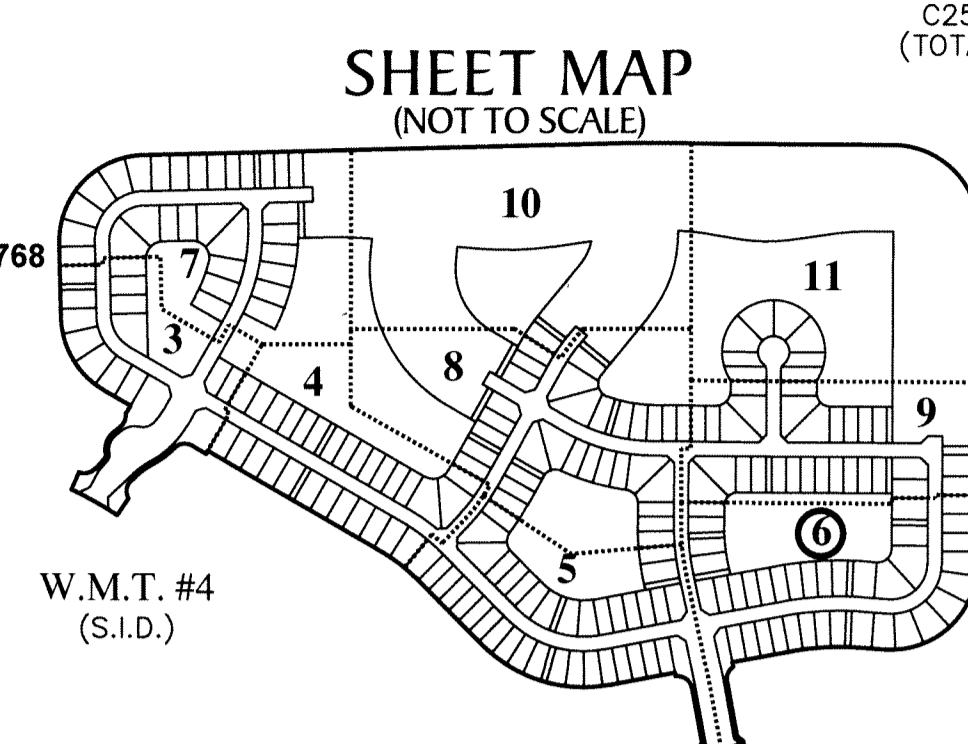
HAMMOCKS OF WESTLAKE

BEING A REPLAT OF TRACT "Q" OF TOWN CENTER PARKWAY NORTH PER PLAT BOOK 123, PAGE 106-118, BEING A PORTION OF SECTION 6, TOWNSHIP 43 SOUTH, RANGE 41 EAST, AND A PORTION OF SECTION 1, TOWNSHIP 43 SOUTH, RANGE 40 EAST, CITY OF WESTLAKE, PALM BEACH COUNTY, FLORIDA

76



- LEGEND:**
- P.B.C. --- Palm Beach County
 - P.B. --- Plat Book
 - FCM --- Found Concrete Monument
 - O.R. --- Official Records Book
 - (TYP) --- Typical
 - (RB) --- Radial Bearing
 - (NR) --- Non-Radial line
 - (PR) --- Private Road
 - (U.E.) --- Utility Easement
 - (D.E.) --- Drainage Easement
 - C --- Curve
 - L --- Line
 - B.T. --- Buffer Tract
 - O.S.T. --- Open Space Tract
 - R --- RADIUS
 - L --- ARC LENGTH
 - D --- DELTA-CENTRAL ANGLE
 - PG. --- Page
 - R.T. --- Recreation Tract
- LEGEND:**
- --- Indicates (P.R.M.) Permanent Reference Monument - 4"x4" Concrete Monument LB7768, unless otherwise noted.
 - ⊕ --- Indicates (P.R.M.) Offset Permanent Reference Monument - 4"x4" Concrete Monument LB7768, unless otherwise noted.
 - --- Indicates (P.C.P.) Permanent Control Point LB7768
 - W.M.T. --- Water Management Tract
 - L.M.E. --- Lake Maintenance Easement
 - L.M.A.E. --- Lake Maintenance Access Easement
 - L.A.E. --- Limited Access Easement
 - S.I.D. --- Seminole Improvement District
 - NAD --- North American Datum
 - LB --- Licensed Business
 - P.S.M. --- Professional Surveyor and Mapper
 - 1/4 --- One Quarter



NO.	RADIUS	DELTA	ARC	CHORD	BEARING
C254	36.00'	089°40'53"	56.35'	50.77'	N 55°44'31" W
C255	633.00'	011°05'11"	122.48'	122.29'	N 05°21'29" W
C256	36.00'	090°00'00"	56.55'	50.91'	N 45°11'07" E
C257	36.00'	090°00'00"	56.55'	50.91'	S 44°48'53" E
C258	36.00'	093°56'39"	59.03'	52.63'	S 47°09'26" W
C259	1212.00'	014°42'43"	311.21'	310.35'	S 86°46'24" W
C371	48.00'	090°00'00"	75.40'	67.88'	S 45°11'07" W
C375	48.00'	015°43'08"	13.17'	13.13'	S 08°02'41" W
C376	48.00'	093°56'39"	78.70'	70.18'	N 47°09'26" E
C377	48.00'	046°58'20"	39.35'	38.26'	N 70°38'36" E
C378	48.00'	046°58'19"	39.35'	38.26'	N 23°40'17" E
C399	175.00'	093°56'39"	286.93'	255.86'	N 47°09'26" E

NO.	BEARING	LENGTH
L6	N 04°07'46" E	12.00'
L15	N 55°34'57" W	35.36'

NO.	RADIUS	DELTA	ARC	CHORD	BEARING
C1	300.00'	093°56'39"	491.89'	438.61'	S 47°09'26" W
C2	900.00'	014°42'43"	231.09'	230.46'	S 86°46'24" W
C3	50.00'	066°18'55"	57.87'	54.70'	S 22°34'33" W
C17	795.00'	012°16'04"	170.22'	169.89'	S 05°56'55" E
C19	1050.00'	014°42'43"	269.61'	268.87'	S 86°46'24" W
C20	150.00'	093°56'39"	245.95'	219.31'	N 47°09'26" E
C25	1025.00'	014°42'43"	263.19'	262.47'	N 86°46'24" E
C45	770.00'	012°16'04"	164.87'	164.55'	N 05°56'55" W
C46	125.00'	093°56'39"	204.95'	182.76'	S 47°09'26" W
C47	1075.00'	014°42'43"	276.03'	275.27'	S 86°46'24" W
C85	1025.00'	002°23'08"	42.68'	42.68'	S 80°36'37" W
C86	1025.00'	003°07'49"	56.00'	55.99'	S 83°22'06" W
C87	1025.00'	003°07'49"	56.00'	55.99'	S 86°29'55" W
C88	1025.00'	003°45'25"	67.21'	67.20'	S 89°56'33" W
C89	1025.00'	002°18'31"	41.30'	41.30'	N 87°01'29" W
C90	1075.00'	001°18'55"	24.68'	24.68'	S 80°04'30" W
C91	1075.00'	002°38'24"	49.53'	49.53'	S 82°03'10" W
C92	1075.00'	002°38'24"	49.53'	49.53'	S 84°41'34" W

NO.	RADIUS	DELTA	ARC	CHORD	BEARING
C93	1075.00'	002°38'24"	49.53'	49.53'	S 87°19'58" W
C94	1075.00'	003°10'05"	59.44'	59.43'	N 89°45'47" W
C95	1075.00'	002°18'31"	43.31'	43.31'	N 87°01'29" W
C96	125.00'	046°58'20"	102.48'	99.63'	N 70°38'36" E
C97	125.00'	046°58'20"	102.48'	99.63'	N 23°40'17" E
C98	175.00'	006°42'00"	20.46'	20.45'	S 89°13'14" E
C99	175.00'	019°28'00"	59.46'	59.17'	N 77°41'46" E
C100	175.00'	020°48'20"	63.55'	63.20'	N 57°33'36" E
C101	175.00'	019°48'20"	60.49'	60.19'	N 37°15'17" E
C102	175.00'	019°10'00"	58.54'	58.27'	N 17°46'07" E
C103	175.00'	008°00'00"	24.43'	24.41'	N 04°11'07" E
C143	900.00'	002°23'08"	37.47'	37.47'	S 80°36'37" W
C144	900.00'	003°07'49"	49.17'	49.17'	S 83°22'06" W
C145	900.00'	003°07'49"	49.17'	49.17'	S 86°29'55" W
C146	841.77'	004°01'01"	59.01'	59.00'	S 89°53'18" W
C147	900.00'	002°18'31"	36.26'	36.26'	N 87°01'29" W
C148	300.00'	006°42'00"	35.08'	35.06'	S 89°13'14" E
C149	300.00'	019°28'00"	101.93'	101.44'	N 77°41'46" E

NO.	RADIUS	DELTA	ARC	CHORD	BEARING
C150	300.00'	020°48'20"	108.94'	108.34'	N 57°33'36" E
C151	300.00'	019°48'20"	103.70'	103.19'	N 37°15'17" E
C152	300.00'	019°10'00"	100.36'	99.89'	N 17°46'07" E
C153	300.00'	008°00'00"	41.89'	41.85'	N 04°11'07" E
C228	770.00'	002°55'47"	39.37'	39.37'	S 01°16'46" E
C229	770.00'	005°12'33"	70.01'	69.98'	S 05°20'56" E
C230	770.00'	004°07'44"	55.49'	55.48'	S 10°01'05" E
C231	645.00'	004°07'44"	46.48'	46.47'	S 10°01'05" E
C232	645.00'	005°12'33"	58.64'	58.62'	S 05°20'56" E
C233	645.00'	002°55'47"	32.98'	32.98'	S 01°16'46" E
C234	645.00'	012°16'04"	138.10'	137.84'	S 05°56'55" E
C235	1200.00'	014°42'43"	308.13'	307.28'	S 86°46'24" W
C236	1200.00'	001°18'55"	27.55'	27.55'	S 80°04'30" W
C237	1200.00'	002°38'24"	55.29'	55.29'	S 82°03'10" W
C238	1200.00'	002°38'24"	55.29'	55.29'	S 84°41'34" W
C239	1200.00'	002°38'24"	55.29'	55.29'	S 87°19'58" W
C240	1200.00'	003°10'05"	66.35'	66.34'	N 89°45'47" W
C241	1200.00'	002°18'31"	48.35'	48.35'	N 87°01'29" W