

MORSE SENIORS CAMPUS TRACTS "O-1" AND "S-1" REPLAT

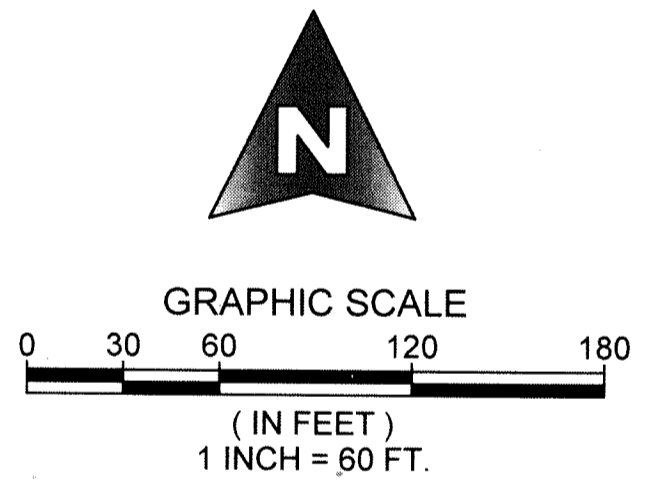
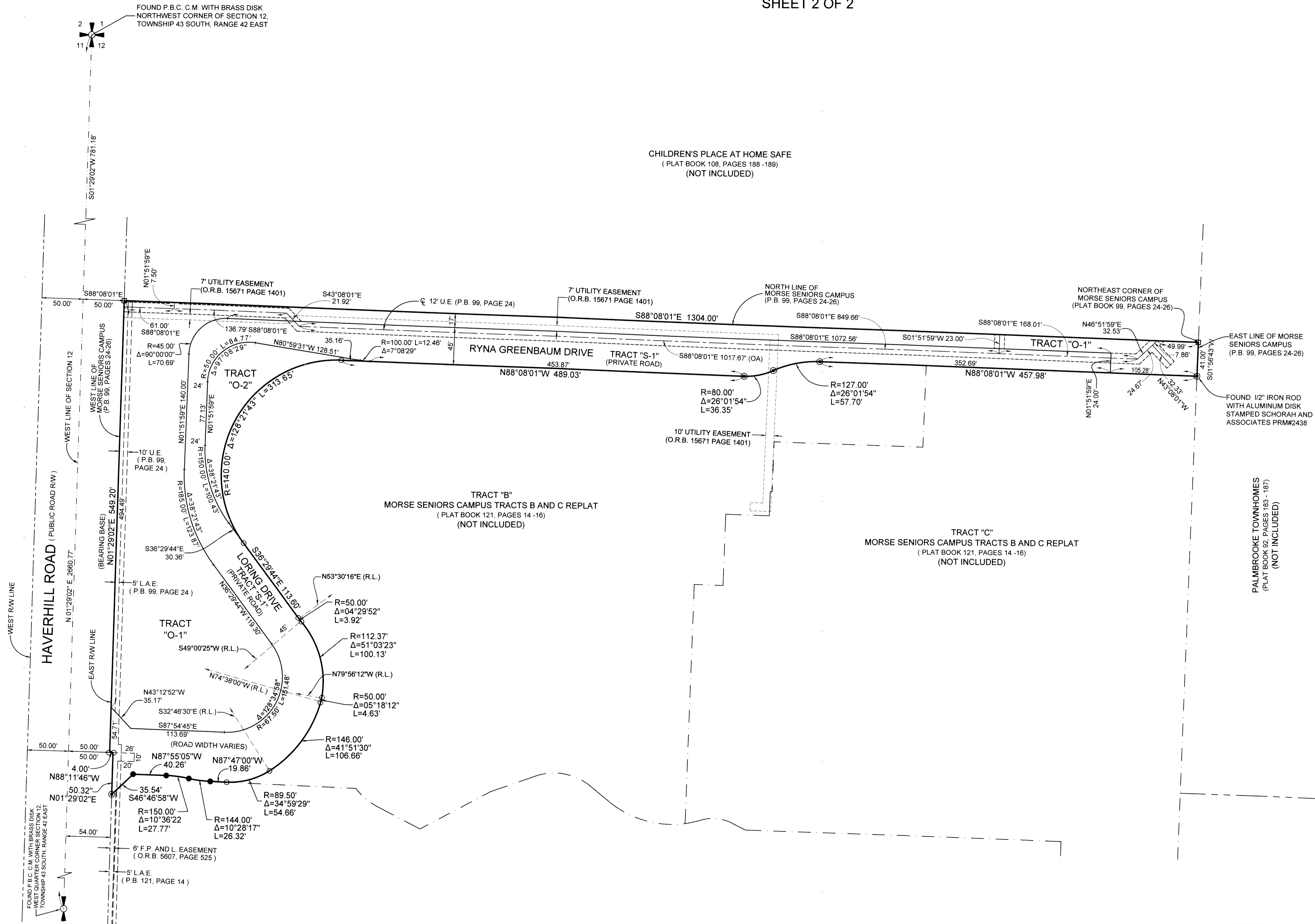
BEING A REPLAT OF TRACTS "O-1" AND "S-1" OF MORSE SENIORS CAMPUS, AS RECORDED IN PLAT BOOK 99, PAGES 24 THROUGH 26, PUBLIC RECORDS OF PALM BEACH COUNTY, FLORIDA, LYING IN SECTION 12, TOWNSHIP 43 SOUTH, RANGE 42 EAST, CITY OF WEST PALM BEACH, PALM BEACH COUNTY, FLORIDA.

SHEET 2 OF 2

62

COUNTY OF PALM BEACH)
 STATE OF FLORIDA) SS
 THIS PLAT WAS FILED FOR RECORD AT)
 M. THIS) DAY OF)
 2017, AND DULY)
 RECORDED IN PLAT BOOK NO.)
 ON PAGE) THRU)
 SHARON R. BOCK,
 CLERK AND COMPTROLLER
 BY:) D.C.

CHILDREN'S PLACE AT HOME SAFE
 (PLAT BOOK 108, PAGES 188 -189)
 (NOT INCLUDED)



SHEET 2 OF 2



MICHAEL B. SCHORAH & ASSOCIATES, INC.
 1850 FOREST HILL BLVD., SUITE 206
 WEST PALM BEACH, FLORIDA 33406
 EB# 2438 TEL. (561) 968-0080 FAX. (561) 642-9726 LB# 2438

MORSE SENIORS CAMPUS
 TRACTS "O-1" AND "S-1" REPLAT

© Civ3D Project\1364 TOWER AT TRADITION\11364 PLAT MORSE S-1 REPLAT.dwg, 7/19/2017 10:34:12 AM Edmundo