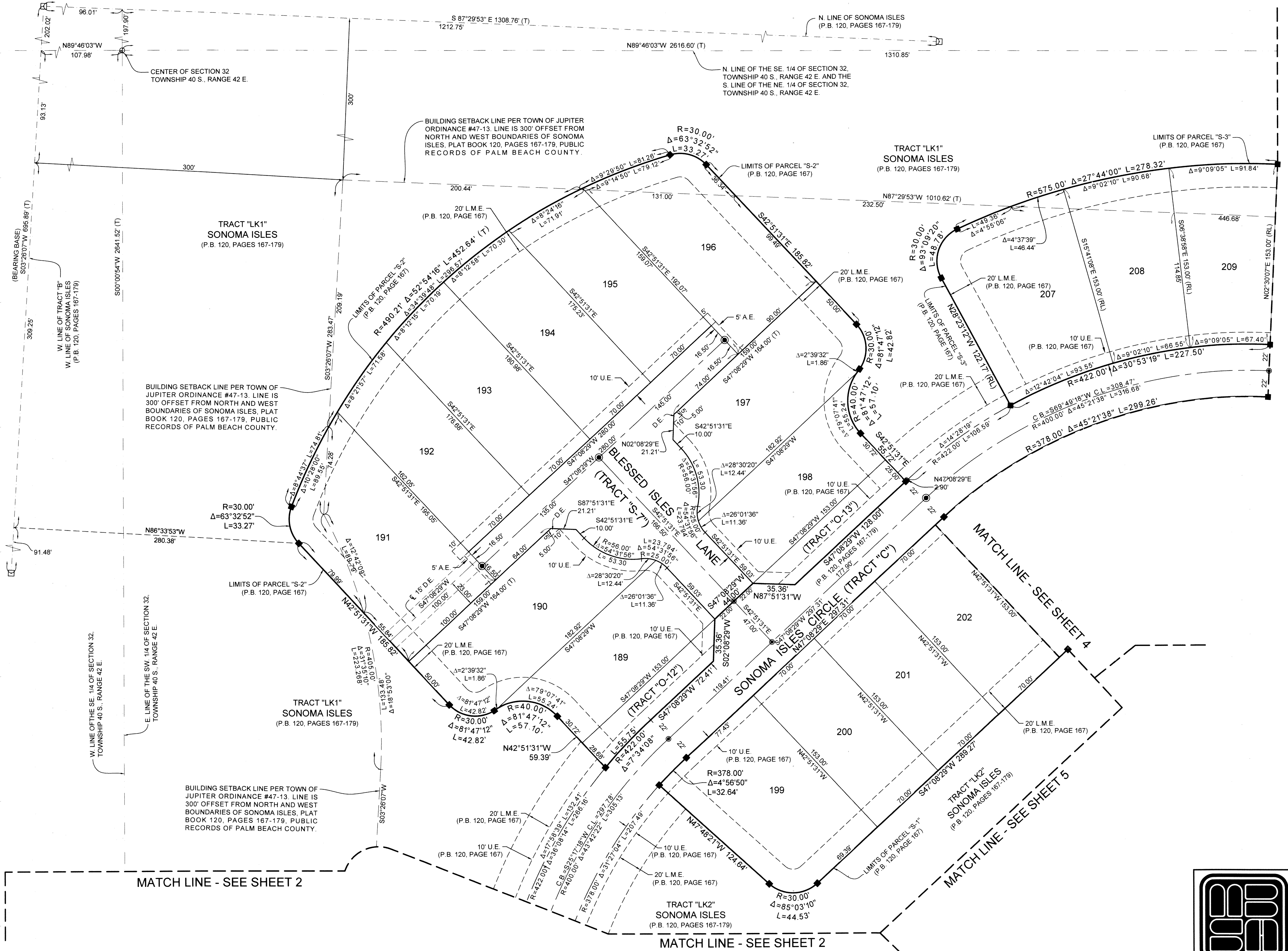
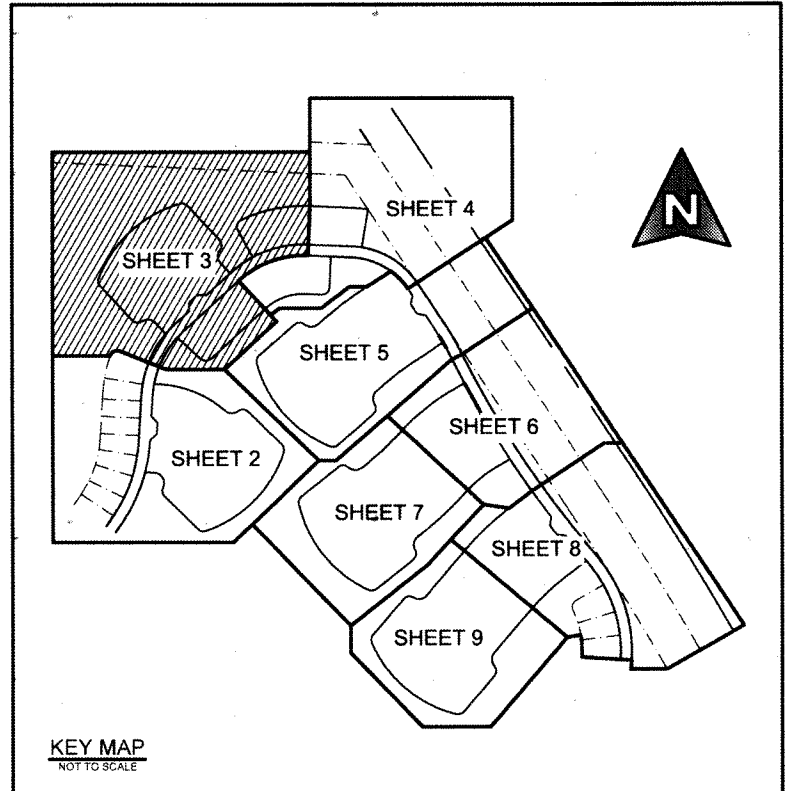


# SONOMA ISLES PLAT 4

LYING IN SECTION 32, TOWNSHIP 40 SOUTH, RANGE 42 EAST AND SECTION 5, TOWNSHIP 41 SOUTH, RANGE 42 EAST, TOWN OF JUPITER, PALM BEACH COUNTY, FLORIDA, BEING A RE-PLAT OF PARCELS "R", "S-1", "S-2", "S-3", "T", "U" AND "V", PLAT OF SONOMA ISLES, AS RECORDED IN PLAT BOOK 120, PAGES 167 THROUGH 179, INCLUSIVE, PUBLIC RECORDS OF PALM BEACH COUNTY, FLORIDA  
 SHEET 3 OF 9 MARCH, 2017

# 27

COUNTY OF PALM BEACH )  
 STATE OF FLORIDA ) SS  
 THIS PLAT WAS FILED FOR RECORD AT )  
 M. THIS ) DAY OF )  
 2017, AND DULY )  
 RECORDED IN PLAT BOOK NO. )  
 ON PAGE ) THRU )  
 SHARON R. BOCK,  
 CLERK AND COMPTROLLER  
 BY: \_\_\_\_\_ D.C.

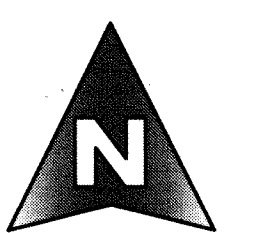
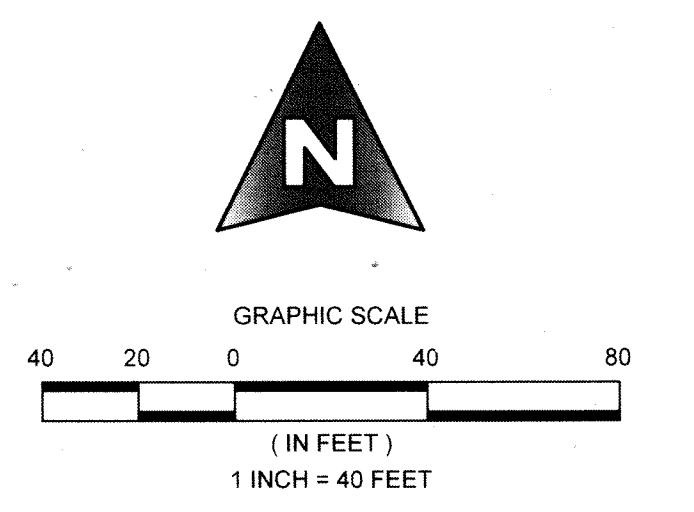


MATCH LINE - SEE SHEET 4

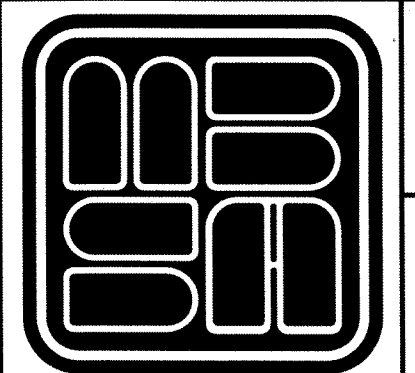
MATCH LINE - SEE SHEET 4

MATCH LINE - SEE SHEET 5

- LEGEND**
- P.C.P. = PERMANENT CONTROL POINT
  - P.R.M. = PERMANENT REFERENCE MONUMENT
  - C.M. = CONCRETE MONUMENT
  - O.R.B. = OFFICIAL RECORD BOOK
  - D.B. = DEED BOOK
  - P.B. = PLAT BOOK
  - P.B.C. = PALM BEACH COUNTY
  - F.D.O.T. = FLORIDA DEPARTMENT OF TRANSPORTATION
  - FD. = FOUND
  - R/W. = RIGHT OF WAY
  - (T) = TOTAL
  - ℄ = CENTERLINE
  - U.E. = UTILITY EASEMENT
  - D.E. = DRAINAGE EASEMENT
  - L.A.E. = LIMITED ACCESS EASEMENT
  - L.B.E. = LANDSCAPE BUFFER EASEMENT
  - L.M.E. = LAKE MAINTENANCE EASEMENT
  - A.E. = ACCESS EASEMENT
  - RL = RADIAL
  - T = TOTAL
  - R = RADIUS
  - L = ARC LENGTH
  - Δ = CURVE CENTRAL ANGLE
  - Δ.B. = CHORD BEARING
  - C.L. = CHORD LENGTH
  - = SET 1/2" IRON ROD WITH CAP STAMPED MBSA 2438
  - ⊙ = NAIL AND BRASS DISK STAMPED P.C.P. LB 2438 TO BE SET PER THE PLAT OF SONOMA ISLES AS RECORDED IN PLAT BOOK 120, PAGES 167-179
  - = SET P.R.M. 1/2" IRON ROD WITH ALUMINUM DISK STAMPED SCHORAH AND ASSOCIATES PRM LB#2438
  - = FD. P.R.M. 1/2" IRON ROD WITH ALUMINUM DISK STAMPED SCHORAH AND ASSOCIATES PRM LB#2438
  - ⊕ = SECTION CORNER
  - ⊕ = 1/4 SECTION CORNER
  - S.F. = SQUARE FEET



SHEET 3 OF 9



**MICHAEL B. SCHORAH & ASSOCIATES, INC.**  
 1650 FOREST HILL BLVD., SUITE 206  
 WEST PALM BEACH, FLORIDA 33406  
 EB# 2438 TEL. (561) 968-0080 FAX. (561) 642-9726 LB# 2438

**SONOMA ISLES PLAT 4**

P:\GIS\Projects\1474 SONOMA ISLES\1474 SONOMA PLAT 4.dwg 5/27/2017 11:15:10 PM 1/27/17