

SONOMA ISLES PLAT 4

LYING IN SECTION 32, TOWNSHIP 40 SOUTH, RANGE 42 EAST AND SECTION 5, TOWNSHIP 41 SOUTH, RANGE 42 EAST,
TOWN OF JUPITER, PALM BEACH COUNTY, FLORIDA, BEING A RE-PLAT OF PARCELS "R", "S-1", "S-2", "S-3", "T", "U" AND "V",
PLAT OF SONOMA ISLES, AS RECORDED IN PLAT BOOK 120, PAGES 167 THROUGH 179, INCLUSIVE,
PUBLIC RECORDS OF PALM BEACH COUNTY, FLORIDA

SHEET 2 OF 9

MARCH, 2017

26

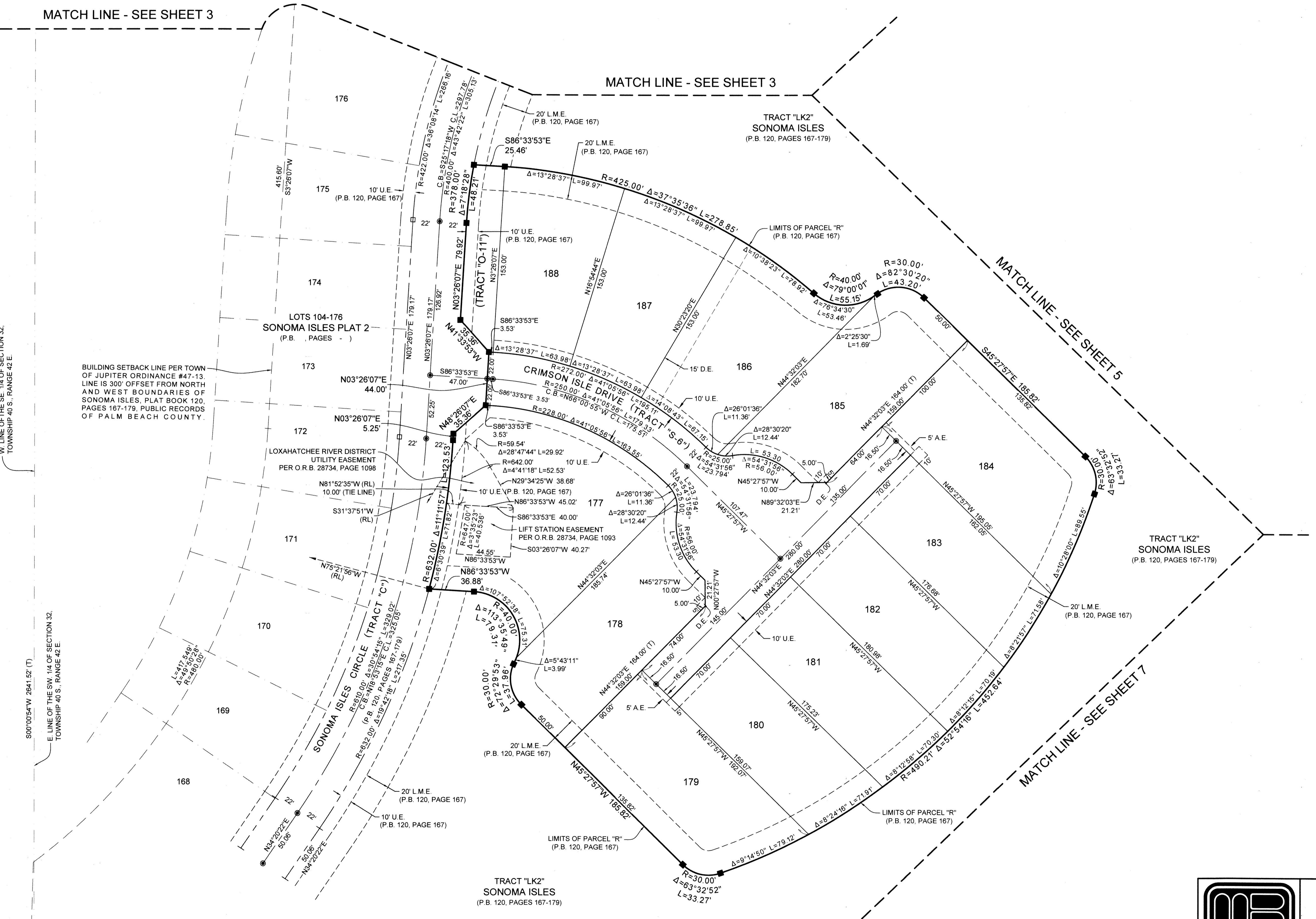
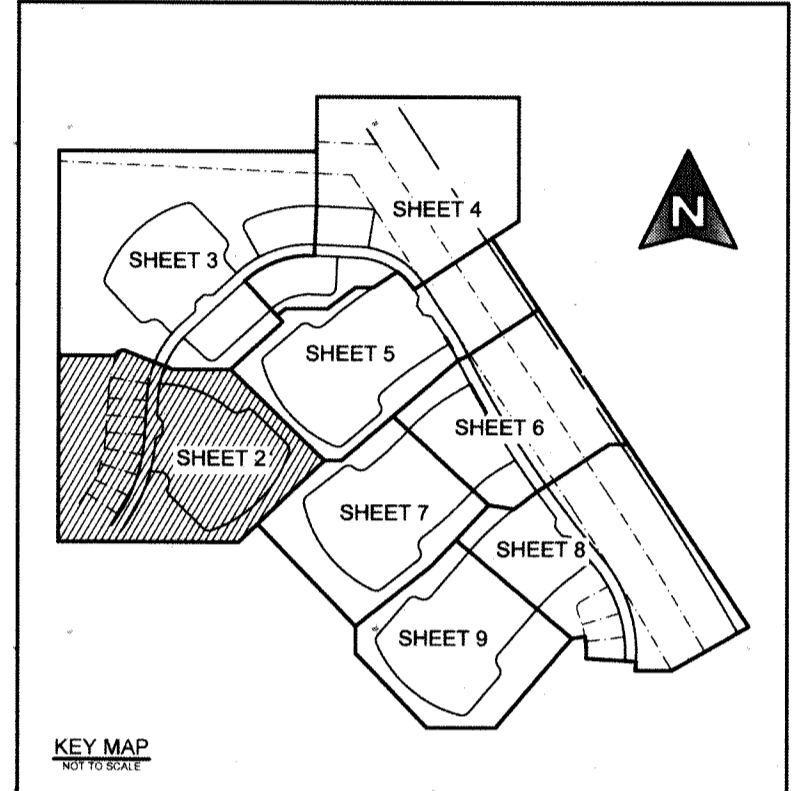
COUNTY OF PALM BEACH)
STATE OF FLORIDA) SS
THIS PLAT WAS FILED FOR RECORD AT _____ M. THIS DAY OF _____ 2017, AND DULY
RECORDED IN PLAT BOOK NO. _____
ON PAGE _____ THRU _____
SHARON R. BOCK,
CLERK AND COMPTROLLER
BY: _____, D.C.

MATCH LINE - SEE SHEET 3

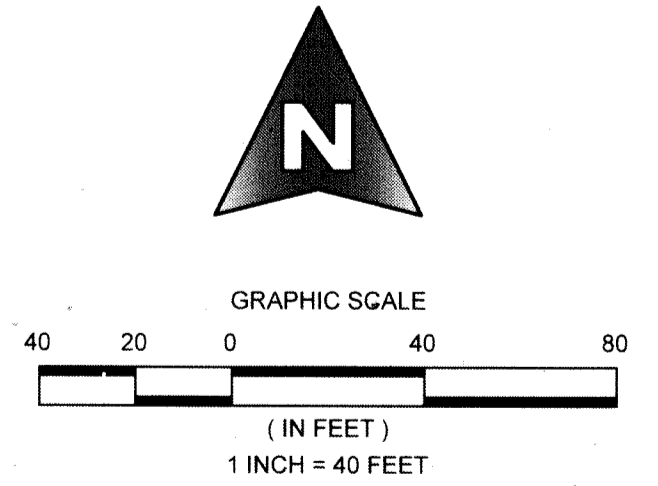
MATCH LINE - SEE SHEET 3

MATCH LINE - SEE SHEET 5

MATCH LINE - SEE SHEET 7



- LEGEND
- P.C.P. = PERMANENT CONTROL POINT
 - P.R.M. = PERMANENT REFERENCE MONUMENT
 - C.M. = CONCRETE MONUMENT
 - O.R.B. = OFFICIAL RECORD BOOK
 - D.B. = DEED BOOK
 - P.B. = PLAT BOOK
 - P.B.C. = PALM BEACH COUNTY
 - F.D.O.T. = FLORIDA DEPARTMENT OF TRANSPORTATION
 - FD. = FOUND
 - R/W. = RIGHT OF WAY
 - (T) = TOTAL
 - CL. = CENTERLINE
 - U.E. = UTILITY EASEMENT
 - D.E. = DRAINAGE EASEMENT
 - L.A.E. = LIMITED ACCESS EASEMENT
 - L.B.E. = LANDSCAPE BUFFER EASEMENT
 - L.M.E. = LAKE MAINTENANCE EASEMENT
 - A.E. = ACCESS EASEMENT
 - RL. = RADIAL
 - T. = TOTAL
 - R. = RADIUS
 - L. = ARC LENGTH
 - Δ. = CURVE CENTRAL ANGLE
 - C.B. = CHORD BEARING
 - C.L. = CHORD LENGTH
 - = SET 1/2" IRON ROD WITH CAP STAMPED MBSA 2438
 - ⊙ = NAIL AND BRASS DISK STAMPED P.C.P. LB 2438 TO BE SET PER THE PLAT OF SONOMA ISLES AS RECORDED IN PLAT BOOK 120, PAGES 167-179
 - = SET P.R.M. 1/2" IRON ROD WITH ALUMINUM DISK STAMPED SCHORAH AND ASSOCIATES PRM LB#2438
 - = FD. P.R.M. 1/2" IRON ROD WITH ALUMINUM DISK STAMPED SCHORAH AND ASSOCIATES PRM LB#2438
 - ⊕ = SECTION CORNER
 - ⊗ = 1/4 SECTION CORNER
 - S.F. = SQUARE FEET



SHEET 2 OF 9



MICHAEL B. SCHORAH & ASSOCIATES, INC.
1850 FOREST HILL BLVD., SUITE 206
WEST PALM BEACH, FLORIDA 33406
EB# 2438 TEL. (561) 968-0080 FAX. (561) 642-9726 LB# 2438

SONOMA ISLES PLAT 4

P:\GISD\Projects\1647A SONOMA ISLES\1647 SONOMA PLAT 4.dwg 6/27/2017 3:17:16 PM L:\s...