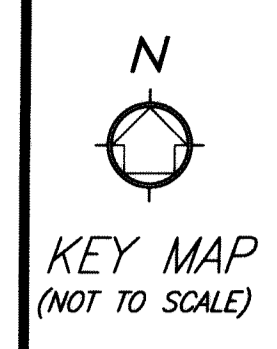
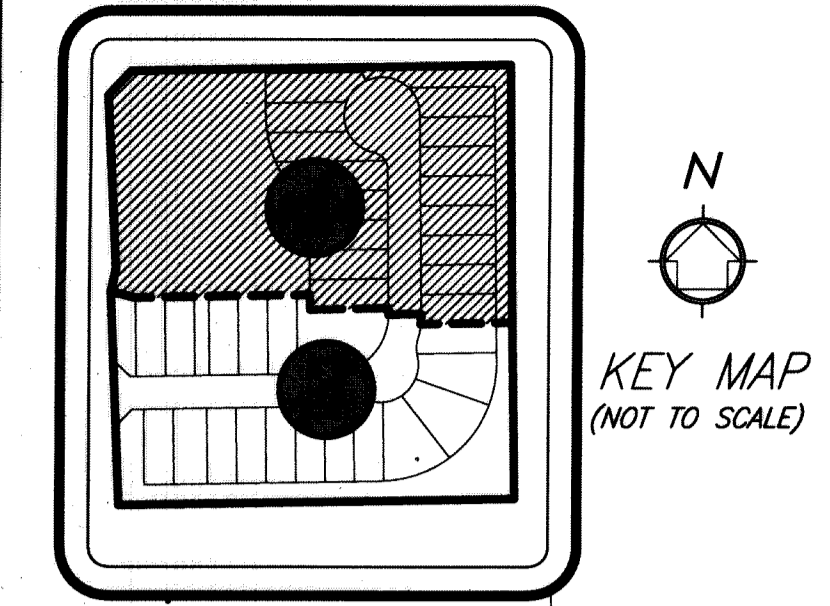


VILLA TARA

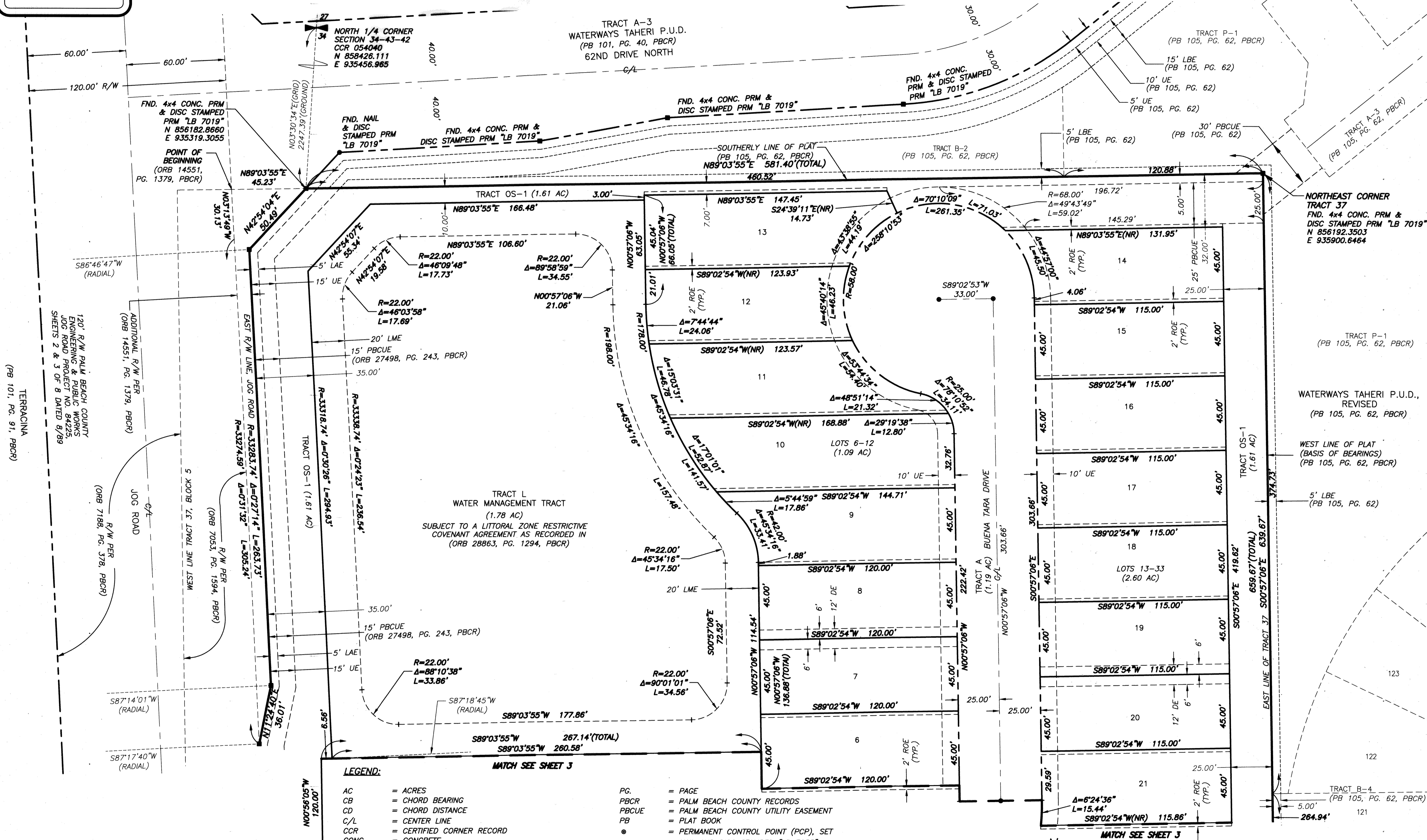
BEING A REPLAT OF TRACT 37, BLOCK 5, PALM BEACH FARMS COMPANY PLAT NO. 3, RECORDED IN PLAT BOOK 2, PAGES 45 THROUGH 54, LESS THOSE PORTIONS CONVEYED TO PALM BEACH COUNTY FOR RIGHT-OF-WAY PURPOSES, RECORDED IN OFFICIAL RECORDS BOOK 7053, AT PAGE 1594 AND OFFICIAL RECORDS BOOK 14551, AT PAGE 1379, ALL BEING OF THE PALM BEACH COUNTY PUBLIC RECORDS, SAID LANDS LYING AND SITUATE IN SECTION 34, TOWNSHIP 43 SOUTH, RANGE 42 EAST, PALM BEACH COUNTY, FLORIDA.



196

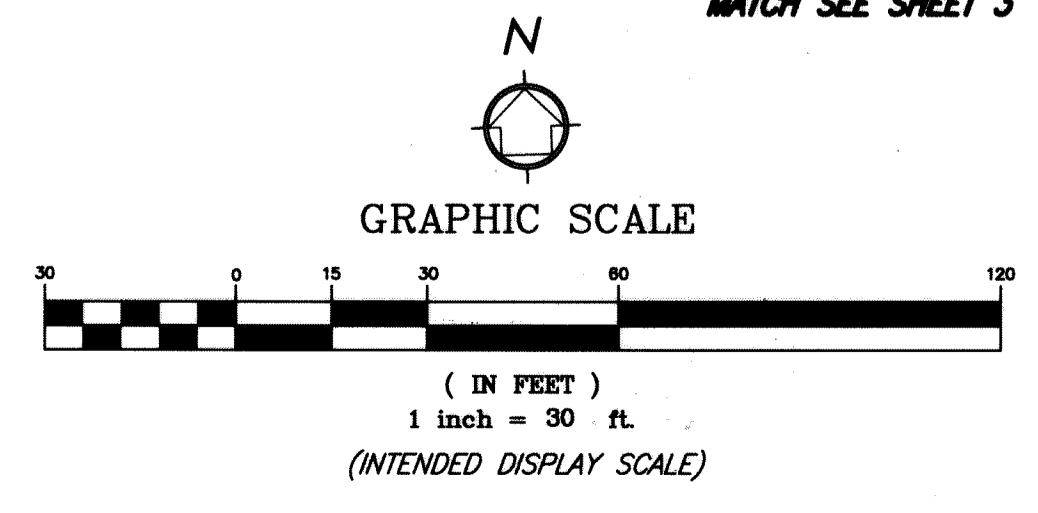
State of Florida }
County of Palm Beach } SS
THIS PLAT WAS FILED FOR RECORD AT _____ M.
THIS _____ DAY OF _____ A.D. 2017 AND DULY RECORDED
IN PLAT BOOK _____ ON PAGES _____ THROUGH _____
SHARON R. BOCK
CLERK AND COMPTROLLER
BY: _____
DEPUTY CLERK

SHEET 4 OF 4 SHEETS



LEGEND:

- | | | | |
|-------|---|--------|---|
| AC | = ACRES | PG. | = PAGE |
| CB | = CHORD BEARING | PBCR | = PALM BEACH COUNTY RECORDS |
| CD | = CHORD DISTANCE | PBCUE | = PALM BEACH COUNTY UTILITY EASEMENT |
| C/L | = CENTER LINE | PB | = PLAT BOOK |
| CCR | = CERTIFIED CORNER RECORD | ● | = PERMANENT CONTROL POINT (PCP), SET NAIL AND DISC STAMPED "LB 7055" |
| CONC. | = CONCRETE | PRM | = PERMANENT REFERENCE MONUMENT |
| DE | = DRAINAGE EASEMENT | ROE | = ROOF OVERHANG EASEMENT |
| Δ | = DELTA (CENTRAL ANGLE) | R | = RADIUS |
| FND. | = FOUND | R/W | = RIGHT-OF-WAY |
| L | = LENGTH OF ARC | SF | = SQUARE FEET |
| LB | = LICENSED BUSINESS | (TYP.) | = TYPICAL |
| LBE | = LANDSCAPE BUFFER EASEMENT | UE | = UTILITY EASEMENT |
| LME | = LAKE MAINTENANCE EASEMENT | ■ | = SET 4"x4" CONCRETE PRM & ALUMINUM DISC STAMPED "LB 7055 PRM" UNLESS OTHERWISE NOTED |
| LMAE | = LAKE MAINTENANCE ACCESS EASEMENT | ① | = SHEET NUMBER |
| LWDD | = LAKE WORTH DRAINAGE DISTRICT | | |
| LWDE | = LAKE WORTH DRAINAGE DISTRICT EASEMENT | | |
| NR | = NON-RADIAL | | |
| ORB | = OFFICIAL RECORDS BOOK | | |



WGI
Wantman Group, Inc.
Engineering ♦ Planning ♦ Surveying ♦ Environmental
2035 VISTA PARKWAY, SUITE 100, WEST PALM BEACH, FL 33411
(866) 909-2220 phone (561) 687-1110 fax
CERTIFICATE OF AUTHORIZATION No. LB 7055
ORLANDO - PORT ST. LUCIE - TAMPA
THIS INSTRUMENT WAS PREPARED BY PATRICK MEEDS, P.S.M.
PROFESSIONAL SURVEYOR AND MAPPER, LICENSE NO. 4728
FOR THE FIRM: WANTMAN GROUP, INC.