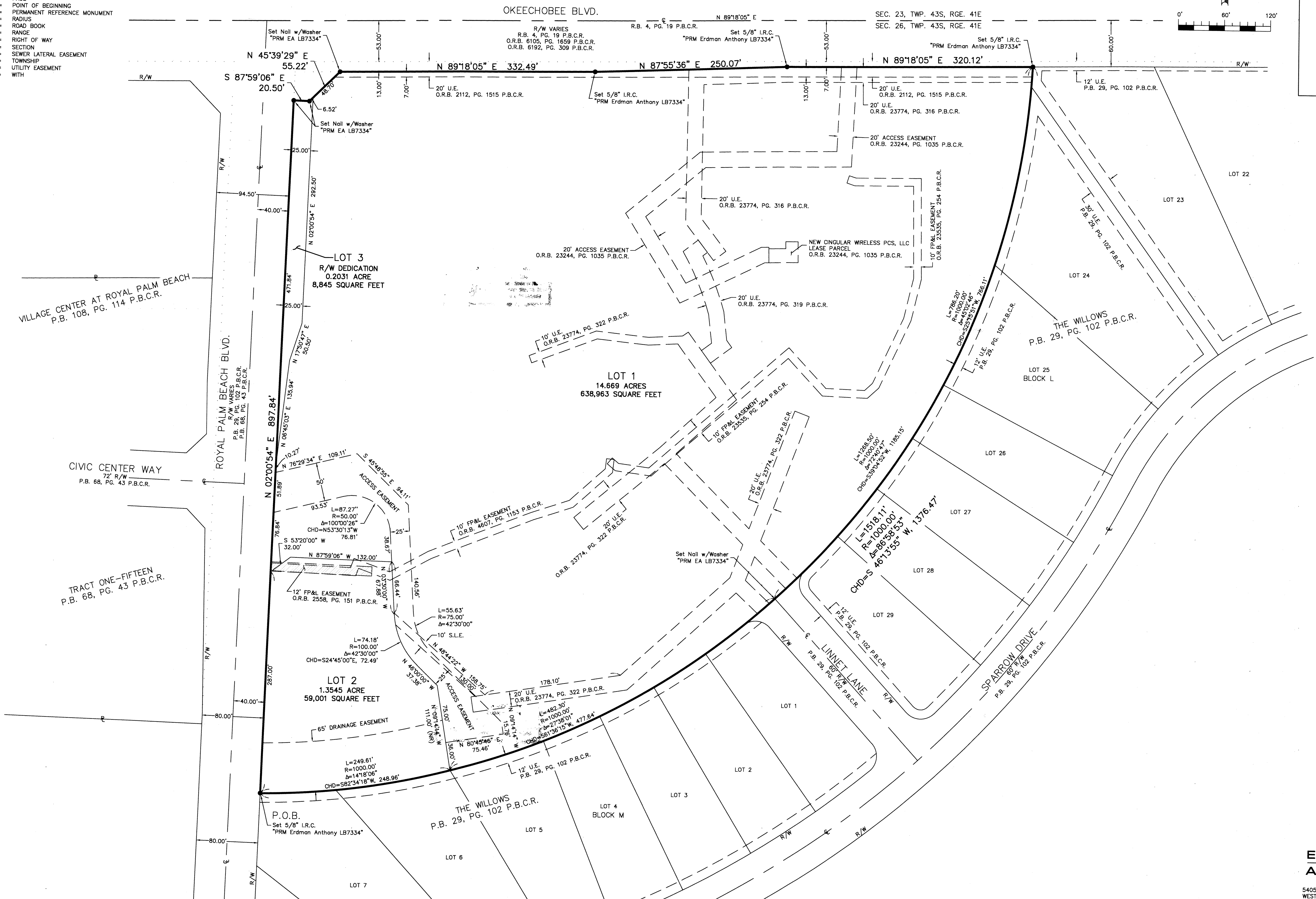
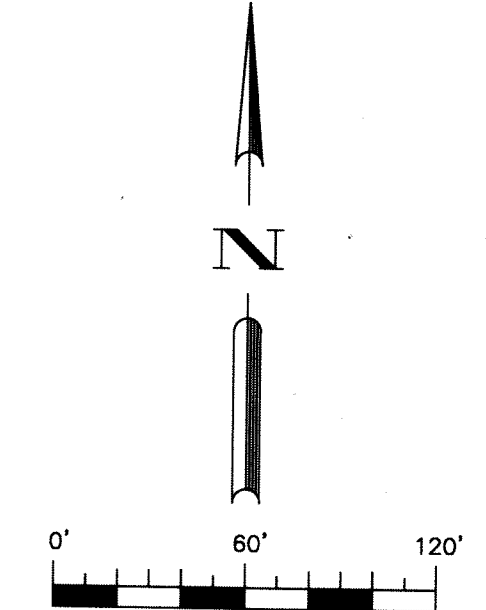


ABBREVIATIONS:

- CL = CENTERLINE
- CHD. = CHORD
- Δ = DELTA ANGLE
- EA = ERDMAN ANTHONY
- FP&L = FLORIDA POWER AND LIGHTING
- I.R.C. = IRON ROD WITH CAP
- L = ARC LENGTH
- LB = LICENSED BUSINESS
- (NR) = NON RADIAL
- O.R.B. = OFFICIAL RECORDS BOOK
- P.L. = PROPERTY LINE
- P.B.C.R. = PALM BEACH COUNTY RECORDS
- P.B. = PLAT BOOK
- PG. = PAGE
- P.O.B. = POINT OF BEGINNING
- P.R.M. = PERMANENT REFERENCE MONUMENT
- R = RADIUS
- R.B. = ROAD BOOK
- RGE. = RANGE
- R/W = RIGHT OF WAY
- SEC. = SECTION
- S.L.E. = SEWER LATERAL EASEMENT
- TWP. = TOWNSHIP
- U.E. = UTILITY EASEMENT
- W/ = WITH

VILLAGE HALL

A PORTION OF THE NORTHWEST QUARTER OF SECTION 26, TOWNSHIP 43 SOUTH, RANGE 41 EAST
 ROYAL PALM BEACH, PALM BEACH COUNTY, FLORIDA
 APRIL 2017



VILLAGE CENTER AT ROYAL PALM BEACH
 P.B. 108, PG. 114 P.B.C.R.

CIVIC CENTER WAY
 72' R/W
 P.B. 68, PG. 43 P.B.C.R.

TRACT ONE-FIFTEEN
 P.B. 68, PG. 43 P.B.C.R.