

# CONGRESS AVENUE OFFICE PARK

LYING IN THE NORTHEAST QUARTER (N.E. 1/4) OF SECTION 29,  
TOWNSHIP 43 SOUTH, RANGE 43 EAST, PALM BEACH COUNTY, FLORIDA,  
AND BEING A REPLAT OF A PORTION OF THE REPLAT OF MADRID PARK, RECORDED IN  
PLAT BOOK 20, PAGE 20, OF THE PUBLIC RECORDS OF PALM BEACH COUNTY, FLORIDA

SHEET 2 OF 2

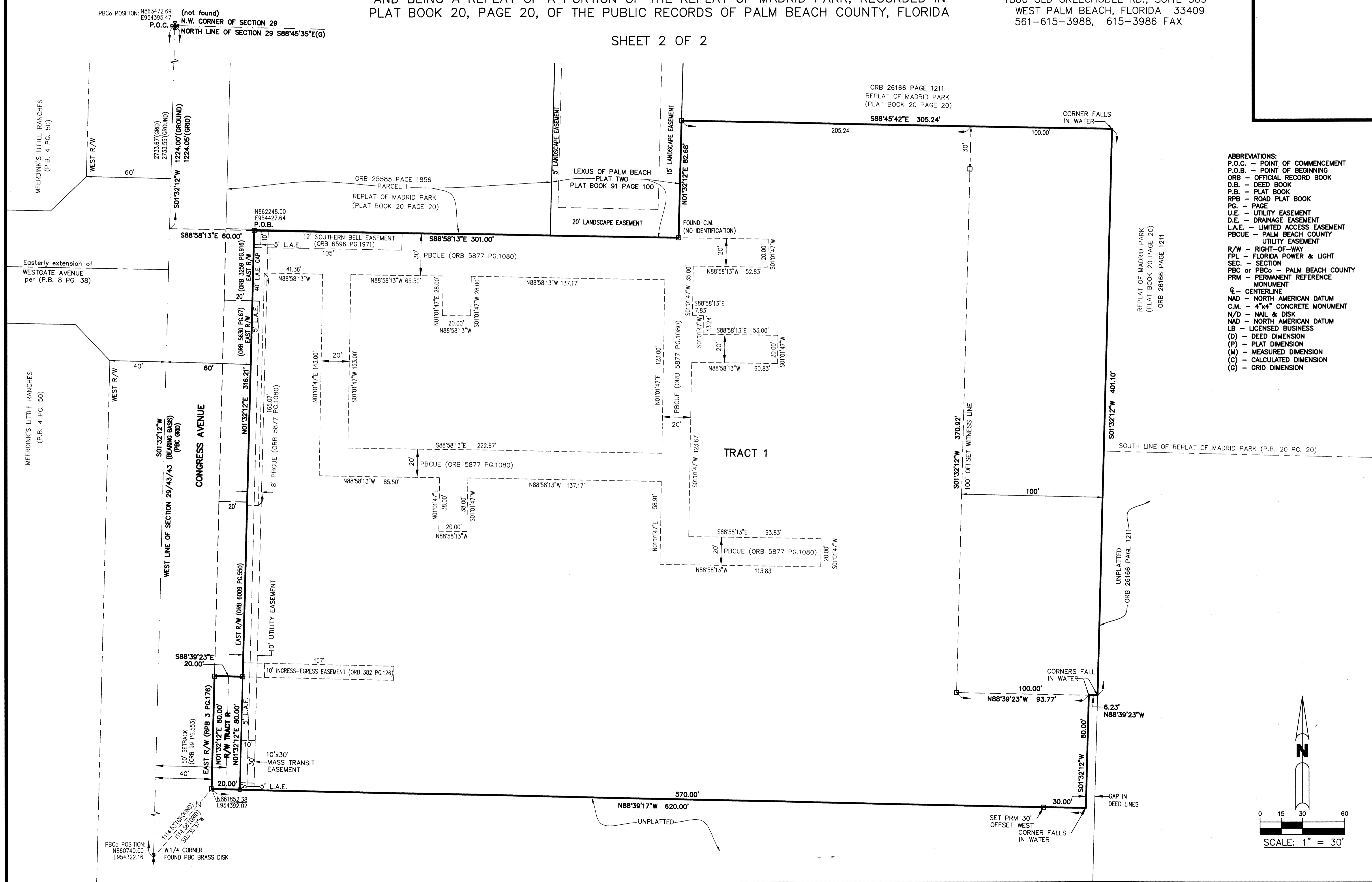
PREPARING SURVEYOR & MAPPER'S STATEMENT

THIS INSTRUMENT WAS PREPARED BY  
JOHN E. PHILLIPS III, P.S.M. 4826

**B** **BROWN & PHILLIPS, INC.**

CERTIFICATE OF AUTHORIZATION # LB 6473  
1860 OLD OKEECHOBEE RD., SUITE 509  
WEST PALM BEACH, FLORIDA 33409  
561-615-3988, 615-3986 FAX

139



- ABBREVIATIONS:**
- P.O.C. - POINT OF COMMENCEMENT
  - P.O.B. - POINT OF BEGINNING
  - ORB - OFFICIAL RECORD BOOK
  - D.B. - DEED BOOK
  - P.B. - PLAT BOOK
  - RPB - ROAD PLAT BOOK
  - PG. - PAGE
  - U.E. - UTILITY EASEMENT
  - D.E. - DRAINAGE EASEMENT
  - L.A.E. - LIMITED ACCESS EASEMENT
  - PBCUE - PALM BEACH COUNTY UTILITY EASEMENT
  - R/W - RIGHT-OF-WAY
  - FPL - FLORIDA POWER & LIGHT
  - SEC. - SECTION
  - PBC or PBCo - PALM BEACH COUNTY
  - PRM - PERMANENT REFERENCE MONUMENT
  - C - CENTERLINE
  - NAD - NORTH AMERICAN DATUM
  - C.M. - 4"x4" CONCRETE MONUMENT
  - N/D - NAIL & DISK
  - NAD - NORTH AMERICAN DATUM
  - LB - LICENSED BUSINESS
  - (D) - DEED DIMENSION
  - (P) - PLAT DIMENSION
  - (M) - MEASURED DIMENSION
  - (C) - CALCULATED DIMENSION
  - (G) - GRID DIMENSION

