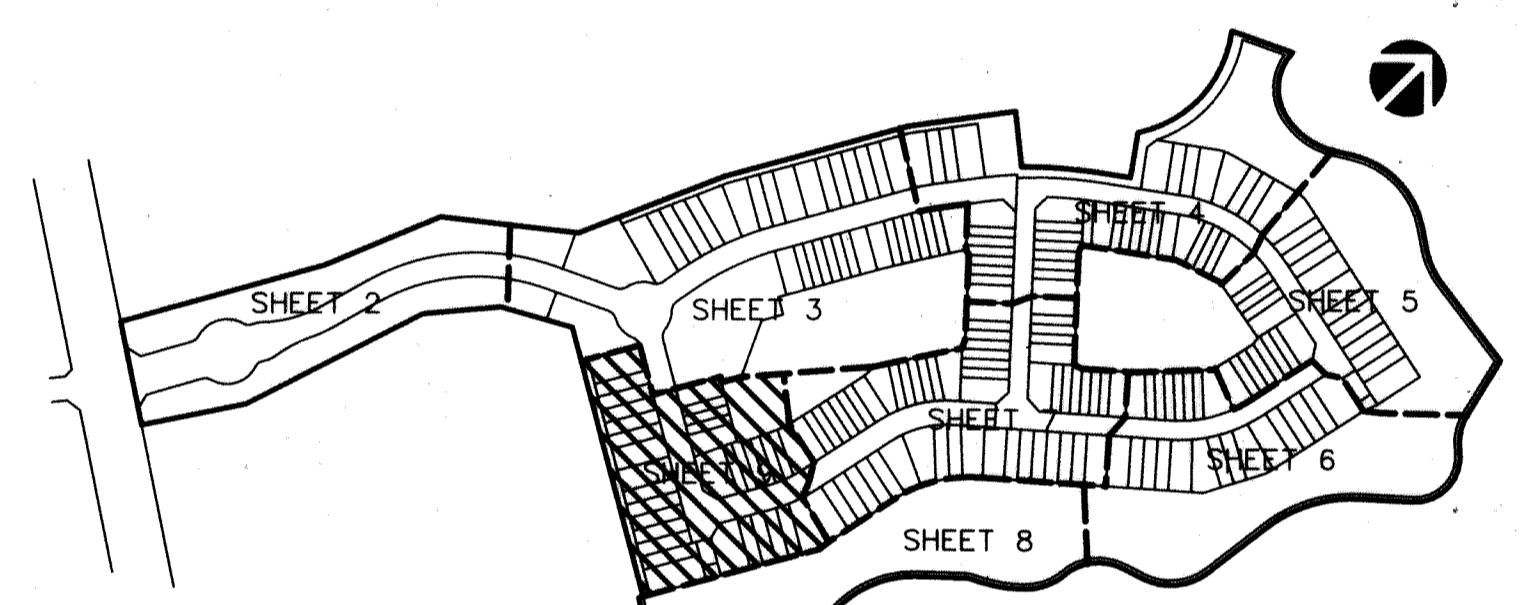
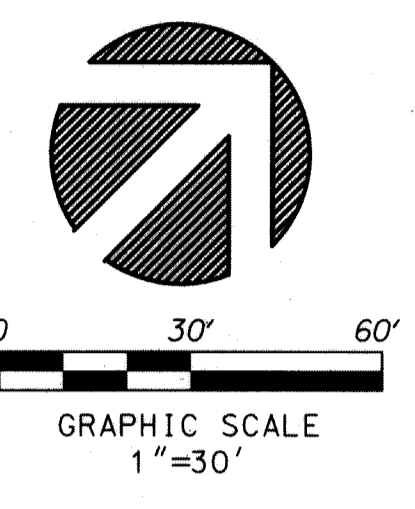
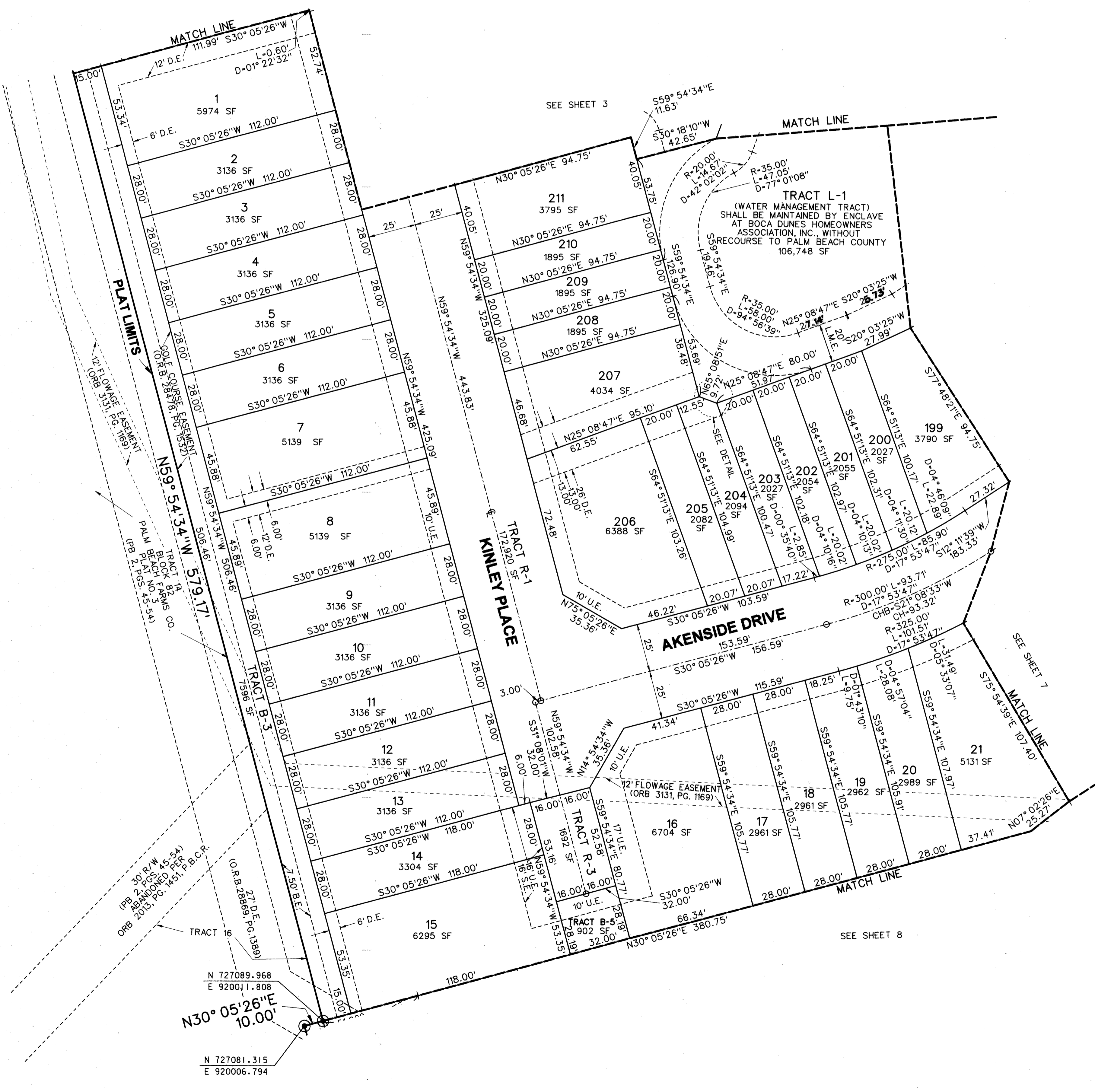


BOCA DUNES PUD

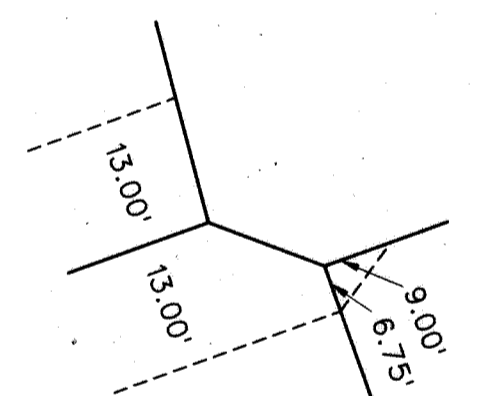
A REPLAT OF A PORTION OF TRACTS 90-92, 101-103, BLOCK 81 AND A PORTION OF TRACTS 6-10, 13-16, AND 32, BLOCK 82, ALL OF "PALM BEACH FARMS CO. PLAT NO.3" (P.B. 2, PGS 45-54, P.B.C.R.) AND PORTIONS OF ADJACENT ABANDONED RIGHTS-OF-WAY (O.R.B. 2013, PG. 1451, P.B.C.R.) IN SECTIONS 30 & 31, TOWNSHIP 47 SOUTH, RANGE 42 EAST PALM BEACH COUNTY, FLORIDA.

129

SHEET 9 OF 9



KEY MAP
NOT TO SCALE



DETAIL
NOT TO SCALE

- LEGEND:**
- SET P.R.M. (UNLESS OTHERWISE NOTED)-4" X4" CONC. MON. WITH ALUMINUM DISK STAMPED P.R.M. #LB7264
 - PERMANENT CONTROL POINT (NAIL & DISK •LB7264) CENTERLINE
- ABBREVIATIONS:**
- B.E. BUFFER EASEMENT
 - CH CHORD BEARING
 - CHB CHORD BEARING
 - CONC. CONCRETE
 - COR. CORNER
 - D DELTA (CENTRAL ANGLE)
 - D.E. DRAINAGE EASEMENT
 - D.T. DRIVEWAY TRACT
 - FND. FOUND
 - L. ARCLength
 - L.A.E. LIMITED ACCESS EASEMENT
 - L.B. LICENSED BUSINESS
 - L.E. LANDSCAPE EASEMENT
 - L.M.E. LAKE MAINTENANCE EASEMENT
 - L.M.A.E. LAKE MAINTENANCE ACCESS EASEMENT
 - L.S. LICENSED SURVEYOR
 - L.S.E. LIFT STATION EASEMENT
 - L.W.D.D. LAKE WORTH DRAINAGE DISTRICT
- MON.**
- O.R.B. OFFICIAL RECORDS BOOK
 - NON-RADIAL
 - P.B. PLAT BOOK
 - P.B.C. PALM BEACH COUNTY
 - P.B.C.R. PALM BEACH COUNTY RECORDS
 - P.B.C.U.E. PALM BEACH COUNTY UTILITY EASEMENT
 - PG. PAGE
 - P.C.P. PERMANENT CONTROL POINT
 - P.O.B. POINT OF BEGINNING
 - P.O.C. POINT OF COMMENCEMENT
 - P.P.M. PERMANENT REFERENCE MONUMENT
 - P.S.M. PROFESSIONAL SURVEYOR & MAPPER
 - P.U.D. PLANNED UNIT DEVELOPMENT
 - R. RADIAL
 - RAD. RADIAL
 - RAW. RIGHT-OF-WAY
 - SEC. SECTION
 - S.E. SIDEWALK EASEMENT
 - S.F. SQUARE FEET
 - U.E. UTILITY EASEMENT

