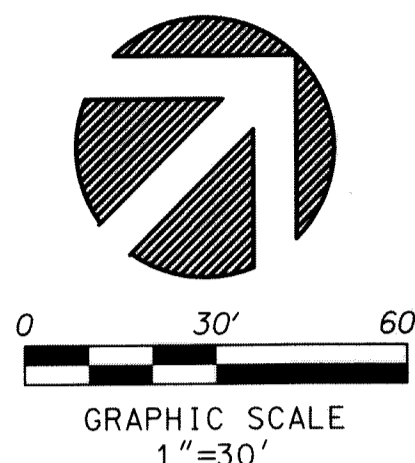


# PERIMETER

**SURVEYING & MAPPING**  
Certificate of Authorization No. LB7264  
Prepared by: Jeff S. Hodapp, P.S.M.  
947 Clint Moore Road  
Boca Raton, Florida 33487  
Tel: (561) 241-9988  
Fax: (561) 241-5182

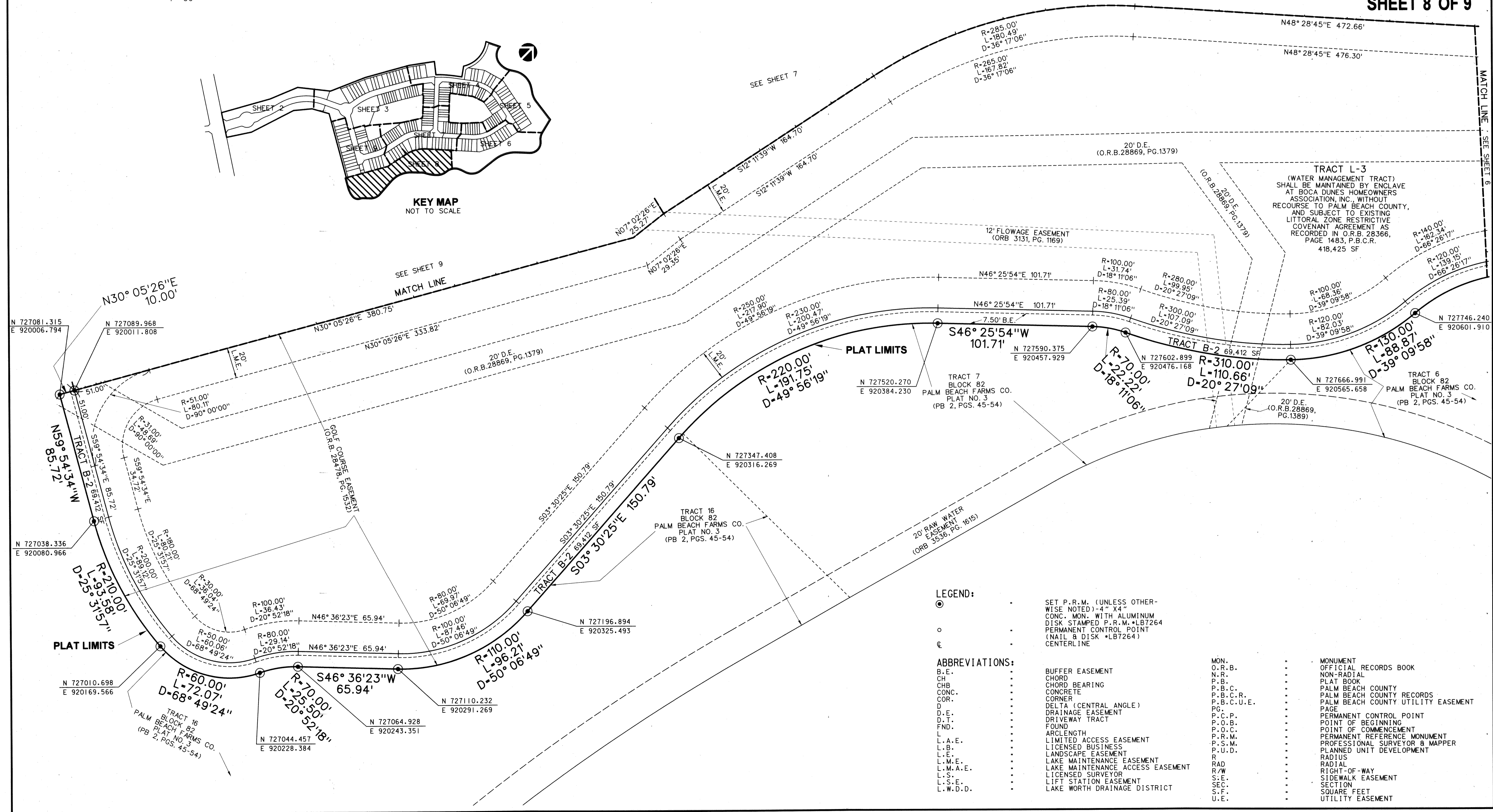
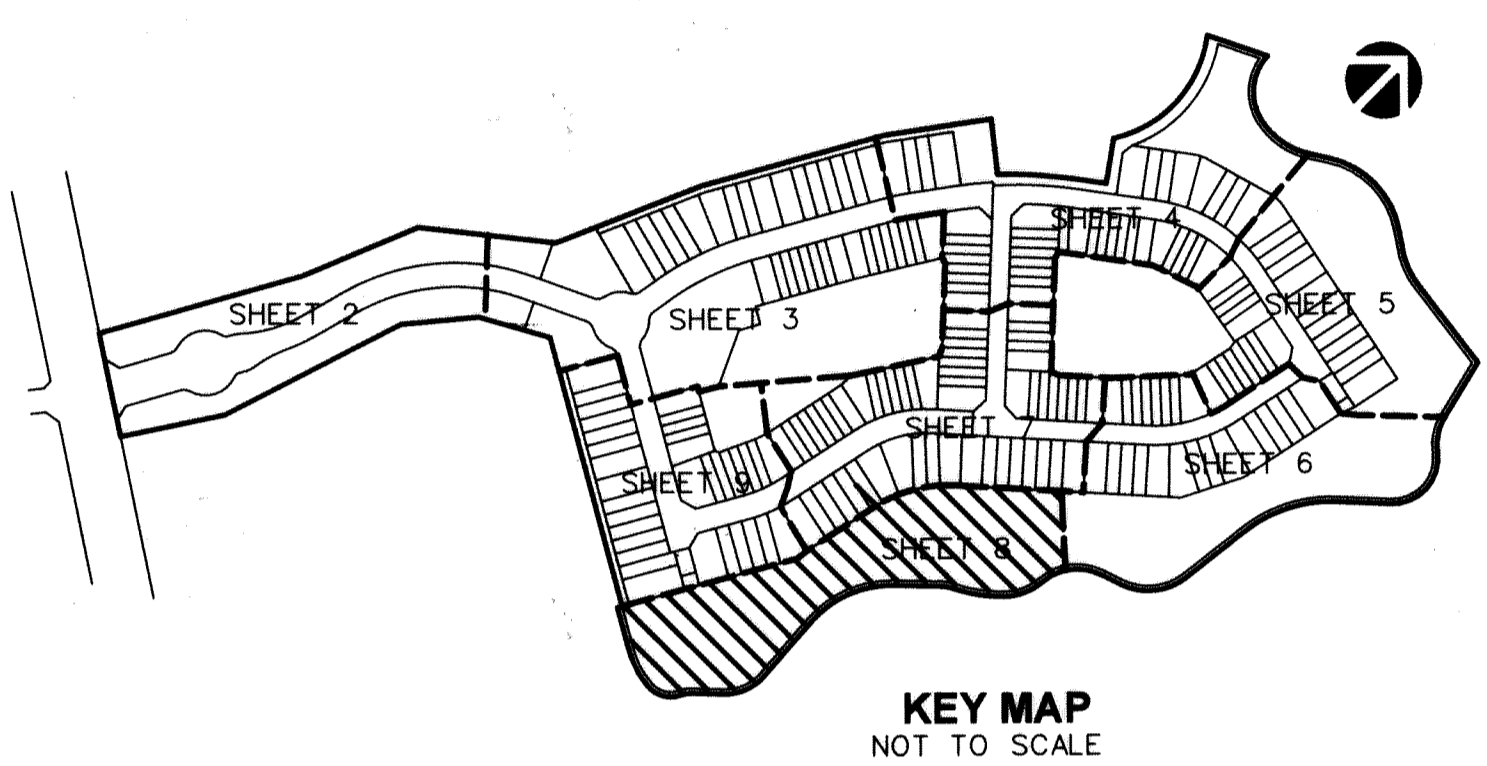


# BOCA DUNES PUD

**A REPLAT OF A PORTION OF TRACTS 90-92, 101-103, BLOCK 81 AND A PORTION OF TRACTS 6-10, 13-16, AND 32, BLOCK 82, ALL OF "PALM BEACH FARMS CO. PLAT NO.3" (P.B. 2, PGS 45-54, P.B.C.R.) AND PORTIONS OF ADJACENT ABANDONED RIGHTS-OF-WAY (O.R.B. 2013, PG. 1451, P.B.C.R.) IN SECTIONS 30 & 31, TOWNSHIP 47 SOUTH, RANGE 42 EAST PALM BEACH COUNTY, FLORIDA.**

# 128

**SHEET 8 OF 9**



- LEGEND:**
- ⊙ SET P.R.M. (UNLESS OTHERWISE NOTED)-4" X 4" CONC. MON. WITH ALUMINUM DISK STAMPED P.R.M. #LB7264
  - PERMANENT CONTROL POINT (NAIL & DISK #LB7264)
  - ⊕ CENTERLINE
- ABBREVIATIONS:**
- B.E. BUFFER EASEMENT
  - CHB CHORD BEARING
  - CONC. CONCRETE
  - COR. CORNER
  - D DELTA (CENTRAL ANGLE)
  - D.E. DRAINAGE EASEMENT
  - D.T. DRIVEWAY TRACT
  - FND. FOUND
  - L. ARCLength
  - L.A.E. LIMITED ACCESS EASEMENT
  - L.B. LICENSED BUSINESS
  - L.E. LANDSCAPE EASEMENT
  - L.M.E. LAKE MAINTENANCE EASEMENT
  - L.M.A.E. LAKE MAINTENANCE ACCESS EASEMENT
  - L.S. LICENSED SURVEYOR
  - L.S.E. LIFT STATION EASEMENT
  - L.W.D.D. LAKE WORTH DRAINAGE DISTRICT
- MONUMENT RECORDS BOOK**
- O.R.B. OFFICIAL RECORDS BOOK
  - N.R. NON-RADIAL
  - P.B. PLAT BOOK
  - P.B.C. PALM BEACH COUNTY
  - P.B.C.R. PALM BEACH COUNTY RECORDS
  - P.B.C.U.E. PALM BEACH COUNTY UTILITY EASEMENT
  - PG. PAGE
  - P.C.P. PERMANENT CONTROL POINT
  - P.O.B. POINT OF BEGINNING
  - P.O.C. POINT OF COMMENCEMENT
  - P.R.M. PERMANENT REFERENCE MONUMENT
  - P.S.M. PROFESSIONAL SURVEYOR & MAPPER
  - P.U.D. PLANNED UNIT DEVELOPMENT
  - R. RADIAL
  - R/W. RIGHT-OF-WAY
  - S.E. SIDEWALK EASEMENT
  - SEC. SECTION
  - S.F. SQUARE FEET
  - U.E. UTILITY EASEMENT