

FIRE-RESCUE STATION #22 & TOWN CENTER PARKWAY SOUTH

BEING A PLAT OF A PORTION OF
SECTION 1, TOWNSHIP 43 SOUTH, RANGE 40 EAST,
CITY OF WESTLAKE, PALM BEACH COUNTY, FLORIDA

105

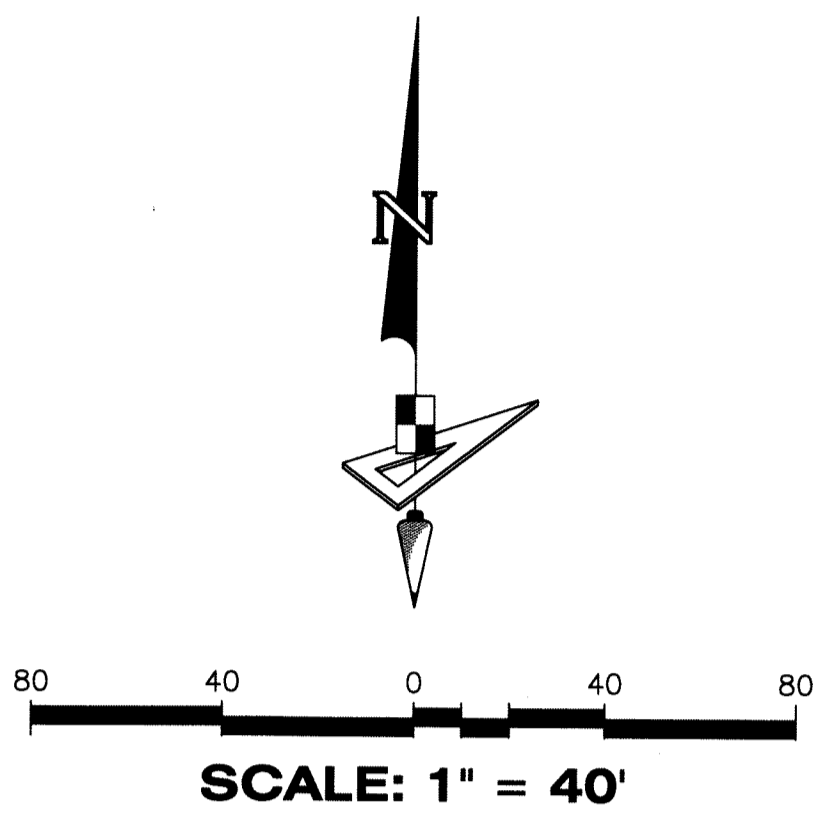
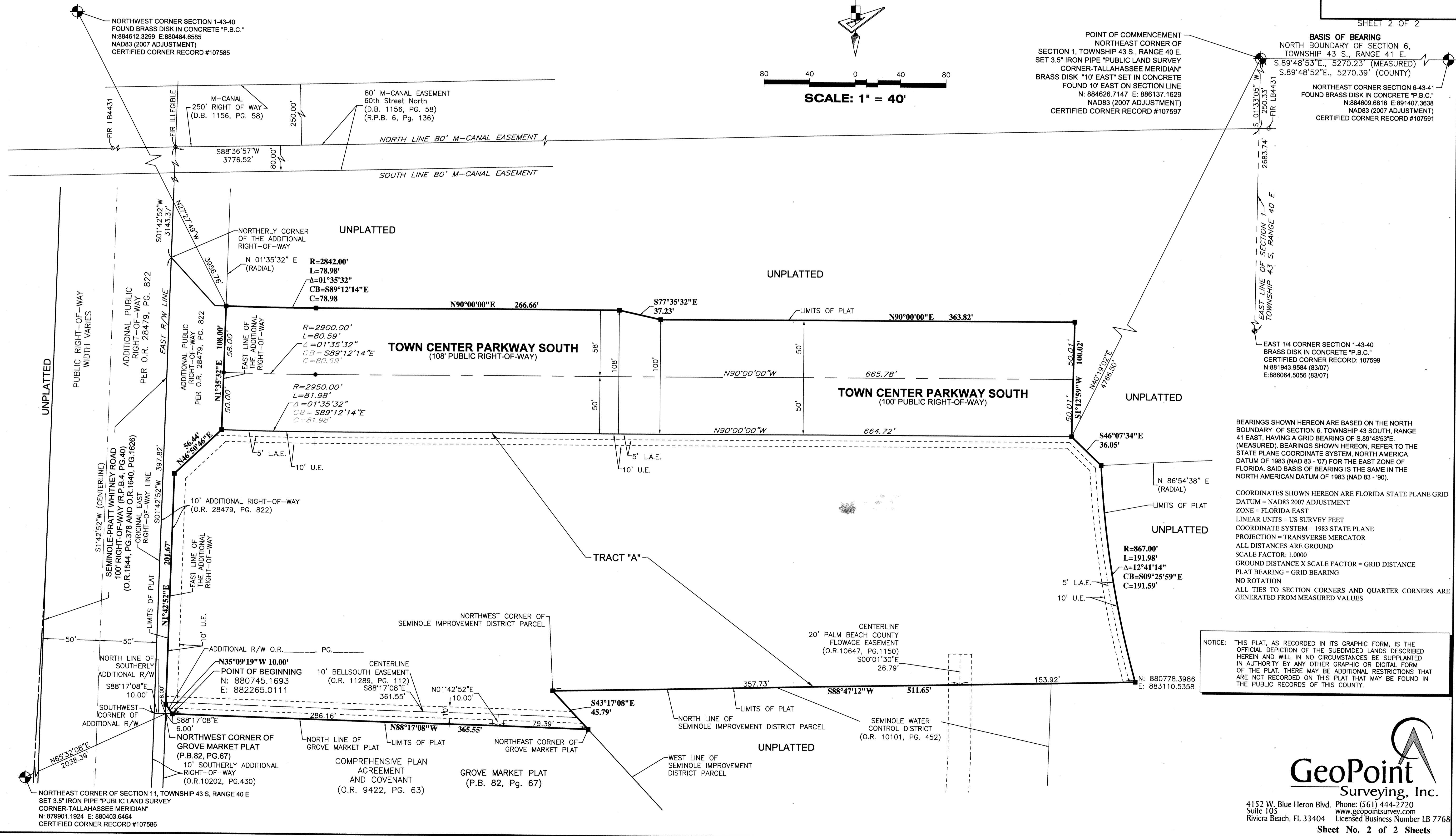
LEGEND

P.B.C. ----- PALM BEACH COUNTY	LB ----- LICENSED BUSINESS
P.B. ----- PLAT BOOK	P.S.M. ----- PROFESSIONAL SURVEYOR AND MAPPER
O.R. ----- OFFICIAL RECORDS BOOK	R.P.B. ----- ROAD PLAT BOOK
PG ----- PAGE	R/W ----- RIGHT-OF-WAY
L.A.E. ----- LIMITED ACCESS EASEMENT	1/4 ----- QUARTER
U.E. ----- UTILITY EASEMENT	NAD ----- NORTH AMERICAN DATUM
R ----- RADIUS	D.B. ----- DEED BOOK
L ----- ARCH LENGTH	L.A.E. ----- LIMITED ACCESS EASEMENT
Δ ----- DELTA ANGLE	U.E. ----- UTILITY EASEMENT
C ----- CHORD LENGTH	
CB ----- CHORD BEARING	

AREA TABLE

1. TRACT "A" = 4.41
2. ROADWAY = 1.78
TOTAL = 6.19

SHEET 2 OF 2



BEARINGS SHOWN HEREON ARE BASED ON THE NORTH BOUNDARY OF SECTION 6, TOWNSHIP 43 SOUTH, RANGE 41 EAST, HAVING A GRID BEARING OF S.89°48'53"E. (MEASURED). BEARINGS SHOWN HEREON, REFER TO THE STATE PLANE COORDINATE SYSTEM, NORTH AMERICA DATUM OF 1983 (NAD 83 - '07) FOR THE EAST ZONE OF FLORIDA. SAID BASIS OF BEARING IS THE SAME IN THE NORTH AMERICAN DATUM OF 1983 (NAD 83 - '90).

COORDINATES SHOWN HEREON ARE FLORIDA STATE PLANE GRID DATUM = NAD83 2007 ADJUSTMENT
ZONE = FLORIDA EAST
LINEAR UNITS = US SURVEY FEET
COORDINATE SYSTEM = 1983 STATE PLANE
PROJECTION = TRANSVERSE MERCATOR
ALL DISTANCES ARE GROUND
SCALE FACTOR: 1.0000
GROUND DISTANCE X SCALE FACTOR = GRID DISTANCE
PLAT BEARING = GRID BEARING
NO ROTATION
ALL TIES TO SECTION CORNERS AND QUARTER CORNERS ARE GENERATED FROM MEASURED VALUES

NOTICE: THIS PLAT, AS RECORDED IN ITS GRAPHIC FORM, IS THE OFFICIAL DEPICTION OF THE SUBDIVIDED LANDS DESCRIBED HEREIN AND WILL IN NO CIRCUMSTANCES BE SUPPLANTED IN AUTHORITY BY ANY OTHER GRAPHIC OR DIGITAL FORM OF THE PLAT. THERE MAY BE ADDITIONAL RESTRICTIONS THAT ARE NOT RECORDED ON THIS PLAT THAT MAY BE FOUND IN THE PUBLIC RECORDS OF THIS COUNTY.

GeoPoint
Surveying, Inc.

4152 W. Blue Heron Blvd. Phone: (561) 444-2720
Suite 105 www.geopointsurvey.com
Riviera Beach, FL 33404 Licensed Business Number LB 7768
Sheet No. 2 of 2 Sheets