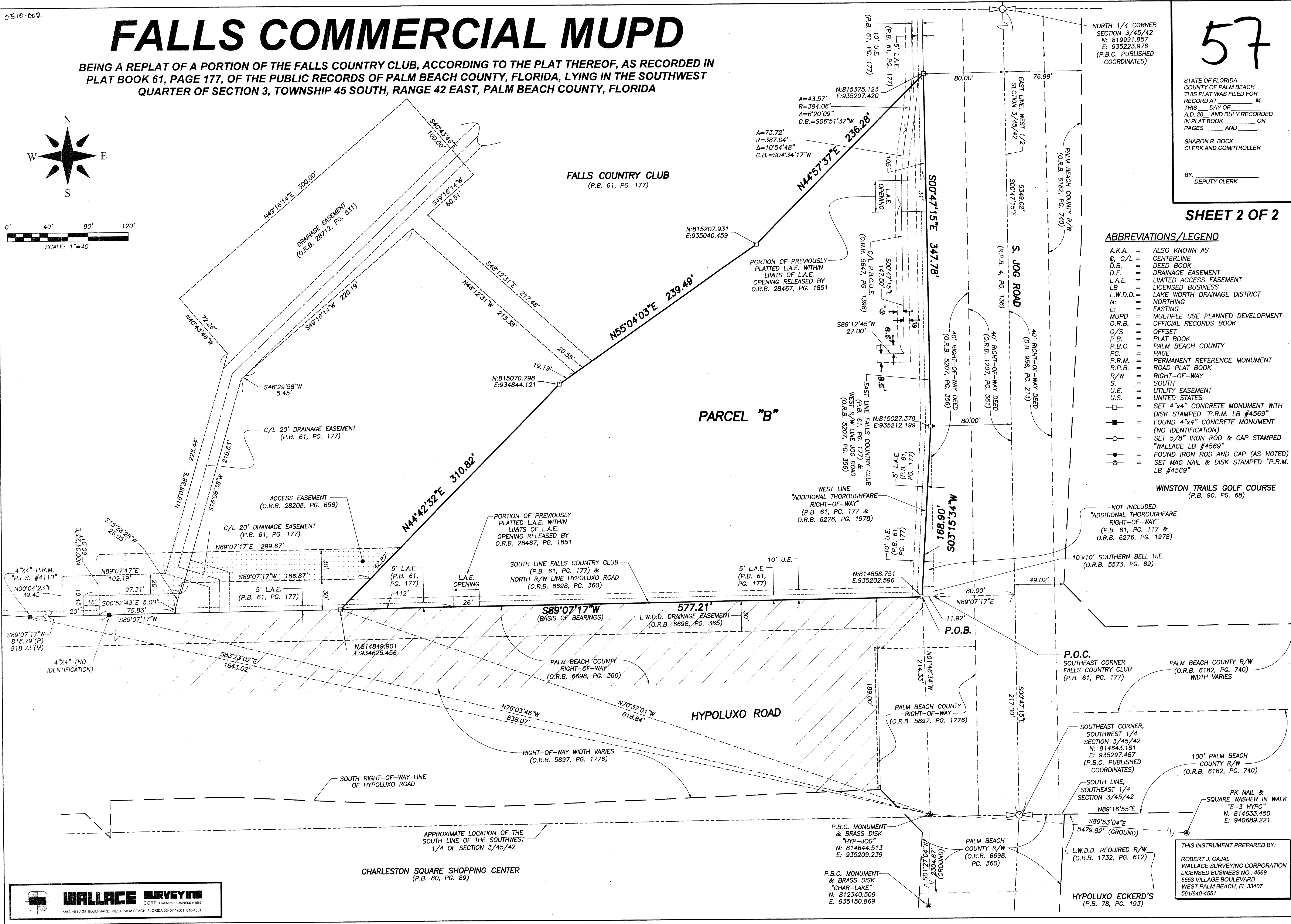
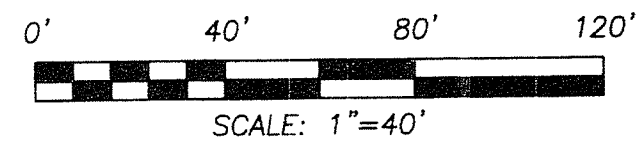
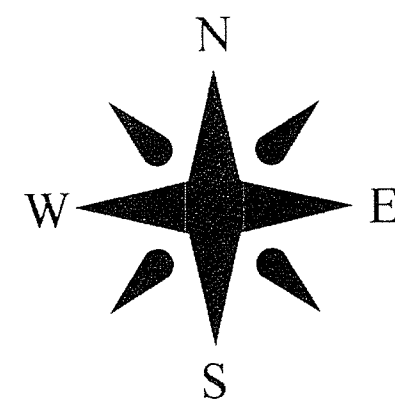


FALLS COMMERCIAL MUPD

BEING A REPLAT OF A PORTION OF THE FALLS COUNTRY CLUB, ACCORDING TO THE PLAT THEREOF, AS RECORDED IN PLAT BOOK 61, PAGE 177, OF THE PUBLIC RECORDS OF PALM BEACH COUNTY, FLORIDA, LYING IN THE SOUTHWEST QUARTER OF SECTION 3, TOWNSHIP 45 SOUTH, RANGE 42 EAST, PALM BEACH COUNTY, FLORIDA



57

STATE OF FLORIDA
COUNTY OF PALM BEACH
THIS PLAT WAS FILED FOR
RECORD AT _____ M.
THIS _____ DAY OF _____
A.D. 20____ AND DULY RECORDED
IN PLAT BOOK _____ ON
PAGES _____ AND _____
SHARON R. BOCK
CLERK AND COMPTROLLER
BY: _____
DEPUTY CLERK

SHEET 2 OF 2

ABBREVIATIONS/LEGEND

A.K.A.	=	ALSO KNOWN AS
C/L	=	CENTERLINE
D.B.	=	DEED BOOK
D.E.	=	DRAINAGE EASEMENT
L.A.E.	=	LIMITED ACCESS EASEMENT
LB	=	LICENSED BUSINESS
L.W.D.D.	=	LAKE WORTH DRAINAGE DISTRICT
N	=	NORTHING
E	=	EASTING
MUPD	=	MULTIPLE USE PLANNED DEVELOPMENT
O.R.B.	=	OFFICIAL RECORDS BOOK
O/S	=	OFFSET
P.B.	=	PLAT BOOK
P.B.C.	=	PALM BEACH COUNTY
PG.	=	PAGE
P.R.M.	=	PERMANENT REFERENCE MONUMENT
R.P.B.	=	ROAD PLAT BOOK
R/W	=	RIGHT-OF-WAY
S	=	SOUTH
U.E.	=	UTILITY EASEMENT
U.S.	=	UNITED STATES
□	=	SET 4"x4" CONCRETE MONUMENT WITH DISK STAMPED "P.R.M. LB #4569"
■	=	FOUND 4"x4" CONCRETE MONUMENT (NO IDENTIFICATION)
○	=	SET 5/8" IRON ROD & CAP STAMPED "WALLACE LB #4569"
●	=	FOUND IRON ROD AND CAP (AS NOTED)
⊙	=	SET MAG NAIL & DISK STAMPED "P.R.M. LB #4569"

WINSTON TRAILS GOLF COURSE
(P.B. 90, PG. 68)

NOT INCLUDED
"ADDITIONAL THOROUGHFARE RIGHT-OF-WAY"
(P.B. 61, PG. 117 & O.R.B. 6276, PG. 197B)

10'x10' SOUTHERN BELL U.E.
(O.R.B. 5573, PG. 89)



THIS INSTRUMENT PREPARED BY:
ROBERT J. CAJAL
WALLACE SURVEYING CORPORATION
LICENSED BUSINESS NO.: 4569
5553 VILLAGE BOULEVARD
WEST PALM BEACH, FL 33407
561/640-4551