

# JUNO ISLES PLAT NO.1, LOT 13, BLOCK 1 - REPLAT

BEING A REPLAT OF LOT 13, BLOCK 1, AND A PORTION OF THE CANAL,  
ACCORDING TO PLAT NO.1 JUNO ISLES, RECORDED IN PLAT BOOK 27, PAGE 141,  
LYING IN THE NORTHEAST QUARTER (N.E. 1/4) OF SECTION 32,  
TOWNSHIP 41 SOUTH, RANGE 43 EAST, PALM BEACH COUNTY, FLORIDA,

SHEET 2 OF 2

CLERK'S CERTIFICATE

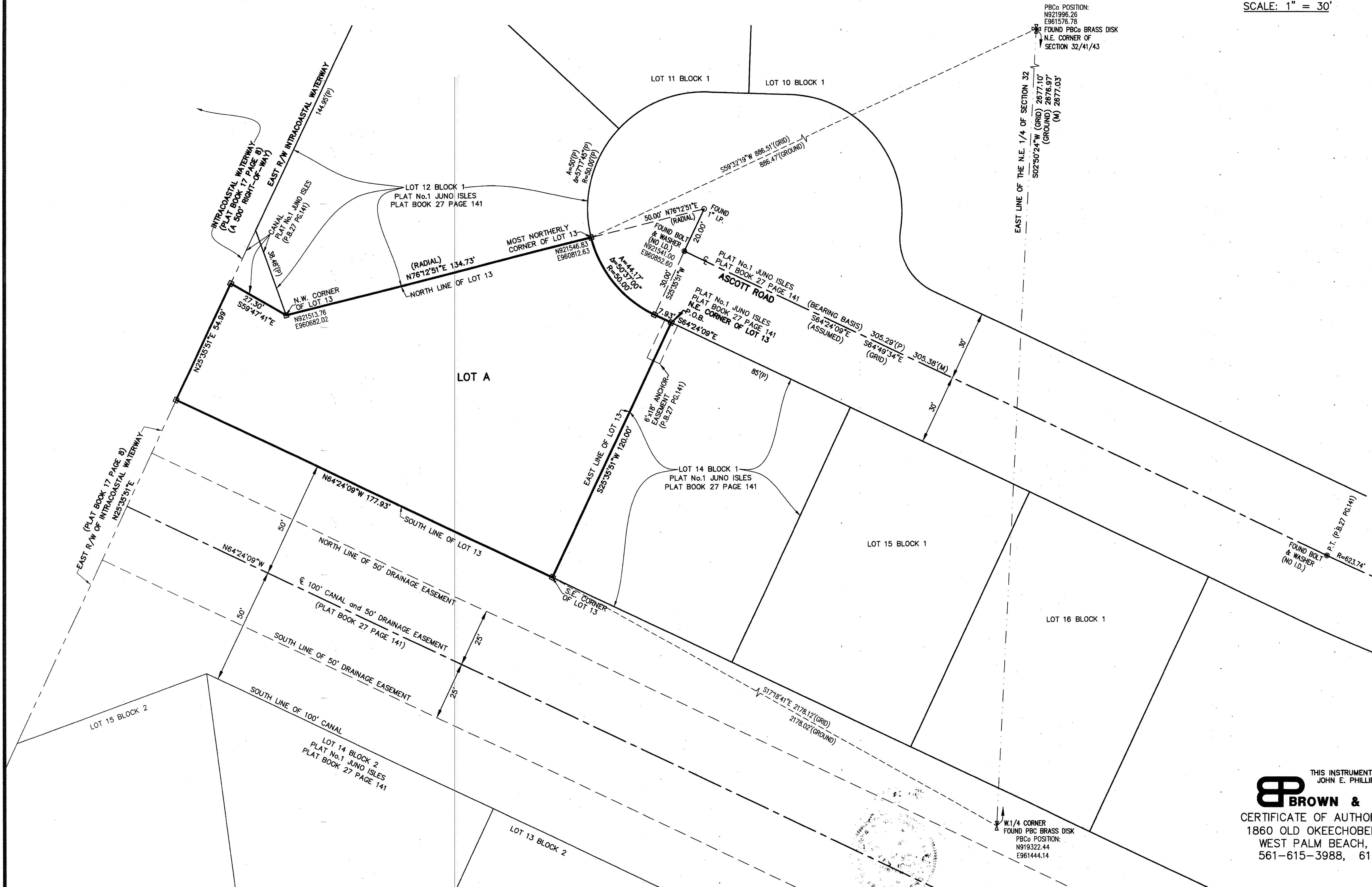
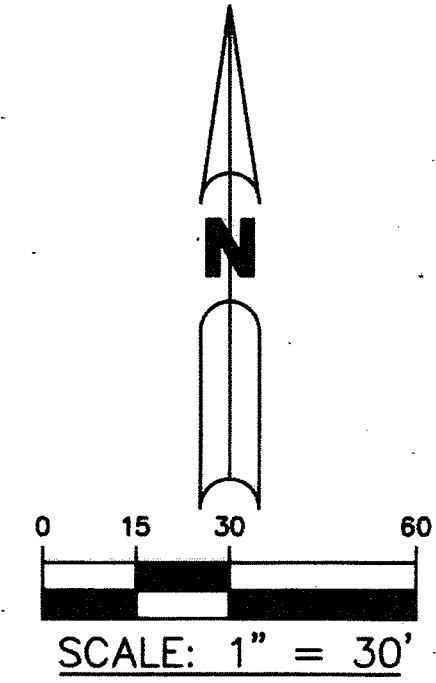
44

STATE OF FLORIDA  
COUNTY OF PALM BEACH

THIS PLAT WAS FILED FOR  
RECORD AT \_\_\_\_\_ M.  
THIS \_\_\_\_\_ DAY OF \_\_\_\_\_  
A.D. 201\_\_\_\_ AND DULY  
RECORDED IN PLAT BOOK \_\_\_\_\_  
ON PAGES \_\_\_\_\_ AND \_\_\_\_\_

SHARON R. BOCK  
CLERK AND COMPTROLLER

BY: \_\_\_\_\_  
DEPUTY CLERK



PBC POSITION:  
N921996.26  
E961576.78  
FOUND PBC BRASS DISK  
N.E. CORNER OF  
SECTION 32/41/43

EAST LINE OF THE N.E. 1/4 OF SECTION 32  
S02°50'24"W (GRID) 2677.10'  
(GROUND) 2676.97'  
(M) 2677.03'

THIS INSTRUMENT WAS PREPARED BY  
JOHN E. PHILLIPS III, P.S.M. 4826  
**BROWN & PHILLIPS, INC.**  
CERTIFICATE OF AUTHORIZATION # LB 6473  
1860 OLD OKEECHOBEE RD., SUITE 509  
WEST PALM BEACH, FLORIDA 33409  
561-615-3988, 615-3986 FAX