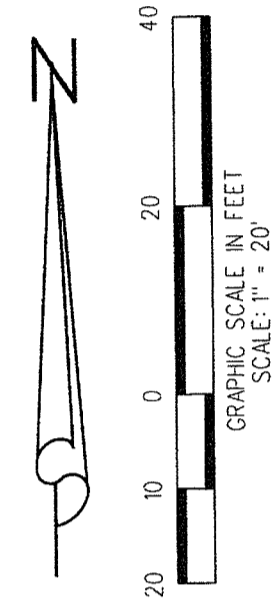
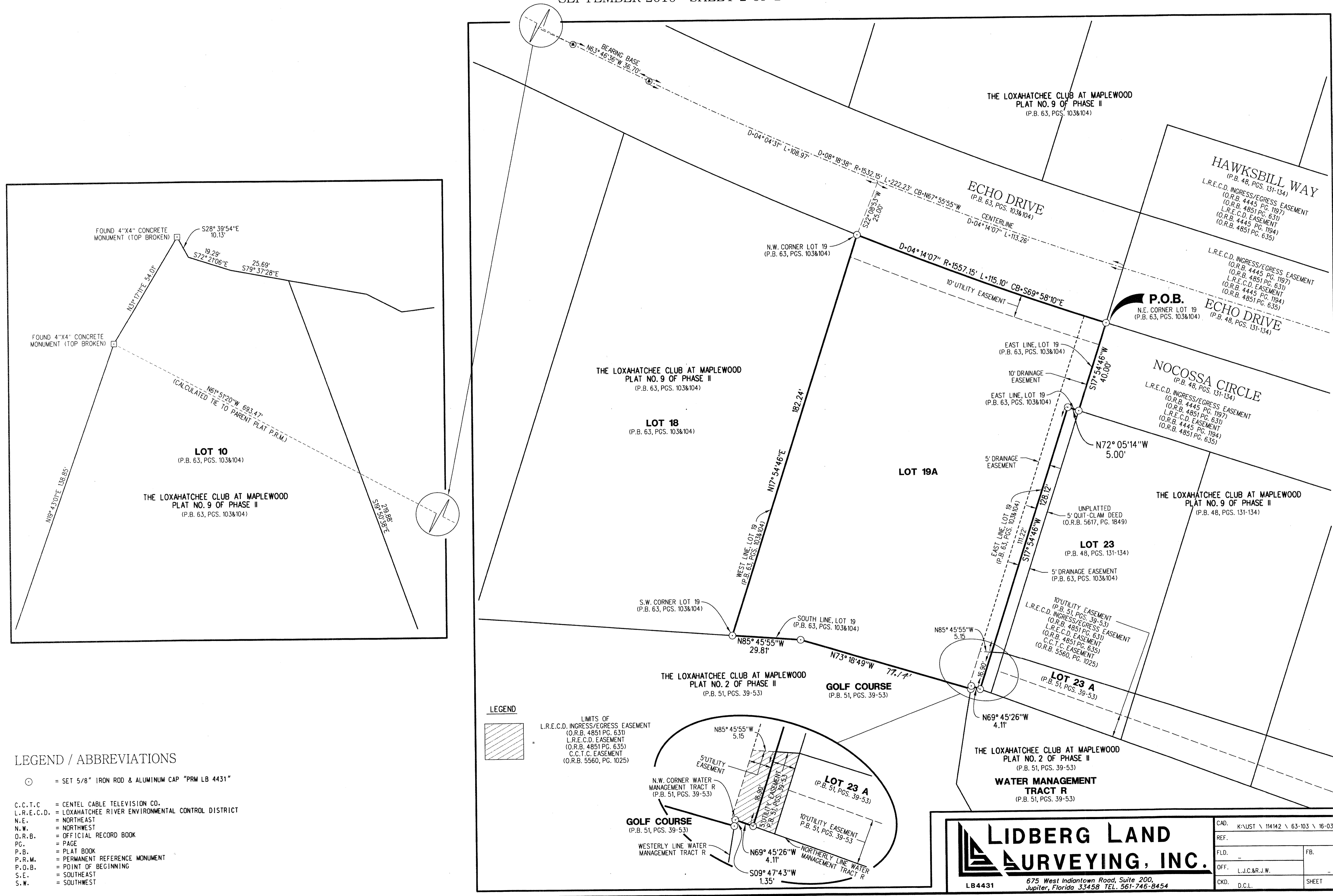


LOXAHATCHEE CLUB AT MAPLEWOOD PLAT NO. 24 OF PHASE II - REPLAT

BEING A REPLAT OF ALL OF LOT 19 AS SHOWN ON THE PLAT OF THE LOXAHATCHEE CLUB AT MAPLEWOOD PLAT NO. 9 OF PHASE II, AS RECORDED IN PLAT BOOK 63, PAGES 103 AND 104, PUBLIC RECORDS OF PALM BEACH COUNTY, FLORIDA, AND BEING A PORTION OF THE GOLF COURSE AS SHOWN ON THE PLAT OF THE LOXAHATCHEE CLUB AT MAPLEWOOD PLAT NO. 2 OF PHASE II, AS RECORDED IN PLAT BOOK 51, PAGES 39 THROUGH 53, PUBLIC RECORDS OF PALM BEACH COUNTY, FLORIDA, LYING IN SECTION 11, TOWNSHIP 41 SOUTH, RANGE 42 EAST, TOWN OF JUPITER, PALM BEACH COUNTY, FLORIDA, SEPTEMBER 2016 SHEET 2 OF 2

171



LIDBERG LAND SURVEYING, INC.
 675 West Indian Town Road, Suite 200, Jupiter, Florida 33458 TEL. 561-746-8454
 LB4431

CAD:	K:\JUST \ 114142 \ 63-103 \ 16-034-306 \ 16-034-306.DGN
REF:	
FLD:	FB. PG.
OFF:	L.J.C.&R.J.W. DATE: JULY 2016
CKD:	D.C.L. SHEET 2 OF 2 DWG: D16-034P