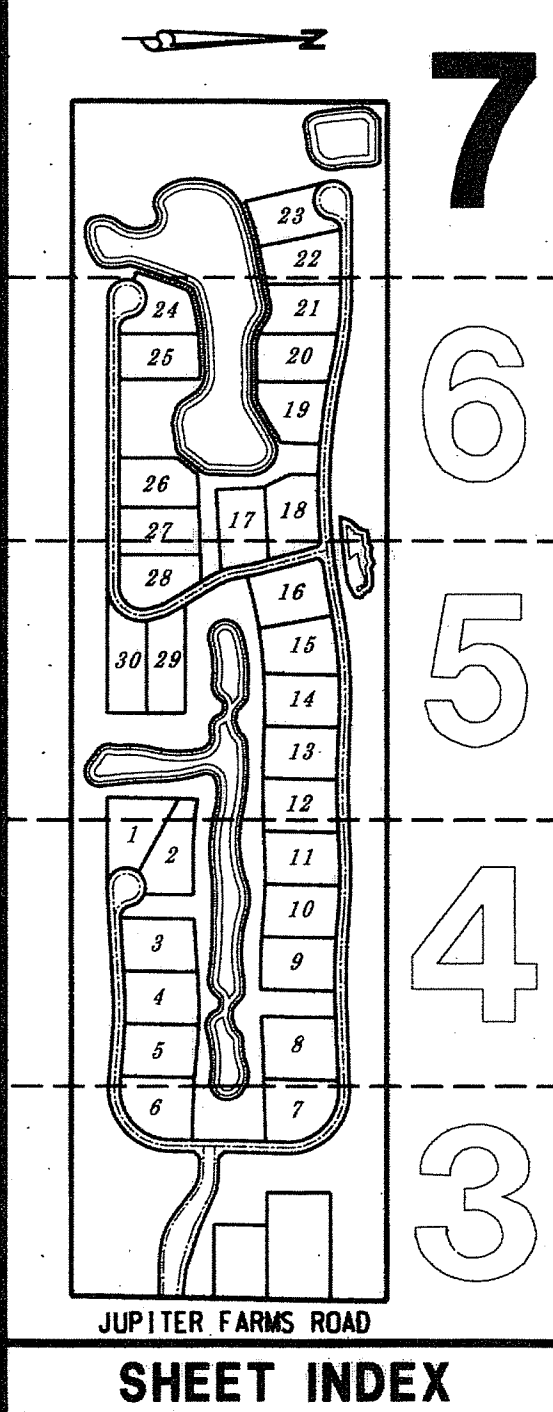
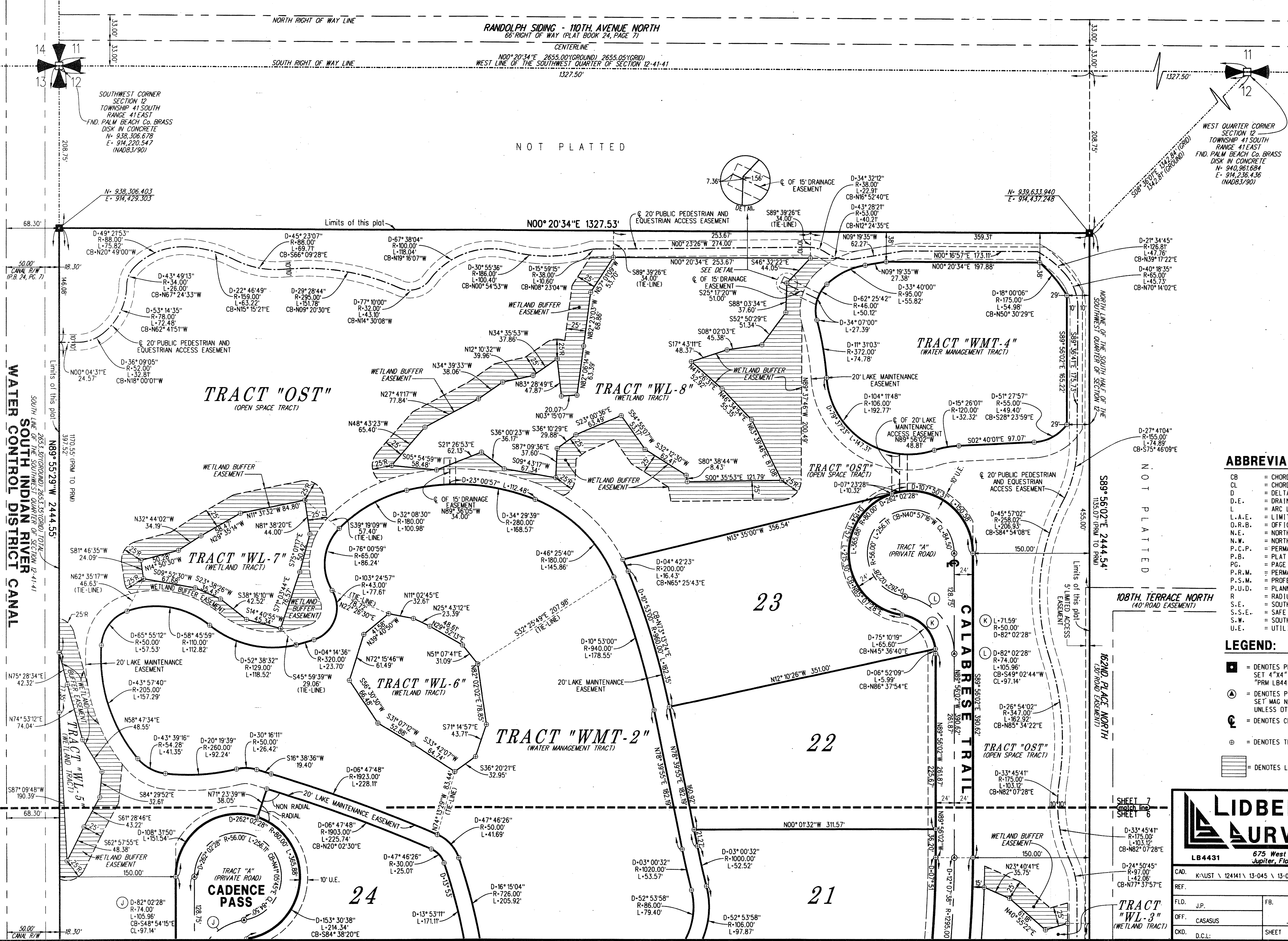
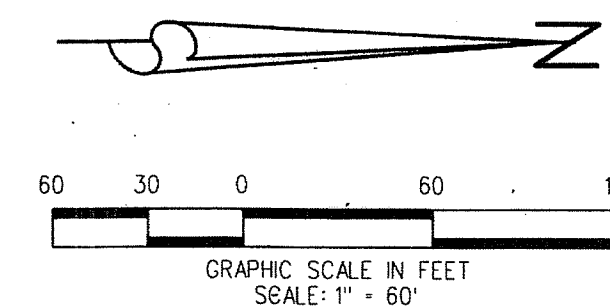


# REYNOLDS RANCH, A P.U.D.

BEING A PORTION OF SECTION 12, TOWNSHIP 41 SOUTH, RANGE 41 EAST, PALM BEACH COUNTY, FLORIDA

JUNE 2016 SHEET 7 OF 7



- ABBREVIATIONS:**
- CB = CHORD BEARING
  - CL = CHORD LENGTH
  - D = DELTA
  - D.E. = DRAINAGE EASEMENT
  - L = ARC LENGTH
  - L.A.E. = LIMITED ACCESS EASEMENT
  - O.R.B. = OFFICIAL RECORD BOOK
  - N.E. = NORTHEAST
  - N.W. = NORTHWEST
  - P.C.P. = PERMANENT CONTROL POINT
  - P.B. = PLAT BOOK
  - PG. = PAGE
  - P.R.M. = PERMANENT REFERENCE MONUMENT
  - P.S.M. = PROFESSIONAL SURVEYOR AND MAPPER
  - P.U.D. = PLANNED UNIT DEVELOPMENT
  - R = RADIUS
  - S.E. = SOUTHEAST
  - S.S.E. = SAFE SIGHT EASEMENT
  - S.W. = SOUTHWEST
  - U.E. = UTILITY EASEMENT
- LEGEND:**
- = DENOTES PERMANENT REFERENCE MONUMENT (P.R.M.) SET 4"x4" CONCRETE MONUMENT WITH DISK STAMPED "PRM LB4431" UNLESS OTHERWISE NOTED
  - ⊙ = DENOTES PERMANENT CONTROL POINT (P.C.P.) SET MAG NAIL & DISK STAMPED "PCP LB4431" UNLESS OTHERWISE NOTED
  - ⊕ = DENOTES CENTERLINE OF RIGHT OF WAY
  - ⊗ = DENOTES TRACT OR LOT CORNER
  - ▨ = DENOTES LIMITS OF WETLAND BUFFER

**LIDBERG LAND SURVEYING, INC.**  
 LB4431 675 West Indian Town Road, Suite 200, Jupiter, Florida 33458 TEL. 561-746-8454

CAD. K:\UST\124141\13-045\13-045A-306\13-045A-306.DGN			
REF.			
FLD. J.P.	FB.	PG.	JOB 13-045A-306
OFF. CASASUS			DATE JUNE 2016
CKD. D.C.L.	SHEET 7	OF 7	DWG. D13-045P

WATER CONTROL DISTRICT CANAL SOUTH INDIAN RIVER NOT PLATTED

SHEET 7 MATCH LINE SHEET 6

108TH TERRACE NORTH (40' ROAD EASEMENT)

162ND PLACE NORTH (30' ROAD EASEMENT)

162ND PLACE NORTH (30' ROAD EASEMENT)

162ND PLACE NORTH (30' ROAD EASEMENT)

162ND PLACE NORTH (30' ROAD EASEMENT)

162ND PLACE NORTH (30' ROAD EASEMENT)

162ND PLACE NORTH (30' ROAD EASEMENT)