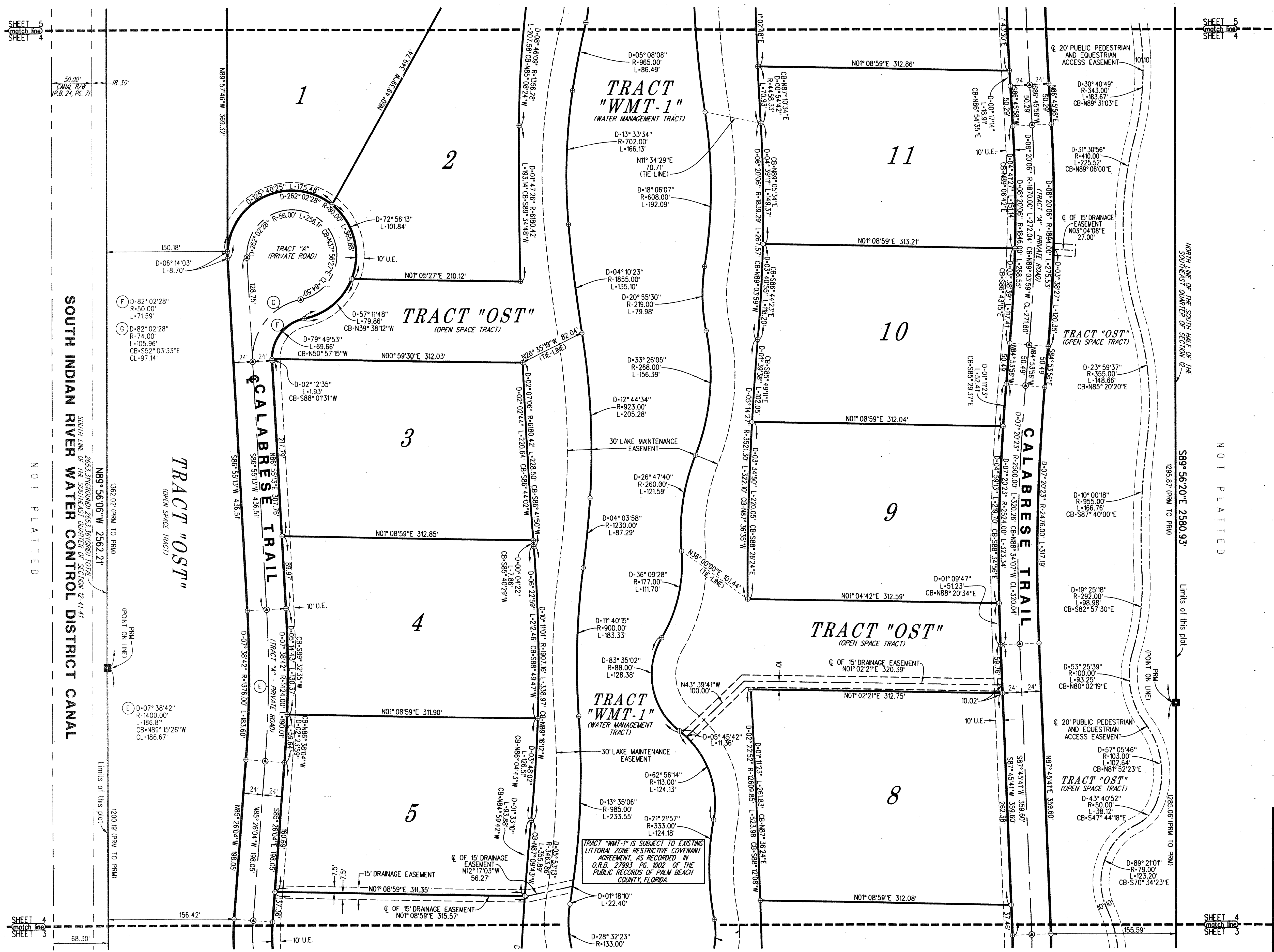
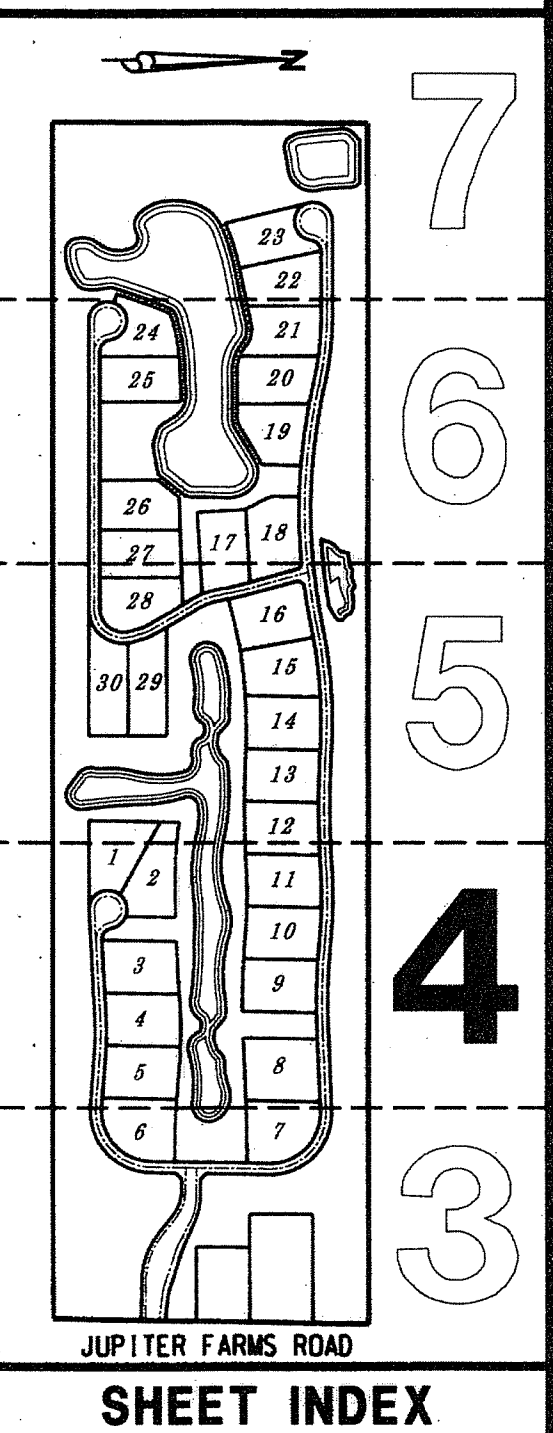
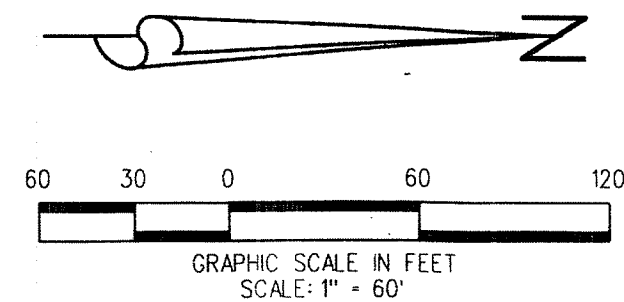


REYNOLDS RANCH, A P.U.D.

BEING A PORTION OF SECTION 12, TOWNSHIP 41 SOUTH, RANGE 41 EAST,
PALM BEACH COUNTY, FLORIDA

JUNE 2016 SHEET 4 OF 7



ABBREVIATIONS:

- CB = CHORD BEARING
- CL = CHORD LENGTH
- D = DELTA
- D.E. = DRAINAGE EASEMENT
- L = ARC LENGTH
- L.A.E. = LIMITED ACCESS EASEMENT
- O.R.B. = OFFICIAL RECORD BOOK
- N.E. = NORTHEAST
- N.W. = NORTHWEST
- P.C.P. = PERMANENT CONTROL POINT
- P.B. = PLAT BOOK
- PG. = PAGE
- P.R.M. = PERMANENT REFERENCE MONUMENT
- P.S.M. = PROFESSIONAL SURVEYOR AND MAPPER
- P.U.D. = PLANNED UNIT DEVELOPMENT
- R = RADIUS
- S.E. = SOUTHEAST
- S.S.E. = SAFE SIGHT EASEMENT
- S.W. = SOUTHWEST
- U.E. = UTILITY EASEMENT

LEGEND:

- = DENOTES PERMANENT REFERENCE MONUMENT (P.R.M.) SET 4"x4" CONCRETE MONUMENT WITH DISK STAMPED "PRM LB4431" UNLESS OTHERWISE NOTED
- ⊙ = DENOTES PERMANENT CONTROL POINT (P.C.P.) SET MAG NAIL & DISK STAMPED "PCP LB4431" UNLESS OTHERWISE NOTED
- ⊕ = DENOTES CENTERLINE OF RIGHT OF WAY
- ⊕ = DENOTES TRACT OR LOT CORNER
- ▨ = DENOTES LIMITS OF WETLAND BUFFER

LIDBERG LAND SURVEYING, INC.
 LB4431 675 West Indiantown Road, Suite 200, Jupiter, Florida 33458 TEL: 561-746-8454

CAD. K:\UST \ 124141 \ 13-045 \ 13-045A-306 \ 13-045A-306.DGN	REF.
FLO. J.P.	FB. PG. JOB 13-045A-306
OFF. CASASUS	DATE JUNE 2016
CKD. D.C.L.	SHEET 4 OF 7 DWG. D13-045P

SOUTH INDIAN RIVER WATER CONTROL DISTRICT CANAL

NOT PLATTED

NOT PLATTED

TRACT "WMT-1" IS SUBJECT TO EXISTING LITTORAL ZONE RESTRICTIVE COVENANT AGREEMENT, AS RECORDED IN O.R.B. 27893 PG. 802 OF THE PUBLIC RECORDS OF PALM BEACH COUNTY, FLORIDA.