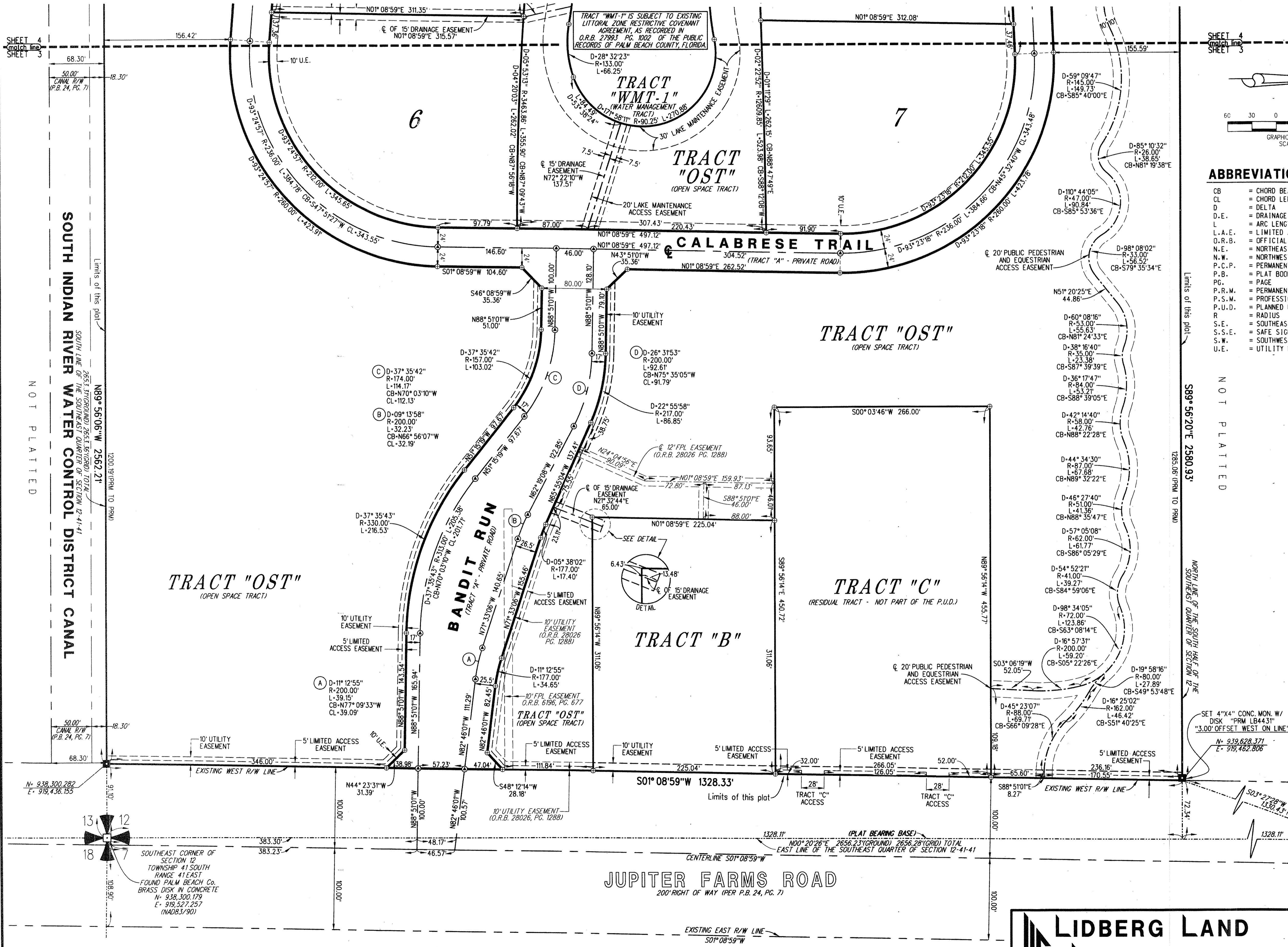


# REYNOLDS RANCH, A P.U.D.

BEING A PORTION OF SECTION 12, TOWNSHIP 41 SOUTH, RANGE 41 EAST, PALM BEACH COUNTY, FLORIDA

JUNE 2016 SHEET 3 OF 7

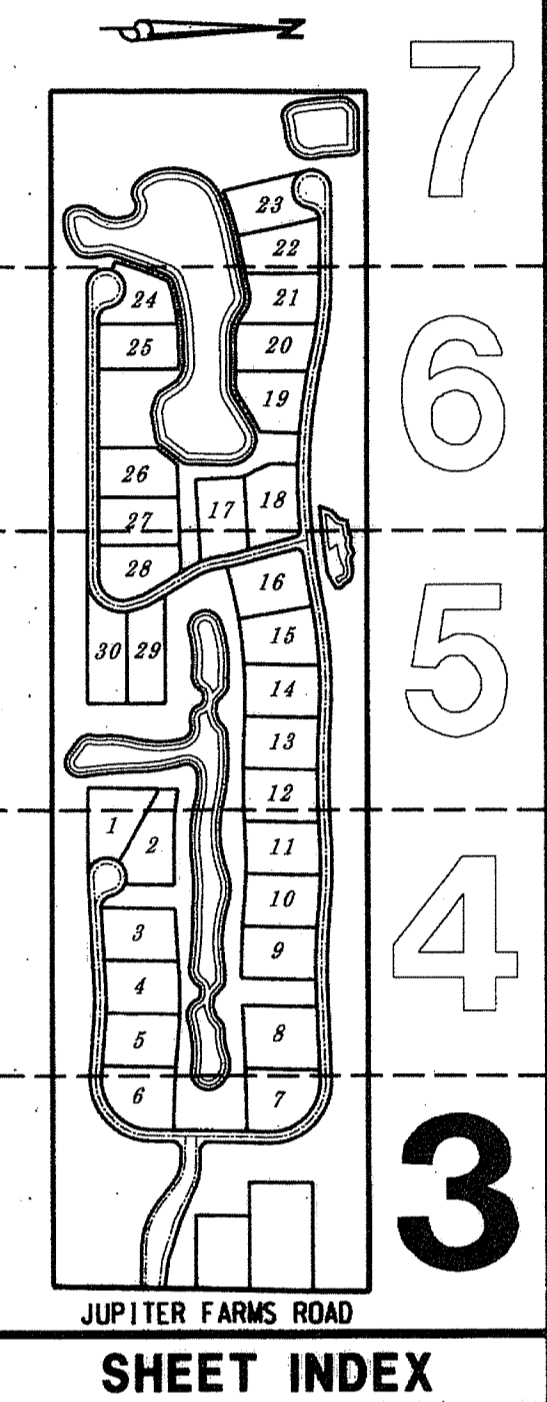


### ABBREVIATIONS:

- CB = CHORD BEARING
- CL = CHORD LENGTH
- D = DELTA
- D.E. = DRAINAGE EASEMENT
- L = ARC LENGTH
- L.A.E. = LIMITED ACCESS EASEMENT
- O.R.B. = OFFICIAL RECORD BOOK
- N.E. = NORTHEAST
- N.W. = NORTHWEST
- P.C.P. = PERMANENT CONTROL POINT
- P.B. = PLAT BOOK
- PG. = PAGE
- P.R.M. = PERMANENT REFERENCE MONUMENT
- P.S.M. = PROFESSIONAL SURVEYOR AND MAPPER
- P.U.D. = PLANNED UNIT DEVELOPMENT
- R = RADIUS
- S.E. = SOUTHEAST
- S.S.E. = SAFE SIGHT EASEMENT
- S.W. = SOUTHWEST
- U.E. = UTILITY EASEMENT

### LEGEND:

- = DENOTES PERMANENT REFERENCE MONUMENT (P.R.M.) SET 4"x4" CONCRETE MONUMENT WITH DISK STAMPED "PRM LB4431" UNLESS OTHERWISE NOTED
- ⊙ = DENOTES PERMANENT CONTROL POINT (P.C.P.) SET MAG NAIL & DISK STAMPED "PCP LB4431" UNLESS OTHERWISE NOTED
- ℄ = DENOTES CENTERLINE OF RIGHT OF WAY
- ⊕ = DENOTES TRACT OR LOT CORNER
- ▨ = DENOTES LIMITS OF WETLAND BUFFER



## LIDBERG LAND SURVEYING, INC.

675 West Indiantown Road, Suite 200,  
Jupiter, Florida 33458 TEL: 561-746-8454

CAD. K:\UST \ 124141 \ 13-045 \ 13-045A-306 \ 13-045A-306.DGN	REF.		
F.L.D. J.P.	FB. PG.	JOB 13-045A-306	
OFF. CASASUS		DATE JUNE 2016	
CKD. D.C.L.	SHEET 3 OF 7	DWG. 013-045P	