

SEAGATE VILLAS

BEING A REPLAT OF LOT 3, BLOCK 13, SEAGATE SECTION "A" PLAT BOOK 20, PAGE 48 (P.R.P.B.CO.) BEING IN SECTION 21, TOWNSHIP 46 SOUTH, RANGE 43 EAST, CITY OF DELRAY BEACH, PALM BEACH COUNTY, FLORIDA.

MAY, 2016
SHEET 2 OF 2

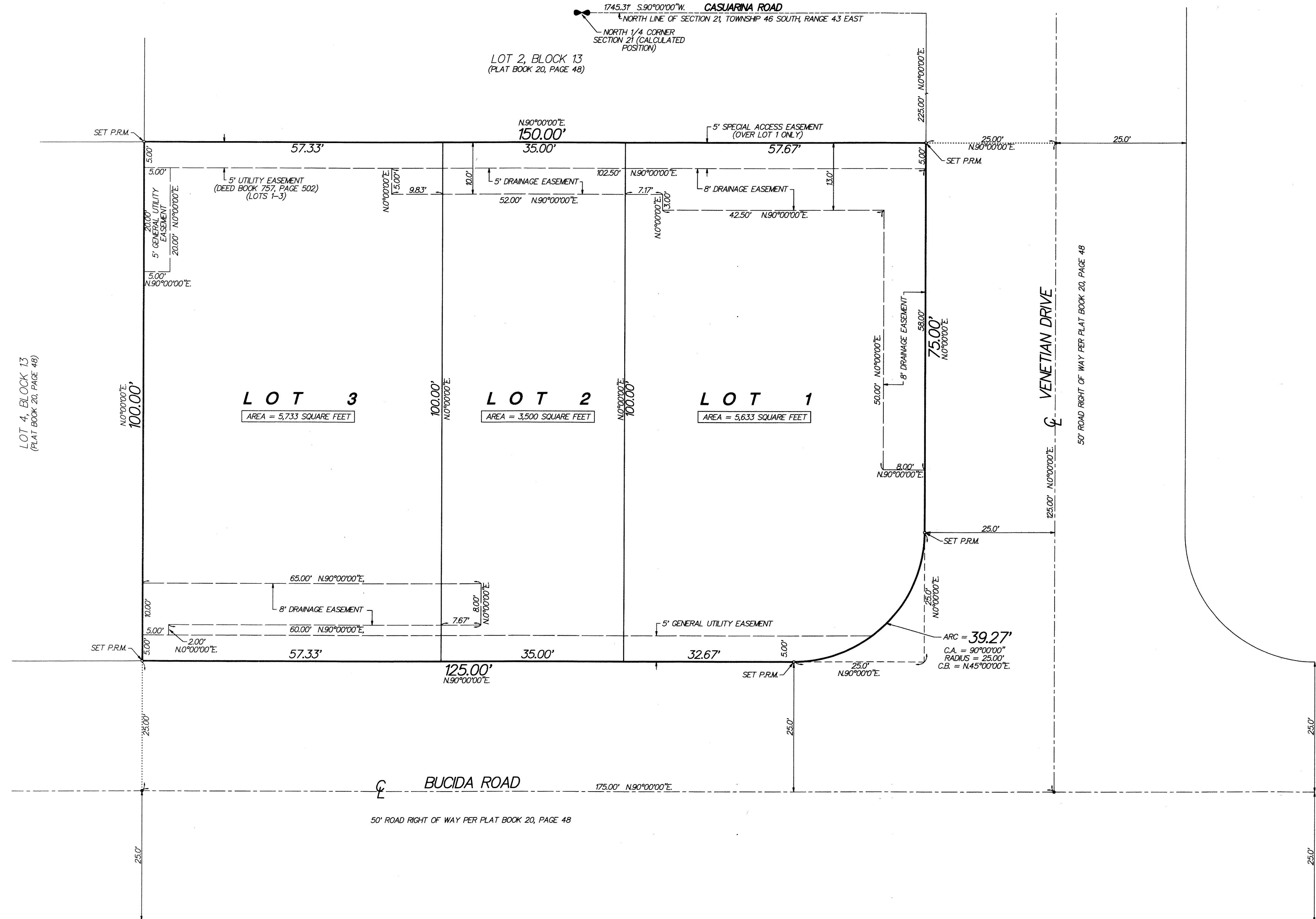
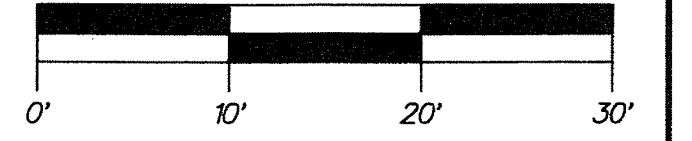
THIS INSTRUMENT WAS PREPARED BY PAUL D. ENGLE, IN THE OFFICE OF O'BRIEN, SUTER & O'BRIEN, INC., 955 N.W. 17TH AVENUE, SUITE K-1, DELRAY BEACH, FLORIDA 33445. (561) 276-4501

119

COUNTY OF PALM BEACH
STATE OF FLORIDA

THIS PLAT WAS FILED FOR RECORD AT _____
THIS _____ DAY OF _____
20____, AND DULY RECORDED IN PLAT BOOK NO. _____
ON PAGE _____
SHARON R. BOCK, CLERK OF CIRCUIT COURT
BY _____ D.C.

SCALE: 1" = 10'



LEGEND:

- CL = CENTERLINE
- P.R.M. = 4" X 4" CONCRETE MONUMENT STAMPED "PRM LB353"
- P.R.P.B.CO. = PUBLIC RECORDS OF PALM BEACH COUNTY
- C.A. = CENTRAL ANGLE
- C.B. = CHORD BEARING
- THE CENTERLINE OF BUCIDA ROAD IS ASSUMED TO BEAR N.90°00'00"E.