

PALM BEACH PARK OF COMMERCE P.I.P.D. PARCEL 4

BEING A REPLAT OF PARCEL 4, PALM BEACH PARK OF COMMERCE P.I.P.D., PLAT NO. 1, ACCORDING TO THE PLAT THEREOF, AS RECORDED IN PLAT BOOK 56, PAGES 172 THROUGH 176 OF THE PUBLIC RECORDS OF PALM BEACH COUNTY, FLORIDA, LYING IN SECTION 18, TOWNSHIP 41 SOUTH, RANGE 41 EAST, PALM BEACH COUNTY, FLORIDA

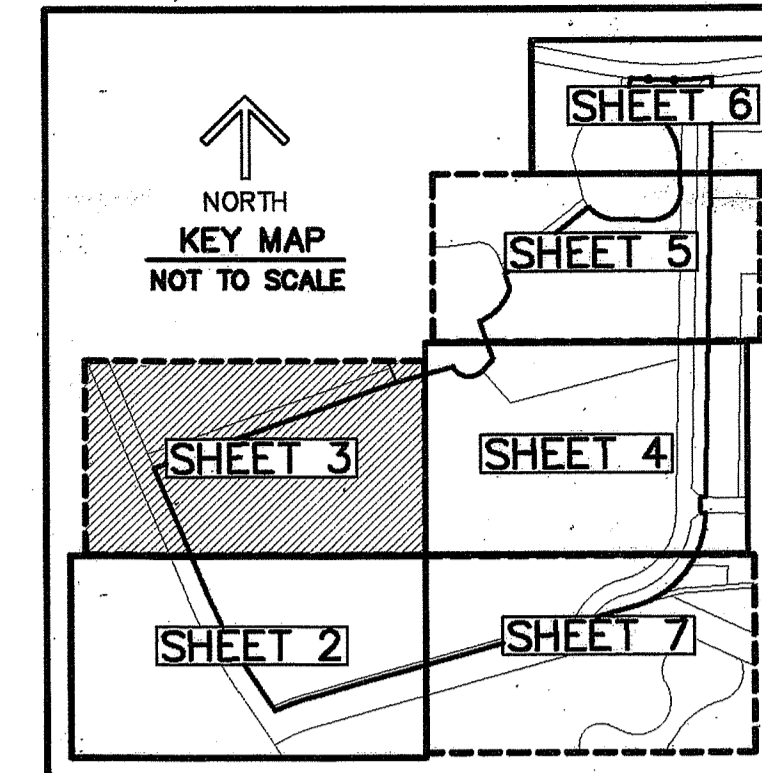
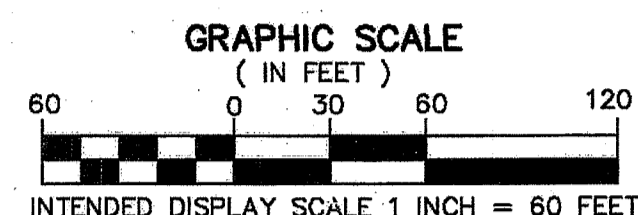
THIS INSTRUMENT PREPARED BY
DAVID P. LINDLEY
OF
CAULFIELD and WHEELER, INC.
SURVEYORS - ENGINEERS - PLANNERS
7900 GLADES ROAD, SUITE 100
BOCA RATON, FLORIDA 33434 - (561)392-1991

LEGEND ABBREVIATIONS

- Δ - DELTA (CENTRAL ANGLE)
- L - ARC LENGTH
- R - RADIUS
- AC - ACRES
- CB - CHORD BEARING
- CD - CHORD DISTANCE
- FPL - FLORIDA POWER & LIGHT CO.
- CL - CENTERLINE
- LB - LICENSED BUSINESS
- O.R.B. - OFFICIAL RECORD BOOK
- SF - SQUARE FEET
- N - NORTHING
- E - EASTING
- UE - UTILITY EASEMENT
- WMME - WATER MANAGEMENT MAINTENANCE EASEMENT
- PCP - DENOTES PERMANENT CONTROL POINT
- PRM - INDICATES SET 4" X 4" X 24" CONCRETE PERMANENT REFERENCE MONUMENT WITH ALUMINUM DISK STAMPED LB3591 UNLESS OTHERWISE NOTED.

NOTES

COORDINATES, BEARINGS AND DISTANCES
 COORDINATES SHOWN ARE GRID
 DATUM = NAD 83 1990 ADJUSTMENT
 ZONE = FLORIDA EAST
 LINEAR UNIT = US SURVEY FEET
 COORDINATE SYSTEM 1983 STATE PLANE
 TRANSVERSE MERCATOR PROJECTION
 ALL DISTANCES ARE GROUND
 SCALE FACTOR = 1.000004048
 GROUND DISTANCE X SCALE FACTOR = GRID DISTANCE
 BEARINGS AS SHOWN HEREON ARE GRID DATUM,
 NAD 83 1990 ADJUSTMENT, FLORIDA EAST ZONE.

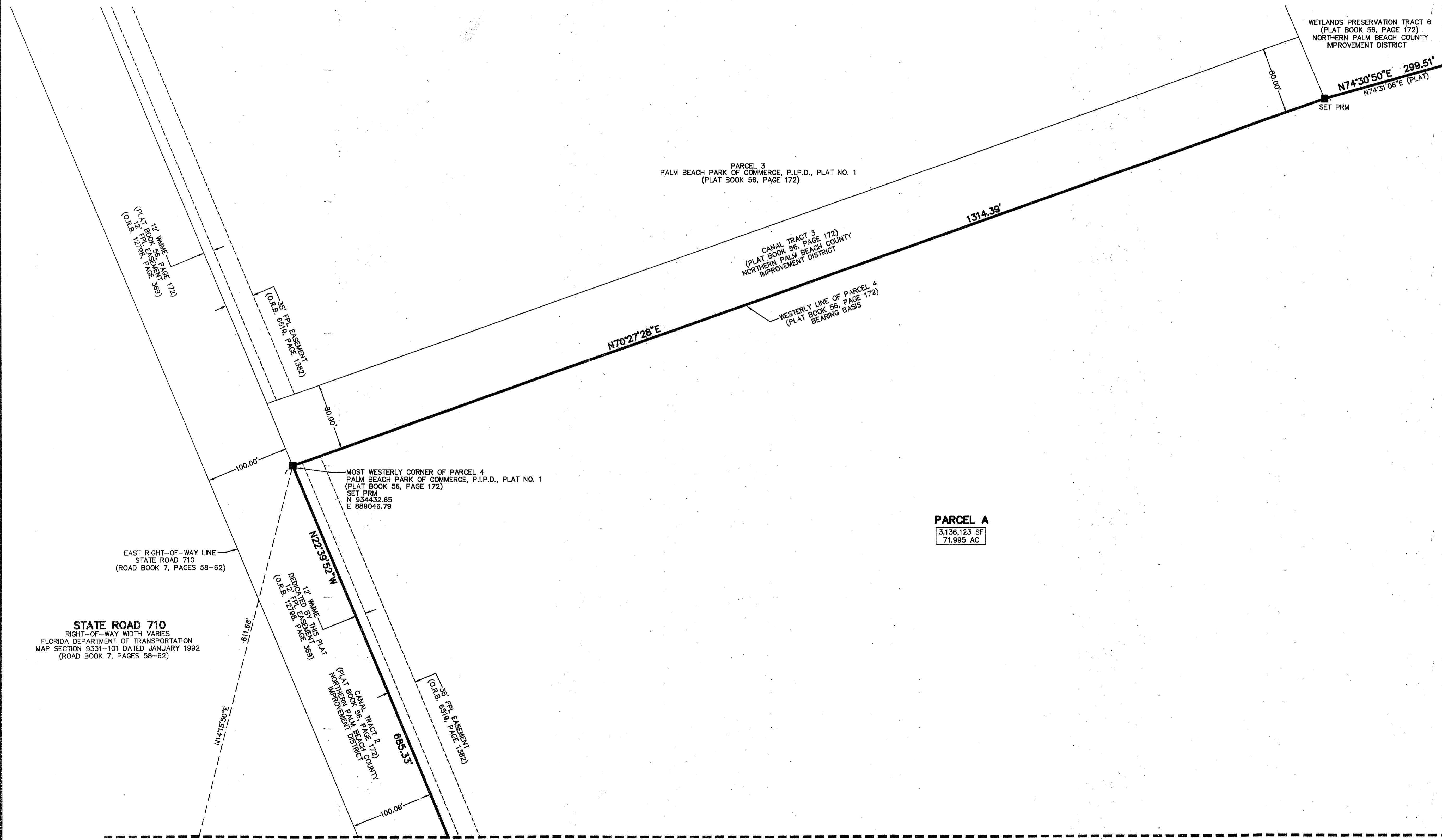


87

STATE OF FLORIDA
 COUNTY OF PALM BEACH
 THIS PLAT WAS FILED FOR
 RECORD AT _____ M.
 THIS _____ DAY OF _____
 A.D. 201____ AND DULY RECORDED
 IN PLAT BOOK _____ ON
 PAGES _____ AND _____
 SHARON R. BOCK
 CLERK AND COMPTROLLER

BY: _____
 DEPUTY CLERK

SHEET 3 OF 7



MATCH LINE SHEET 2 OF 7

MATCH LINE SHEET 4 OF 7