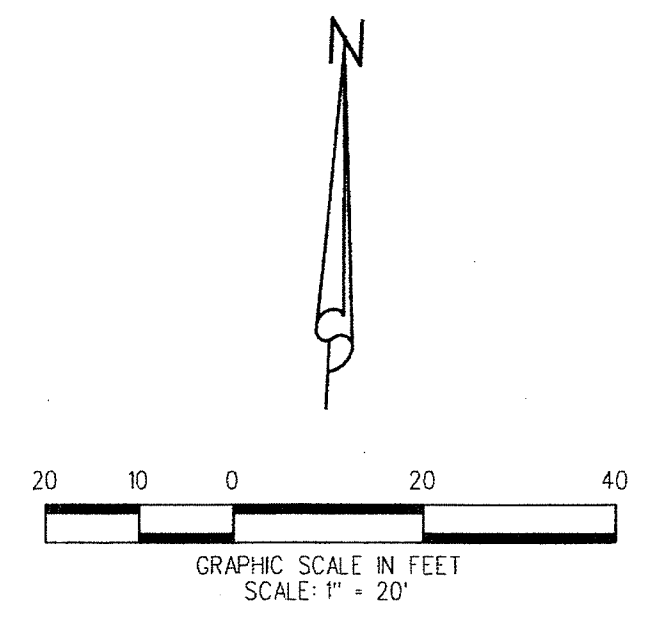
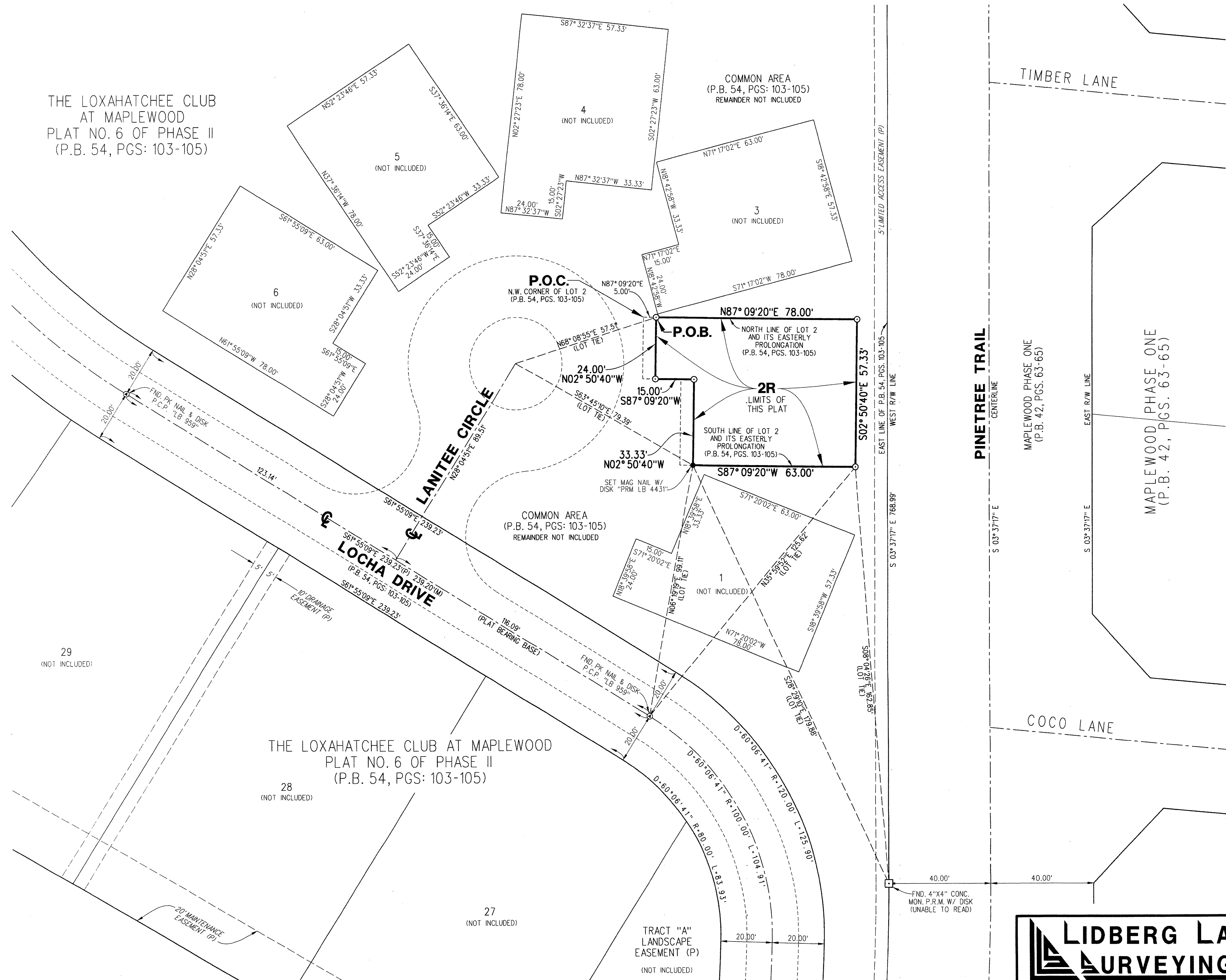


LOXAHATCHEE CLUB AT MAPLEWOOD PLAT NO. 23 OF PHASE II

BEING A REPLAT OF LOT 2, AND A PORTION OF THE COMMON AREA, AS SHOWN ON THE PLAT OF THE LOXAHATCHEE CLUB AT MAPLEWOOD PLAT NO. 6 OF PHASE II, AS RECORDED IN PLAT BOOK 54, PAGES 103 THROUGH 105, PUBLIC RECORDS OF PALM BEACH COUNTY, FLORIDA
 LYING IN SECTION 11, TOWNSHIP 41 SOUTH, RANGE 42 EAST, TOWN OF JUPITER, PALM BEACH COUNTY, FLORIDA
 JULY 2016 SHEET 2 OF 2

82



- ABBREVIATIONS:**
- D = DELTA
 - L = ARC LENGTH
 - (P) = AS SHOWN ON PLAT
 - O.R.B. = OFFICIAL RECORD BOOK
 - P.C.P. = PERMANENT CONTROL POINT
 - P.B. = PLAT BOOK
 - PG. = PAGE
 - P.R.M. = PERMANENT REFERENCE MONUMENT
 - P.S.M. = PROFESSIONAL SURVEYOR AND MAPPER
 - R = RADIUS
 - R/W = RIGHT OF WAY

- LEGEND:**
- ⊙ DENOTES PERMANENT REFERENCE MONUMENT (P.R.M.) SET 5/8" IRON ROD WITH METAL CAP STAMPED "PRM LB4431" UNLESS OTHERWISE NOTED
 - ⊖ DENOTES CENTERLINE OF RIGHT OF WAY

LIDBERG LAND SURVEYING, INC.
 675 West Indiantown Road, Suite 200, Jupiter, Florida 33458 TEL. 561-746-8454

CAD:	K:\JUST \11412 \ 54-103 \ 16-037-306 \ 16-037-306.DGN		
REF:			
FLD.	FB.	PG.	JOB 16-037-306
OFF. CASASUS			DATE JULY 2016
CKD. D.C.L.	SHEET 2	OF 2	DWG. D16-037P