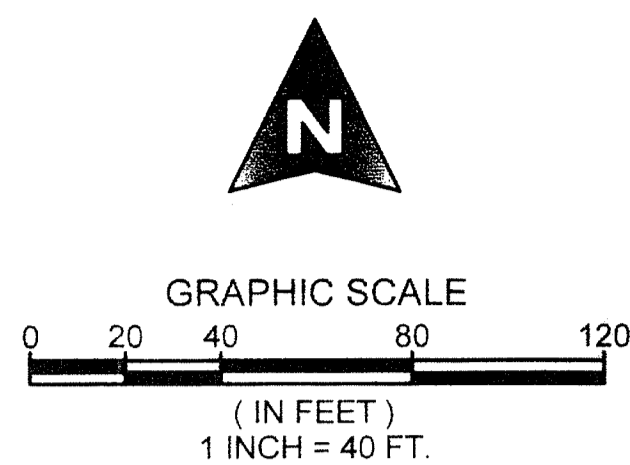
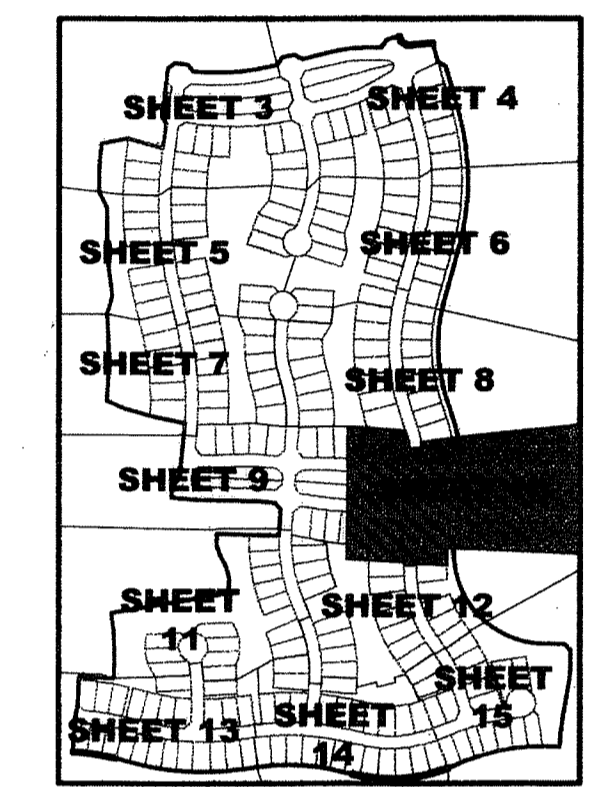
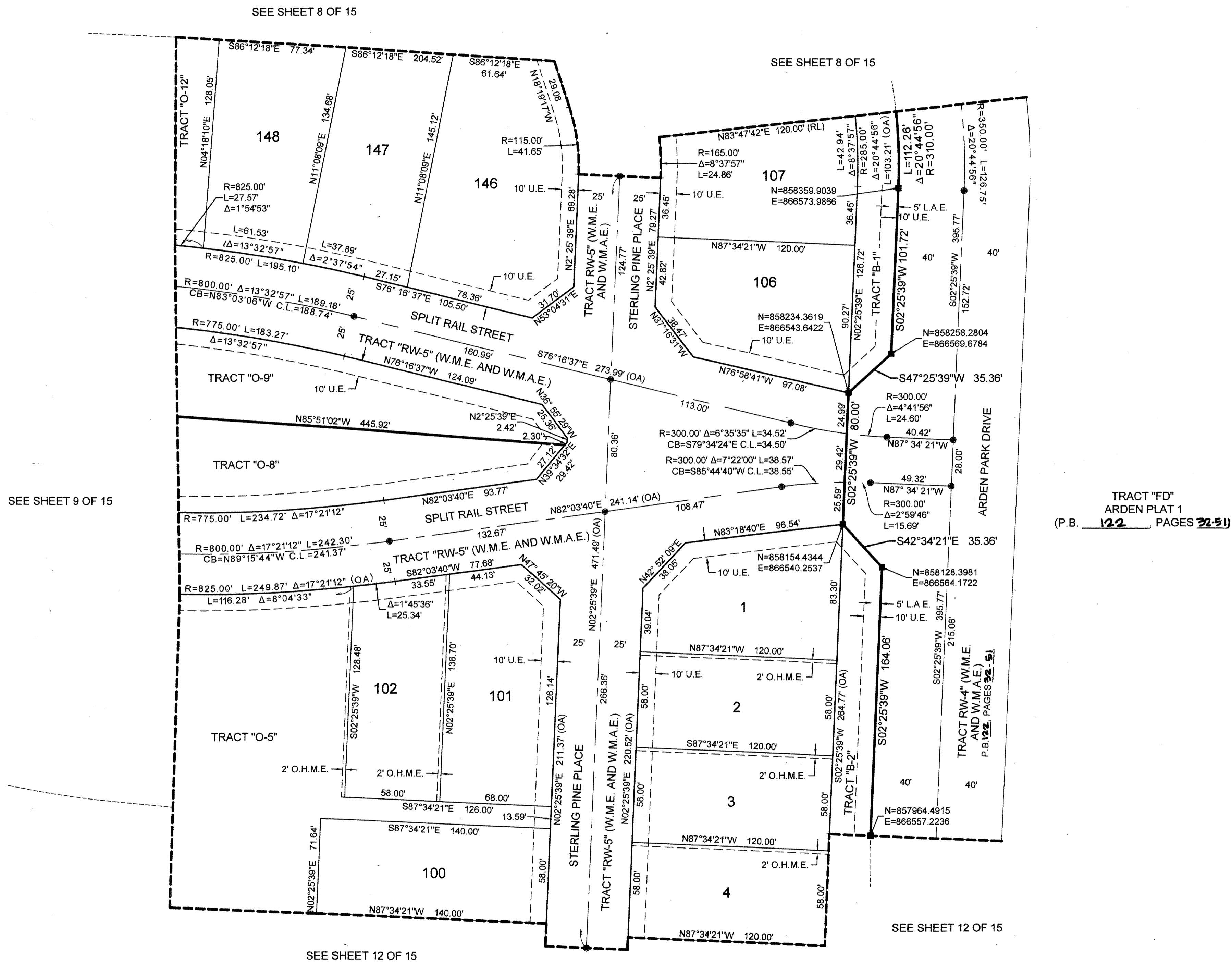


ARDEN P.U.D. POD A EAST AND POD B EAST

BEING A REPLAT OF A PORTION OF TRACT "FD", ARDEN PLAT 1, AS RECORDED IN PLAT BOOK 122, PAGES 32 THROUGH 51, PUBLIC RECORDS OF PALM BEACH COUNTY, FLORIDA, AND LYING IN SECTIONS, 28 AND 33, TOWNSHIP 43 SOUTH, RANGE 40 EAST, PALM BEACH COUNTY, FLORIDA.

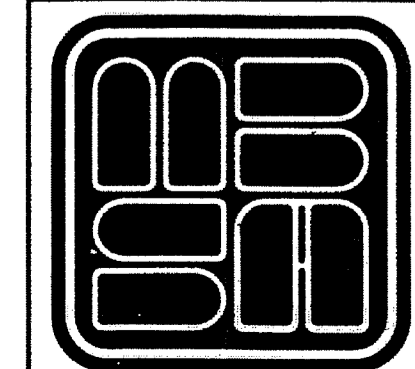


COUNTY OF PALM BEACH)
STATE OF FLORIDA) SS
THIS PLAT WAS FILED FOR RECORD AT _____ M. THIS _____ DAY OF _____, 2016, AND DULY RECORDED IN PLAT BOOK NO. _____ ON PAGE _____ THRU _____
SHARON R. BOCK, CLERK AND COMPTROLLER
BY: _____ D.C.



KEY MAP NOT TO SCALE

TRACT "FD" ARDEN PLAT 1 (P.B. 122, PAGES 32-51)



MICHAEL B. SCHORAH & ASSOCIATES, INC.
1850 FOREST HILL BLVD., SUITE 206
WEST PALM BEACH, FLORIDA 33406
EB# 2438 TEL. (561) 968-0080 FAX. (561) 642-9726 LB# 2438