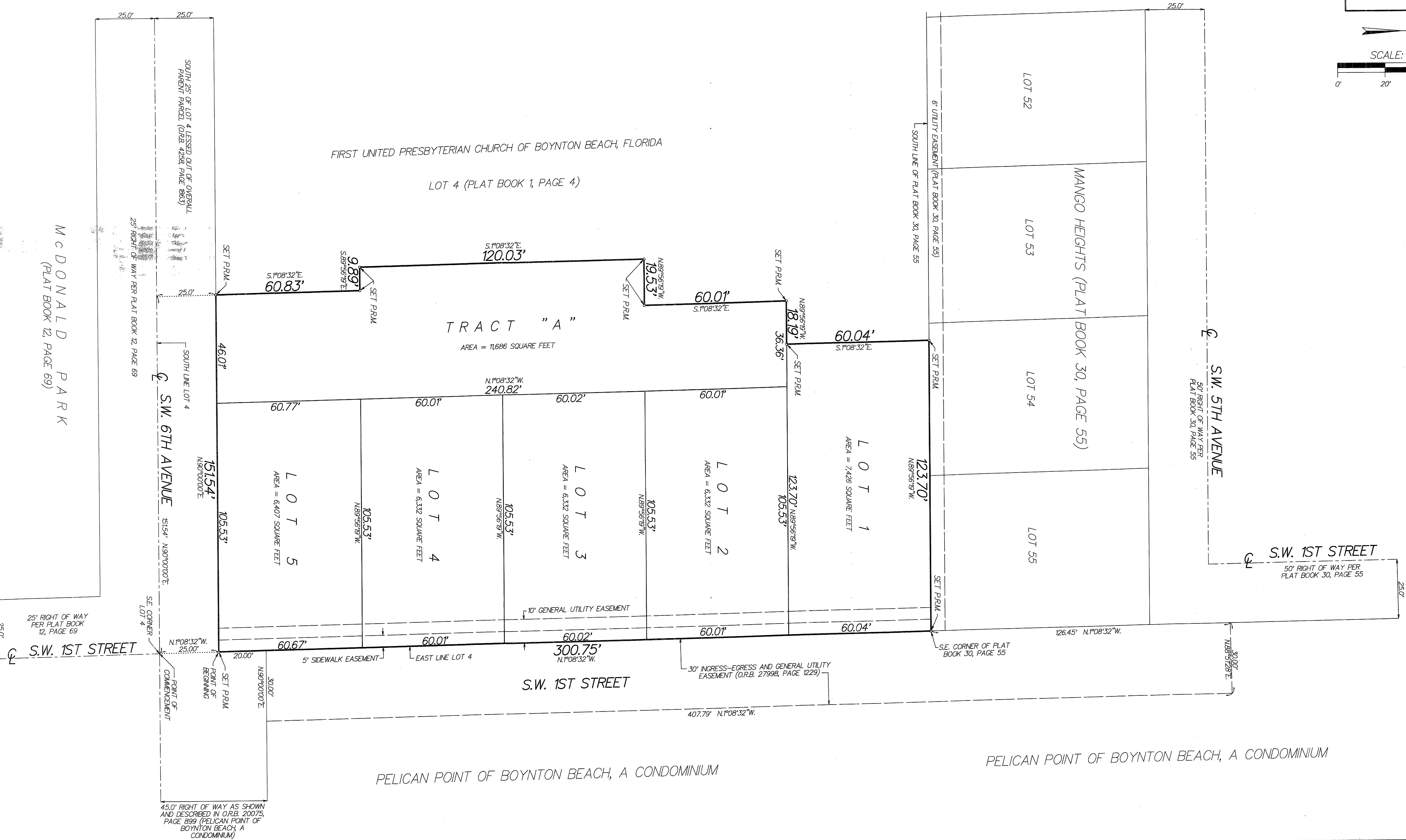
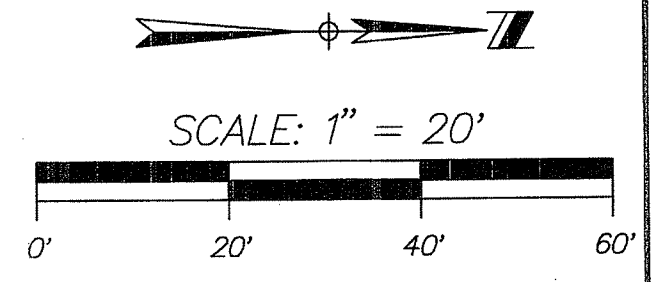
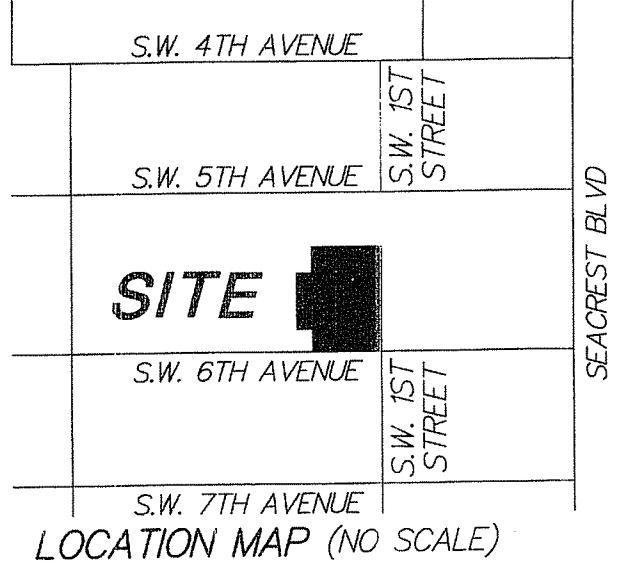


SIXTH AVENUE ESTATES

BEING A REPLAT OF A PORTION OF LOT 4, SECTION 28, TOWNSHIP 45 SOUTH, RANGE 43 EAST, ACCORDING TO THE PLAT THEREOF AS RECORDED IN PLAT BOOK 1, PAGE 4, (P.B.C.P.R.), BEING IN SECTION 28, TOWNSHIP 45 SOUTH, RANGE 43 EAST, CITY OF BOYNTON BEACH, PALM BEACH COUNTY, FLORIDA

FEBRUARY, 2016
SHEET 2 OF 2

107



fla 2/16/16