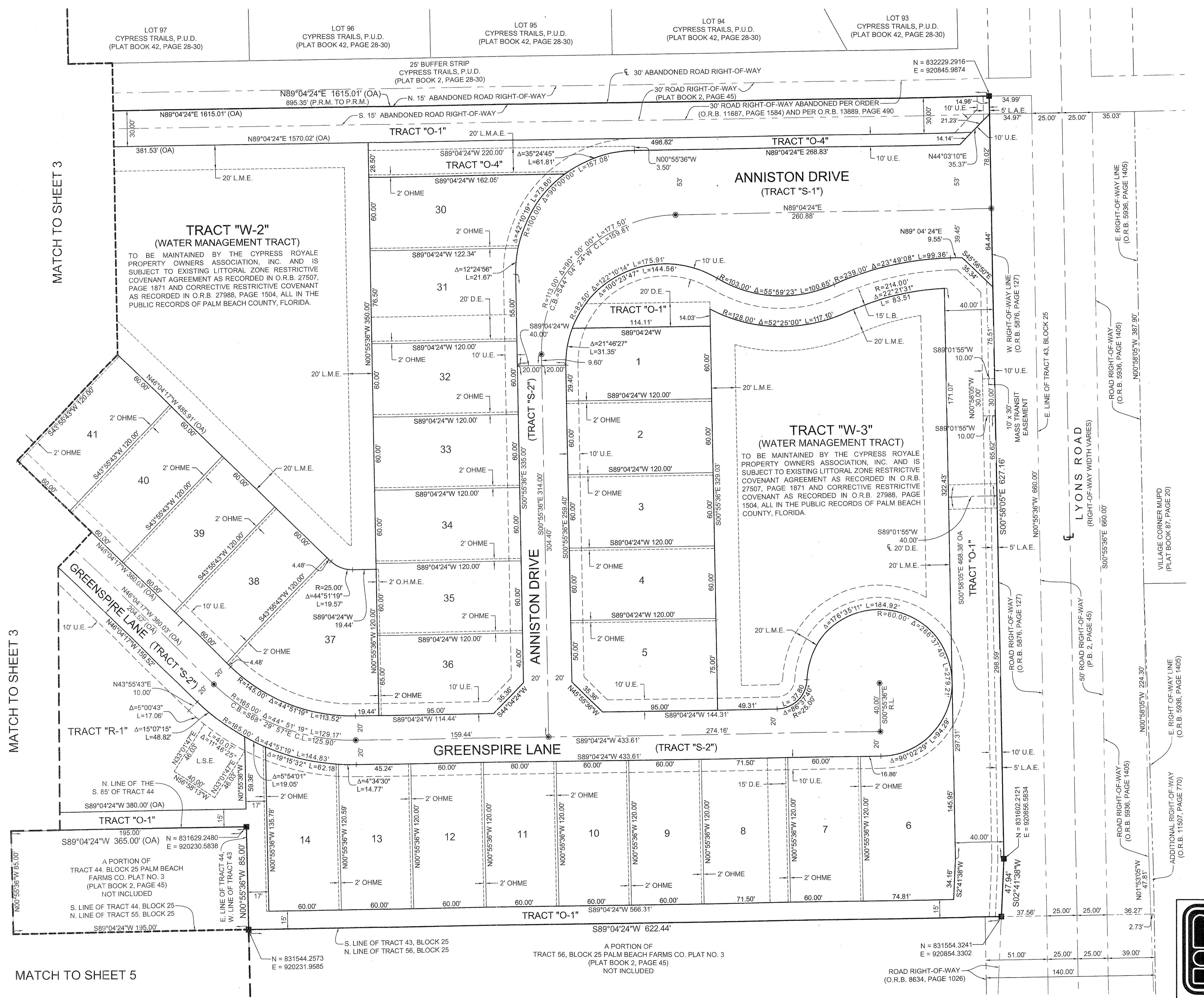


CYPRESS ROYALE PUD

LYING IN SECTIONS 19 AND 30, TOWNSHIP 44 SOUTH, RANGE 42 EAST, BEING A RE-PLAT OF A PORTION OF TRACTS 43, 44, 45 AND 55, BLOCK 25, PALM BEACH FARMS CO. PLAT NO. 3 AS, RECORDED IN PLAT BOOK 2, PAGES 45 THROUGH 54, PUBLIC RECORDS OF PALM BEACH COUNTY, FLORIDA.

102

COUNTY OF PALM BEACH)
STATE OF FLORIDA) SS
THIS PLAT WAS FILED FOR RECORD AT)
M. THIS) DAY OF)
2016, AND DULY)
RECORDED IN PLAT BOOK NO.)
ON PAGE) THRU)
SHARON R. BOCK,
CLERK AND COMPTROLLER
BY:) D.C.



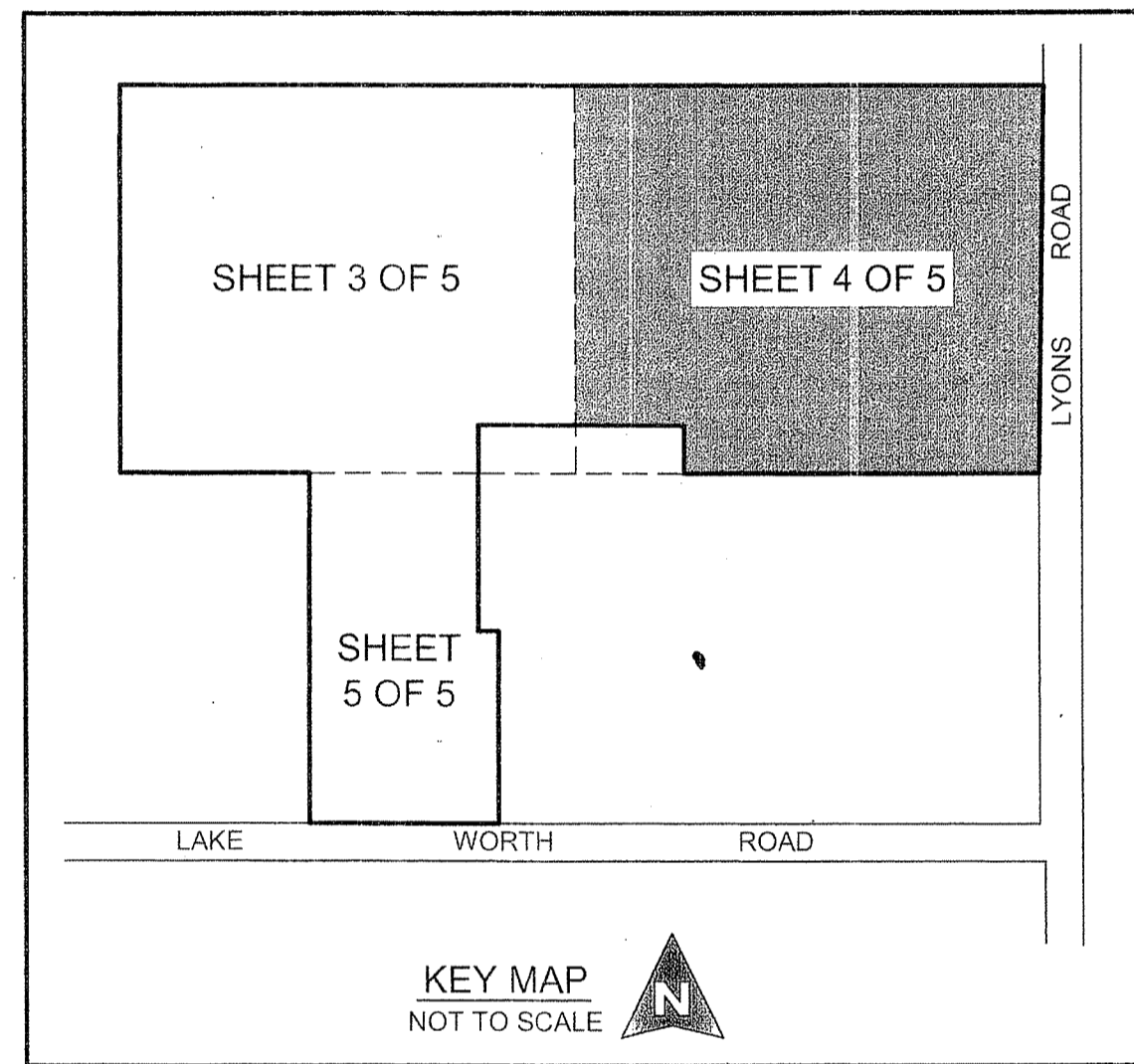
MATCH TO SHEET 3

MATCH TO SHEET 3

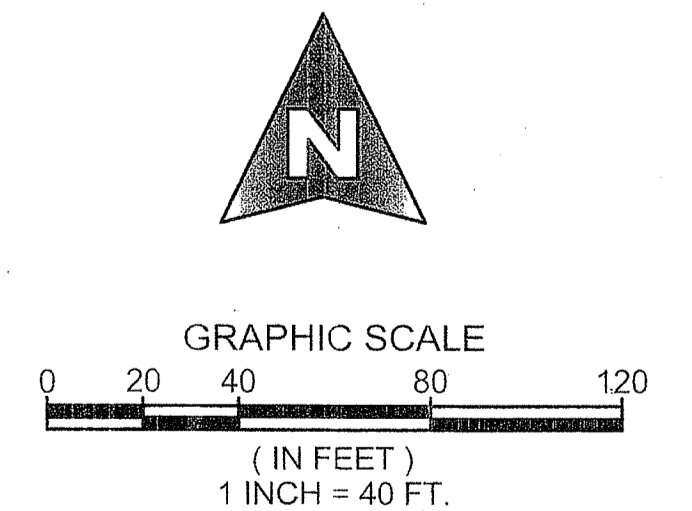
MATCH TO SHEET 5

TRACT "W-2"
(WATER MANAGEMENT TRACT)
TO BE MAINTAINED BY THE CYPRESS ROYALE PROPERTY OWNERS ASSOCIATION, INC. AND IS SUBJECT TO EXISTING LITTORAL ZONE RESTRICTIVE COVENANT AGREEMENT AS RECORDED IN O.R.B. 27507, PAGE 1871 AND CORRECTIVE RESTRICTIVE COVENANT AS RECORDED IN O.R.B. 27988, PAGE 1504, ALL IN THE PUBLIC RECORDS OF PALM BEACH COUNTY, FLORIDA.

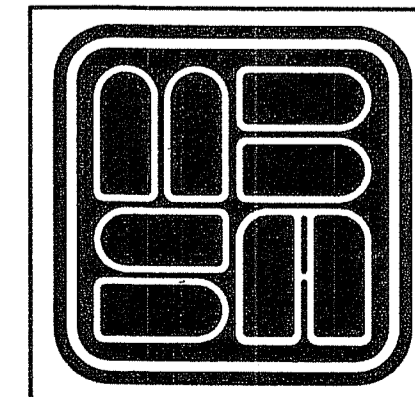
TRACT "W-3"
(WATER MANAGEMENT TRACT)
TO BE MAINTAINED BY THE CYPRESS ROYALE PROPERTY OWNERS ASSOCIATION, INC. AND IS SUBJECT TO EXISTING LITTORAL ZONE RESTRICTIVE COVENANT AGREEMENT AS RECORDED IN O.R.B. 27507, PAGE 1871 AND CORRECTIVE RESTRICTIVE COVENANT AS RECORDED IN O.R.B. 27988, PAGE 1504, ALL IN THE PUBLIC RECORDS OF PALM BEACH COUNTY, FLORIDA.



COORDINATE NOTE:
STATE PLANE COORDINATES SHOWN ARE GRID DATUM, NAD 83 1990 ADJUSTMENT, FLORIDA EAST ZONE, COORDINATE SYSTEM 1983 STATE PLANE, TRANSVERSE MERCATOR PROJECTION
LINEAR UNIT = US SURVEY FEET
ALL DISTANCES ARE GROUND
SCALE FACTOR = 1.0000209
GROUND DISTANCE X SCALE FACTOR = GRID DISTANCE
BEARINGS AS SHOWN HEREON ARE GRID DATUM, NAD 83 1990 ADJUSTMENT, FLORIDA EAST ZONE.



SHEET 4 OF 5



MICHAEL B. SCHORAH & ASSOCIATES, INC.
1850 FOREST HILL BLVD., SUITE 206
WEST PALM BEACH, FLORIDA 33406
EB# 2438 TEL. (561) 968-0080 FAX. (561) 642-9726 LB# 2438
CYPRESS ROYALE PUD