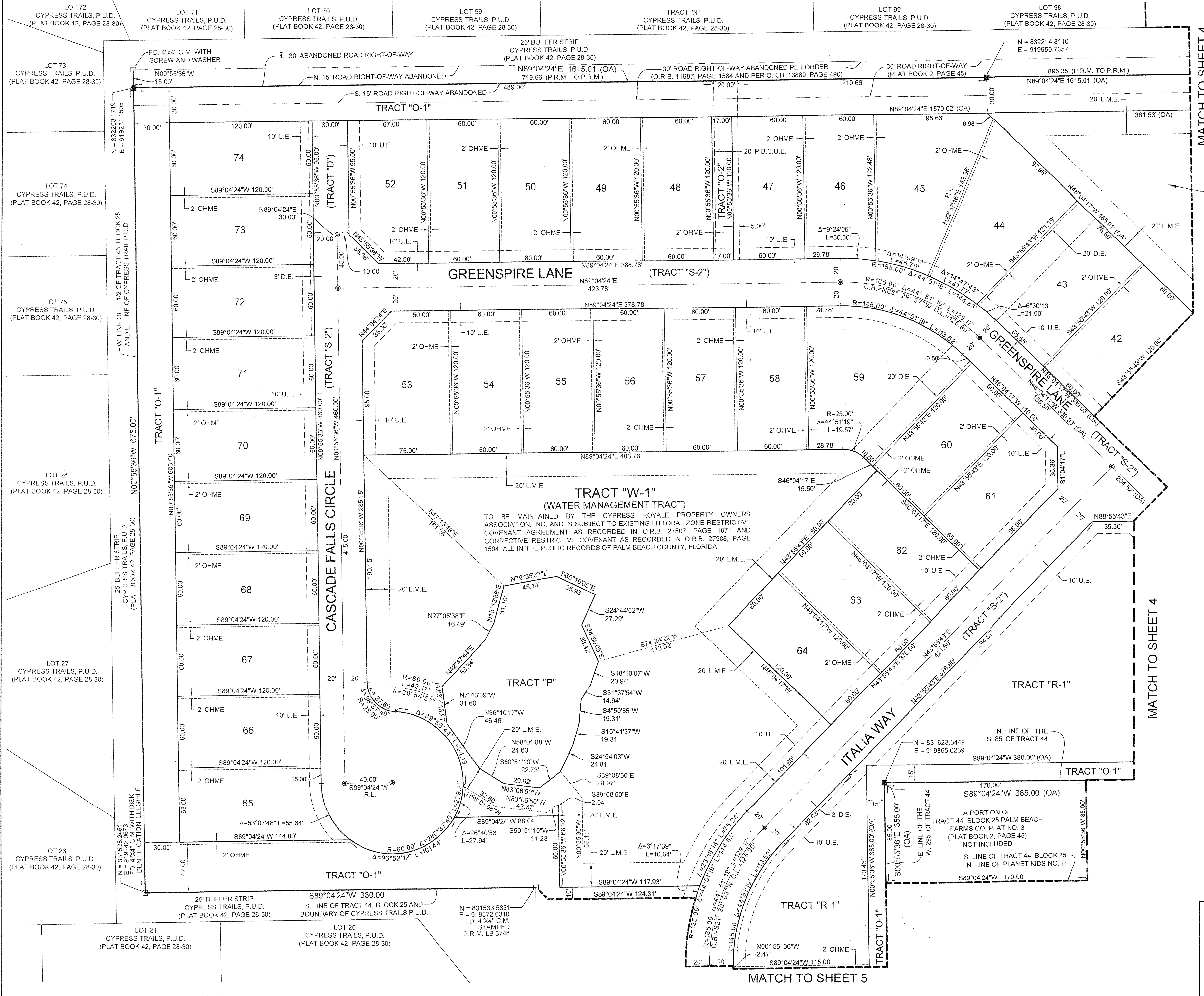


# CYPRESS ROYALE PUD

LYING IN SECTIONS 19 AND 30, TOWNSHIP 44 SOUTH, RANGE 42 EAST,  
BEING A RE-PLAT OF A PORTION OF TRACTS 43, 44, 45 AND 55, BLOCK 25, THE PALM BEACH FARMS CO. PLAT NO. 3,  
AS RECORDED IN PLAT BOOK 2, PAGES 45 THROUGH 54, PUBLIC RECORDS OF PALM BEACH COUNTY, FLORIDA.

# 101

COUNTY OF PALM BEACH )  
STATE OF FLORIDA ) SS  
THIS PLAT WAS FILED FOR RECORD AT )  
M. THIS ) DAY OF )  
RECORDED IN PLAT BOOK NO. )  
ON PAGE ) THRU )  
SHARON R. BOCK,  
CLERK AND COMPTROLLER  
BY: ) D.C.

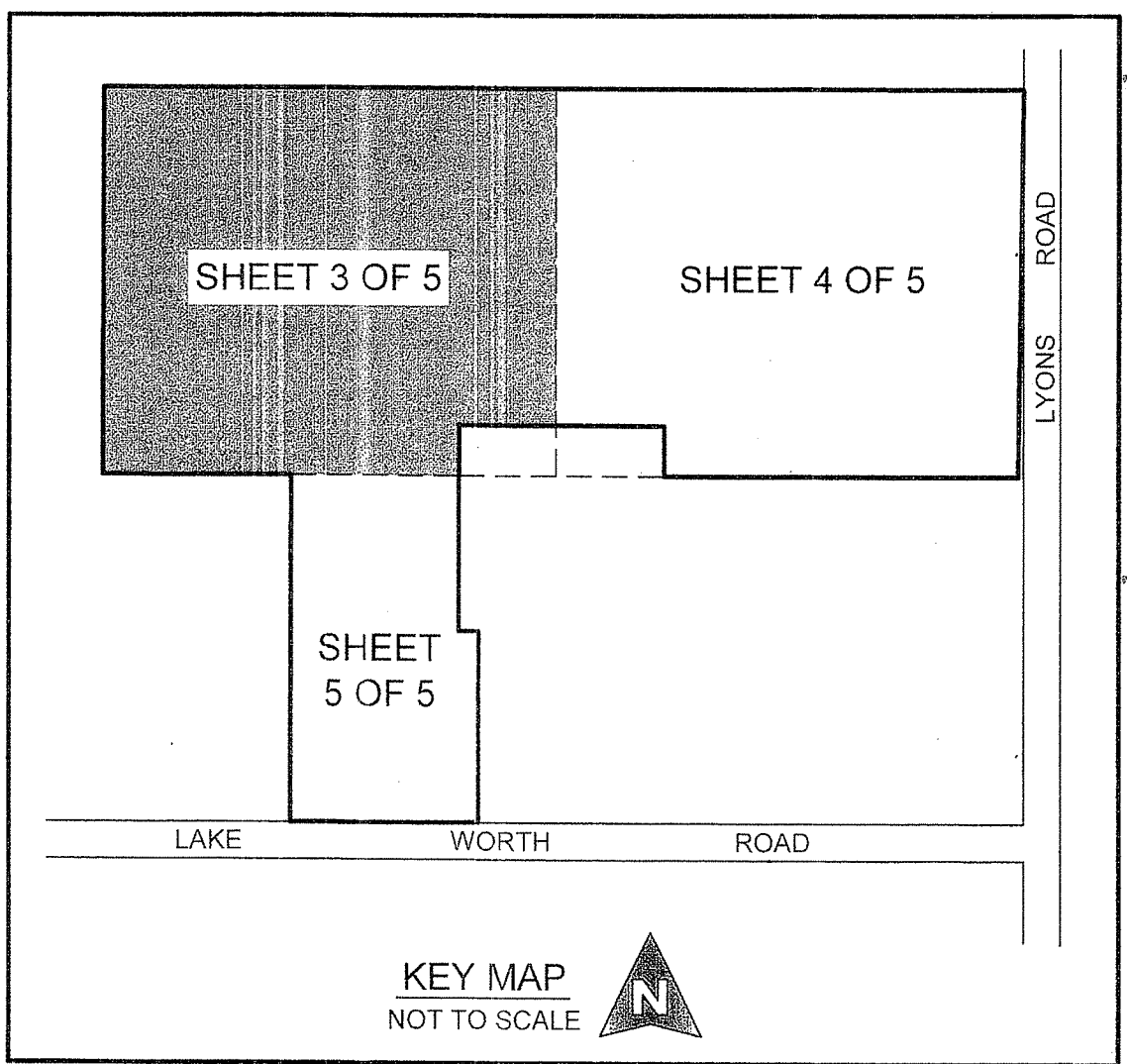


MATCH TO SHEET 4

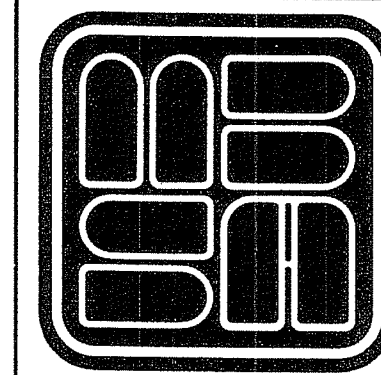
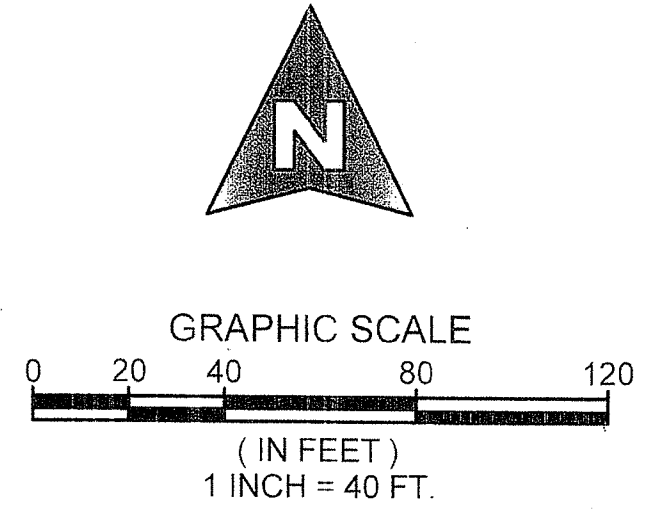
MATCH TO SHEET 4

MATCH TO SHEET 5

**TRACT "W-2"**  
TO BE MAINTAINED BY THE CYPRESS ROYALE PROPERTY OWNERS ASSOCIATION, INC. AND IS SUBJECT TO EXISTING LITTORAL ZONE RESTRICTIVE COVENANT AGREEMENT AS RECORDED IN O.R.B. 27507, PAGE 1871 AND CORRECTIVE RESTRICTIVE COVENANT AS RECORDED IN O.R.B. 27988, PAGE 1504, ALL IN THE PUBLIC RECORDS OF PALM BEACH COUNTY, FLORIDA.



**COORDINATE NOTE:**  
STATE PLANE COORDINATES SHOWN ARE GRID DATUM, NAD 83 1990 ADJUSTMENT, FLORIDA EAST ZONE, COORDINATE SYSTEM 1983 STATE PLANE, TRANSVERSE MERCATOR PROJECTION  
LINEAR UNIT = US SURVEY FEET  
ALL DISTANCES ARE GROUND  
SCALE FACTOR = 1.0000209  
GROUND DISTANCE X SCALE FACTOR = GRID DISTANCE  
BEARINGS AS SHOWN HEREON ARE GRID DATUM, NAD 83 1990 ADJUSTMENT, FLORIDA EAST ZONE.



**MICHAEL B. SCHORAH & ASSOCIATES, INC.**  
1850 FOREST HILL BLVD., SUITE 206  
WEST PALM BEACH, FLORIDA 33406  
EB# 2438 TEL. (561) 968-0080 FAX. (561) 642-9726 LB# 2438  
**CYPRESS ROYALE PUD**