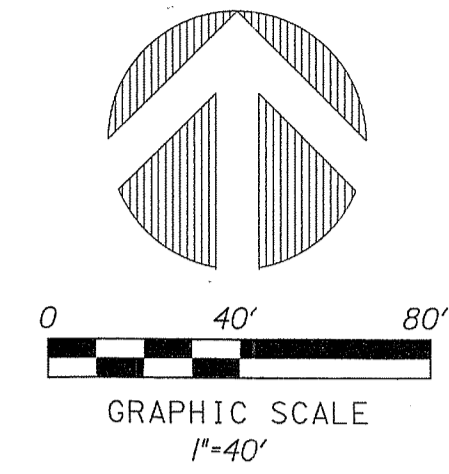


PERIMETER
 SURVEYING & MAPPING
 Certificate of Authorization No. LB7264
 Prepared by: Jeff S. Hodapp, P.S.M.
 947 Clint Moore Road
 Boca Raton, Florida 33487
 Tel: (561) 241-9988
 Fax: (561) 241-5182

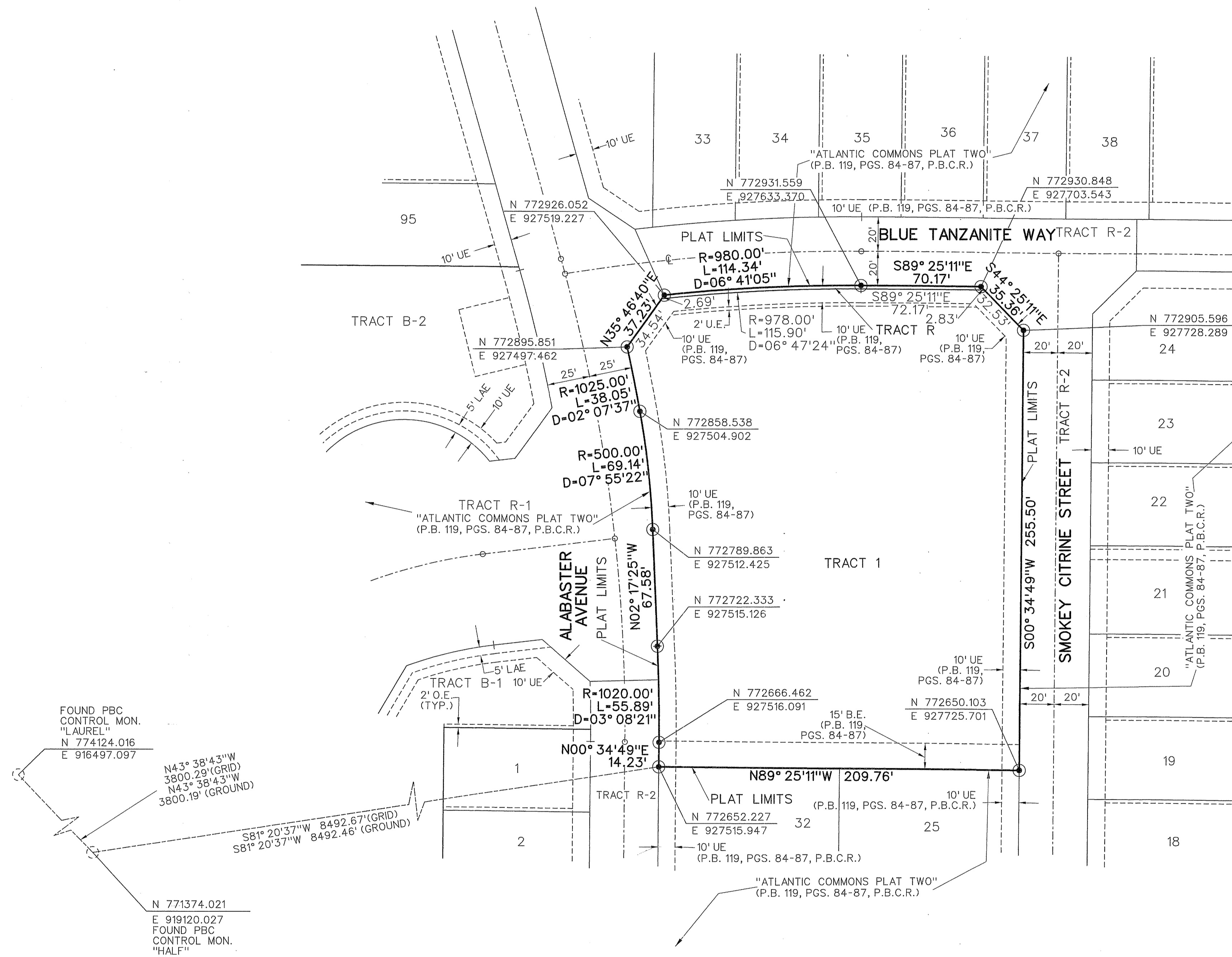
ATLANTIC COMMONS - PLAT TWO TRACT A REPLAT

A REPLAT OF ALL OF TRACT A, "ATLANTIC COMMONS - PLAT TWO" (P.B. 119, PGS. 84-87, P.B.C.R.)
 SECTION 16, TOWNSHIP 46 SOUTH, RANGE 42 EAST,
 PALM BEACH COUNTY, FLORIDA.

94



SHEET 2 OF 2



- LEGEND:**
- SET P.R.M. (UNLESS OTHERWISE NOTED)-4" X 4" CONC. MON. WITH ALUMINUM DISK STAMPED P.R.M. #LB7264
 - PERMANENT CONTROL POINT NAIL & DISK STAMPED P.C.P. #LB7264
 - CENTERLINE
- ABBREVIATIONS:**
- ALUM ALUMINUM
 - B.E. BUFFER EASEMENT
 - CH CHORD
 - CHB CHORD BEARING
 - CONC. CONCRETE
 - COR. CORNER
 - D DELTA (CENTRAL ANGLE)
 - D.E. DRAINAGE EASEMENT
 - D-T. DRIVEWAY TRACT
 - FND. FOUND
 - L ARCLength
 - L.A.E. LIMITED ACCESS EASEMENT
 - L.B.F. LANDSCAPE BUFFER EASEMENT
 - L.B. LICENSED BUSINESS
 - L.E. LANDSCAPE EASEMENT
 - L.M.E. LAKE MAINTENANCE EASEMENT
 - L.M.A.E. LAKE MAINTENANCE ACCESS EASEMENT
 - L.S. LICENSED SURVEYOR
 - L.S.E. LIFT STATION EASEMENT
 - L.W.D.D. LAKE WORTH DRAINAGE DISTRICT
 - MON. MONUMENT
 - O.E. MAINTENANCE AND ROOF OVERHANG EASEMENT
 - O.R.B. OFFICIAL RECORDS BOOK
 - N.R. NON-RADIAL
 - P.B. PLAT BOOK
 - P.B.C. PALM BEACH COUNTY
 - P.B.C.R. PALM BEACH COUNTY RECORDS
 - P.B.C.U.E. PALM BEACH COUNTY UTILITY EASEMENT
 - Pg. PAGE
 - P.C.P. PERMANENT CONTROL POINT
 - P.O.B. POINT OF BEGINNING
 - P.O.C. POINT OF COMMENCEMENT
 - P.R.M. PERMANENT REFERENCE MONUMENT
 - P.S.M. PROFESSIONAL SURVEYOR & MAPPER
 - P.U.D. PLANNED UNIT DEVELOPMENT
 - R RADIAL
 - RAD. ROAD PLAT BOOK
 - R.P.B. RIGHT-OF-WAY
 - R/W. RIGHT-OF-WAY
 - SEC. SECTION
 - S.F. SQUARE FEET
 - U.E. UTILITY EASEMENT