

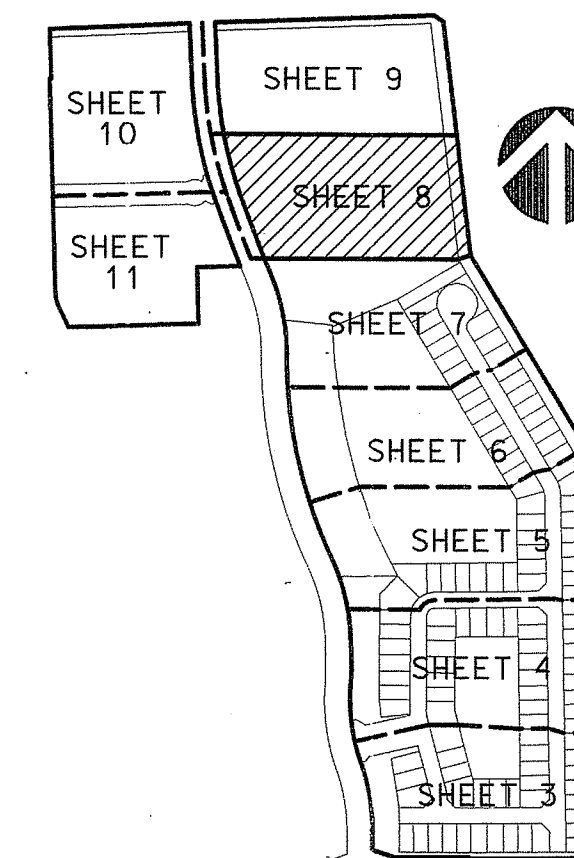
PERIMETER
 SURVEYING & MAPPING
 Prepared by: Jeff S. Hodapp, P.S.M.
 Certificate of Authorization No. LB7264
 947 Clint Moore Road
 Boca Raton, Florida 33487
 Tel: (561) 241-9988
 Fax: (561) 241-5182

CORTINA PUD REPLAT TWO

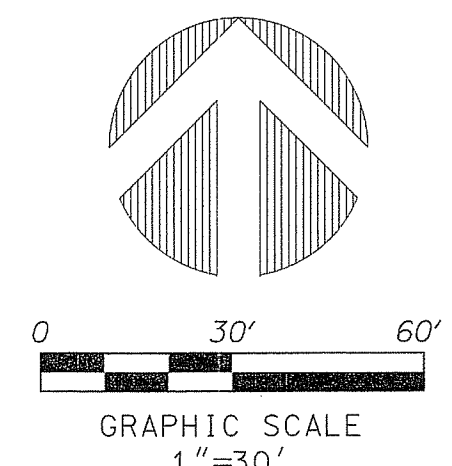
A REPLAT OF ALL OF "CORTINA PUD REPLAT" (P.B. 109, PGS. 196-202, P.B.C.R.) AND PORTIONS
 OF "BOYNTON TOWN CENTER, A P.C.D." (P.B. 106, PGS. 144-151, P.B.C.R.)
 SECTION 20, TOWNSHIP 45 SOUTH, RANGE 43 EAST
 CITY OF BOYNTON BEACH, PALM BEACH COUNTY, FLORIDA.
 FEBRUARY, 2016

87

- LEGEND:**
- ⊙ SET P.R.M. (UNLESS OTHERWISE NOTED)-4" x 4" CONC. MON. WITH ALUMINUM DISK STAMPED *LB7264
 - P.C.P. CENTERLINE
- ABBREVIATIONS:**
- AC. ACRES
 - CH. CHORD
 - CHB. CHORD BEARING
 - CONC. CONCRETE
 - COR. CORNER
 - D. DELTA (CENTRAL ANGLE)
 - D.E. DRAINAGE EASEMENT
 - L. LENGTH
 - L.A.E. LIMITED ACCESS EASEMENT
 - L.B. LICENSED BUSINESS
 - L.B.E. LANDSCAPE BUFFER EASEMENT
 - L.M.E. LAKE MAINTENANCE EASEMENT
 - L.S. LICENSED SURVEYOR
 - L.S.E. LIFT STATION EASEMENT
 - L.W.D.D. LAKE WORTH DRAINAGE DISTRICT
 - MON. MONUMENT
 - O.R.B. OFFICIAL RECORDS BOOK
 - N.R. NON-RADIAL
 - P.B. PLAT BOOK
 - P.B.C.R. PALM BEACH COUNTY RECORDS
 - PG. PAGE
 - P.C.P. PERMANENT CONTROL POINT
 - P.O.B. POINT OF BEGINNING
 - P.O.C. POINT OF COMMENCEMENT
 - P.R.M. PERMANENT REFERENCE MONUMENT
 - P.S.M. PROFESSIONAL SURVEYOR & MAPPER
 - P.U.D. PLANNED UNIT DEVELOPMENT
 - R. RADIUS
 - R/W. RIGHT-OF-WAY
 - R.U.E. ROAD AND UTILITY EASEMENT
 - SEC. SECTION
 - S.F. SQUARE FEET
 - U.E. UTILITY EASEMENT

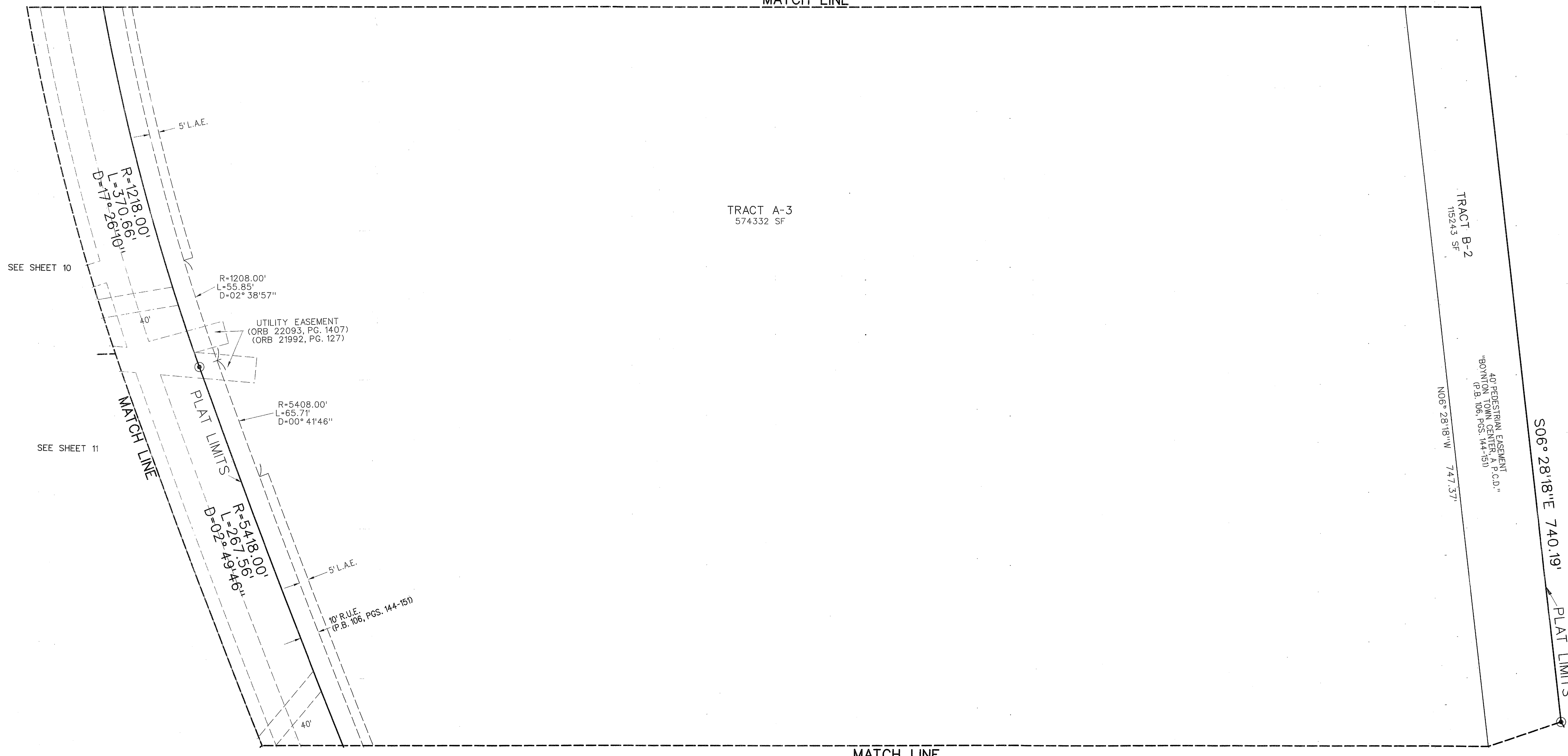


SHEET 8 OF 11



SEE SHEET 9

MATCH LINE



LAKE WORTH DRAINAGE DISTRICT
 CANAL E-4
 (180' CANAL R/W)
 (P.B. 46, PAGES 81-83, P.B.C.R.)
 (O.R.B. 1654, PG. 370, P.B.C.R.)
 (O.R.B. 3772, PG. 800, P.B.C.R.)

MATCH LINE
SEE SHEET 7