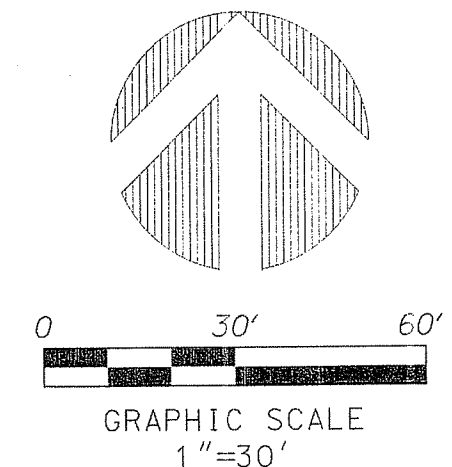


**PERIMETER**  
 SURVEYING & MAPPING  
 Prepared by: Jeff S. Hodapp, P.S.M.  
 Certificate of Authorization No. LB7264  
 947 Clint Moore Road  
 Boca Raton, Florida 33487  
 Tel: (561) 241-9988  
 Fax: (561) 241-5182



- LEGEND:**
- SET P.R.M. (UNLESS OTHERWISE NOTED)-4" x 4" CONC. MON. WITH ALUMINUM DISK STAMPED "LB7264 P.C.P. CENTERLINE
  - 
  -
- ABBREVIATIONS:**
- AC. ACRES
  - CH. CHORD
  - CHB. CHORD BEARING
  - CONC. CONCRETE
  - COR. CORNER
  - D. DELTA (CENTRAL ANGLE)
  - D.E. DRAINAGE EASEMENT
  - L. ARCLength
  - L.A.E. LIMITED ACCESS EASEMENT
  - L.B. LICENSED BUSINESS
  - L.B.E. LANDSCAPE BUFFER EASEMENT
  - L.M.E. LAKE MAINTENANCE EASEMENT
  - L.S. LICENSED SURVEYOR

# CORTINA PUD REPLAT TWO

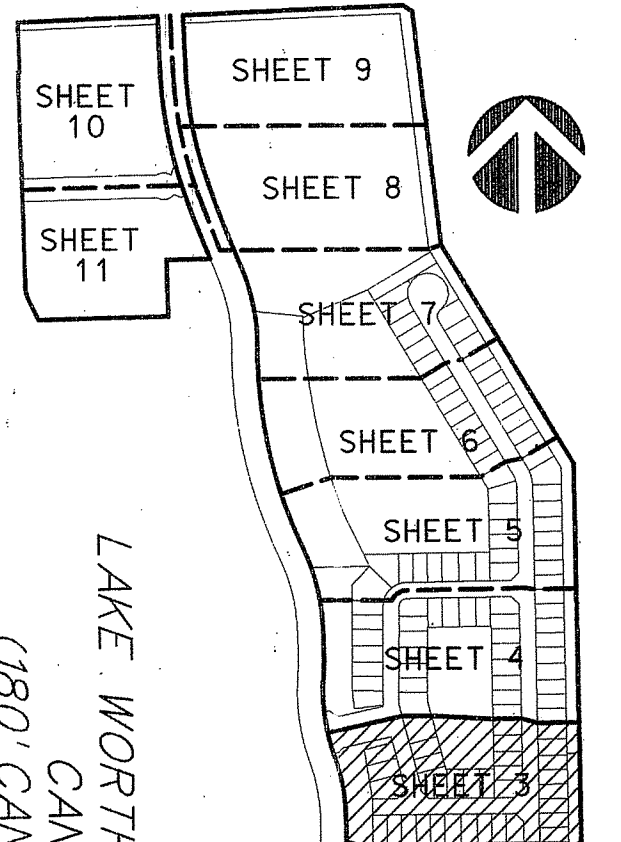
A REPLAT OF ALL OF "CORTINA PUD REPLAT" (P.B. 109, PGS. 196-202, P.B.C.R.) AND PORTIONS OF "BOYNTON TOWN CENTER, A P.C.D." (P.B. 106, PGS. 144-151, P.B.C.R.)

SECTION 20, TOWNSHIP 45 SOUTH, RANGE 43 EAST  
 CITY OF BOYNTON BEACH, PALM BEACH COUNTY, FLORIDA.  
 FEBRUARY, 2016

- ABBREVIATIONS:**
- L.S.E. LIFT STATION EASEMENT
  - L.W.D.D. LAKE WORTH DRAINAGE DISTRICT
  - MON. MONUMENT
  - O.R.B. OFFICIAL RECORDS BOOK
  - N.R. NON-RADIAL
  - P.B. PLAT BOOK
  - P.B.C.R. PALM BEACH COUNTY RECORDS
  - P.C. PAGE
  - P.C.P. PERMANENT CONTROL POINT
  - P.O.B. POINT OF BEGINNING
  - P.O.C. POINT OF COMMENCEMENT
  - P.P.M. PERMANENT REFERENCE MONUMENT
  - P.S.M. PROFESSIONAL SURVEYOR & MAPPER
  - P.U.D. PLANNED UNIT DEVELOPMENT
  - R. RADIUS
  - R/W. RIGHT-OF-WAY
  - R.U.E. ROAD AND UTILITY EASEMENT
  - SEC. SECTION
  - S.F. SQUARE FEET
  - U.E. UTILITY EASEMENT

SEE SHEET 4

MATCH LINE



SHEET 3 OF 11

LAKE WORTH DRAINAGE DISTRICT  
 CANAL E-4  
 (180' CANAL R/W)  
 (PER P.B. 46, PAGES 81-83, P.B.C.R.)  
 (O.R.B. 1654, PG. 370, P.B.C.R.)  
 (O.R.B. 3772, PG. 800, P.B.C.R.)  
 PLAT LIMITS 500' 4103"E 1200.00'

KEY MAP NOT TO SCALE