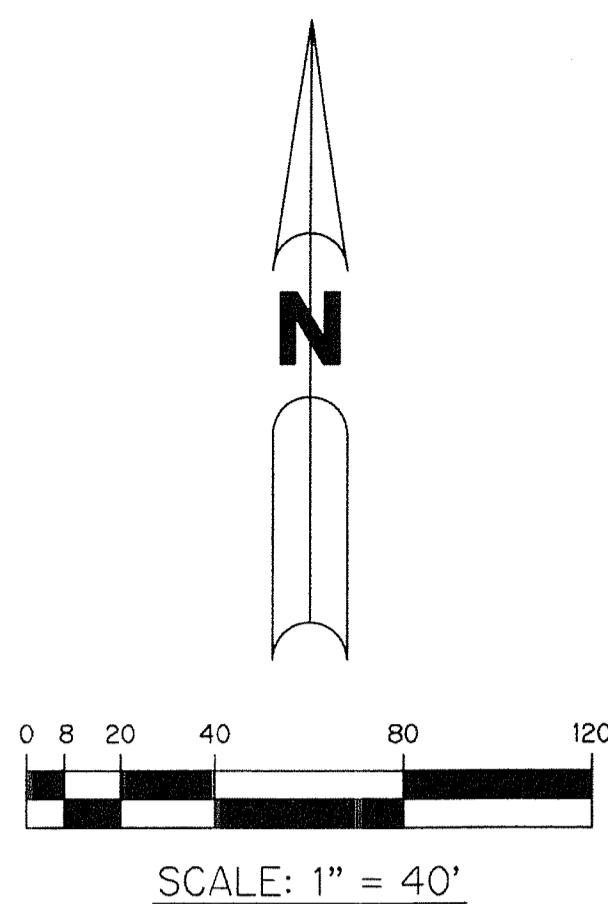


HYDER AGR-P.U.D. - PLAT SIX

BEING A REPLAT OF ALL OF TRACTS 18 THROUGH 24, TRACTS 43 THROUGH 47, TRACTS 50 THROUGH 53, AND A PORTION OF TRACTS 17, 48, 49, TRACTS 75 THROUGH 83, ACCORDING TO THE PLAT OF PALM BEACH FARMS CO. PLAT NO. 1, AS RECORDED IN PLAT BOOK 2, PAGES 26 THROUGH 28, PUBLIC RECORDS, PALM BEACH COUNTY, FLORIDA, LYING WITHIN SECTION 30, TOWNSHIP 46 SOUTH, RANGE 42 EAST, PALM BEACH COUNTY, FLORIDA

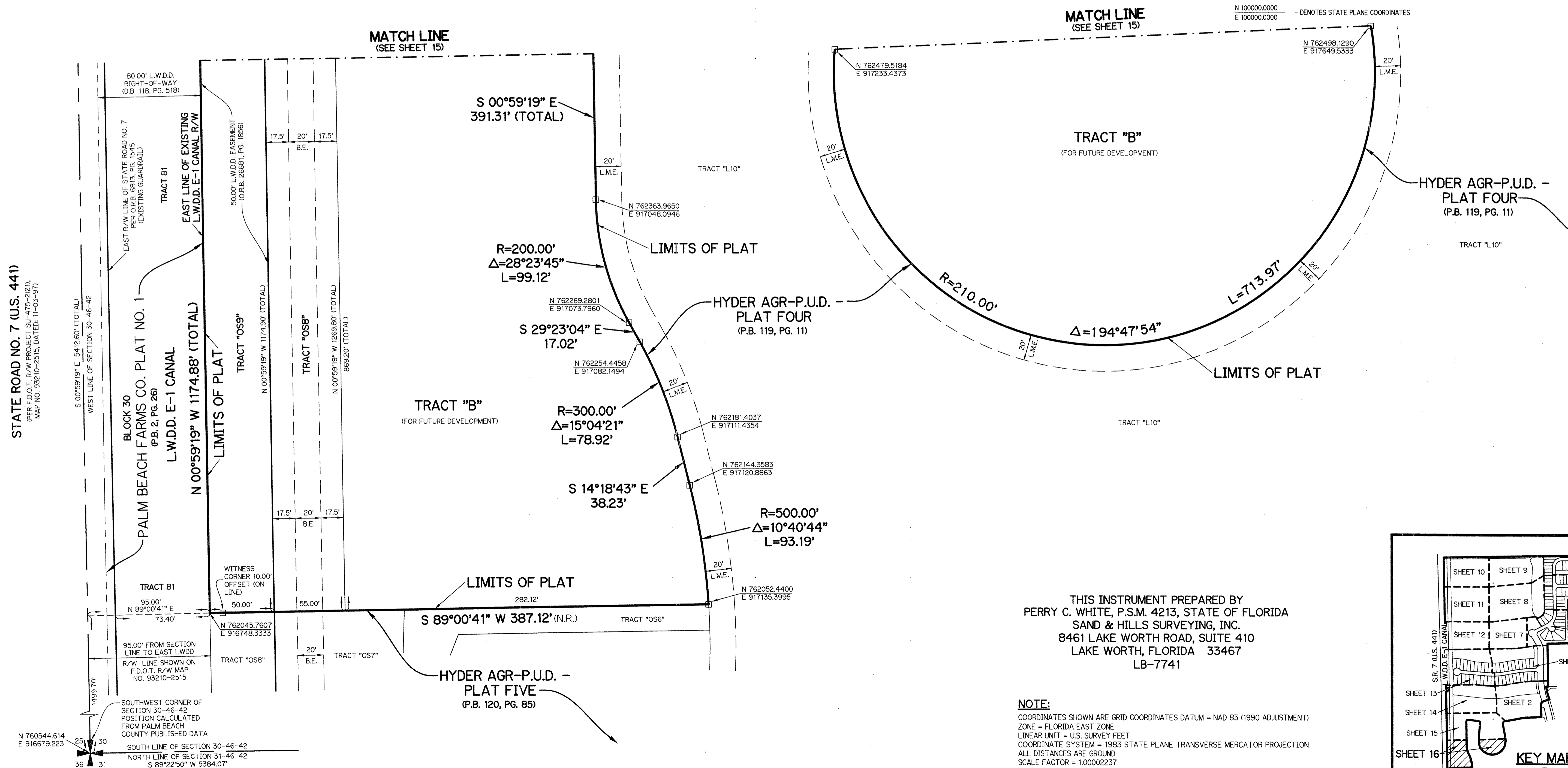
SHEET 16 OF 16



LEGEND:

- - SET PERMANENT REFERENCE MONUMENT 4"x4" CONCRETE MONUMENT WITH 1.5" DISK STAMPED L.B. #7741
- - FOUND PERMANENT REFERENCE MONUMENT 4"x4" CONCRETE MONUMENT WITH 1.5" DISK STAMPED L.B. #7741
- - SET PERMANENT CONTROL POINT NAIL WITH 1.25" DISK STAMPED L.B. #7741
- - FOUND PERMANENT CONTROL POINT NAIL WITH 1.25" DISK STAMPED L.B. #7741
- AGR - AGRICULTURAL
- Δ - DELTA ANGLE
- B.E. - BUFFER EASEMENT
- CB - CHORD BEARING
- CH - CHORD DISTANCE
- CL - CENTERLINE
- D.B. - DEED BOOK
- D.E. - DRAINAGE EASEMENT
- F.P.L. - FLORIDA POWER & LIGHT
- L - ARC LENGTH
- L.A.E. - LIMITED ACCESS EASEMENT
- L.M.A.E. - LAKE MAINTENANCE ACCESS EASEMENT
- L.M.E. - LAKE MAINTENANCE EASEMENT
- L.W.D.D. - LAKE WORTH DRAINAGE DISTRICT
- N.R. - NOT RADIAL
- N.T.S. - NOT TO SCALE
- O.R.B. - OFFICIAL RECORD BOOK
- O.E. - MAINTENANCE & ROOF OVERHANG EASEMENT
- P.B.C.U.E. - PALM BEACH COUNTY UTILITY EASEMENT
- P.B. - PLAT BOOK
- P.C.P. - PERMANENT CONTROL POINT
- PGS. - PAGES
- P.O.B. - POINT OF BEGINNING
- P.O.C. - POINT OF COMMENCEMENT
- P.R.C. - POINT OF REVERSE CURVATURE
- P.S.M. - PROFESSIONAL SURVEYOR AND MAPPER
- P.U.D. - PLANNED UNIT DEVELOPMENT
- R - RADIUS
- RAD - RADIAL
- R/W - RIGHT-OF-WAY
- R.D. & D. - ROAD, DYKE AND DITCH RESERVATION
- S.T. - SURVEY TIE
- U.E. - UTILITY EASEMENT

39



STATE ROAD NO. 7 (U.S. 441)
 (PER F.D.O.T. R/W PROJECT SU-475-2621,
 MAP NO. 93210-2515, DATED 11-03-97)

SOUTHWEST CORNER OF SECTION 30-46-42 POSITION CALCULATED FROM PALM BEACH COUNTY PUBLISHED DATA
 N 760544.614 E 916679.223
 SOUTH LINE OF SECTION 30-46-42
 NORTH LINE OF SECTION 31-46-42
 S 89°22'50" W 5384.07'

THIS INSTRUMENT PREPARED BY
 PERRY C. WHITE, P.S.M. 4213, STATE OF FLORIDA
 SAND & HILLS SURVEYING, INC.
 8461 LAKE WORTH ROAD, SUITE 410
 LAKE WORTH, FLORIDA 33467
 LB-7741

NOTE:
 COORDINATES SHOWN ARE GRID COORDINATES DATUM = NAD 83 (1990 ADJUSTMENT)
 ZONE = FLORIDA EAST ZONE
 LINEAR UNIT = U.S. SURVEY FEET
 COORDINATE SYSTEM = 1983 STATE PLANE TRANSVERSE MERCATOR PROJECTION
 ALL DISTANCES ARE GROUND
 SCALE FACTOR = 1.00002237
 PLAT BEARING = GRID BEARING
 GROUND DISTANCE X SCALE FACTOR = GRID DISTANCE

