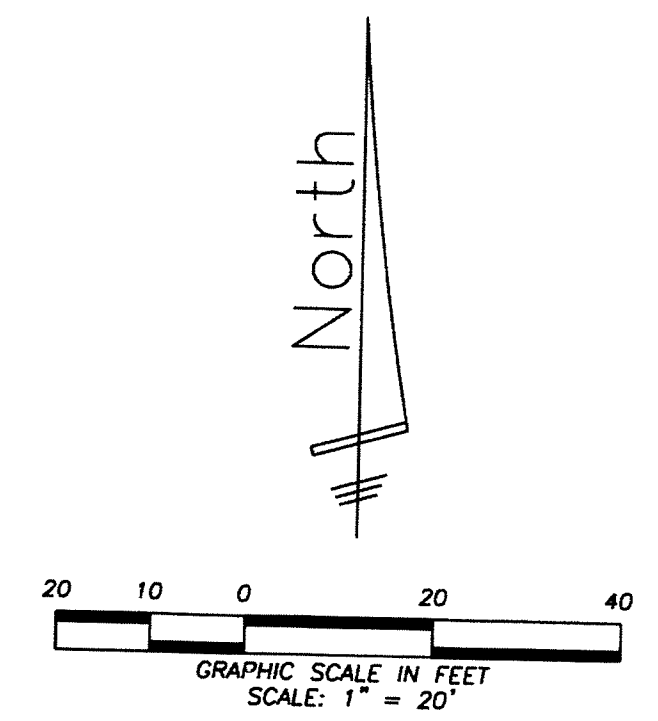
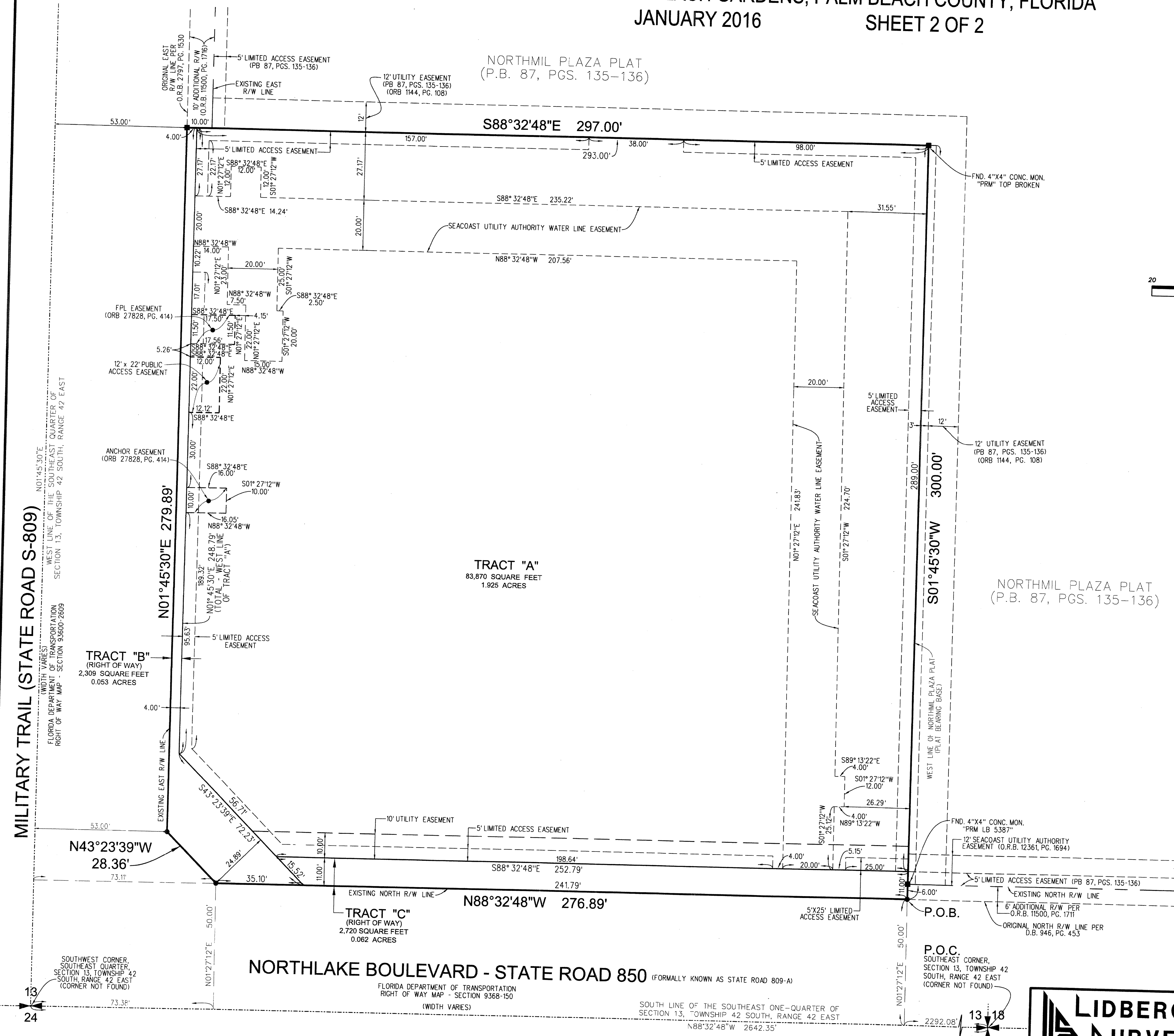


CVS NORTHLAKE

BEING A PORTION OF SECTION 13, TOWNSHIP 42 SOUTH, RANGE 42 EAST,
CITY OF PALM BEACH GARDENS, PALM BEACH COUNTY, FLORIDA
JANUARY 2016 SHEET 2 OF 2



ABBREVIATIONS:

- R = RADIUS
- A = ARC LENGTH
- D = DELTA
- CL = CENTER LINE
- CB = CHORD BEARING
- CD = CHORD DISTANCE
- CONC = CONCRETE
- DB = DEED BOOK
- DE = DRAINAGE EASEMENT
- FDOT = FLORIDA DEPARTMENT OF TRANSPORTATION
- FPL = FLORIDA POWER & LIGHT
- LAE = LIMITED ACCESS EASEMENT
- LB = LICENSE BUSINESS
- LLC = LIMITED LIABILITY COMPANY
- MON = MONUMENT
- NR = NON RADIAL
- ORB = OFFICIAL RECORD BOOK
- OS = OPEN SPACE
- PB = PLAT BOOK
- PC = POINT OF CURVE
- PG = PAGE(S)
- POB = POINT OF BEGINNING
- POC = POINT OF COMMENCEMENT
- PRC = POINT OF REVERSE CURVE
- PT = POINT OF TANGENT
- PRM = PERMANENT REFERENCE MONUMENT
- ROW = RIGHT-OF-WAY
- SR = STATE ROAD
- SUA = SEACOAST UTILITY AUTHORITY
- UE = UTILITY EASEMENT
- WLE = WATER LINE EASEMENT

LEGEND:

- DENOTES A SET MAG NAIL AND DISK STAMPED "PRM LB 4431" PERMANENT REFERENCE MONUMENT (P.R.M.), UNLESS OTHERWISE NOTED.
- DENOTES A SET 4"x4" CONCRETE MONUMENT STAMPED "PRM LB 4431" PERMANENT REFERENCE MONUMENT (P.R.M.), UNLESS OTHERWISE NOTED.

TABULAR DATA

AREAS		
TRACT	SQUARE FEET	ACREAGE
A	83,870	1.925
B	2,309	0.053
C	2,720	0.062
TOTAL	88,899	2.040

LIDBERG LAND SURVEYING, INC.

675 West Indiantown Road, Suite 200,
Jupiter, Florida 33458 TEL. 561-746-8454

CAD.	K:\JUST \ 134242 \ 12-135-306 \ 12-135-306.DGN		
REF.			
FLD.	K.F.	FB. 634 PG. 31-33	JOB 12-135-306
OFF.	D.P.K., E.C.	636 24-28	DATE JANUARY 2016
CKD.	D.C.L.	645 32	DWC. D12-135P
SHEET 2 OF 2		DWC. D12-135P	